

GREETINGS LANDCARERS

In this month's bumper issue we have more events to get you all together, including 4 film events, a community planting and a bus trip around locality sites where you can pick up tips and tricks from each other, finishing with a simple BBQ in Heritage Park.

We hope you enjoy the collection of articles we've put together this month.

From the BVL team



There was lots of discussion about tree roots at recent Plan C workshops on Climate Resilient Plants in different ecological communities. Pictured is the 'riverine' group admiring a Giant Water Gum.

BVL NEWS

Community Planting - Thursday 21 September from 7.45am

Brunswick Valley Landcare and Positive Change for Marine Life invite you to our community planting day. We will enhance resilience by planting 700 native riparian species on private land bordering the Brunswick River.

Positive Change for Marine Life are leading this community driven, ecosystem approach to the recovery and resilience of the Brunswick River. The project will develop community-led restoration programs to protect and support carbon sinks, strengthen catchment resilience, and engage a diverse group of community stakeholders.

\$5 ticket price goes towards refreshments provided for all planters. Register here <https://www.eventbrite.com.au/e/community-planting-morning-with-positive-change-4-marine-life-tickets-109593950456>



BVL Locality Group Bus Trip - Sunday 22nd October

We invite Brunswick Valley Landcare members to join us on a bus field trip to see what our volunteer groups have been up to. Pick up tips from other landcarers on different ways of managing weeds, tree planting tips, tools of the trade and be part of the comraderie of other landcare groups.

We'll visit three sites and finish with a BBQ lunch hosted by BVL. Start and finish at Heritage Park in Mullumbimby.

Please bring a picnic blanket or chairs, a drink of your choice and your friendly face to meet other Landcarers. This event will sell out fast so don't delay. Please advise any dietary requirements (eg gluten free, vegetarian, etc) when you book.

Ticket price includes the bus, driver, and simple BBQ lunch. Please bring a thermos and snack for morning tea and wear long pants and sleeves, hat, sunscreen and bring water.

Register here <https://www.eventbrite.com.au/e/bus-field-trip-locality-group-sites-tickets>

BVL NEWS

Films, films, films!

Brunswick Valley Landcare are pleased to be hosting **The Giants Film at the Byron Theatre** tonight - Friday the 15th of September from 7pm. This will be a fundraising event for BVL and proceeds from the tickets will go towards more plantings, habitat restoration and bush regeneration projects across the Byron Shire.

Here is the link to the tickets:

<https://byron.sales.ticketsearch.com/sales/salesevent/112928>



BRUNSWICK VALLEY LANDCARE PRESENTS

FUNDRAISING FILM FEST

PLANET FUNGI

4.00PM SUNDAY 15 OCTOBER 2023

Including Q&A with filmmakers

Planet Fungi is a pioneering fungi adventure in the remote Eastern Himalayas. Internationally acclaimed fungi photographer Stephen Axford and local tribal guides take us on a journey of discovery into a world of extraordinary, beautiful and bizarre mushrooms..... a world beyond imagination.

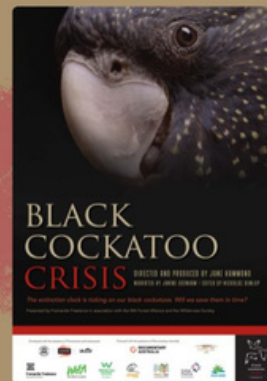


BLACK COCKATOO CRISIS

6.30PM WED 25 OCTOBER 2023

Including a short talk - Glossy Squad

Black Cockatoo Crisis looks at the plight of our special cockatoos and what we can do to stop these threatened species disappearing for ever. While set in Western Australia this is a universal story of biodiversity loss and what can be done to reverse the situation.



THE MESSAGE OF THE LYREBIRD

6.30PM WED 15 NOVEMBER 2023

Including a short talk - local Lyrebirds

No other bird on the planet can do what the lyrebird can do. A journey through Australia's native forests to understand the sophistication and complex artistry of the lyrebird, leading us to a deeper understanding of our natural world.



Tickets: www.brunswickpicturehouse.com
Each film: \$25 Adult/ \$20 concession/ house mates

Each ticket sold helps Brunswick Valley Landcare do more plantings, habitat restoration and bush regeneration projects across the Byron Shire.

CLIMATE RESILIENT LANDSCAPE WORKSHOPS A SUCCESS!

Jo Green, Greg Shanahan and Bela Allen delivered four workshops to Plan C workshops participants during August, each with a different focus.

The workshops were:

- Coastal & Heathland - Friday, August 4th (Marvel Hall, Byron Bay)
- Rainforest - Friday, August 11th (Pearces Creek Hall, between Lismore and Bangalow)
- Riverine & Creek - Sunday, August 20th (Shearwater Steiner School, Mullumbimby)
- Hinterland - Friday, August 25th (Uki Hall, Uki)

Thank you to Plan C for this great opportunity to work together. We hope its the start of a productive partnership.



- 1: Rainforest - Learning about the values of tree roots for standing up to floods. Giant *Syzygium francisci* at Booyong Reserve.
2: Going for a Coastal & heathland walk; 3: Going for a riverine and creek walk

NEST BOX AND ARTIFICIAL HOLLOW WORKSHOP

BVL staff attended a Nest Box and Artificial Hollows Workshop in Port Macquarie recently which was a community of practice around all things habitat hollows.

The following presentations were provided:

- the results of the North Coast Regional Next Box Project conducted over 2021-22 along with release of new Nest Boxes and Artificial Hollows Guidelines - a copy has been added to our website <https://brunswickvalleylandcare.org.au/wildlife/>
- Several artificial hollow specialists showed us their wares - Hollow Hog, Wildbnb, Habitat Innovation and Management (Habitec)
- We also heard from Biodiveristy Conservation Trust and Dr Brian Hawkins, a threatened species officer with the Department of Planning and Environment.



Above: Wildbnb presentation
Left: Regional Landcare network members
Below: Listening intently



BYRON SHIRE COUNCIL NEWS

Help protect our shorebirds and chicks - keep dogs in designated areas

Byron Shire Council is calling on all dog owners to keep their dogs strictly within the designated dog off-lead areas on Byron Shire beaches at all times of the day and night or face hefty fines. "We have generous off-lead areas on a number of Byron Shire beaches and very good reasons for asking dog owners to keep their dogs within the signed areas," Byron Shire Council's Manager Public and Environmental Services, Sarah Nagel said.

"At the end of winter each year and into Spring, the Shire's endangered shorebirds are busy breeding and creating nests for their new chicks and this happens in the areas where they have space and freedom to move without being disturbed by dogs.

"Even the smallest, gentlest dog who takes a run beyond the dog off-lead areas can disturb ground nesting birds, and this can unfortunately result in these birds losing their chicks – a tragedy we need to do everything we can to avoid," Ms Nagel said.

Council's Biodiversity Team Leader, Liz Caddick said that Byron Shire's rich biodiversity is what attracts the endangered shorebird visits during breeding and nesting season. Some of the birds you might be lucky enough to see here include the Pied Oystercatcher, Sooty Oystercatcher, Red-capped plover, Bush Stone-curlew and Beach Stone-curlew.

"If a mother bird has to stay off the nest for a long time, defending it from dogs or other animals she thinks are a threat, the chick will either starve or die from overheating in the sun," Ms Caddick said.

<https://www.byron.nsw.gov.au/Council/Media-centre/Media-releases/Help-protect-our-shorebirds-and-their-chicks>



Mulch sale at Byron Resource Recovery Centre

Winter is officially over and to mark the start of Spring, Council is offering big discounts on the mulch it makes at the Byron Resource Recovery Centre (BRRRC). For the month of September, or until sold out, Council is offering the mulch for \$10 per cubic metre (trailer load) - a massive saving on its normal price of \$38 a cubic metre.

The mulch is made from green waste that has been brought into the BRRRC where it is put through a heating and aeration process that allows it to break down quickly and kills any seeds and weeds.

There is a limit of 12m³ per customer. People wanting to make bulk orders are asked to get in touch with the team at the BRRRC on 1800 652 625.

The best way to pick up the mulch is with a trailer. Council has two that are available for free to Byron Shire residents. More information on how to [hire one of the free trailers](#) is on Council's website.

BYRON SHIRE COUNCIL NEWS

Which mammal is Byron Shire's super-pollinator

Flying-foxes are nature's 'super-pollinators' and Byron Shire Council's Biodiversity team is turning its attention from schools to plant nurseries in the next stage of its No Bat No Me project. In the last six months staff have spoken to 300 children from local schools, presenting information about flying-foxes, their essential role in the environment and the importance of the protection of native habitat.

"The school presentations have been very well received and students have been very interested in the relationship between flying-foxes and our local koala population", Claudia Caliarì, Biodiversity Projects Officer, said. "One of our key messages is that local forests, including healthy koala habitat, depends on our super-pollinators – flying-foxes," Ms Caliarì said.

"Flying-foxes, sometimes, do not have the best reputation as neighbours but they are vital pollinators and major contributors to a healthy natural environment, which in turn supports other native animals such as koalas," she said.

The presentations to school students have been supported by a broader advertising campaign that provides key information about flying-foxes, as well an educational video that is on Council's website. "We now shift our focus to developing a list of flying-fox and koala-friendly plants for property owners who are interested in providing food and shelter for native wildlife," Ms Caliarì said.

"Two local nurseries are working with us to promote this list of plants to people who want to encourage koalas and flying-foxes in our Shire to thrive," she said.

Information about [flying-foxes](#) in the Byron Shire is on Council's website.

Get involved in the platy-project for some platypus spotting this Sept

This September everyone is invited to help one of Australia's most iconic species, the platypus, by participating in the [platy-project](#).



The platy-project is an annual event hosted by the Australian Conservation Foundation (ACF) that brings together people from across Australia, to help count and monitor the platypus population in our waterways. Data collected from the project is used to better understand the platypus population and make informed decisions about their protection.

"Last year over 1,000 people across Australia participated in the platy-project, with several people spotting the mammal in the Byron Shire, including at the Bangalow Weir Parklands," Council's Biodiversity Team Leader, Liz Caddick said.

"September is the best time of year to spot a platypus, but if you see one at another time, you can still jump on the ACF website and record your sighting on the [platy-project map](#)," she said.

'LOVE LETTERS TO THE LAND' WITH COSTA

This year, Junior Landcare is celebrating 25 years of opening children's hearts and hands to landcare.

To help us celebrate, we've teamed up with Junior Landcare ambassador, Costa Georgiadis, for a special letter writing campaign that's calling on kids to share what they love most about the environment – and the steps they're taking to protect it.

"The more you engage with nature, the more you appreciate it; and the more you appreciate it, the more likely you are to want to protect it," shares Costa.

Whether you write your letters as a class, school or youth group; individual, early learning centre or family – we want to hear from YOU! We also want to help you share your ideas and the actions you're taking to care for the natural environment because we know children and young people have the power to positively influence those around them.

To help get your creative juices flowing, Landcare Australia have created a curriculum-linked learning activity available in the Junior Landcare Learning Centre, as well as special letter templates you are free to download. <https://juniorlandcare.org.au/love-letters-to-the-land>



TWEED BYRON HINTERLAND TRAILS UPDATE

National Parks and Wildlife are pleased to announce that the Gidjoom Gulganyi Walk Master Plan (formerly the Tweed Byron Hinterland Walk draft master plan) has been finalised. The master plan provides a framework for the delivery of the 39-kilometre multi-day walk from the new Unicorn Falls carpark in Mount Jerusalem National Park to Minyon Falls in Nightcap National Park, showcasing spectacular rainforest and breathtaking views.

The walk's new name, 'Gidjoom Gulganyi', means 'Old People's Track' and was jointly chosen by the Widjabul Wia-bal Native Title Holders and the Wollumbin Consultative Group.

You can view the [Gidjoom Gulganyi Walk Master Plan](https://www.environment.nsw.gov.au/topics/parks-reserves-and-protected-areas/park-management/community-engagement/walking-tracks-and-trails-in-national-parks/tweed-byron-hinterland-trails/tweed-byron-hinterland-walk-master-plan) online at:

www.environment.nsw.gov.au/topics/parks-reserves-and-protected-areas/park-management/community-engagement/walking-tracks-and-trails-in-national-parks/tweed-byron-hinterland-trails/tweed-byron-hinterland-walk-master-plan.

Flood Recovery Water Quality Monitoring Project

The Flood Recovery Water Quality Monitoring Project has been developed in response to the natural disaster flood events of 2022. The project aims to assess the extent and duration of flood impacts on water quality, and to help communities by informing and supporting decision making around waterway use and management following floods. The project, which runs until June 2024, is prioritising work in the Northern Rivers, and the Hawkesbury-Nepean River, and will also assess flood impacts and recovery in coastal waterways across the Mid and North coast of NSW.

Brunswick Valley Landcare are part of the stakeholder group on this project. For more information about the program visit <https://www.epa.nsw.gov.au/reporting-and-incidents/flood-recovery-programs/water-quality-monitoring-program>

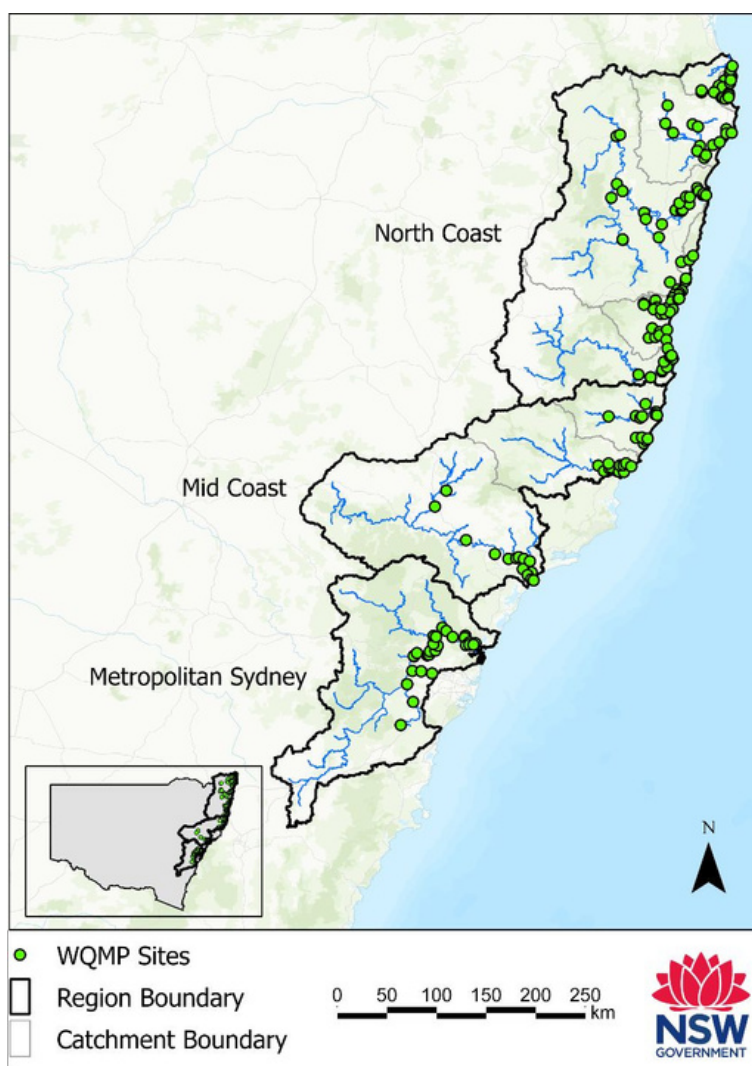
Citizen Science Spotlight

The project is collaborating with environmental organisations to involve local communities in monitoring water quality and ecological health indicators. This contribution will enable us to explore whether areas that experienced water quality impacts as a results of the 2022 floods are showing evidence of ecological impacts or recovery.

One of these projects is managed by Positive Change for Marine Life, which delivers community-based projects in Australia and internationally to improve the health of waterways and coastal ecosystems. In 2019, they initiated a comprehensive ecological monitoring program to assess the health of the Brunswick River, monitoring water quality, debris, riverbank erosion, and vegetation cover.

In partnership with our project, the program is expanding to include freshwater macroinvertebrate sampling at five key sites, and a wetland monitoring program to assess the condition of mangrove habitat in the estuary. The results of this work will contribute to an ArcGIS StoryMap for the Brunswick River and will help us to interpret our results regarding water quality recovery following floods.

Visit the Brunswick River Storymap
<https://storymaps.arcgis.com/stories/>



IMPORTANT WOODY VEGETATION IN RICHMOND RIVER RIPARIAN ZONES MISSING (Courtesy Richmond River Keeper)

Southern Cross University students have been making some powerful maps.

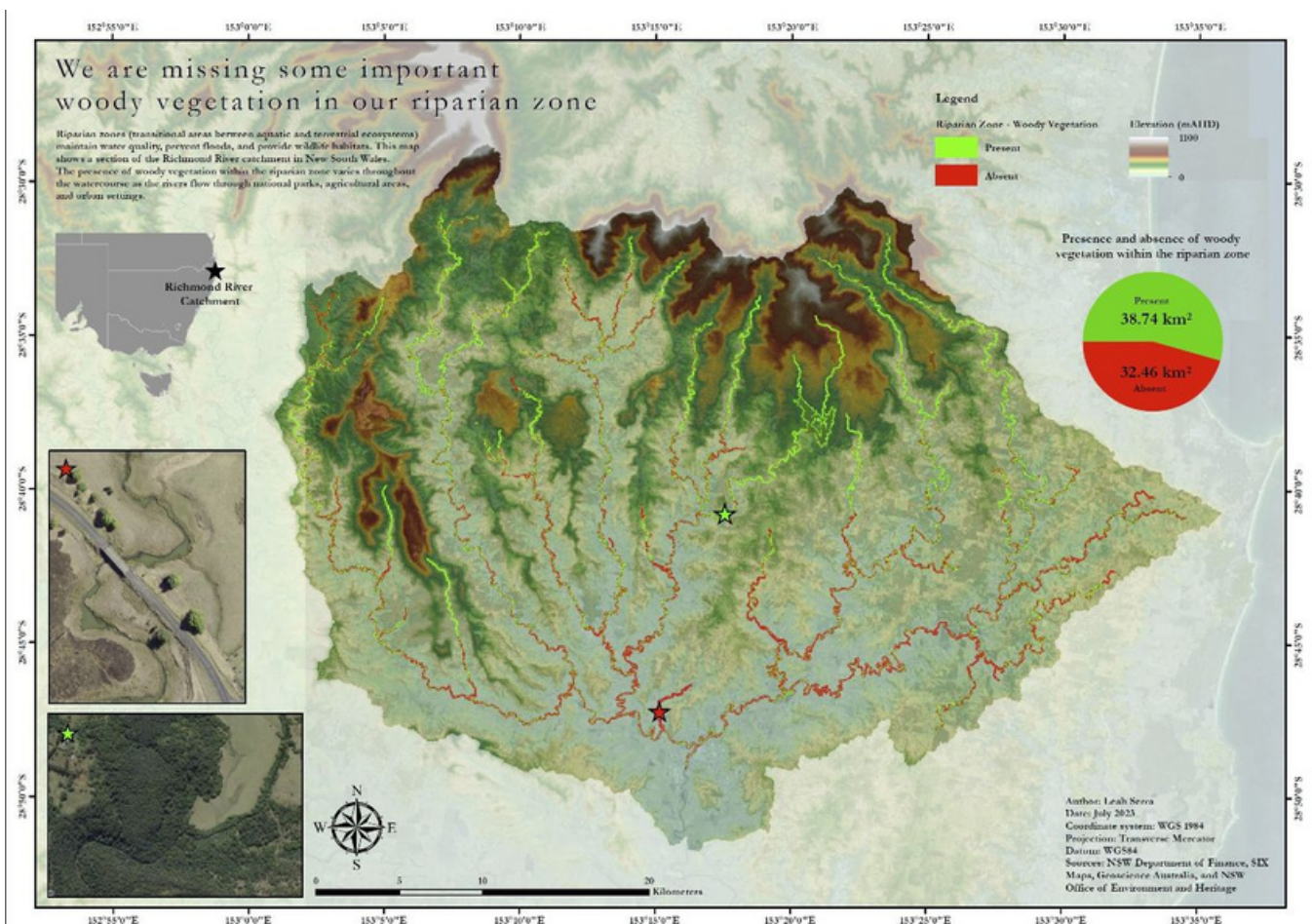
This map is titled WE ARE MISSING SOME IMPORTANT WOODY VEGETATION IN OUR RIPARIAN ZONES was produced by student Leah Serra who writes:

"Riparian zones (transitional areas between aquatic and terrestrial ecosystems) maintain water quality, prevent floods, and provide wildlife habitats. This map shows a section of the Richmond River catchment in New South Wales. The presence of woody vegetation within the riparian zone varies throughout the watercourse as the rivers flow through national parks, agricultural areas, and urban settings."

The loss of vegetation in the riparian areas of our creeks and rivers is a legacy of times when the rivers were the roads and the creeks were used to transport timber to the towns. River flats were also intensively cropped for agriculture, much more so in the past.

Using publicly available data for the Wilsons River catchment, Leah's map clearly shows where we have some work to do to restore our riparian vegetation if we want to improve water quality and catchment health, this is especially so for the upper catchment.

The riverbanks need more landcare and bush regen, as well as fencing and off stream watering for livestock but this can be cost prohibitive for farmers. There are several projects and much interest in more support for landholders to assist them restore riparian vegetation and address the legacy of past practices.



Critically Endangered fledgling takes long haul flight to North Coast

National Parks and Wildlife Service (NPWS) Shorebird Ranger Kaitlyn O'Brien said she was over the moon when the call came in from the Australian Bird and Bat Banding Scheme (ABBBS) reporting that 'Hoodie T7' had been spotted near Evans Head.

"Until now the maximum distance a banded hooded plover has been recorded moving is 376 km, and that was after 5 years, so this little one has certainly started at a cracking pace," Ms O'Brien said. "We are not sure why Hoodie T7 is so adventurous as these beach-nesting birds are typically only seen on the south coast, so we are very keen to hear where it stops next. Our dedicated group of south coast shorebird volunteers monitored Hoodie T7 as a chick, watched it grow, shadow its parents and eventually fledge in January.

"Thank you to the ABBBS volunteer who spotted T7 and reported it. It's incredible to learn that Hoodie T7 has ventured so far and we are really pleased to see it looking happy and healthy. "It's extremely rewarding to know that our work protecting these birds during the nesting season pays off, and that we are contributing to the survival of this species," Ms O'Brien said.

Hooded plovers are listed as Critically Endangered in New South Wales. A recent census estimate puts the current NSW population at only 65 birds. Despite their distinct black, white and red colouring, hoodies are difficult to spot during nesting season and are very vulnerable to disturbance.

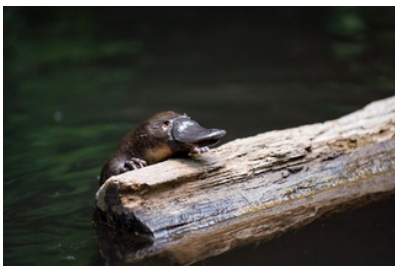
The best way for people to help Hoodies and other beach-nesting birds is to share the shoreline. Be aware that shorebirds nest on NSW beaches from August to March. Give them space, leash dogs and walk on wet sand, avoiding the dunes.

Read more <https://www.environment.nsw.gov.au/news/critically-endangered-fledgling-takes-long-haul-flight-to-north-coast>

.....



The Platy Project - Australian Conservation Foundation



The Platy Project is a citizen science project run by the Australian Conservation Foundation (ACF) during the month of September to encourage Australians to look for platypus across the country, document their findings, and help researchers understand more about these endangered animals and how we can better protect them.

By taking part you'll help researchers understand more about the elusive platypus and how we can better protect them.

This toolkit contains all the information you need to go out looking for a platypus, and what to do if you do (or don't) spot one. It also covers how to host a survey event with friends, family or people in your local community, to increase your chances of spotting a platypus and raise much-needed awareness of this incredible creature.

To sign up or view the project, see <https://www.acf.org.au/platy-project>

The Northern Rivers Feral Deer Prevention Program goes to Canberra... and becomes a National Containment Zone! (Courtesy Tweed Landcare)

The National Feral Deer Workshop was held in Canberra on August 14-15 with the purpose of sharing knowledge on recent feral deer research and management across Australia, and to discuss future opportunities and directions.

Feral deer are rapidly becoming Australia’s worst emerging pest animal problem. They destroy the environment, foul waterholes, cause car accidents, compete with livestock for food, destroy fences and spread diseases such as cattle tick fever and foot and mouth disease.

Tweed Landcare Project Officer Kim Stephan and Tweed Shire Council representatives Pam Gray, Rachel Hughes and the new Council Feral Deer Project Officer Rob Smith went to the conference to learn what other states around the country are doing to manage the threat of feral deer.

There were short presentations on recent management programs, trials and research with better ways to control feral deer including a deer specific baiting stations, feral deer traps and advances in thermal imagery detection. The various States are approaching the problem in very different ways. South Australia and Western Australia are ambitiously attempting to eradicate deer from the entire state whereas other states are attempting population suppression and asset-based management.

The Tweed Feral Deer Team gave a talk on the Northern Rivers Feral Deer Prevention Project and how we are ready to collaborate with partners to upscale efforts to keep feral deer out of the region. We are especially pleased to confirm that the Northern Rivers region is now in a National Feral Deer Containment Zone, which we hope will mean our beautiful region with significant agricultural and environmental assets could be a successful case study for preventing feral deer from establishing.

.....

Invasive species such as feral cats the number-one driver of biodiversity loss in Australia, UN report shows

Invasive species are a major driver of biodiversity loss around the world, but in Australia they are the leading cause, according to a new global report.

While the world has known just how damaging invasive alien species can be, the report provides the most comprehensive assessment on biological invasions to date.

While things are bad globally, they are even worse in Australia. "Australia has close to 3,000 invasive alien species estimated to cost Australia approximately \$25 billion every year in losses to agriculture and management costs," CSIRO chief research scientist for biosecurity Andy Sheppard said.

"Globally, they are in the top five drivers of biodiversity loss, alongside land and sea use change, direct exploitation of organisms, climate change, and pollution. "However, in Australia, they are number one – they are the leading cause of biodiversity loss and species extinction."

Read more <https://www.abc.net.au/news/2023-09-05/un-invasive-species-report-biodiversity-loss-australia/>

Northern Rivers Koala Count

24th-30th September 2023



REPORT YOUR KOALA SIGHTING

friendsofthekoala.org



Spotted a sick or injured koala? **24HR RESCUE: 6622 1233**



A Northern Rivers
region collaboration



THE JOURNEY OF THE BUGAM

(COURTESY REVIVE NORTHERN RIVERS)

A fascinating article by Elizabeth Pennisi, with contributions from multiple Bundjalung knowledge holders, was recently published at [Science.org](https://www.science.org) and investigates how First Nations people across the continent helped to shape the distribution of our plants.

In this particular case, and something we often see in the 21st century, modern science was able to confirm the accuracy and reliability of traditional oral knowledge passed down over countless generations through story.

One of the species that was examined in the study was the Bugam (Black Bean) which is a common species found here in the Northern Rivers. We used to race these beautiful seed pods, which resemble mini-canoes, down the river when we were kids!

Stories related to songlines that travel throughout the region told us that Bugam was distributed across the landscape by people. After speaking to local Bundjalung man Oliver Costello and a number of other local Bundjalung knowledge holders, DNA sequencing has now supported this idea. This reinforces yet again the intricacy and remarkable clarity that local Indigenous stories provide to help us better understand our landscape, provide "practical insights into how to make conservation efforts more effective" and how to look after our ecosystems in a changing climate.

The article also delves into amazing phenomenon of the Bunya tree and the periodic festivals that used to take place in the Bunya mountains where people would travel hundreds of kilometres to attend.

Read the article in full <https://www.science.org/content/article/indigenous-people-shaped-australias-curious-geography-plants>

GROWING CITY FORESTS FOR MENTAL HEALTH AND CLIMATE RESILIENCE

In this 41 minute podcast, Cecil Konijnendijk speaks about the power of the 3:30:300-rule, some of the latest evidence on the benefits of urban nature, and success stories of urban greening. Also discussed was the importance of microdosing nature in our daily lives.

Cecil Konijnendijk is widely considered as one of the world's leading experts on urban forestry. He co-leads the Nature Based Solutions Institute, a think tank for the evidence-based greening of cities. He's also an honorary professor at the University of British Columbia with over 25 years of experience studying, teaching, and advising on aspects of urban forestry and nature-based solutions. In 2021, he launched the 3-30-300 rule for greener and healthier cities, which is being implemented in communities around the world.

In this wisdom-packed conversation, Cecil shares the basis for the 3-30-300 rule he created, how it benefits mental health, cools cities, and improves social cohesion.

Listen here <https://www.naturejunkielife.com/naturejunkieradio/cecilkonijnendijk>



As Landcarers we already know this right? Amidst urban sprawl, trees wield more than visual charm. A recent Melbourne study explored urban forests' intricate social-ecological dynamics by capitalizing on a scheduled tree removal program. Through Before-after-control-impact (BACI) setups at an urban park and a street, researchers uncovered a web of effects.

In the park, losing trees led to a 62% drop in nectarivorous birds and possums, but an 82.1% surge in invertebrate predation. Human perceptions shifted too. Park significance waned, yet positive attitudes towards tree planting surged. In the street, where fewer trees vanished, such shifts were absent, hinting at context's role. Urban trees, beyond adornment, foster wildlife and shape human urban experiences.

Read the article https://besjournals.onlinelibrary.wiley.com/doi/10.1002/pan3.10509?trk=feed-detail_main-feed-card_feed-article-content

Industrial hemp vying to take over Victoria's timber industry

(ABC Rural)

Hemp advocates hail the "stigmatised" crop as the billion-dollar saviour of Victoria's ailing timber industry, but politicians are concerned the industry could pave the way to legalising cannabis.

The cannabis variety can be processed into a range of building materials, many of which are heat or fire resistant.

Just six farmers are growing fewer than 200 hectares of hemp in Victoria, while Tasmania's \$4.5 million industry grows around six times that amount. That's a drop in the ocean when compared with the global industry, which is expected to grow from about \$7 billion a year to more than \$27 billion by 2027.

Victoria and Canada both passed legislation to allow industrial hemp cultivation and processing in 1998. While Canada has become a world leader in production, Australia remains far behind.

The Victorian government made the shock announcement on May 23 that native logging would end by January 1, almost seven years ahead of schedule.

Processors in Gippsland could replace timber with hemp, says Darren Christie, president of the non-profit industry organisation iHemp Victoria. This would maintain employment and financial stability for logging communities while offering a solution to building supply shortages, he says.

Read more <https://www.abc.net.au/news/2023-06-01/industrial-hemp-vying-for-victoria-government-boost/>

AUSTRALIA'S WORLD HERITAGE SITES ARE FACING UNPRECEDENTED CHALLENGES FROM CLIMATE CHANGE

World Heritage Sites across the world are facing unprecedented challenges from climate change.

Australia has 20 sites on the UNESCO World Heritage List, from convict sites like the Port Arthur Historic site in Tasmania to natural and cultural heritage sites like Kakadu National Park.

In a CSIRO-led paper published in Nature Sustainability, [Holistic climate change adaption for World Heritage](#), our researchers looked at the impacts of climate change on these sites and how we can rethink their management.

Changes such as increasing temperatures, precipitation change, more frequent extreme events and rises in sea level can directly threaten the attributes of World Heritage Sites for their 'Outstanding Universal Value'.

Read more <https://www.csiro.au/en/news/All/Articles/2023/July/climate-change-world-heritage>

How could future climate affect our farms?

We all know farmers rely on rain and sunshine to produce the food we eat and the threads we wear.

[My Climate View](#) provides tailored insights on how these risks are likely to change in the future, which can inform better planning and decision-making. We've engaged more than 2000 people who work in agriculture around Australia to ensure the insights are relevant and useful. We developed My Climate View with the Bureau of Meteorology and with funding from the Australian Government's Future Drought Fund.

And the best thing is it's free to use – helping farmers plan for future climate change and drought. Using My Climate View, farmers across Australia can explore how the climate variables that matter to their businesses could change in the future. And respond to this by building their climate resilience for decades to come.

POWER to the PADDOCK Mullumbimby

(Courtesy Mullum SEED)

Community Owned Renewable Energy Mullumbimby (COREM) is collaborating with the Paddock Project - helping to get them set up with solar power to better support all the wonderful services they provide for our community. Head to this [link](#) to find out how you can support the Paddock in making this happen!

ReForest Now Nursery

ReForest Now are now selling rainforest trees and shrubs from their nursery on site at the Mullum SEED Eco Hub (Mullumbimby Community Gardens). You can visit their nursery now from 10am-4pm Monday - Friday to stock up on all your rainforest needs! Their nursery is located at the back of the Eco Hub, drive past the Mullumbimby Community Gardens and you'll see their big sign on the left!

Rapid bushfire detection was promised after the Black Summer fires. But is the technology up to it?

Following the 2019/20 bushfires, experts told the bushfire royal commission that Australia needs to invest in fire-detecting satellite technology. A month later, Andrew Forrest's Minderoo Foundation announced a plan for rapid fire detection using satellites, to be ready by 2025. Under the plan, satellite technology would be able to detect fires in a fraction of the time of the RMIT-developed algorithm.

Experts say fires need to be detected more quickly, so they can be extinguished before they grow too large. In Australia, most fires are still reported through triple-zero calls, and can burn for hours before authorities are alerted. In that time, a lightning strike can become an inferno.

So is the technology up to the task? Read about it <https://www.abc.net.au/news/science/2023-08-30/bushfires-can-be-detected-from-space-within-minutes-of-ignition/>

.....

Researchers trial native pollinators as varroa mite threatens European honey bee

Scientists are backing native stingless bees as an effective alternative to European honey bees for pollination of some crops amid varroa mite outbreaks.

The European honey bee has been in Australia for about 200 years and, as the main pollinator of crops, is responsible for about a third of the volume of food we eat in Australia. Since varroa mite was discovered at the Port of Newcastle in June last year, more than 25,000 hives have been euthanised in New South Wales, affecting beekeepers and also the fruit and vegetable growers who rely on bees for pollination.

With the incursion putting an increased focus on the need for alternative insect pollinators in Australia, researchers from Western Sydney University and Griffith University have been looking into stingless bees. Like their introduced counterpart, these native bees also produce honey, live in large colonies and can pollinate crops.

Read more <https://www.abc.net.au/news/rural/2023-08-11/sciencists-trial-native-pollinators-honey-bee-varroa-mite/>

.....

Ticks are thriving after three wet summers and that could lead to more meat allergy cases

Mammalian Meat Allergy (MMA) was discovered in 2007 by Australian allergy specialist Sheryl van Nunen. Professor van Nunen said like most allergies, there was a broad range of how people with MMA could react.

"A milder systemic reaction would be generalised welts ranging through to closure of your throat and breathing difficulty and impending loss of consciousness and passing out needing resuscitation," she said. People who contract MMA need to radically rearrange their diets to cut out products which will make them sick, but often products like jelly lollies, which contain gelatine made from animal skin or bones, can catch people out.

Read more <https://www.abc.net.au/news/2023-08-25/ticks-boom-after-la-ni%C3%B1a-and-bites-could-lead-to-meat-allergy/>

REGENERATIVE FARMING

Holistic grazing for the land, plants, animals and people

The SQNNSW Innovation Hub is hosting its next event in October, a Holistic Planned Grazing workshop with Brian Wehlburg.

This three-day workshop will help graziers maintain animal performance and ensure they have enough pasture, while also improving their farm's profitability and biodiversity.

Brian said he wanted to help farmers simplify the complexity of livestock management. "Holistic Planned Grazing helps ensure that livestock are in the right place, at the right time, and with the right behaviour," he said.

The workshop will be held at The Living Classroom at Bingara from October 3-5. A special early bird price is available until the 4th of September, so [book now](#).

.....

Regen-focused maca farm

Ross Arnett describes his 2,000-tree property, Malua, as an "evolution". One of Brunswick Valley Landcare workshops was held at Ross's farm during 2021/22.

He started implementing regenerative agriculture practices in 2010, but knows there is always something to learn and something to give back. Ross focuses on cover cropping, soil health and diversity to restore natural systems.

Read more about Ross's approach <https://farmingtogether.com.au/cover-cropping-drives-the-whole-system-for-macadamia-farmer/>

Help strengthen soil knowledge and capability

Tell us about soil extension/advisory needs in your area by completing the [National Soil Survey](#).

We all understand that healthy soils are fundamentally linked to strong regional communities through their connections to agriculture and the environment. We have the opportunity to improve soil health, by strengthening soil knowledge and capability. This is one of the main goals of the National Soil Strategy.

If you are a landholder, land manager or service provider, please take the survey to help identify current gaps in soil: knowledge, management, adoption, and extension practices.

It should take around 20 minutes to complete. The anonymous results from the survey will be provided to the Australian Government and will help inform the design and delivery of targeted soil interventions to address priorities under the National Soil Strategy.

For further information, contact the SQNNSW Innovation Hub's Regional Soil Coordinator Cameron Leckie by emailing Cameron.leckie@usq.edu.au or phoning 0413 226 546.

SNIPPETS

Packaging made from food waste could save millions of tonnes of produce from landfill

The browning bananas on your kitchen counter could be transformed into the plastic packaging that contains your next garden salad. Scientists say they have found a way to divert food from landfill and convert it into biodegradable plastic wraps and cellophanes.

Almost 8 million tonnes of food worth about \$40 billion are wasted each year in Australia, through on-farm and supply chain losses, in restaurants and supermarkets. But households discard the most food, throwing away about one-third of all organic refuse.

Cellulose is a fibre found in plants, fruits and vegetables. Nanocellulose is a tiny cellulose fibre that Dr Liu says is strong and flexible, making it ideal for food storage because it can be used to create cling film and other transparent packaging. Scientists say nanocellulose packaging made from food waste could be ready to hit the shelves soon.

Read more <https://www.abc.net.au/news/rural/2023-08-14/food-waste-turned-into-packaging-to-save-produce-from-landfill/>

New Organic Industry Discussion Group to lobby for use of 'organic' word in Australia

Australia is the only developed country not to have a standard regulation around the word "organic".

"For me, it's actually just a bit embarrassing," said Mr Dan, who farms on the Sunshine Coast. "It means that anybody out there can label themselves organic without having any of that framework or standard to uphold."

From food to cosmetics, products labelled "certified" organic and biodynamic in Australia have to be audited by an accredited industry organisation. But while the Australian Competition and Consumer Commission (ACCC) can police food that is labelled "certified" organic, the same does not apply to the word organic because in Australia it has no mandatory definition.

Read more <https://www.abc.net.au/news/rural/2023-08-14/organic-industry-discussion-group-forms-for-domestic-regulation/>

Australian commercial mushroom farms 'safe', industry says after fatal Leongatha lunch

Australia's mushroom industry says it is "absolutely impossible" that a grower could produce poison fungi. Supermarket suppliers of mainstream mushroom varieties and exotic fungi producers argue they operate to the highest safety standards, and there is no chance toxic mushroom varieties could wind up in stores. The industry is defending its supply chain standards after a woman who prepared a fatal lunch containing suspected toxic mushrooms at Leongatha told police they were purchased, not foraged.

Read more <https://www.abc.net.au/news/rural/2023-08-16/mushrooms-poisoning-leongatha-shopper-fears-after-erin-patterson/>

WEED OF THE MONTH

Ginger lily (*Hedychium gardnerianum*)

Ginger lily is an environmental weed in New South Wales and Queensland. It is ranked among the top 100 of the world's worst invasive species according to the Global Invasive Species Database. It forms large dense stands, with rhizomes that can be 1 m deep. These stands can smother native understorey species, prevent the establishment of shrubs and trees and strongly modify native animal habitat.

It is one of the most shade tolerant weeds in Australia and can dominate the understorey of disturbed and undisturbed rainforests, riparian areas and other moist habitats with fertile soils. It has the potential to be a serious weed of moist, and usually fertile, areas on the coast and tablelands from approximately Melbourne in the south to the far north Queensland highlands.. Ginger lily is also very poisonous to livestock.

How does it spread?

Ginger lily is mostly dispersed by seed, spread mainly by birds, but other animals as well. Once established, plants can expand vegetatively by rhizomes. However, new plants can also develop from small pieces of rhizome, which may be spread by the dumping of garden waste. Seeds are short-lived, with few viable after 1 year. New stems develop in spring and early summer. Flowering chiefly occurs from summer to autumn, but can occur year-round in the right conditions.

Ginger lily prefers moist habitats and fertile soils between sea level and 1700 m in subtropical and warm temperate climates. It also occurs in the highlands of north Queensland where temperatures are cooler. It grows most abundantly in open, light-filled habitats, but can grow into deep shade.

It has been recorded as invading: riparian areas; edges of and within rainforest, montane forest, native forests and planted forests; grasslands, agricultural areas; disturbed areas; urban areas; and wetlands.

Control: Plants can be dug up pulled in small to medium sized infestations, but the entire plant, including pieces of rhizomes need to be removed to avoid regrowth. This can be difficult and costly due to the deep, extensive rhizome system.

More information <https://weeds.dpi.nsw.gov.au/Weeds/GingerLily>



Photos courtesy Department of Primary Industries WeedWise website

EVENTS AND SEMINARS

Webinar - Managing Farm Dams for Biodiversity

In a recent webinar, Bioconservation Trust looked at the importance of bringing biodiversity back to farm dams. Research and extension officer for the Sustainable Farms project at ANU, Dave Smith, and our own Agreements and Technical Services project officer, Sue Pritchard, discussed dam enhancements, including access control, revegetation, and the creation of aquatic habitat to restore and enhance farm dams for native wildlife.

View the webinar here <https://www.bct.nsw.gov.au/news-stories/farm-dams-promote-biodiversity>

.....

Study Conservation Management Online

The NSW Biodiversity Conservation Trust (BCT) conservation land management e-learning modules offer landholders an opportunity to educate and upskill at their own pace, online. The free, self-paced education, delivered through Tocal College, includes content developed to build landholder knowledge of conservation management.

There are 9 modules to work through, with details available here <https://www.bct.nsw.gov.au/elearning>

.....

Boodahbee - Festival of the Koala

'Boodahbee - Festival of the Koala' in Kyogle occurs annually in throughout September. Through a series of events the festival explores and celebrates Koala conservation efforts occurring across the Kyogle LGA.

Boodahbee is the Gulli-bul word for Koala and is a culturally significant animal for this bio region.

Events coming up:

- Tues 19th September Koala Walk : A casual 2 hour walk on property known as Koala habitat. Learn to identify signs of Koalas in the landscape and recognise the characteristics of Koala habitat.
- Mon 25th September Bell Miner Associated Impacts on Koala Habitat : Workshop with speakers at Cawongla
- Fri 29th September Koalas and Cows: Fencing for conservation and stock : Field Day at Green Pigeon
- Sat 30th September Plant & Fungi ID Bonanza : Drop in to all or any of a full day of talks on plant ID - Weeds; Rainforest; Eucalypt; Grasses; Forest Floor; Fungi
- Sat 30th September Crazy Koala Trivia Night: A night of fun and trivia. Test your knowledge of all things Koala

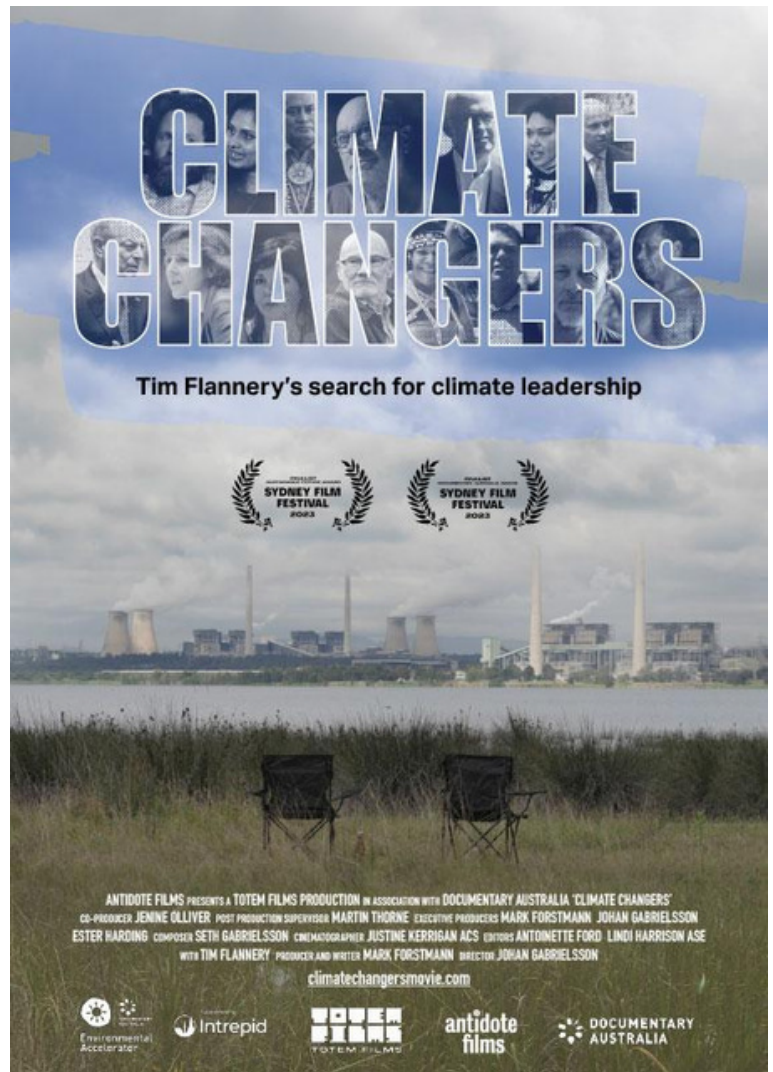
Read more <https://www.brrvln.org.au/boodahbee-festival-of-the-koala>

CLIMATE CHANGERS FILM

CLIMATE CHANGERS is Tim Flannery's search for leadership on climate change. Where are the leaders who will drive change? Are they strong enough to triumph where others have failed?

Tim poses these questions as he meets leaders past and present in the hope of finding answers. Climate change is humanity's greatest challenge as we delve into what frustrates Tim, what motivates him, and where he believes the solutions lie.

This immersive journey takes Tim from his early days as a palaeontologist when he first encountered climate change, to his tireless efforts at the Copenhagen COP in 2009 which failed to deliver, to fending off deeply personal attacks from deniers and right-wing media, to the COP26 in Glasgow 2021, and onto today's ever pressing challenges of geopolitical troubles, and the fossil fuel industry's obstruction to change. Yet there are green shoots of hope.



Screening at The Regent Theatre Murwillumbah
Sunday September 17 5:30pm. LIVE STREAMED Q&A follows the film.

Tickets- https://the-regent.com.au/film/climate-changers/?fbclid=IwAR3flwDT6Pw2dgYeV0NosKuR3K1g_m8A8EnbebU5ITu2gzrnZU-qoOSCCNM

Syntropic Agroecology Workshop (2 days)

With local farming legend Evan Anderson who has a wealth of knowledge to share. Do you want to have a bountiful, vibrant, regenerative and food-filled garden or orchard? This workshop will give you the tools and framework to apply ecological regeneration to your garden, orchard and functional landscape.

WHEN : September 16 and 17

WHERE: Possum Creek

For more info and bookings - [AgroEcology Workshops – Hungry Earth](#)

Weeds as indicators Webinar Recording

A great live webinar held a few months ago with Kim Deans from Reinventing Agriculture. What are the weeds telling us and what are some strategies for better management. Looking at our local context some great info and discussions.

[Weeds as Indicators - Webinar Recording - YouTube](#)

Urban Agriculture Month 2023

Growing Edible Towns and Cities

November 1st to 30th 2023

Sustain: The Australian Food Network's third national Urban Agriculture Month is happening from 1st - 30th November 2023, and everyone is invited! Urban Agriculture Month is a month-long celebration of all things urban agriculture, featuring a range of exciting events happening right across Australia.

From open gardens, workshops, guided tours, communal feasts and other hands-on learning experiences, we bring people together to connect, share and learn.

Our third national Urban Agriculture Month will be happening in November 2023. There will be plenty of ways you can get involved: from attending events to running your own, and sharing our program on socials and in real life with your community. We'll share details about how you can join in a little later in the year. In the meantime, take a look at our map to see what happened last November.

[View Urban Agriculture Month 2022 Events](#)

Regen Farmers Mutual: Landscape Impact Program Information Session

When: 6 - 7.30pm Wednesday 20 September 2023

Where: online

Tickets: <https://events.humanitix.com/regen-farmers-mutual-landscape-impact-program-participant-information-session>

Learn more about the Landscape Impact Program that is run by Regen Farmers Mutual and coming to Northern Rivers, Southern Tablelands, Upper Clarence or Western Murray.

If you are a farmer, farm advisor, conservationist, landcarer or co-operative in one of these areas then this event is for you.

Become a WIRES Wildlife Rescuer and enrol in the WIRES Rescue and Immediate Care Course (RICC)

- Make a real difference in the lives of native animals.
- Learn essential skills in wildlife identification, animal handling, first aid, and rescue scenarios.
- Join a passionate community of like-minded individuals dedicated to wildlife conservation.
- Have the opportunity to assist in the rescue and transportation of injured, sick, and orphaned animals.
- Unlock access to specialist species training courses after completing the RICC.

The WIRES Rescue and Immediate Care Course (RICC) is open to NSW residents aged 18 years or older. To learn more about becoming a WIRES volunteer, including how to get started and enrol in the RICC, please visit our [Wildlife Training Website](#). There is a workshop in Lismore on 10 September.

Farmers dinner and chat

As part of the Santos Organics Grow the Growers project and Organic Awareness Month, we would like to invite you to a gathering for local farmers interested in organic farming and the organic certification process.

Join us for a farm-to-table sunset supper at The Paddock, Mullumbimby (free of charge) to meet like-minded farmers and hear from a range of guest speakers on current projects in the region and what's new in organic certification.

When: Tuesday 26th September 5-7pm

Where: The Paddock Project, Mullumbimby

Full details & RSVP [HERE](#). Places are limited so be quick!

.....

Harvest Accelerator program

[Harvest Accelerator](#) is a 4-month program designed to equip high-potential Agtech and agrifood businesses with the capabilities needed to scale into national and international markets, delivering transformational growth to industry and maximising social and economic contribution through jobs and revenue.

WHEN Applications close 15 October

STARTS 8 December ends Feb 2024

COST Free

Register: [Harvest Accelerator](#) | [Farmers2Founders](#)

.....

Holistic Grazing Workshop

Highly Recommended for anyone with cattle wanting to improve their land and life through better ecological farming decisions. Use your cattle to improve your pasture and your soils building stronger flood and draught resilience and improving the productivity of your land.

When: Nov 14 – 16

Where: The Farm Byron Bay

For more info and bookings: [Holistic Grazing Workshop Tickets, Tue, Nov 14, 2023 at 8:30 AM](#) | [Eventbrite](#)

.....

Southern Cross University's Regenerative Agriculture Mentoring Program (RAMP). SCU is now taking applications for their third program – it's been incredibly popular!

It is heavily subsidised (\$330 for participants) and is a six-month program with weekly commitments. It is education-based with group mentoring, and participants are placed with industry leaders as their mentors, plus they get access to webinars from expert guest speakers, panel discussions, and on-farm visits (where possible). More information about the program here: <https://farmingtogether.com.au/our-work/ramp/>

SCU is aiming to start the next RAMP in early November and finish in June 2024, with a break from mid-December to February. Applications for the RAMP close on 20 October 2023. The form is here: https://bit.ly/ramp_application

FUNDING

Habitat Action Grants are now open

The Habitat Action Grants are funded from the Recreational Fishing Trusts which direct revenue generated by the NSW Recreational Fishing Fee towards onground actions to improve fish habitat and recreational fishing in NSW.

Angling clubs, individuals, community groups, local councils and organisations interested in rehabilitating fish habitats in freshwater and saltwater areas throughout NSW can apply for grants of up to \$40,000.

Habitat rehabilitation projects which may be funded include:

- removal or modification of barriers to fish passage
- rehabilitation of riparian lands (river banks, wetlands, mangrove forests, saltmarsh)
- re-snagging waterways with timber structure
- removal of exotic vegetation from waterways and replace with native species
- bank stabilisation works.

Applications close 29th September 2023

For more information on grant program details and eligibility, head to:
<https://www.dpi.nsw.gov.au/fishing/habitat/rehabilitating/ahr-grants-program>

.....

Water for Wildlife Project

WIRES is calling on landowners in drought and fire affected areas with an interest in the welfare of local wildlife to apply for a Water for Wildlife drinker. Public and private landholders can apply.

WIRES, Reece, Wildsip, WWF Australia, PaddlePop and the University of Sydney have partnered on a national project to provide long-term support to wildlife in by supplementing water via arboreal drinkers.

Applications are open now - [please apply as soon as possible](#)



WORKING BEES

Why not get out and get involved in one of our local groups?

For all Landcare Working Bees please wear protective clothing - long pants, long-sleeved shirt, closed-in shoes, hat, gloves and bring water, sunscreen, and insect repellent. Please always contact the group co-ordinators before attending a working bee as plans do change!

Bangalow Land and Rivercare, Bangalow

WHEN: every Saturday 8:30am

WHERE: find out from

CONTACT: Noelene Plummer bangalowlandcare@gmail.com 0431 20 0638 6687 4470

Frends of Lilli Pilli (Byron Bay)

WHEN: 1st Saturday of the month 3:30pm - 5:00pm

WHERE: At entrance to Lilli Pilli (contact Deb).

CONTACT: Deb Jorgensen deborah.jorgensen60@gmail.com 0434 254 802

Green and Clean Awareness Team, Byron Bay

WHEN: 3rd Sunday of the month 9:00am

WHERE: Meet Main Beach, Byron Bay

CONTACT: Peter Farmakis peter.farmakis@gmail.com 0488 715 565

Heritage Park Landcare, Mullumbimby

WHEN: Saturdays 9:00am – 11:00 am

WHERE: Heritage Park, Mullumbimby

CONTACT: Diana Hughes bromspot@gmail.com

Jinangong Landcare, Ocean Shores

WHEN: 1st Sunday of the month

WHERE: The Tunnel Road, Ocean Shores

CONTACT: Ian Parer ianparer@hotmail.com

Mullum Town Landcare, Mullumbimby

WHEN: Morning of last Sunday of the month

WHERE: find out from John Tann

CONTACT: John Tann johntann99@gmail.com

Ocean Shores Landcare, Ocean Shores

WHEN: each Thursday at 8.30 – 11.00 am (8.00am DST)

WHERE: corner of Yallakool Drive and Warrambool Road, Ocean Shores

CONTACT: David Kemp dnkemp77@gmail.com 0427 650 861

Tallowood Ridge Locality Landcare, Tallowood Ridge Mullumbimby

WHEN: Second Saturday of the month from 3pm (winter), 4pm (summer).

WHERE: Gathering Tree Pocket Park, Cockatoo Cres Tallowood Ridge Estate

CONTACT: Joanne McMurtry jmcmurtry@bigpond.com

Tyagarah Landcare

WHEN: Each Thursday 9:00am – 11:00am

WHERE: 23 Prestons Lane, Tyagarah

CONTACT: Bela Allen bela_allen@yahoo.com 6684 7113

Can't find a group near you? We have many other groups who meet on an ad hoc basis (contact us for more details) or if there isn't an existing group in your neighbourhood or you are interested in looking after a particular area, BVL can help you to form a locality group under the BVL umbrella.

LINKS

- . Arakwal <http://arakwal.com.au/>
- . Australian Association of Bush Regenerators <http://aabr.org.au>
- . Border Rangers Alliance http://www.greateasternranges.org.au/border_ranges/overview/overview
- . Bangalow Koalas <http://www.bangalowkoalas.com.au/>
- . Bangalow River and Landcare <http://www.bangalowlandcare.org.au/>
- . Big Scrub Landcare <https://www.bigscrubrainforest.org.au/>
- . Brunswick Valley Landcare <http://www.brunswickvalleylandcare.org.au/>
- . Byron Bird Buddies <http://www.byronbirdbuddies.com.au/>
- . Byron Community College <http://www.byroncollege.org.au/>
- . Byron Shire Council <http://www.byron.nsw.gov.au/>
- . EnviTE www.envite.org.au
- . Environmental Trust <http://www.environment.nsw.gov.au/grants/envtrust.htm>
- . Friends of the Koala www.friendsofthekoala.org
- . Federal Landcare Inc federalandcare@gmail.com
- . Local Land Services www.northcoast.lls.nsw.gov.au
- . North Coast Local Land Services <http://northcoast.lls.nsw.gov.au/>
- . Border Ranges Richmond Valley Landcare www.brrvln.org.au
- . Mullumbimby Community Gardens <http://mullumcommunitygarden.wordpress.com/>
- . North Coast Nature <http://www.northcoastnature.org.au/>
- . Richmond Landcare Inc. <http://www.richmondlandcare.org/>
- . Rous County Council (formerly Far North Coast Weeds) <http://rous.nsw.gov.au/>
- . Soilcare http://www.soilcare.org_
- . Tweed Landcare Inc. <http://www.tweedlandcare.org.au/>
- . Wilson's Creek Huonbrook Landcare <http://www.wilsonscreeklandcare.mullum.com.au/>

**For information about Landcare or other natural resource issues in Byron shire please contact
Landcare Coordinator, Alison Ratcliffe 6626 7028
(Mon, Tues, Wed)**

info@brunswickvalleylandcare.org.au

Community Liaison Officer, Joanne McMurtry 0409 925 330

jmcmurtry@brunswickvalleylandcare.org.au

www.brunswickvalleylandcare.org.au

