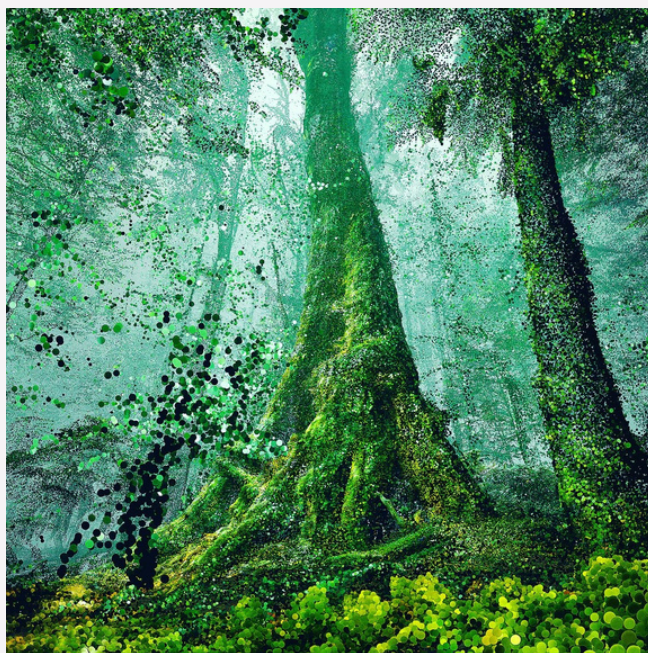


GREETINGS LANDCARERS

In this month's issue you'll find more events to get you all together, including 3 film events at Brunswick Picture House and a bus trip around locality sites where you can pick up tips and tricks from each other, finishing with a simple BBQ in Heritage Park.

For those that are wondering, our screening of The Giants in September raised BVL over \$3,000! What a fun way to raise funds for more plantings, habitat restoration and bush regeneration projects across the Byron Shire. (pictured below and right are scenes from The Giants)

We hope you enjoy the collection of articles we've put together this month.
From the BVL team



Stop Press: TAFE NSW free Statement of Attainment in Bushland Management

TAFE NSW Kingscliff campus is currently offering a free Statement of Attainment in Bushland Management.

The course is being run 1 day per week, begins on the 11th of October and will run for 9 weeks. This course will cover units such as Plant ID, Treat weeds and a Chemical Skills accreditation, it is the perfect introductory course for anyone wanting to learn more about Conservation Ecosystem Management or work in the industry.

Apologies for the late notice but apparently if you miss the first week it will be OK.

If you are interested in enrolling, please click on the below link and follow the instructions.
Statement of Attainment in Bushland management Link

<https://online-enrolments.oneebs.tafensw.edu.au/Enrol/Process/GetStarted/165/11383118>

NOTE: To be eligible for the free course you must be a resident of NSW.

BVL NEWS

BVL Locality Group Bus Trip - Sunday 22nd October

Places are limited so get your tickets now!

There are still a few places left for Brunswick Valley Landcare members to join us on a bus field trip to see what our volunteer groups have been up to. Pick up tips from other landcarers on different ways of managing weeds, tree planting tips, tools of the trade and be part of the comraderie of other landcare groups.

We'll visit three sites and finish with a BBQ lunch hosted by BVL. Start and finish at Heritage Park in Mullumbimby.

Please bring a picnic blanket or chairs, a drink of your choice and your friendly face to meet other Landcarers. This event will sell out fast so don't delay. Please advise any dietary requirements (eg gluten free, vegetarian, etc) when you book.

Ticket price includes the bus, driver, and simple BBQ lunch. Please bring a thermos and snack for morning tea and wear long pants and sleeves, hat, sunscreen and bring water.

Register here <https://www.eventbrite.com.au/e/bus-field-trip-locality-group-sites-tickets>

publinc
communities

Brunswick Valley Landcare fundraiser BBQ at Hotel Brunswick 3 Nov

Brunswick Valley Landcare will be participating in Hotel Brunswick's Publinc 'Feel Good Fridays' on Friday evening 3 November. Come along and have a free sausage between 4 - 6pm and say G'day.

Community Planting with Positive Change 4 Marine Life

We had a great community planting day improving the riparian zone of the Brunswick River where we planted 700 native riparian species on private land. This was a project with Positive Change for Marine Life who are leading a community driven, ecosystem approach to the recovery and resilience of the Brunswick River.



BRUNSWICK VALLEY LANDCARE PRESENTS

FUNDRAISING FILM FEST

PLANET FUNGI

4.00PM SUNDAY 15 OCTOBER 2023

Including Q&A with filmmakers

Planet Fungi is a pioneering fungi adventure in the remote Eastern Himalayas. Internationally acclaimed fungi photographer Stephen Axford and local tribal guides take us on a journey of discovery into a world of extraordinary, beautiful and bizarre mushrooms..... a world beyond imagination.

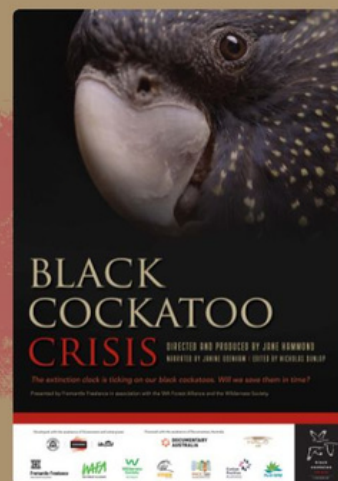


BLACK COCKATOO CRISIS

6.30PM WED 25 OCTOBER 2023

Including a short talk - Glossy Squad

Black Cockatoo Crisis looks at the plight of our special cockatoos and what we can do to stop these threatened species disappearing for ever. While set in Western Australia this is a universal story of biodiversity loss and what can be done to reverse the situation.



THE MESSAGE OF THE LYREBIRD

6.30PM WED 15 NOVEMBER 2023

Including a short talk - local Lyrebirds

No other bird on the planet can do what the lyrebird can do. A journey through Australia's native forests to understand the sophistication and complex artistry of the lyrebird, leading us to a deeper understanding of our natural world.



Tickets: www.brunswickpicturehouse.com
Each film: \$25 Adult/ \$20 concession/ house mates

Each ticket sold helps Brunswick Valley Landcare do more plantings, habitat restoration and bush regeneration projects across the Byron Shire.

NEW GROUPS!!

BVL would like to welcome all our new members and newsletter subscribers over recent weeks.

We're also happy to report a few new locality groups have formed or been reinvigorated recently, including:

- Upper Main Arm - contact Richard Hughes
rhacntg@gmail.com
- Upper Coopers Creek - contact Sandra Kaji-O'Grady
sandra.kajiogrady@gmail.com
- Yelgun - contact Stephanie Smith
stephaniek.smith21@gmail.com
- Suffolk Park Dunecare has recently been reinvigorated (pictured right are Rebekah and Miles)
- contact Rebekah O'Flaherty
rebekahoflaherty@gmail.com
- Brunswick Heads Progress Association are active with various landcare projects around Brunswick Heads



Byron Bay Bird Buddies - October

Shorebird Season is Here

Shorebird season has officially begun. Their arrival is a great reminder to take extra care when visiting beaches this spring and summer. Be sure to stay clear of fenced-off areas, look out for and follow signage, keep dogs on lead at dog-friendly beaches and stick to wet sand to help keep threatened shorebird chicks safe.

Here is Byron Bay Bird Buddies October schedule. To register please email byronbirdbuddy@gmail.com unless otherwise stated.



Monday 16th 08.00 – 12md	Seapeace. – private property - must register contact: byronbirdbuddy@gmail.com or phone - Mobile 0428864378	BBB Full site survey. Must Register for more details
Tuesday 17th 9.30	Cockatoos and Curlews – Meeting Tweed Civic Centre	By invitation
Bird Week – program		
Thursday 19th 08.00	Mullumbimby Heritage Park & River – guided walk – checking out the birds as we go. Meet at the carpark – end of Stewart Street – walk will be to Saltwater Creek & back to Stewart St – via a coffee shop if desired	BBB – Registration advisable but not necessary. Walk is No19 on The Birds of Byron Shire Brochure
Friday 20th 10am	Presentation at Byron Library – Birds of the Shire byron@rtrl.nsw.gov.au or 02 66858540	BBB – Register with Library
Friday 20th 2.30pm	Presentation Mullumbimby Library – Birds of the Shire grace.mckenna@rtrl.nsw.gov.au or 02 66842992	BBB – Register with Library
Sunday 22nd 08.00 – 12.00	Presentation (Bush Birds that Migrate) and Guided Walk at Byron Wetlands-	BBB - Must Register for more details
Oct 27th to - Nov 1st	Bittern Survey Byron Wetlands - exact date and time to be confirmed - register with Vicki davvix1@gmail.com	BBB – Register advisable

BYRON SHIRE COUNCIL NEWS

New project stops 1450 pieces of litter entering waterways in 2 months

Data from a new Byron Shire Council litter prevention project shows that in two months 1,450 pieces of litter have been stopped from flowing into the Cape Byron Marine Park.

Funded by a \$50,000 grant from the NSW Environment Protection Authority, the Source to Sea – Keep Byron Shire Litter-free project has allowed for the installation of 24 litter baskets in drains in Byron Bay.

The first audit revealed 5.1kg of rubbish was collected in the baskets with 60% of items made of plastic including cigarette butts, cutlery, straws and small sushi soy sauce ‘fish’ bottles,” Zoe White, Council’s Waste Education and Compliance Officer said.

The baskets in the drains are designed to trap any litter and organic matter from the street that enters the stormwater drains without impeding the regular flow of water. “Surprisingly we collected almost 91kg of organic matter in the baskets,” Ms White said.

“We are focusing on reducing litter, but the project is about improving the overall health of our waterways in more ways than one and organic debris can also clog drains and have an impact on water quality.

“The devices will be regularly monitored over 12 months and the data we collect will guide future litter prevention and education programs. “What this program shows very clearly is that if someone throws something on the ground it’s almost the same as throwing it straight into our beautiful ocean,” she said.

North East Waste and Positive Change for Marine Life helped Council with the first waste audit. Volunteers who would like to be involved with this project and upcoming audits can email zwhite@byron.nsw.gov.au. Information on the [Source to Sea](#) project is on Council’s website.

.....

Thanks to everyone for making Bring It Back Bruns a huge success

A six-month trial of a new litter reduction campaign at Brunswick Heads has been a huge success with almost 6,000 take-away items, including single-use straws, containers and smoothie cups stopped from going into landfill.

The ‘Bring it Back Bruns’ campaign was the first of its kind in Australia, and was funded through a NSW Environment Protection Authority litter prevention grant. It involved five environmentally conscious businesses serving food and drinks in reusable containers that people returned either to the shop or public collection bins for washing after they were finished.

Sarah Child, Council’s Resource Recovery Strategy and Engagement Officer, said surveys of litter before and during the trial indicate that takeaway litter had reduced by 30%.

Information about [Bring it Back Bruns](#) is on Council’s website.

BYRON SHIRE COUNCIL NEWS

Northern Rivers Feral Deer Survey (5 min)

[The National Deer Action Plan](#) and the Biodiversity team at Byron Shire Council recognises Northern Rivers as relatively Deer free or with low numbers. For this reason, the Northern Rivers LGA Invasive Species Group is trying to reach out landholders and increase awareness of Deer signs in the landscape and its related issues. To understand the local knowledge a bit better, Council have created this survey. To find the survey [use this link](#)



What pest management strategies are you using?

Council is starting a database of local landholders using guardian animals, electric fencing or activities other than trapping and baiting on their property as pest management strategy. This is the initial process for the Byron Shire Pest Animal Management Plan 2018-2023 to review community consultation.

If possible, please get in contact with Claudia Caliari (ccaliari@byron.nsw.gov.au or 02-66287054/ 0448 619 405) for a less than 5 minutes chat to understand a bit of how and what's working or not and the ratio primary producers X lifestyle land managers.

Volunteer with Rainforest Rangers (Rainforest 4 Foundation)

Rainforest Rangers on a mission to restore Australia's rainforests through restoration and regeneration. Guided by the latest scientific data on biodiversity and the effects of climate change, we're carrying out and supporting conservation projects from Far North Queensland to the NSW Northern Rivers and beyond.

Their volunteer program is your chance to take an active, grass-roots role in regenerating our forests to create a greener future. A number of opportunities to get involved in bus regeneration and community plantings are available.

Further information <https://www.rainforestrangers.org/volunteer>

Aussies provide more than 62 million species records for conservation research

Citizen scientists have contributed more than half of all species records to Australia’s national biodiversity database - the Atlas of Living Australia (ALA) - and play a crucial role in supporting conservation and biodiversity research, a new study has found.

This equates to more than 62 million out of a total of 125 million species records in the ALA, which is hosted by Australia’s national science agency, CSIRO, and funded by the National Collaborative Research Infrastructure Strategy (NCRIS).

Dr Erin Roger, ALA’s Citizen Science Lead, said citizen science is the practice of the general public volunteering to engage in science, and offers enormous potential in filling knowledge gaps of many underrepresented species.

“More than 9.6 million new species occurrence records were added to the ALA from citizen scientists in 2022 alone,” Dr Roger said.

“Citizen science is a global movement and through improved technologies and the ability to integrate with other datasets to create ‘big data,’ this will help to solve some of the biggest ecological questions and ultimately deliver better species outcomes,” Dr Roger said.

[Learn how to become a citizen scientist and help contribute data to create a more detailed picture of Australia’s biodiversity.](#)

.....

What’s Australia’s most painful stinger?

The dreaded red fire ant is a real pain. But it is far from the biggest pain in the insect world. This invasive species — which now infests parts of Queensland and is subject to a national eradication program — gets its name from its sting, which apparently burns like fire.

On the pain scale that measures insect bites and stings, from mild tingling to bullet-wound agony, it rates a relatively modest 1.2, however. The scale reaches 4.0 — the sting of a giant wasp earning the description "blinding, fierce, shockingly electric" by the scientist who developed the [index](#).

Read more <https://www.abc.net.au/news/2023-09-23/fire-ants-wasps-hornets-schmidt-index-sting-ratings/>

The sting of spider wasps like the Australian orange spider wasp tops the pain index.(Supplied: CSIRO)



Help protect the coastal emu population

With the endangered coastal emu population estimated to be less than 50 individuals, quick action and filling knowledge gaps is needed to protect this species from extinction.

If you live in or around the Clarence Valley or Bungawalbin or will be visiting this area in between 13 - 15 October, you can help by joining the coastal emu population survey.

This population of coastal emus is important because it's genetically different from all other emu populations in Australia. This population is at risk of extinction within the next 50 years unless we act quickly to protect them.

Check out the details and learn more about how Saving our Species is working to secure the future of the coastal emu. Find out more <https://www.environment.nsw.gov.au/news/keeping-up-with-coastal-emu-conservation>



Two coastal emus (*Dromaius novaehollandiae*) on the NSW north coast Credit: Clarence Valley Council

.....

Wildlife Queensland - Backyard Beasties

A new online picture book [The Orange Spider Wasp](#) from the series BACKYARD BEASTIES was released recently by Wildlife Queensland. The unbelievable photos were taken by one of their volunteers, Jenny Thynne.

It's worth a look!

Check Your Choice

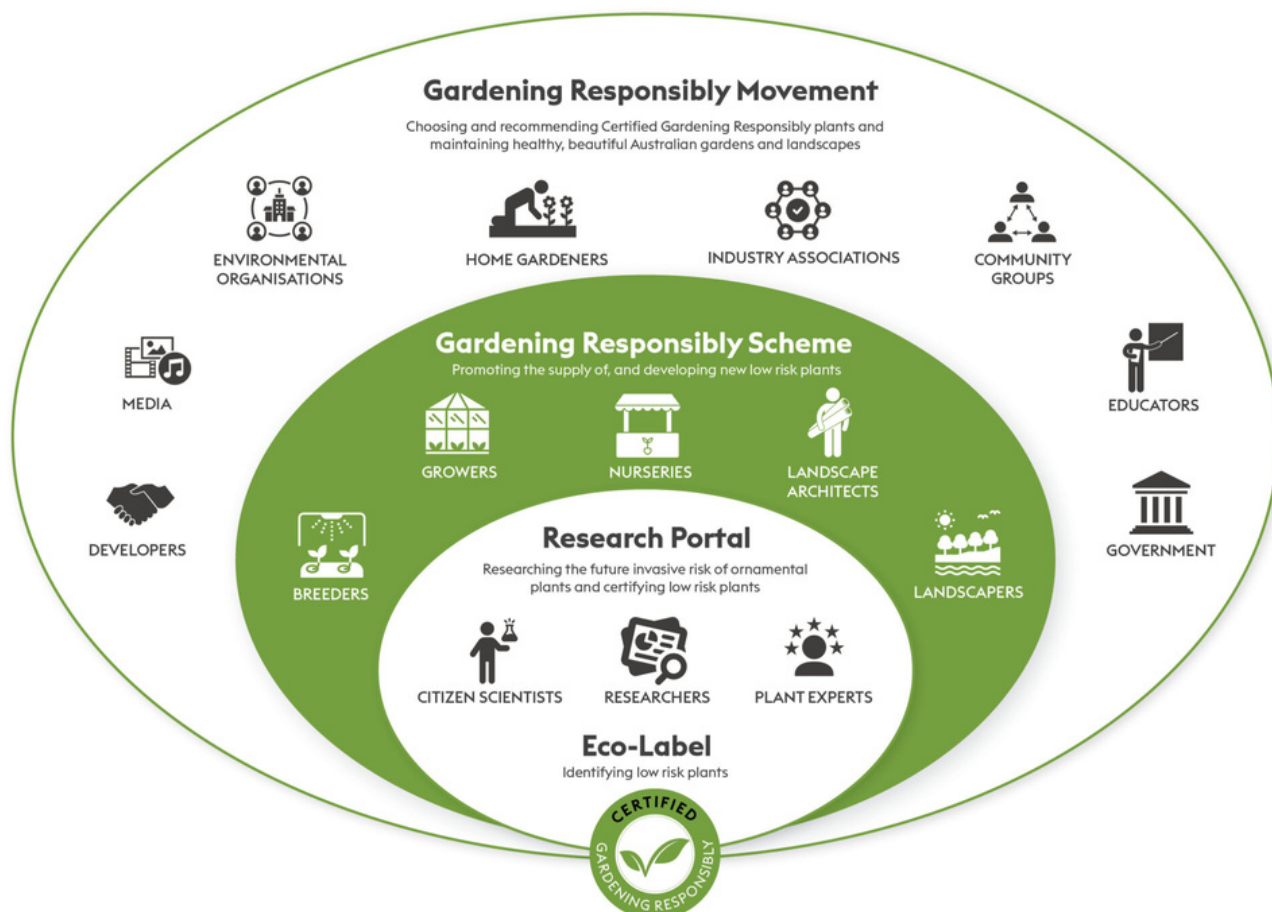
Does the garden plant you want have a low risk of becoming a landscape-scale invasive weed? As it's now spring and people are sprucing up their gardens, now is a good time to check that what you are planting is responsible.

Become part of the Gardening Responsibly movement and get access to lots of gardening responsibly resources and tips. There are four ways you can garden responsibly:

- Choose low invasive-risk plants for your project — search the [ever-growing list](#) of certified low-risk ornamental plants or get advice and plants from one of our Gardening Responsibly Scheme [suppliers](#).
- Recommend low invasive-risk plants to others — grow the movement by telling your neighbours, family, community group, organisation or clients about us! Chat over the fence or share content on [Facebook](#), [Instagram](#) and [LinkedIn](#).
- Research to find more low invasive-risk plants — if you're a plant expert or enthusiast, [sign up to the free Research Portal](#) to help assess and review even more ornamental plants.
- Maintain your low invasive-risk garden — head to the 'Learn' section of the website to dig deeper into how to review your existing garden, find tips for plant maintenance and to get the dirt on the problem with invasive plants.

Check your choice of plant is low risk by [searching recommended plants](#).

To keep up to date with the Gardening Responsibly Initiative and to find out when Certified Gardening Responsibly plants will be available in your area, simply [join the mailing list](#).



State of the world's orchids revealed in new report

Up to 45 per cent of all known flowering plant species across the globe could be under threat of extinction with the plant family Orchidaceae (orchids) among the most threatened, according to a new report. Kew's [State of the World's Plants and Fungi \(SOTWPF\) 2023 report](#), published recently, tackles the nature emergency by laying out the current condition of the world's plants and fungi. Australia's national science agency, CSIRO, contributed to the report with CSIRO orchid researcher, Dr Katharina Nargar, a senior author of the report's chapter on orchids.

"Plants and fungi sustain life on Earth and provide valuable ecosystem services, food, medicine, clothing, and raw materials. But the natural world is threatened by the dual crises of climate change and biodiversity loss," Dr Nargar said.

The SOTWPF report sets an important international standard for researchers and conservationists to annually track trends in the global status of plant and fungal diversity. Read more <https://www.csiro.au/news/All/News/2023/October/State-of-the-worlds-orchids-revealed-in-new-report>

Harvestable rights: NSW Gov reverts from 30% back to 10% (Courtesy Revive Northern Rivers)

In 2022, then Water Minister Kevin Anderson made an order under the Water Management Act 2000 (NSW) to triple the amount of water that landholders could drain from coastal catchments, substantially reducing the amount of water that flowed into NSW's coastal wetlands and rivers. Just around the time El Niño was officially declared by the BOM, the NSW Labor government reversed that decision made by the previous government. Here's a brief summary from NSW Government water:

From September 2023, landholders in NSW's coastal-draining catchments can only capture and store up to 10% of the average annual regional rainfall runoff from their landholding as harvestable rights water. The harvestable rights limit for these catchments was returned to 10% from 30% so work can progress on determining whether the current levels of water extraction in coastal catchments are sustainable in the long term.

If you're interested in how much you can harvest on your property, check out the harvestable rights [calculator](#).

The [Nature Conservation Council](#) of NSW (NCC) has been aware of this legislative change and is launching a new campaign, working to protect some of our most productive, valuable, and threatened ecosystems: coastal wetlands. Coastal wetlands are the estuaries, lagoons, rivers, marshes, lakes, floodplains and mangrove forests that act as the point of connection between the land and the sea. Where land and water meet, life is sparked. Some Traditional Custodians refer to this as the 'supermarket zone', where oysters cram the rocks, crabs grow fat, prawns breed by the millions and sea fish come to shelter, feed, and spawn.

The NCC are inviting the community to share "Why I Love My Wetlands" by sending through some pictures and a few words on what makes your favourite coastal wetland special to you. Just send it through to Sam Johnson - the Coastal Wetlands Community Organiser NCC at sjohnson@nature.org.au.

NATURE POSITIVE SYDNEY

A groundbreaking report, commissioned by the Committee for Sydney, sets out 10 actionable ways to increase nature in urban areas. The plan is to grow living infrastructure in a manner that engages community and supports Sydney's world-renowned rivers, parks, tree-lined streets and harbours.

The actions explore ways to increase nature through backyards and balconies, streets, laneways, parklands and pocket parks, rooftops, facades, schools & hospitals, infrastructure corridors, railways and roads, rivers & waterways, and greenfield development areas.

To view the report see <https://a21234.hostroomcdn.com/wp-content/uploads/2023/02/Committee-for-Sydney-Nature-Positive-Sydney-February-2023.pdf>

FEEL BETTER FOR FREE

The evidence based health and wellbeing benefits that come from regularly and internationally connecting with nature (using all of your senses), including caring for nature, for a minimum of 2 hours per week. Not sure where to begin? Use the suggestions on the second page of the Nature Dose guide to inspire you.

https://peopleandparks.org/wp-content/uploads/2023/09/THE-NATURE-DOSE_FINAL-digital.pdf

THE NATURE DOSE

Need some help to get started?

Here are some ideas for connecting with and caring for nature:

- Try camping
- Have a picnic in the park
- Build a bird or possum box
- Experiment with a plant-based diet
- Find a native plant in your street
- Find some grass, take your shoes off and feel the grass between your toes
- Close your eyes and listen to water flowing over rocks, or the wind rustling the leaves of a tree
- Notice what season it is based on the nature you can see
- Think about how weather affects the nature around you (including you)
- Take a snap of something in nature that grabs your attention
- Discover something new about your favourite animal
- Join a group caring for nature
- Watch the sunrise or sunset
- Go outside at night to notice the moon
- Eat breakfast in nature
- Search for parks in your area and visit one
- Go outside and smell nature's scents
- Sit against a tree and feel the bark against your back
- Wherever you are, Acknowledge Country
- Check your local council website to know what to recycle
- Plant a local, native tree
- Find out a nature fact and tell someone else
- Share a picture of your favourite nature spot
- Watch the sunlight filter through the trees
- Walk slowly and stop to notice nature
- Watch an insect
- Pick up some rubbish
- Take your lunch outside
- Have a coffee outside in nature
- Take photos in nature with a friend
- Adopt a pot plant and care for it
- Think twice before buying fast fashion
- Eat locally sourced food in season
- Touch a rock or a tree – Is it rough or smooth?
- Choose your favourite plant – Is it native to your area?

People and Parks Foundation 2023

New CSIRO handbook to guide Australian businesses towards nature positive future

A new handbook released today by Australia's national science agency, CSIRO, will guide businesses – including farmers, forest growers, mining companies and non-governmental organisations – on how to report and account for their natural assets to better protect our environment.

Much of the value and growth from our economy is drawn from natural resources as a variety of industries depend on, and profit, from them. However, that growth has coincided with a catastrophic decline in our natural systems; a decline that includes a 70 per cent reduction in the average species population size since 1970.

Natural capital accounting is gaining momentum as a way to quantify and integrate the value of nature into decision-making processes, fostering more sustainable and responsible practices to promote long-term environmental and economic well-being.

The Natural Capital Handbook delivers practical step-by-step guidelines on how to measure and incorporate natural assets such as clean air, water, soil and living things into their operations.

For further information and to download the handbook, see

<https://www.csiro.au/news/All/News/2023/September/New-CSIRO-handbook-to-guide-Australian-businesses-towards-nature-positive-future>

Hot waters ahead: how improved forecasting is helping manage marine heatwave risks

Marine heatwaves (MHWs) are prolonged oceanic warm water events that can have devastating impacts on marine ecosystems. These ecosystems include coral reefs and kelp forests, as well as ocean-dependent industries like fishing and tourism. Large climate drivers such as El Niño are known to impact the frequency, intensity and duration of MHWs.

Marine heatwaves can be caused by a range of factors, including ocean currents and the warming of the ocean surface from the atmosphere. Like terrestrial heatwaves they are categorised depending on their strength. Unfortunately, these one-off extreme heat events compound the damage that is already being caused by the long-term warming of the ocean.

MHWs are more common in El Niño years, and on previous occasions this has led to detrimental impacts on major fisheries, changes to the habitat of certain marine species, and severe coral bleaching.

Since 2020, we've been collaborating with the Bureau on a world-leading project to improve both the accuracy and the lead-time for MHW forecasting. This seasonal forecasting work, which uses the Bureau's ACCESS-S2 to combine sophisticated climate modelling with the latest observations, means it is now possible to predict increased sea temperatures not just a few days in advance, but up to three months ahead.

Further reading <https://www.csiro.au/en/news/All/Articles/2023/September/el-nino-marine-heatwaves>

A REMINDER: AUSTRALIA'S FIRE ALERT SYSTEM EXPLAINED AS EL NIÑO SETS SCENE FOR DRIER THAN AVERAGE SUMMER

In its simplest form, each fire category describes how dangerous a bushfire might be if it were to start that day. It does not signal the likelihood of a bushfire occurring, nor does it mean one is already underway.

Australasian Fire Authorities Council (AFAC) chief executive Rob Webb said the system was designed to be an early warning for the community about what they needed to think about.

There are four ratings, and their recommendations are:

- **Moderate:** Plan and prepare. You should stay up to date and be ready to act if there is a fire.
- **High:** Prepare to act. There is a heightened risk of fires in your area. Decide what you will do if one starts.
- **Extreme:** Take action now to protect your life and property. Fires will spread quickly and be extremely dangerous. Check your bushfire plan and make sure you and your property are ready. Reconsider travel through bushfire risk areas.
- **Catastrophic:** For your survival, leave bushfire risk areas. If a fire starts and takes hold, lives are likely to be lost. Stay safe by going to a safer place early in the morning, or the night before.

Further reading: <https://www.abc.net.au/news/2023-09-21/australia-catastrophic-fire-danger-warning-explained-el-nino/>

.....

What did Australia Learn from the last Drought?

The experience and the lessons of the 2019 drought are fresh in the minds of farmers. Now the challenge is to get ahead of the next one. At a national drought forum in Rockhampton, Queensland, Australia's agricultural leaders are working on plans to help regions cope with a return to dry conditions.

Federal Agriculture Minister Murray Watt said the government would focus on droughts in regard to climate change. "The reality is that farmers and rural communities are on the front line of climate change. Over the last 10 years, the average farm in Australia has lost about 23 per cent of its profit because of the effect of seasonal conditions."

Farmers and industry have worked alongside local governments to develop the plans, which cover community wellbeing, building skills and leadership, making local businesses and economies resilient, landscapes and collaboration.

Drought Resilience Plans are part of a new strategy, jointly funded by the federal and state government under the Future Drought Fund. Each region will be given \$300,000 to start implementing their plans, with an additional \$150,000 available for an implementation officer.

Read more <https://www.abc.net.au/news/rural/2023-09-26/drought-plans-announced-ahead-of-el-nino-weather/>



Seasonal Update – Managing dry times

Key speakers:

Lisa Castleman – Senior Land Services Officer, Agronomy:

- Assisting pasture growth and ensuring pasture recovery
- Growing fodder versus buying in

Nathan Jennings – Senior Land Services Officer, Livestock:

- Early weaning or creep feeding calves
- Temporary calf removal fact or fiction
- Supplementary feeding
 - Margin over feed cost
 - Maintenance versus production
 - Confinement feeding
- Sell versus feed – making the big decision

Phillip Kemsley, District Vet Lismore and Phillip Carter, District Vet Casino:

- Animal health and welfare in times of feed shortages

Dates and locations:

26 September: Woodenbong Public Hall
27 September: Kyogle Community Centre
3 October: Bonalbo Community Hall
10 October: Tabulum Public Hall
17 October: Rappville Hall
18 October: Murwillumbah (venue TBC)
24 October: Bexhill Hall
31 October: Mullumbimby Uniting Hall
1 November: Coraki Youth Hall

Details:

9:30 am Morning tea
10:00 am Presentations
12:00 pm Event finishes with lunch

RSVP and more information:

For catering purposes, please RSVP with your preferred location and the names and number of people attending by calling Local Land Services on 1300 795 299 or you can call or text details to Jessica Lock on 0439 857 146.

Please note we are also holding a Seasonal Conditions and Pasture Dieback session at the Casino RSM Club on 5 October.

REGENERATIVE FARMING

Zentvelds Coffee has invited local farmers for a great day ahead of learning and sharing!

We will hear about their farming story and their move to regenerative practices incorporating cover crops and bio stimulants as well as the farm gate sales and local distribution.

Coffee is a highly valued crop in our local area with plenty of opportunity given its ability to grow so well organically in our region. A great chance to learn more about regenerative practices within an orchard setting as well as coffee itself as a potential crop and a chance to bump heads with other farmers and landholders.

A nice video from Bec on her farm - [Benefits of cover cropping - YouTube](#)

WHEN Friday 3rd November 8.30am-12pm

WHERE: Newrybar

COST: free

Please bring appropriate walking closed shoes, sun protection and water bottle. Tea, coffee, and snacks will be provided and the chance to purchase some of Zentvelds lovely coffee.

Spaces are limited. Please RSVP to agriculture@byron.nsw.gov.au we also ask that by RSVP'ing you commit to the day and ensure you can make it. Or please let us know if you can't 😊



Soil Monitoring Challenge

Soils for Life is running a free 'Soil Monitoring Challenge' over the next couple 18 months that involves farmers 'taking the challenge' of doing 5 simple soil health tests, in the same fortnight as other farmers, once every 6 months for 18 months (3 times). Participants post pictures of their test results in a private facebook group and discuss their meaning with prompts from our team. The idea is to generate discussion and peer-learning.

WHEN: Starts October 16 over 12 months

More information including registration can be found here: [Help strengthen soil knowledge and capability](#)

SNIPPETS

Farmers are growing medicinal gum trees

Eight farmers in the Benalla region are growing gum trees for biotech company Gretals as it researches using pinocembrin as a treatment for neurodegenerative diseases.

Senior research fellow from the University of Melbourne, Jason Goodger studies the chemicals found in plants. Dr Goodger has found pharmaceutical flavonoid pinocembrin has particular advantages for diseases of the central nervous system.

Dr Goodger said the discovery of high volumes of the compound in gum trees had huge potential for the future pharmaceutical industry. "I see a future where we have loads of different eucalypts that we're growing for particular reasons, because nature is an amazing pharmacy. It grows some incredible compounds, but we just don't tap into it."

To read more <https://www.abc.net.au/news/rural/2023-09-20/medicinal-gum-trees-grown-in-benalla-for-gretals/>

Australian seaweed company named finalist in Prince William's prestigious Earthshot Prize

A Tasmanian seaweed business has been shortlisted for the Earthshot Prize, which "searches for extraordinary solutions to the world's greatest environmental challenges".

The company, Sea Forest, cultivates asparagopsis in one of the largest marine leases in the southern hemisphere, in order to develop feed which prevents methane production in sheep and cattle. The company wants to produce enough seaweed to feed two million head of cattle.

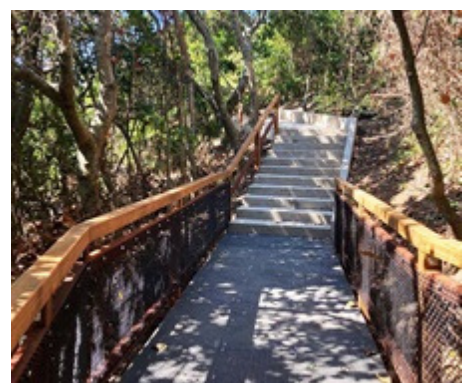
The winners of the Earthshot Prize will be announced in Singapore in November and receive around \$1.9 million to aid their work.

Read more <https://www.abc.net.au/news/2023-09-20/sam-elsom-sea-forest-prince-william-earthshot-prize/>

Cape Byron walking track receives much-needed facelift

A 160-metre section of the Cape Byron walking track leading from Wategos Beach towards the Lighthouse has been upgraded, offering visitors a safer, more accessible, and environmentally sustainable walking experience.

NSW National Parks and Wildlife Service Area Manager Jen Atkins said the Cape Byron walking track is one of the key visitor locations within Cape Byron State Conservation Area, with an estimated half a million visitors using the track each year.



EVENTS AND SEMINARS

Sustain's Urban Agriculture Forum and Community Gardens Australia National Gathering 2023

17-19 November | National Centre of Indigenous Excellence, Redfern, Sydney

How can urban agriculture create more nourishing cities and towns and foster more socially and ecologically just urban environments? This is an opportunity for policy makers, practitioners and innovators to explore these questions, while networking and exchanging knowledge about leading practice in the urban agriculture sector.

For more information and to register <https://events.humanitix.com/sustain-s-urban-agriculture-forum-and-community-gardens-australia-national-gathering-2023/tickets>

.....

Matt Landos Presentation “Connecting the Drops”

An incredible knowledgeable presentation on the history of our region, where we are at and the utmost importance of creating positive change as landholders and custodians. I encourage all to take the time to sit down and watch this well documented historical journey to appreciate how our decisions on land use influence productivity and the entire ecosystem. (1hr30min)

WATCH HERE: [Connecting the Drops Matt Landos Presentation - YouTube](#)

.....

Green Drinks

Get ready to join us again on Friday 20th October, Wandana Brewing Co, Mullumbimby, 4pm-6pm

Guest speakers Christina Webster and James Barrie from the Save Wallum collective will share the latest on the campaign to protect this immense ecological and cultural values of the Scribbly gum ecosystems at threat from development in Brunswick heads. Join us to hear more on this significant local campaign and how you can get involved.

Here's the [FB event](#), be sure to check yourself as going, and share it with your networks.

.....

Mother Earth Educators

Introducing Mother Earth Educators (MEE) weekly classes for young children, an integrated nature-based program that aims to plug children into the outdoors. Held every Friday at Mullumbimby Community Gardens, this program is perfect for parents who want to educate their children about the environment while having fun!

The program is designed to help children learn about the importance of protecting the environment and developing a love for nature at an early age. MME believes that by educating children about the environment, we can create a better future for them and our planet.

They are now open for bookings for Term 4. Don't miss out on this fantastic opportunity to help your child connect with nature and learn about the environment. Spread the word with those in our community who you know would benefit! For more information and booking details, please email Nadia at mothereartheeducators@gmail.com



community
EVENT



FARMING *family* REBOOT

**FREE
EVENT**

from
10.20am
**Tuesday
November 14**
to 12.30pm
**Thursday
November 16**
GRAFTON | NSW

Take some time out as a family to...

- review your farming business and its performance
- consider critical decision making in a variable climate
- think about how best to work together
- be exposed to practical new ideas and research

MEALS & ACCOMMODATION INCLUDED



Scan for Expressions of Interest & Enquiries

or call **Lu Hogan** on **0427 687 432**

This event is jointly funded through the Australian Government's Future Drought Fund, University of New England and Rural Aid.





Native bees in schools conference

The Australian Native Bee Company in partnership with North Coast Regional Landcare Network are hosting a conference to teach educators/teachers about best practice methods to utilise native bees to improve learning outcomes for students.

Monday 06 November
8.30am - 4.00pm

The Farm, Ewingsdale
\$280pp +GST

The day will include of a series of workshops:

- Native Bee Biology
- Planting guides for schools
- Bee box design/solitary hive construction
- Cultural significance of Native bees
- How to best utilise native bees in schools (examples provided for preschool, primary school, high school and STEM).

Lunch, afternoon tea and tea and coffee provided on the day.

Limited spaces available

Flooding events from 2022 severely impacted the built environment as well as flora and fauna on the Northern Rivers. The focus now is on rebuilding schools, communities, morale and restoring the natural environment. Native bees play an essential role in increasing biodiversity and sustainability. Knowledge of how to utilise native bees to achieve the above-mentioned focus areas is the purpose of the conference.



Tickets: australiannativebeeco.com/workshops/p/beesinschools-6nov
0404 831 659 | australiannativebeeco.com



North Coast
Regional
Landcare

Australian Pollinator Week - 11 -19 November 2023

The Wheen Bee Foundation are hosting two a FREE Webinar during Australian Pollinator Week!

The first webinar is Powerful Pollinators at 12pm on Sunday 12 November.

Join Dr Anna Carrucan a second-generation beekeeper, with a PhD in botany and Dr Megan Halcroft from Bees Business, for a webinar to:

- Find out how pollinators can play a role in enhancing food production yields and supporting our natural environment
- Understand the benefits of creating pollinator havens on farms of all scales, in gardens and in veggie patches
- Discover how to encourage pollinator populations on your property
- Be introduced to our new planting guides and how they can be used.

Bring your questions!

To register for the event [click here](#)



The second webinar at 12pm on 15th November is on Integrated Pest and Pollinator Management includes three speakers and will explore;

- Integrated Pest Management - What is it? Am I doing it? If not, how can I and why should I?
- Beneficial insects - There are a range of ecosystem services provided by insects for free. Pollination is just one of them. Learn about some others.
- What is the difference between a predator and a parasite? How can I manage them?
- What are biological and cultural controls? How to use them to reduce the need for chemical controls.
- How can I learn more?

Bring your questions for this highly informative presentation. [Click here to register.](#)

Hosted by Wheen Bee Foundation and Bee Friendly Farming ®

WEED OF THE MONTH

Coral Berry (*Rivina humilis*)

A small shrub or woody herbaceous plant that prefers damp and shady habitats. Its alternately arranged leaves (3-13 cm long) are mostly hairless with entire margins and pointed tips. Its whitish flowers are arranged in elongated clusters (5-15 cm long) in the forks of the upper leaves. These flowers have four small 'petals' (i.e. perianth segments) that turn from white or pinkish to greenish as they mature. Its fruit small rounded berries (3-4 mm across) turn from green to bright glossy red as they mature.

Flowers in Spring and Summer This species reproduces by seed, which are probably dispersed by water and in mud attached to animals and vehicles.



WORKING BEES

Why not get out and get involved in one of our local groups?

For all Landcare Working Bees please wear protective clothing - long pants, long-sleeved shirt, closed-in shoes, hat, gloves and bring water, sunscreen, and insect repellent. Please always contact the group co-ordinators before attending a working bee as plans do change!

Bangalow Land and Rivercare, Bangalow

WHEN: every Saturday 8:30am

WHERE: find out from

CONTACT: Noelene Plummer bangalowlandcare@gmail.com 0431 20 0638 6687 4470

Friends of Lilli Pilli (Byron Bay)

WHEN: 1st Saturday of the month 3:30pm - 5:00pm

WHERE: At entrance to Lilli Pilli (contact Deb).

CONTACT: Deb Jorgensen deborah.jorgensen60@gmail.com 0434 254 802

Green and Clean Awareness Team, Byron Bay

WHEN: 3rd Sunday of the month 9:00am

WHERE: Meet Main Beach, Byron Bay

CONTACT: Peter Farmakis peter.farmakis@gmail.com 0488 715 565

Heritage Park Landcare, Mullumbimby

WHEN: Saturdays 9:00am – 11:00 am

WHERE: Heritage Park, Mullumbimby

CONTACT: Diana Hughes bromspot@gmail.com

Jinangong Landcare, Ocean Shores

WHEN: 1st Sunday of the month

WHERE: The Tunnel Road, Ocean Shores

CONTACT: Ian Parer ianparer@hotmail.com

Mullum Town Landcare, Mullumbimby

WHEN: Morning of last Sunday of the month

WHERE: find out from John Tann

CONTACT: John Tann johntann99@gmail.com

Ocean Shores Landcare, Ocean Shores

WHEN: each Thursday at 8.30 – 11.00 am (8.00am DST)

WHERE: corner of Yallakool Drive and Warrambool Road, Ocean Shores

CONTACT: David Kemp dnkemp77@gmail.com 0427 650 861

Tallowood Ridge Locality Landcare, Tallowood Ridge Mullumbimby

WHEN: Second Saturday of the month from 3pm (winter), 4pm (summer).

WHERE: Gathering Tree Pocket Park, Cockatoo Cres Tallowood Ridge Estate

CONTACT: Joanne McMurtry jmcmurtry@bigpond.com

Tyagarah Landcare

WHEN: Each Thursday 9:00am – 11:00am

WHERE: 23 Prestons Lane, Tyagarah

CONTACT: Bela Allen bela_allen@yahoo.com 6684 7113

Can't find a group near you? We have many other groups who meet on an ad hoc basis (contact us for more details) or if there isn't an existing group in your neighbourhood or you are interested in looking after a particular area, BVL can help you to form a locality group under the BVL umbrella.

LINKS

- . Arakwal <http://arakwal.com.au/>
- . Australian Association of Bush Regenerators <http://aabr.org.au>
- . Border Rangers Alliance http://www.greateasternranges.org.au/border_ranges/overview/overview
- . Bangalow Koalas <http://www.bangalowkoalas.com.au/>
- . Bangalow River and Landcare <http://www.bangalowlandcare.org.au/>
- . Big Scrub Landcare <https://www.bigscrubrainforest.org.au/>
- . Brunswick Valley Landcare <http://www.brunswickvalleylandcare.org.au/>
- . Byron Bird Buddies <http://www.byronbirdbuddies.com.au/>
- . Byron Community College <http://www.byroncollege.org.au/>
- . Byron Shire Council <http://www.byron.nsw.gov.au/>
- . EnviTE www.envite.org.au
- . Environmental Trust <http://www.environment.nsw.gov.au/grants/envtrust.htm>
- . Friends of the Koala www.friendsofthekoala.org
- . Federal Landcare Inc federalandcare@gmail.com
- . Local Land Services www.northcoast.lls.nsw.gov.au
- . North Coast Local Land Services <http://northcoast.lls.nsw.gov.au/>
- . Border Ranges Richmond Valley Landcare www.brrvln.org.au
- . Mullumbimby Community Gardens <http://mullumcommunitygarden.wordpress.com/>
- . North Coast Nature <http://www.northcoastnature.org.au/>
- . Richmond Landcare Inc. <http://www.richmondlandcare.org/>
- . Rous County Council (formerly Far North Coast Weeds) <http://rous.nsw.gov.au/>
- . Soilcare http://www.soilcare.org_
- . Tweed Landcare Inc. <http://www.tweedlandcare.org.au/>
- . Wilson's Creek Huonbrook Landcare <http://www.wilsonscreeklandcare.mullum.com.au/>

**For information about Landcare or other natural resource issues in Byron shire please contact
Landcare Coordinator, Alison Ratcliffe 6626 7028
(Mon, Tues, Wed)**

info@brunswickvalleylandcare.org.au

Community Liaison Officer, Joanne McMurtry 0409 925 330

jmcmurtry@brunswickvalleylandcare.org.au

www.brunswickvalleylandcare.org.au

