




Newsletter for Landcare and Dunecare in Byron Shire

<http://www.brunswickvalleylandcare.org.au/>

 Connect on facebook

April 2016

MAY	1 Water Bugs and Creek Health Workshop
	6 Koala Connections Conference
	8 Mullum Music Festival Community Tree Planting
	15 Identifying Trees Through Their Trunks and Bark Workshop
JUNE	18 Renew Fest
JULY	1 Field Day to Visit Regen Trail Plots
	22 Weed ID Workshop

Meet some old and new faces

by Alison Ratcliffe

Last month myself and Bela Allen (on behalf of the BVL committee) attended the Local Landcare Coordinator Initiative Induction and Workshop, held in Stockton, Newcastle. It was designed to induct the newly appointed local Landcare coordinators and outline the role they will play in their communities.

North Coast Regional Landcare has successfully secured 3.75 Landcare Coordinator positions to be shared across the

region as a part of the State Government's Local Landcare Coordinator Initiative (LLCI).

Of this, Brunswick Valley Landcare has received additional funding for the equivalent of just over 1 day per week so I have taken on this role in addition to my Support Officer role and will now be working 3 days per week!

Under the NSW Government's 2015-2019 Landcare Support Program (\$15 million funding) the NSW Government and Landcare NSW established the Local Landcare Coordinator Initiative – a network of 66 part-time Local Coordinators hosted by community organisations to support volunteer activity across NSW.

Mr. Rob Dulhunty, Chair, Landcare NSW said that the event had been an excellent start to the program, "I see the Local Landcare Coordinator Initiative as the catalyst for a resurgence of Landcare in NSW – over these few days so many people have remarked to me what an exciting time it is to be part of Landcare."

As an 'old hand' in Landcare, I want to remind everyone that the training and information sessions on planning, reporting and strategies are very helpful, we must not forget the magic of Landcare is that



The 66 New South Wales Landcare Coordinators



Most of the North Coast team, representing all 11 networks.

people draw on their intrinsic motivation to participate.” David Henderson, Southern New England Landcare Board member

“It was inspirational to see the depth of experience, expertise and passion in Landcare. As a new coordinator, the welcome and support I have received from the volunteers involved in Landcare on the North Coast where I will be based has been outstanding. It has made me realise that I can

achieve things locally while being part of a statewide network, and that this is a movement I can be part of for life.” Logan

Zingus, Nambucca Valley Landcare

Share, learn and connect was the theme of a series of speakers and workshops designed to help to develop participants’ skills in understanding people and community organisations, facilitation and media as well as communicating the Landcare story to the broader community.

“The energy and atmosphere of the meeting took me back to an earlier era when I was a new Landcare coordinator in Victoria, the sense of enthusiasm, the opportunities ahead ... There exists at the moment a great opportunity for partnership between LLS and Landcare, to work together to build trust at the local and regional scale.” Erlina Compton, GM Western LLS

Across the north coast there are 11 Coordinator positions based in 11 Landcare Networks which cover the area from Tweed Heads to Port Macquarie. These groups all joined under the North Coast Regional Landcare Network to jointly bid for the positions.

The additional support means that I will have more time to support our groups, volunteers, landholders, schools and the wider community.

Sustaining Landcare

Sustaining Landcare is part of the 15 million funding. This is all about developing a sustainable funding model for long term support of the volunteer effort across NSW.

A sustainable long term funding model is needed for the services and structures that support Landcare groups.

Just as Surf Life Saving, the Rural Fire Service or State Emergency Service need professional support to allow them to focus on the important work they do as volunteers, so does Landcare.

Sustaining Landcare will research appropriate models to secure and manage on-going funding.

Landcare will continue to work with State, Federal and Local Government partners but also explore avenues to generate new funding sources. They are asking for input from the community, please go to

<http://landcarensw.org.au/partnerships/sustaining-landcare/>



The Far North Coast Team, from left to right: Lyn Thomson and Hannah Rice-Hayes from Richmond Landcare Inc, Emma Stone from Border Ranges Richmond Valley Landcare, Alison Ratcliffe from Brunswick Valley Landcare, Amalia Phalow from Tweed Landcare and Tanya Jobling from Upper Clarence Landcare.

LANDCARE
SPECIAL OFFER

Big sky,
Big secrets,
Big betrayal...



THOMAS MURRAY AND THE UPSIDE DOWN RIVER

An epic new play from Reg Cribb, the writer of *Last Cab to Darwin*

Invoking the expansive, isolating beauty of rural Australia, Reg Cribb's epic new play is about a man ravaged by drought, family secrets and love.

The Murray family have been farming the land along the Darling River for five generations. For Tom Murray, it's all he's ever known. When his childhood friends Lucy and Billy reappear, deep friendships are tested, and secrets, long buried, are finally awakened – Tom must make the long journey down-stream to reconcile past wrongs and to fight for his wife.

Friday 15th & Saturday 16 April 2016

NORPA at Lismore City Hall
2pm (Saturday only) & 7.30pm

Diner & bar open 6pm.

Join the Q&A with playwright Reg Cribb and Director Chris Bendall following the performance.

Special Landcare offer

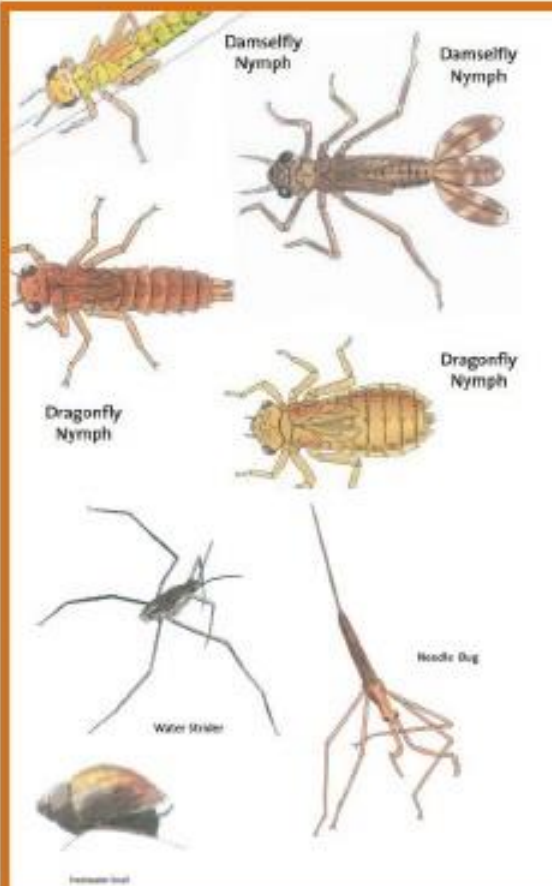
\$20 tickets to 2pm matinee Saturday 16 April.

Simply quote promotional code 'LAND' when purchasing online or by phone. Strictly limited offer. Tickets subject to availability.

norpa

 **Southern Cross**
University

PERFORMANCE PARTNER



FREE WORKSHOP

Water Bugs and Creek Health

Want to learn about the bugs that live in our creeks and what they tell us about the creek health ?

In this workshop, Barbara Jensen will teach you the basics.

Trainer: Barbara Jensen
Date: Sunday the 1st of May 2016
Time: 9:30 am – 12:00 pm
Location: Main Arm – location provided with registration
Bookings Essential: Please contact Justin by email: j.ecologic@gmail.com



This fun and family friendly workshop will include:

- Catching and identifying water bugs
- Monitoring methods
- The catchment, creek and us
- What bugs tell us about our creek health



This project is supported by Brunswick Valley Landcare through funding from the NSW Government.





Bushfoods Growers in Demand!

Are you an Aboriginal Land owner, or have access to land that can be utilised to grow native foods?

Do you want to explore the opportunities through a practical field day looking at the Industry, the products and the opportunities?

When: Monday 2nd May 2016

Time: 9am to 4pm

Where: We will be visiting 3 operational Bushfood farms/nurseries in Rosebank, The Channon and Nimbin

Cost: free

Transport: Bus transport will be provided pickup from Lismore

Note: Please wear appropriate outdoor clothes- shoes, hat. Please ensure you bring your own water bottle. BBQ Lunch and snacks will be provided throughout the day.

Itinerary:

9am- Meet bus in Lismore

Travel to Rosebank to Finger lime farm. Discuss Finger Lime farming, current demand, growing tips etc.

Morning tea

Travel to Myrtle Farms in The Channon. Discuss issues, demand, market forces, growing, and tour farm

Travel to Ngulingah LALC property at Nimbin Rocks- BBQ Lunch

View nursery and bushfood plantings

Participate in Native bee workshop

Return to Lismore – approx. 4pm

Workshops will also be held in Mid North coast and far west during May and June

More Information? Contact: Roxanne Smith PH: 02 66 273 202

Email Roxanne.smith@industry.nsw.gov.au


REGISTRATION IS ESSENTIAL- REGISTER ONLINE- FREE

<https://www.eventbrite.com.au/e/bushfoods-field-trip-workshop-tickets-24275806591>



Artwork from Alison Williams ©





The Tweed Byron Koala Connections project team invites you to share stories and lessons from the Koala Connections project.

Tweed Byron Koala Connections commenced in 2013 aiming to address the threats to the coastal koala populations in the two Shires.

Koala Connections has combined science, strategic thinking, innovation and community engagement to deliver a critical response to koala recovery. The project has created 55 hectares of new koala habitat on more than 120 sites.

Presentations and discussions at the forum will include the ins and outs of large scale revegetation, fire management, koala roads, landholder engagement and future direction.

This will be a unique opportunity to discuss koala recovery project issues with the entire team and to celebrate the successes of the project.

The event is free but bookings are essential. [Click here](#) to secure your ticket

GREEN GLOBE
Winner 2014



WORLD ENVIRONMENT DAY AWARDS
FINALIST 2015



BANKSIA
SUSTAINABILITY AWARDS 2015
CATEGORY FINALIST



TWEED BYRON KOALA CONNECTIONS FORUM 2016
FRIDAY 6 MAY 2016,
BYRON COMMUNITY CENTRE,
BYRON BAY

Bookings through <http://www.eventbrite.com.au/e/tweed-byron-koala-connections-forum-tickets-22428640668>

DO YOU WANT TO KNOW MORE ABOUT OUR AUSSIE ICON?



Come along on Saturday, April 30th to a *Friends of the Koala Inc.*

Koala Educational Workshop

Includes basic koala health and behaviour assessment handling and rescue techniques

Southern Cross University Room Z182

9am registration for 9:15am start; until early afternoon

Cost : \$10 (members) \$15 (non-members)

Includes morning tea and lunch

Bookings are essential so please RSVP on (02) 66221233 or via email info@friendsofthekoala.org

A special invitation to the 6th ANNUAL MULLUM MUSIC FESTIVAL TREE PLANTING!

Celebrating Mums!

Join us on Mothers Day and Plant a local native tree for your Mum, or with your Mum, and not to forget the Koala mums.

Sunday 8th May

Free live music will be provided.

Brunswick Valley Landcare will be providing a delicious BBQ brunch (gold coin donation).



Come and join landowners, landcarers and land users to plant 1000 riverbank and koala food and shelter plants. This will provide much-needed habitat along the Byron Shire Council road reserve in the organic farms precinct in Left Bank Road Mullumbimby (near the Shearwater School and Fossil Farm Organics). The site will be special location with the planting of trees for all mothers, past, present and future. Plus enjoy the entertainment provided by Mullum Music Festival.



Planting commences at 8.30am until 10 am.

Music and refreshments from 10 am to 12.30 pm.

This year the 5000th Mullum Music festival tree will be planted by the MMF team

Please bring drinking water and wear gloves, long sleeves and long pants, with protective footwear. Trees will be provided and laid out ready for planting with all holes ready.

Previous plantings were at the Mullumbimby Community Gardens, Mullumbimby 'Horse paddock' and Showgrounds and Tyagarah Crown lands.

The MULLUM MUSIC FESTIVAL PROGRAM is supported by Uncle Tom's Pies, the Mullum Music festival team, Brunswick Valley Landcare and Byron Shire Council and the federal government Koala Connections program. Volunteers from Brunswick Valley Landcare are assisting with organisation of food and with the planting of the trees. The local community is helping with site preparation for planting, organic mulch and organisation. Byron Shire Council and Koala Connections are assisting with equipment, plants and communications. The project is supported by the adjoining neighbours

For more information, contact Koala Connections

Project Officer, Jo Green on 6626 7068.



Festival Director Glenn wright planting tress with daughters Noni & Amelie at the MMF Tree planting



Australian Government



Brunswick Valley Landcare invites you to a

FREE WORKSHOP

Identifying Trees using Barks and Trunks



Ever wondered how to identify a tree when all you can see is the trunk?

This workshop will teach you skills to identify rainforest trees using bark and trunk features.

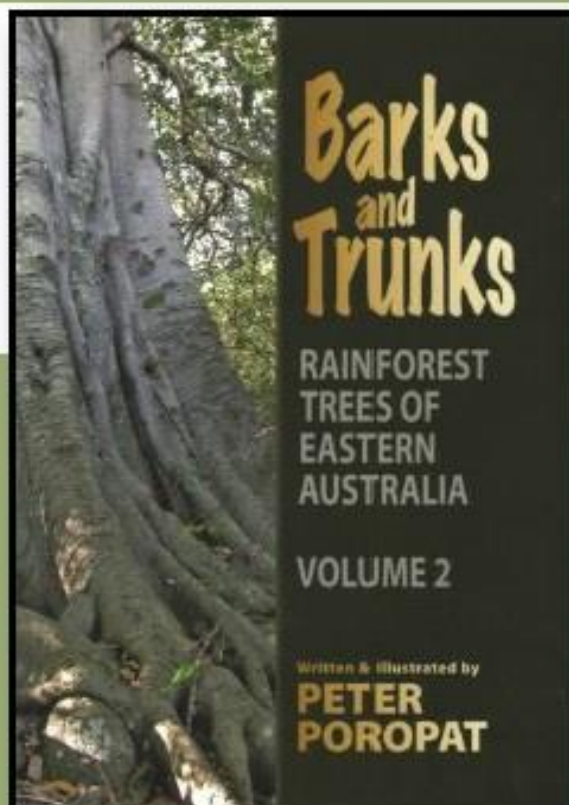
Come and learn from Peter Poropat a bark and trunk expert and author of two books.

Trainer: Peter Poropat
Date: Sunday 15th May 2016
Time: 9:00 am – 1:00 pm
Location: The Pocket (details will be provided with reservation)
Bookings Essential: Please contact Justin Mallee
j.ecologic@gmail.com

**Come and walk among the giants in
some ancient rainforest.**

Please bring the following along to the workshop

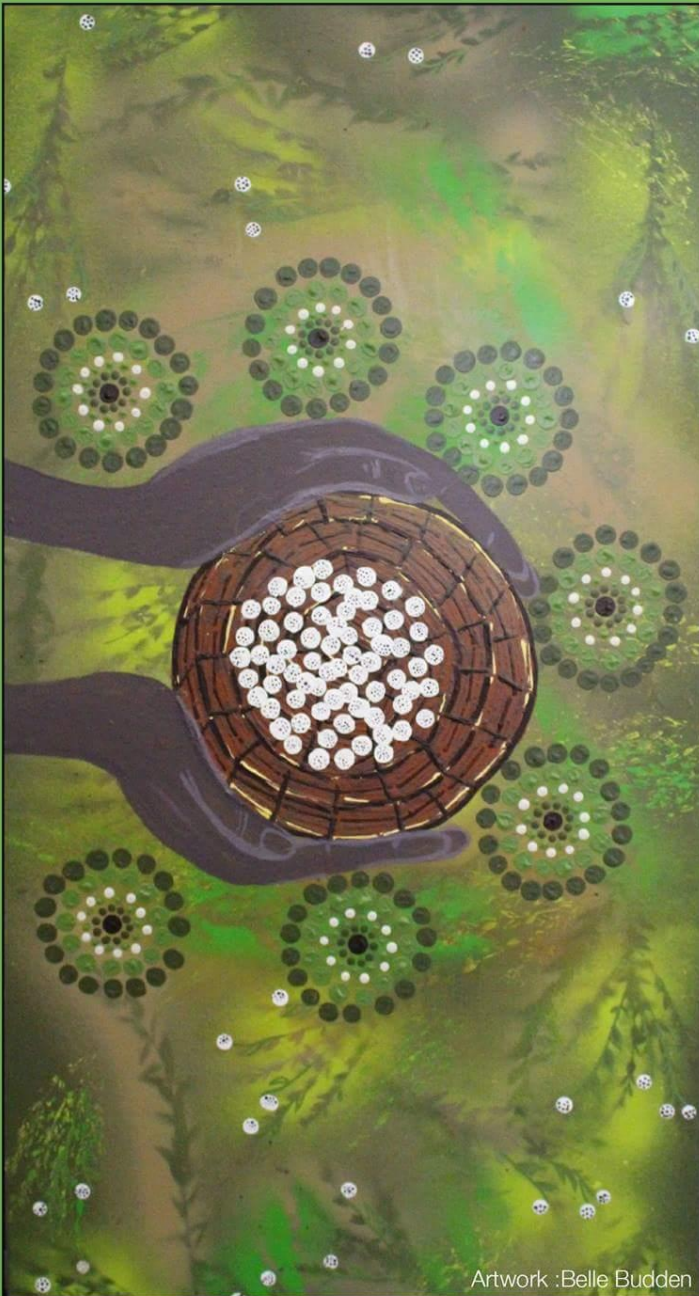
- Water, snacks and sturdy shoes
- Optional – binoculars, camera, pen, note book, hand lens
- Optional - Bark and Trunks Volume 1 & 2 – Both books will be available for purchase from Peter at the workshop (cash only).



A light morning tea will be provided.

This project is supported by Brunswick Valley Landcare through funding from the NSW Government.





Artwork : Belle Budden

Autumn

in Bundjalung Country Aboriginal Arts Exhibition

The third in a series of Aboriginal Arts Exhibitions celebrating our connection to country through the seasons.

Featuring the work of Nickolla Clark, Kaitlyn Clark, Rikkara McGuinness, Nigel Stewart, Oral Roberts, Sean Kay, Tim Ives, Mirra Winni Gaze, Jason Campbell, Dhinawan Baker, Leanne Hamilton, Leweena Williams Kiaron Assan, Coedie MCarthy, Scott Sentence, Daniel Hend, Belle Budden and more to be announced.

Opening Night Friday 29 April 6:00pm

Closing Night Sunday 8 May

Mullumbimby Civic Hall, Dalley St, Mullumbimby

**Monday 2 and Tuesday 3 May open for schools and other community groups
(Bookings essential)**

For more information contact Belle Arnold 6626 7226



GRANTS WORKSHOP

Tamara Smith is hosting a Grants Writing Workshop for community groups and not-for profit groups in our area. This workshop will empower community groups to write successful grant applications and seek additional funding.

“The Grants Guy” Keith Whelan will be coming up from Sydney to facilitate this workshop. Keith specialises in grant application writing, tender writing, crowd funding, volunteer management, and fundraising. This workshop is aimed at the community, multicultural, charitable, arts, and not-for-profit and sports sectors.

When: **April 19th 2016** in Ballina

Time: 5pm-8pm Cost: Free

RSVP essential, places limited. Please call our office or register below to reserve your place.

http://www.tamarasmith.org.au/grants_workshop

Lismore Council Rural Landholder Initiative Field Days Coming Up

The next two Rural Landholders field days will be very interesting, and feature a line up of inspiring Landcarers and member groups!

Register now 1300 87 83 87.

Rosebank Rural Lifestyle Biodiversity Field Day

Friday, 29 April, 9am to 2pm

Focus: How small rural lifestyle blocks fit into the broader

ecological landscape and how restoration can help connect wildlife and habitat corridors.

Who should attend: Rosebank landholders keen to make an impact on weeds and improve habitat on their properties. Also people new to the north-eastern catchments who want to better understand rainforest restoration processes and find community support.

Monaltrie Grazing with Biodiversity and Solar Off-stream Watering Field Day

Thursday, 12 May, 9am to 2pm

Focus: Riparian restoration through active revegetation, grazing exclusion, and habitat renewal. This field day will be conducted with the Office and Environment and Heritage, which will demonstrate solar pumping technology and NSW Farmers' renewable energy programs.

Who should attend: Graziers across the Lismore Local Government Area interested in energy efficient technology and cost savings, soil health improvement, strategic grazing and floodplain riverbank stabilisation.



ROSEBANK RURAL LIFESTYLE BIODIVERSITY FIELD DAY

Friday, 29 April, 8.45am to 2pm (includes morning tea and lunch)

Are you new to the rural lifestyle in the Lismore City Council area? Has your property got a weed infestation problem with camphor, lantana, privet or vines? This field day is for landholders interested in bush regeneration on their rural properties in the Rosebank, Corndale, Clunes and Eltham areas. Learn from experienced bush regenerators, witness and hear about tried and true methods, and find inspiration to tackle that seemingly insurmountable weed problem. Learn skills and know where to start, plan and implement a bush regeneration project.

RSVP 1300 87 83 87



2016

PEOPLE, PLANET AND PROFITS

6th National NRM Knowledge Conference

6th – 8th June 2016 Novotel Pacific Bay, Coffs Harbour NSW

Conference Program is now available <http://www.conference.nrmregionsaustralia.com.au/docs/2016-NRM-Conference-Program.pdf>

Claim the date - 2016 National Landcare Conference and Awards 21th – 23rd September 2016

Celebrating from the place where it all began, the 2016 National Landcare Conference and Awards will be held at the Melbourne convention and Exhibition centre. The National Landcare Awards ceremony and gala dinner will this year feature 69 finalists, nominated across nine categories, from all parts of Australia. Further information about the call for abstracts, event registration and conference program will be announced shortly.

AABR's 'Online restoration videos for learners' project regenTV Kicks off!

The AABR (Australian Association of Bush Regenerators) is inviting organisations to share the resources and videos as they become available within your networks and social networks. In 2015 the Australian Association of Bush Regenerators (AABR) successfully applied to the Environmental Trust for funding for the Online restoration videos for learners project- regenTV. Over the next three years the project will produce and disseminate approximately 50 indexed videos, five worksheets and five factsheets that relate to the National Restoration Standards. Check out our monthly general interest video for a taster!



More information

<http://aabr.cmail20.com/t/ViewEmail/i/0E2E74F08EFD6CBF/6AEDCC9BF448449044D0DD5392A9C75A>

Work With Nature this April!

Do you love getting out into nature?

From 18 - 24 April, Nature Conservancy Australia invites you to swap your desk for the great outdoors by working outside for an hour during Work With Nature Week. Whether it's a walking meeting or a team brainstorming session in the park, you can register to share a desk with nature for an hour this April. Find out more [here](#).



18TH ANNUAL
Big Scrub Rainforest Day
Sunday 16 October 2016
ROCKY CREEK DAM

PRESENTED BY ROUS WATER & BIG SCRUB LANDCARE | ORGANISED IN ASSOCIATION WITH ENVITE
Further information available at www.bigscrubrainforest.org.au

STORIES to inspire and give you hope

Regents have their day in court — and win!

A ground-breaking court case has secured the future of a threatened area of crucial Regent Honeyeater habitat in the Hunter region of NSW.

Depending heavily on Regent Honeyeater monitoring data collected by BirdLife Australia, the court found “Preservation of this area is... of vital importance to the long term survival of the” Regent Honeyeater.

Click [here](#) for more.



Tasmanian Bushfire Appeal

By Foundation for National Parks & Wildlife

There have been over 40 devastating fires ravaging wilderness areas across Tasmania, burning more than 100,000 hectares since January in some of the states most sensitive ecosystems such as Tasmania’s alpine wilderness. It has instantly killed plants that have lived for thousands of years such as the Pencil Pine.

Some of Tasmania’s most threatened animals live in these alpine areas, such as the Tassie Devil, Tasmanian Wedge-tailed Eagle, Spotted-tailed Quoll along with many other native animals.

You can help!

We need your help to feed and treat wildlife that survived these devastating fires. Animals with significant injuries will also need to be taken into care. Your help is also needed to fund monitoring efforts, so scientists can understand the long term impact of these fires, which are so unusual in the alpine environment. The Foundation for National Parks & Wildlife (FNPW) started this fundraising campaign to mount a two pronged response to these devastating fires.

<https://chuffed.org/project/bushfire-appeal-for-tasmanias-wildlife>



A trial in the US that will determine if we have a right to a livable future

A group of youngsters [just won](#) a major decision in their efforts to sue the US federal government over climate change. An Oregon judge ruled Friday that their lawsuit, which alleges the government violated the constitutional rights of the next generation by allowing the pollution that has caused climate change, can go forward.

Federal District Court Magistrate Judge Thomas Coffin ruled against the federal government and fossil fuel companies’ motions to dismiss the case, deciding in favor of 21 young plaintiffs and Dr. James Hansen.

The federal lawsuit is part of a broad effort led by Oregon-based nonprofit Our Children’s Trust. The group and its allies have filed lawsuits and petitions in every state in the country. Filed in August, the complaint alleges that the U.S. government has known for half a century that greenhouse gases from fossil fuels cause global warming and climate change.

“This will be the trial of the century that will determine if we have a right to a livable future, or if corporate power will continue to deny our rights for the sake of their own wealth,” 19-year-old lead plaintiff Kelsey Juliana said in a statement following the ruling.

Read more: <http://thinkprogress.org/climate/2016/04/10/3768092/climate-trust-suit-moves-forward/>



Saving the Littoral Rainforest at Tyagarah by Bela Allen

A valuable small remnant of Littoral Rainforest, a Threatened Ecological Community, exists on Crown Land, at Grays Lane, Tyagarah. Brunswick Valley Landcare committee members and members of the local Tyagarah Landcare Locality group volunteered on Saturday 12th March to plant suitable native tree species on the edge of the remnant to lessen the risk of weeds such as privet and lantana entering the remnant.

This remnant and the nearby Subtropical Coastal Floodplain Forest remnant were in danger of being lost due to heavy infestations of small leaved privet and exotic vines such as coastal morning glory which prevent regeneration of native species and crowd out existing native vegetation. Brunswick Valley Landcare came to the rescue with funding received through the Australian Government's National Landcare Programme 25th Anniversary Landcare Grant. Experienced bush regenerators working on the site over the past year have removed the small leaved privet and other weed species allowing native species to regenerate. It is inspiring to see native ground covers and emerging native seedlings appearing on the site.

Participants in the workshop were shown weed control techniques, including use of a 'tree popper' as a chemical-free method of removing woody weeds. George Roberts, site manager and experienced bush regenerator, also demonstrated chemical injection techniques used to kill camphor laurel trees.



Volunteers planting trees at Tyagarah Crown Lands



George Roberts demonstrating use of a 'tree popper' as a chemical-free way to remove woody weeds

This planting and weed control training day provided an opportunity for a partnership between Brunswick Valley Landcare and Koala Connections Project who donated the tree guards and stakes.

For more information on the project, contact Bela Allen Email: bela_allen@yahoo.com

This project is supported by Brunswick Valley Landcare through funding from the Australian Government's National Landcare Programme.



FUNDING

Do you have a great project and need funds to make it happen?

You can find more information on available grants on the Brunswick Valley Landcare website including a calendar of all grants expected to be available during 2016. There are also some handy tips on how to be successful with grant applications. Below is a summary of grants which are currently accepting applications and ones that are anticipated to open within the next month.

<http://brunswickvalleylandcare.org.au/funding/>

Norman Wettenhal Foundation Small Grants

The Small Environmental Grant Scheme will provide support for groups or individuals undertaking biodiversity conservation projects in Australia. We are looking for projects that are about one or more of the following:



- monitoring, recording and sharing data
- delivering community education
- providing community capacity building (training)
- research and science

The next round is open. Grants close when they have received enough applications.

<http://nwf.org.au/grants/small-environmental-grants/>

Suitable for environmental projects under \$10,000

Landcare Australia Support Grants 2016

The Landcare Australia Support Grants 2016 are intended to help Landcare groups fund projects and activities which will improve the health of the environment in their local area. Groups are invited to apply for a grant of up to \$1,000 (GST exclusive). A total of \$50,000 is available on a competitive basis. Applications close on the **28th April 2016**.



<http://www.landcareonline.com.au/Landcare-Australia-Support-Grants-2016>

Suitable for help to groups who need a small amount of funding

Landcare Australia Special Projects Grants 2016

Landcare Australia is offering grants to Landcare and farming groups to undertake projects that protect environmental assets, address priority issues and improve the health of the environment.



Groups are invited to apply for a grant of up to \$15,000 (ex. GST) to support projects that focus on one or more of the following areas:

- Biodiversity and threatened species; and
- Sustainable Agriculture.

For more information go to the [Landcare Australia Communities Portal](#) and click on the 'Grants' tab.

Applications open on Monday 18 April and close on Friday 20 May 5.00pm EST

SUEZ Community Grants

The SUEZ Community grants program is now open. The program will provide grants of up to \$15,000 to community groups that encourage local participation in social and environmental projects to help create a more sustainable future.



Grant applications close on Monday **16th May 2016** at 5pm AEST

<http://suezcommunitygrants.com.au/>

Suitable for environmental projects under \$15,000

Funding Grants for Women in Agriculture



Women & Leadership Australia is administering a national initiative to support the development of female leaders across the agriculture sector. Senior Management and Executive level Women Leaders can apply for \$12,000 Individual Grants to undertake the Advanced Leadership Program. Women Managers can apply for \$5,000 Individual Grants to undertake the Accelerated Leadership Performance Program.

<http://agex.org.au/funding-grants-for-women-in-agriculture/>

Suitable for women working in or studying agriculture

AMP Tomorrow Fund Grants



AMP is giving amazing Australians doing great things the chance to share \$1 million in grants. Individuals of all ages, walks of life, interests and abilities who are working towards a goal that will have a positive impact

AMP Tomorrow Fund grants will be awarded for a diverse range of activities. The money could be used for training and travel costs associated with competing in a sport, study assistance while you work on research or small business funding for an innovative idea. Applications close 4pm (AEST) on **18th May**.

<https://www.ampstomorrowfund.com.au/>

Suitable for individuals who need help to pursue project that will have a positive impact on their community

The Awesome Foundation



The Awesome Foundation is a global community advancing the interest of awesome in the universe, \$1000 at a time. Each fully autonomous chapter supports awesome projects through micro-grants, usually given out monthly. These micro-grants, \$1000 or the local equivalent, come out of pockets of the chapter's "trustees" and are given on a no-strings-attached basis to people and groups working on awesome projects. Every chapter interprets "awesome" for itself. As such, awesome projects include initiatives in a wide range of areas including arts, technology, community development, and more. Browse some grants on the chapter pages of this site to see what we mean! <http://www.awesomefoundation.org/en>

Suitable for individuals with an awesome idea who needs seed funding

The Pollination Project



The Pollination Project seeks to unleash **GOODNESS** and expand **COMPASSION** all over the world. We make daily seed grants to inspiring social change-makers who are committed to a world that works for all. Through a global network of grantees and community partners, we identify extraordinary grassroots leaders who would not likely qualify for funding from other foundations or institutions. Our grantees have gone on to win prestigious international awards, secure large government and foundation grants, and secure national and international media attention.

<https://thepollinationproject.org/>

Suitable for individuals with an awesome idea who needs seed funding

Grants that are opening soon

Green Army Round Five

Round Five of the Green Army Programme opens soon and seeks to maximise positive environmental and heritage impacts through the use of multiple Green Army teams over a two to three year period. <http://www.environment.gov.au/land/green-army/projects/round-5> Suitable for projects that require a team of 10 people for 6 months



Protecting our Places grants

The aim of the Protecting our Places program is to protect land that is culturally significant to Aboriginal people and to support education projects about the environment and its importance in Aboriginal life.



It is envisaged that the next call for applications will be in late 2015/early 2016. Keep an eye on the page below for updates regarding this years grants. <http://www.environment.nsw.gov.au/grants/pop.htm>

Suitable for Aboriginal projects

Eco Schools grants

The next round Eco Schools Grants Program is expected to open in April 2016. The Eco Schools Grant Program aims to provide learning opportunities for students, teachers and the school community, through hands-on curriculum-based environmental projects that focus on strong student participation.

The program will fund school environmental management projects aimed at one or more of the following objectives: Environmental benefits, student participation, teacher engagement and managing for sustainability in school and the community. The ultimate goal of the Eco Schools Grant Program is the development of environmentally sustainable schools.

<http://www.environment.nsw.gov.au/grants/schools.htm>

Suitable for schools doing environmental projects

Coles Junior Landcare Garden Grants

Coles Junior Landcare Garden Grants give \$1,000 to schools and youth groups to help create gardens in their grounds or community, such as bush tucker gardens, water wise gardens or veggie gardens. These programs encourage students to learn about the environment through “outdoor learning” and interaction in developing their own school gardens. All schools, kindergartens, daycare centres, and youth groups (e.g. Scouts) are eligible to apply for a Coles Junior Landcare Garden grant. Last year round one opened in February so keep an eye on the website for further info. <http://www.juniorlandcare.com.au/grants-2/coles-grant>



Suitable for schools and preschools

The Blue Star Sustainability Awards

The Blue Star Sustainability Awards are Keep NSW Beautiful's sustainability awards program. Through the Blue Stars we recognise and celebrate the hard work of NSW citizens who promote responsible environmental management in their local area.



There are nine different award categories, each with a regional and a metropolitan winner.

- Hey Tosser – Litter Action Award
- Waste Less, Recycle More
- Cultural Heritage Award
- Going Green Education Award
- Habitat & Wildlife Guardianship Award
- Sustainable Systems Award
- Environmental Achievement Award
- Young Environmental achievement Award

Community Environmental Achievement Award

Entries close on 27th May 2016. Click on [Registration / Login](#) to begin.

<http://www.e-award.com.au/2016/bluestar/index.php?page=login>

Exhibition of the Draft Byron Shire Rural Land Use Strategy



Council resolved on 17 March 2016 to exhibit a Draft Rural Land Use Strategy for public comment. The draft Strategy and supporting information will be on exhibition from **Thursday 7 April to Friday 20 May 2016** and can be viewed on Council's website at <http://yoursaybyronshire.com.au/draft-byron-rural-land-use-strategy>.

The draft Strategy provides a 20 year strategic framework to guide future land zoning and use, protection and or development of our rural land. A community forum will be held on the 27 April 2016 - please register if you wish to attend. Council's planners will be out and about at farmers markets and local rural villages during exhibition – see details on Council's website.

Have your say by making a submission by email to submissions@byron.nsw.gov.au.

Draft Coastal Zone Management Plan for the Byron Bay Embayment



The draft Coastal Zone Management Plan for the Byron Bay Embayment (draft CZMP BBE) will be presented to a Council meeting on 12 May, 2016. Byron Shire Council decided yesterday to prepare the draft plan based on the following actions:

- adaptive seawall with walkway at Belongil Beach
- upgrade and removal of the spur groynes at the Jonson Street protection works
- update coastal hazard land use and planning controls
- dune revegetation and soft dune stabilisation
- emergency action sub plan
- coastal hazard investigation of Lighthouse Road, Captain Cook car park and Marine Parade Wategos Beach
- monitor coastal processes and impacts on North Beach.

Council's sustainable environment and economy director, Shannon Burt, said what was presented to Council yesterday was not the completed draft CZMP BBE.

"The purpose of the report was to note the final Coastal Hazard Management Study Byron Bay Embayment and to consider the management strategies to be featured within the draft CZMP BBE. The draft, but incomplete CZMP BBE, was also tabled for noting as per Council resolution.

"The CZMP process and the development of supporting investigations have required an extensive body of work which is now nearing completion and readiness to present to the community.

"Following the May report we encourage residents to review the draft CZMP BBE, assuming Council decides to put it on public exhibition at this time." she said.

A consultation strategy will accompany the public exhibition, and staff will be out and about, explaining the overall strategy and encouraging the community to provide feedback.

To read more on the draft Coastal Zone Management Plan Byron Bay Embayment go to: <http://www.byron.nsw.gov.au/publications/development-of-the-2015-coastal-zone-management-plan-for-byron-bay-embayment-draft>

Pest Animal Management

The Natural Resources Commission (the Commission) is undertaking a review of pest animal management in NSW. The draft report will be available for public comment for six weeks. We thank you for your contribution to the review, and encourage you to make a submission and share the draft report throughout your networks. To view the draft report and/or to make a submission by 18th May.

<http://www.nrc.nsw.gov.au/pest-animal-management>



Biosecurity Act

A third round of delegated legislation under the new Biosecurity Act has been released for public comment until 17 May 2016. More details [[here](#)]



Australian Government
Department of Agriculture
and Water Resources

Biodiversity Legislation Review

The NSW Government is considering the recommendations of an Independent Expert Review Panel of biodiversity laws which delivered its final report to the Minister for the Environment in December 2014. It appears the Government is planning on major changes to biodiversity protection. The Draft Legislation is due for release for public submissions very soon. Landcare NSW has secured funding to run information sessions on the draft and its ramifications, with representatives from NSW EDO, Nature Conservation Council, NSW Farmers and other interested groups. A session will be held in Grafton at a date to be notified. We'll keep you posted. Another workshop run by the EDO will also be held in the Tweed once the draft is released.

Meanwhile you can find out more at the EDO www.edonsw.org.au/biodiversity_legislation_review

or sign this petition from the Nature Conservation Council and other environment groups at

http://www.standupfornature.org.au/petition?recruiter_id=108171

New online platform for environmental projects

Working together for better environmental outcomes

There's a lot of great things happening in the environment and sustainability space. Right here in our own backyard, we're a hub for good news stories. But more widely across Australia, it can be hard to find what you need to support great projects and even better environmental outcomes.

At EnviroSource we've been developing a new online community designed to connect and inform environmental change agents.

EnviroSource is all about helping people to find what they need to make a real difference. For the first time on one website, there's a national approach that showcases all environmental projects. It's also a platform where you can find knowledge sharing forums and articles as well as environmental jobs, tenders, awards, grants and even events.

EnviroSource launched in January 2016 and there's already over 150 members from across Government, Not for Profits and the business community. Show your support by getting on board as a free member. For further info, please go to www.envirosource.com.au.





Know your noxious weeds

Durable. Drought tolerant. Vigorous. Adaptable. The newest must-have garden plant? No ... weeds. The same qualities we look for in great plants for our gardens are also the characteristics that make weeds so successful in colonising new areas. Some of these weeds pose a significant threat and might be designated as "noxious".

"Noxious weed" is a legal designation used to describe plant species that are non-native and have the potential to cause environmental or economic damage by harming native plant communities, crops or livestock.

Weeds on the Far North Coast noxious weed list carry class designations from 1 to 5 and are regulated under the *Noxious Weeds Act 1993*. As of February 2014 this list has been updated. To view the new noxious weed list for the Far North Coast of NSW, go to <http://fncw.nsw.gov.au/wp-content/uploads/Noxious-weed-list-by-control-class.pdf>

Some noxious weeds are commonly found in gardens. Many of these plants were introduced by new settlers who brought the plants with them from their native countries for either forage for livestock, aesthetic or medicinal use. Some examples are Lantana and Privet, which have been found as hedges or under older trees in gardens. Green Cestrum, Broad-leaf pepper tree and Chinese celtis are rarely planted, but are common in residential areas due to birds dispersing the seeds.

Once these plants arrive, they quickly establish and spread aggressively, out-competing the surrounding vegetation and damaging natural and agricultural ecosystems. They thrive in their new environments as they lack the insects, diseases and animals that would normally control the plants in their native habitats.

Identifying and stopping the spread of noxious weeds are important first steps in keeping them in check. When controlling these weeds, use a variety of methods, such as hand pulling, making the environment less conducive to the establishment of plants, and using chemical controls. Remove plants while they are small and easily controlled, and before they go to seed. Some, such as myrtle spurge, can cause severe skin irritation, so wear gloves. When buying seed mixes or plants from mail-order companies, check first to make sure they are not on the Far North Coast Weeds' noxious weed list.

It is up to us as gardeners to keep a sharp eye out for these noxious weeds and eradicate them from our gardens if they appear. For more information on which plants are declared noxious weeds, call Far North Coast Weeds on 6623 3847 or go to the website: www.fncw.nsw.gov.au and look at the new noxious weed list.

Further media enquires: Kim Curtis, Extension Officer, 6623 3833 or 0427 335 502.

Weed of the Month

This month's weed of the month is the Golden Rain Tree *Koelreuteria elegans subsp. formosana*. Also known as Chinese flame tree, Chinese rain tree, flame gold, and flame golden rain tree it is an extremely fast growing medium-sized tree usually growing to 5-12 m tall but capable of reaching up to 25 m in height.

We have owned our property for 3 years and have cut 100's of these trees down. I have found the seed to have a very high germination rate. I estimate 90% of seeds germinate, some in the cracks in our concrete driveway. Given the large amount of seeds that these trees produce and that a 2 year old tree can be 5m tall and producing seeds, I feel that this tree is one to watch out for. I have heard that it is spreading into rural areas. On a positive note from all the trees that we have cut down I made a great woven fence to screen us from our neighbours!



Its main trunk is covered in rough greyish-brown bark. Its twice-compound leaves are very large (25-60 cm long and 15-44 cm wide) and have numerous leaflets (5.5-10 cm long). Its large branched flower clusters are 30-50 cm long and are borne at the tips of the branches in late summer. Its bright yellow flowers usually have four or five yellow petals and the same number of stamens. Its three-sided papery capsules form in early Autumn and turn from bright red to pink and then eventually brown as they mature.

A native of Taiwan it is not on the Byron Shire Council's list of weeds however it is starting to populate large areas of our suburban areas. It is locally naturalised in south-eastern Queensland (e.g. around Brisbane and near Noosa) and in the coastal districts of north-eastern New South Wales (e.g. near Lismore). Also naturalised in south-eastern USA (i.e. Texas, Louisiana, Mississippi and Florida) and on some Pacific islands (i.e. Hawaii and Guam).



A potential weed of roadsides, disturbed sites, waste areas, parks, urban bushland, riparian vegetation, gullies, forest margins and open woodlands in the sub-tropical, tropical and warmer temperate regions of Australia.

All information taken from <http://weeds.brisbane.qld.gov.au/weeds/golden-rain-tree>

For more information on how to control these weeds and other weeds in the shire please visit the Byron Shire Council website and you will find weed profile sheets: <http://www.byron.nsw.gov.au/weed-profiles>



WORKING BEES - why not get out and get involved in one of our local groups?

For all Landcare Working Bees please wear protective clothing - long pants, long-sleeved shirt, closed-in shoes, hat, gloves and bring water, sunscreen, and insect repellent. **Please always contact the groups co-ordinators before attending a working bee as plans do change!**

Brunswick Heads Dunecare

WHEN: 4th Sunday of the month 8:00am – 11:00am
WHERE: Meet between the rock wall and the surf club
CONTACT: Jordan Moore brunswickheadsdunecare@gmail.com 0413 962 468 txt mess pls

East Yallakool Landcare, Ocean Shores

WHEN: each Wednesday 8:00am – 11:00 am
WHERE: Inderwong Avenue, Ocean Shores (adjacent to the footbridge)
CONTACT: David Kemp dnkemp77@gmail.com 0427 650 861

Green and Clean Awareness Team, Byron Bay

WHEN: 3rd Sunday of the month 9:00am
WHERE: Meet Main Beach, Byron Bay
CONTACT: Veda Turner vedaturner@gmail.com 0427 857 991

Heritage Park Landcare, Mullumbimby

WHEN: alternate Saturdays 9:00am – 11:00 am
WHERE: Heritage Park, Mullumbimby
CONTACT: Diana Hughes bromspot@gmail.com

Jinangong Landcare, Ocean Shores

WHEN: 1st Sunday of the month
WHERE: The Tunnel Road, Ocean Shores
CONTACT: Ian Parer ianparer@hotmail.com

Lower Mullum Creek Landcare, Mullumbimby

WHEN: 2nd Sunday of the month
WHERE: Azalea Street Bridge to Riverside Bridge, Mullumbimby
CONTACT: Annie Mullen 0478 517 625 anne@jbailey.info

South New Brighton Dunecare

WHEN: 1st Friday of the month 1:30pm - 4:30pm
WHERE: Meet at southern end of the Esplanade at the Strand beach access point.
CONTACT: Robyn Bolden robyn.bolden@australis.net 6680 1970

Suffolk Park Dunecare

WHEN: 1st Saturday of the month
CONTACT: Helen Brown hellyh@bigpond.com 6685 4964

Tyagarah Landcare

WHEN: Each Thursday 9:00am – 11:00am
WHERE: 23 Prestons Lane, Tyagarah
CONTACT: Bela Allen bela_allen@yahoo.com 6684 7113

LINKS

- Arakwal <http://arakwal.com.au/>
 - Border Rangers Alliance <http://www.greateasternranges.org.au/border-ranges/overview/overview>
 - Bangalow River and Landcare <http://www.bangalowlandcare.org.au/>
 - Big Scrub Landcare <https://www.bigscrubrainforest.org.au/>
 - Brunswick Valley Landcare <http://www.brunswickvalleylandcare.org.au/>
 - Byron Bird Buddies <http://www.byronbirdbuddies.com.au/>
 - Byron Community College <http://www.byroncollege.org.au/>
 - Byron Shire Council <http://www.byron.nsw.gov.au/>
 - EnviTE www.envite.org.au
 - Environmental Trust <http://www.environment.nsw.gov.au/grants/envtrust.htm>
 - Ewingsdale Locality Group (BVL) <http://ewingsdale.org.au/#/landcare/4532495308>
 - Far North Coast Weeds <http://fncw.nsw.gov.au/>
 - Friends of the Koala www.friendsofthekoala.org
 - North Coast Local Land Services <http://northcoast.lls.nsw.gov.au/>
 - Northern Landcare Support Services <http://www.nlss.com.au/>
 - Mullumbimby Community Gardens <http://mullumcommunitygarden.wordpress.com/>
 - North Coast nature <http://www.northcoastnature.org.au/>
 - Richmond Landcare Inc. <http://www.richmondlandcare.org/>
 - Soilcare <http://www.soilcare.org>
 - Suffolk Park Locality Group (BVL) www.landcare.nsw.gov.au/groups/suffolk-park-dunecare-group
 - Tweed Landcare Inc. <http://www.tweedlandcare.org.au/>
 - Wilson's Creek Huonbrook Landcare <http://wilsonscreeklandcare.mullum.com.au/>
 - Wetlandcare Australia <http://www.wetlandcare.com.au/index.php>
-

For information about Landcare or other natural resource issues in Byron shire
please contact

Landcare Community Support Officer

Alison Ratcliffe 66267028 (Tuesday and Wednesday)

email: alison.ratcliffe@byron.nsw.gov.au



This newsletter is funded by North Coast Local Land Services and supported by Byron Shire Council.



Local Land
Services

