




Newsletter for Landcare and Dunecare in Byron Shire

<http://www.brunswickvalleylandcare.org.au/>

 Connect on facebook

April 2018

Hayla the Ringtail Possums remarkable rescue by Lindsay Murray

Hayla is one truly remarkable dog who recently rescued an orphaned female baby possum. Hayla is a Maremma/Blue Heeler cross who works on a farm in Myocum, protecting the livestock from foxes, dogs and other predators.

'Hayla has never ceased to amaze her owner Lindsay with her work ethic and instinct to protect all farm animals particularly the young, sick and vulnerable,' said a WIRES (NSW Wildlife Information, Rescue and Education Service) spokesperson.

'She regularly checks on the turkeys nesting in the paddock and then is on hand to welcome the newborn chicks. She alerts the humans to any birds trapped or in distress. She identifies the cows ready to calve and then guards the calves. She will sit all day with an orphaned calf being fed in the yards, said he owner Lindsay.

This week, Hayla displayed a new level of care. Lindsay had found a dead female ringtail possum on their property two days earlier. Then, during the night, Hayla located the orphaned female baby possum, which we assume had been separated from her dying mum. Hayla managed to get the possum joey to attach to the fur on her back, keeping it warm, and then presenting it to Lindsay and his family at 6am the following morning.

The tiny (88g) possum is now in care with a WIRES volunteer. She will be buddied up with another ringtail currently in care, and they be released together as a little family when they are about 8 months old.

The little possum has been named Hayla in recognition of the wonderful work of her canine rescuer.

Contact WIRES for rescues, advice or enquiries. The 24-hour hotline is for all calls to [WIRES in the Northern Rivers](#) – 6628 1898.

Photo1: Hayla the orphaned possum.

Photo2: Hayla with Lindsay on the farm.



OUR KOALAS NEED KOALA WATCHERS

UNDERSTANDING AND MANAGING KOALA HABITAT

FREE KOALA WORKSHOP
AND FIELD DAY

Friday 15th June 2018

12 pm - 3 pm

Gondwana, Tyagarah



Come along and find out:

- How koalas use habitat across the landscape
- What trees and vegetation communities koalas use
- How koalas respond to drought, heatwaves, fires, and storms
- How climate change is and will affect koalas
- What you can do to help support a healthy koala population in your local community

Field Trip to enhance your koala watching skills and learn to identify signs of koalas and koala habitat

Refreshments provided. **BOOKINGS ESSENTIAL.** If you would like more information or to register for the workshop contact Maria Matthes, Koala Watch Project Officer, on 0467 855 990 or maria@healinghistory.com.au or Friends of the Koala on 6621 4664 or Bela Allen, Brunswick Valley Landcare bela@bvlandcare.com



This Project has been assisted by the New South Wales Government through its Environmental Trust.



AUSTRALIA NEW ZEALAND BIOCHAR CONFERENCE 2018 ANZBC18

BUILDING VIABLE BIOCHAR INDUSTRIES

AGRICULTURE, BIOENERGY, BUILDING, MINERALS & METALS PROCESSING,
WASTE MANAGEMENT, WATER FILTRATION AND ENVIRONMENTAL MANAGEMENT.

14-16 AUGUST 2018
SOUTHERN CROSS UNIVERSITY,
GOLD COAST CAMPUS, BILINGA, QLD



www.anzbc.org.au  

Proudly Sponsored By





Photos by Queensland Biosecurity and NSW DPI

Help us improve biological control for weeds on the North Coast by completing this 10 – 15 minute survey:

https://www.surveymonkey.com/r/North_Coast_Weed_biocontrol_March_2018

The NSW Department of Primary Industry is conducting this survey to help guide biocontrol projects for weeds on the North Coast. If you have any questions please contact Wendy Gibney Email: wendy.gibney@dpi.nsw.gov.au

2018 NSW Vertebrate Pest Management Symposium

People, Planning and Practice

16-18 October 2018,

Opal Cove Resort, Coffs Harbour, NSW



The 2018 NSW Vertebrate Pest Management Symposium is being hosted by North Coast Local Land Services and will be held in Coffs Harbour, NSW, from the 16th - 18th October 2018.

Delegate registration opens in April 2018. The program will be available on the conference website soon

[Visit the conference website](#)

DPI Discussion Papers

NSW DPI has released three discussion papers.

- [Management of cane toads](#)
- [Notification of certain non-native animal species](#)
- [Minimising risks from pigs and ruminants consuming meat and other animal products](#)

Your input into this important process is valued and you are encouraged to complete the following surveys:

- [The management of cane toads in NSW](#)- NSW DPI proposes to manage the risks posed by cane toads with the general biosecurity duty and regulations to establish a biosecurity zone.
- [Notification of certain non-native animal species](#)- NSW DPI is now proposing amendments to the Act which improve the management of these animals by requiring notification when a species listed as a prohibited dealing is encountered in NSW.
- [Minimising the biosecurity risk from pigs and ruminants consuming meat and other animal products in NSW](#)- NSW DPI is proposing to amend the Biosecurity Regulation 2017) to prohibit feeding or access by pigs and ruminants to any material or substance containing mammal products

More information please visit www.dpi.nsw.gov.au/biosecurityact



SAVE THE DATE

**2018
National Landcare
Conference and Awards**

**10 - 12 October
Brisbane Convention
and Exhibition Centre**

This project is supported by Landcare Australia, through funding from the Australian Government's National Landcare Programme.



[20-April-2018.pdf](#)

The April issue of Village Eco News is now available. There's a great article on plants you might not know are weeds.

[http://brunswickvalleylandcare.org.au/wp-content/uploads/2016/06/Village-Eco-News-Issue-](http://brunswickvalleylandcare.org.au/wp-content/uploads/2016/06/Village-Eco-News-Issue-20-April-2018.pdf)

Brunswick Valley Landcare office days

Alison is away in England returning on Monday 14th May. I will be checking and replying to emails during this time but please bare in mind that replies to any emails may be delayed during this time. If it can't wait until I'm back you can find the emails of BVL committee members on the website. Many thanks for your patience.

Request for contractors to register with BVL

Brunswick Valley Landcare is putting out a call for local bush regeneration contractors to register with them. We need local experienced and qualified contractors to work on our projects. Registration forms are available to download from the website. <http://brunswickvalleylandcare.org.au/contractors/>

Looking for Volunteers to run a stall at Old and Gold

BVL has been asked to participate in this years Old and Gold. We are putting the call out to our locality groups and volunteers to see if there is anyone who would like to run a stall under the BVL banner? It will be a great opportunity to promote local landcare work and possibly recruit some new members. BVL will supply the tent, tables, brochures etc. If interested please contact

brunswickvalleylandcare@gmail.com



Photos: Large-billed Scrubwren, Logrunner, Little Shrike-thrush by Bruce Mcnaughton

BBB Program Update for April 2018

For full program and more information download the PDF from our Facebook page or BBB website www.byronbirdbuddies.com.au

What To Bring - Always wear covered shoes and bring water, hat, sunscreen and insect repellent. Except for presentation days, always bring something to eat for morning or afternoon tea and lunch if it's over the lunch period. For presentation days bring a plate to share for morning or afternoon tea

Contact - for all BBB & BVBW Activities - Jan -02 66803279 or Mobile 0428864378
byronbirdbuddy@gmail.com

Note: For surveys, experience is not necessary. Beginners are welcomed at all outings which will provide an opportunity to learn about our birds and their habitat.

- **Tuesday 10th - Byron Scouts Group - Byron Wetlands – any one who would like to assist with this activity please contact me – 0402864378 Time – 18.00 – 20.00**

- **Saturday 14th - Mt Jerusalem NP – Mill Rd and Koonyum Range off Wilsons Creek – Huonbrook Rds**

Why – Surveying for the all birds, but particularly for the Albert's Lyrebird, Paradise Riflebird, Pale-yellow Robin, Logrunner, Green Catbird & Regent Bowerbird

Time – 8am and an all day event – But you can leave at any time

Meet – the first part of the survey will commence from the corner of Huonbrook and Mill Rd and then on the Koonyum Range Rd after lunch . – These roads are narrow and rough so it is best to car pool. We can meet at the Wilsons Creek School on Wilsons Creek Rd 8am – which is about 14.5km from Coolamon Scenic Drive. Please let me know if you intend coming

Other Northern River Bird-watching Groups – Outing dates

BirdLife Northern Rivers (BLNR) tweedbirds@bigpond.com

Sunday, April 8th, Cobaki Broadwater Retirement Village, Tweed Heads West

Time - 7:30 am NSW - Ending time is variable often by noon

Where - Cobaki Broadwater Retirement Village - located at 192 Piggabeen Road, Tweed Heads West
From the South, take the Kennedy Drive/Tweed Heads exit from the M1, turn LEFT onto Kennedy Drive, across Cobaki Creek and immediately turn HARD RIGHT at the end of the bridge into Piggabeen Road. Keep left on Piggabeen Road, past the Kingdom Hall of Jehovah's Witnesses (at no. 153 on the left) and the road then becomes divided – move into RIGHT turning lane (opp no. 187) and turn across Piggabeen Road into Cobaki Retirement Village & park inside the Village area.

Check out the website for details <http://www.birdlife.org.au/events/detail/birdlife-northern-rivers-outing40/birdlife-northern-nsw/> or Anne Jones at 0418 244 262 jones.oz@gmail.com

Brunswick Valley Bird Watchers (BVBW) – Wednesday 11th and the 25th

Wednesday 11th (Pottsville Environmental Park. 8 am. Meet around the corner of Centennial Drive and the Bowling Club.) & Wednesday 25th - to be advised - Contact byronbirdbuddy@gmail.com for details

STORIES to inspire and give you hope

Land for Wildlife

Ant Art by Bela Allen



Bela Allen took this photo of a jumping ants nest.

The photo was taken in bushland at Tyagarah, April 2018.

Jumping ants *Myrmecia pilosula* were observed carrying flowers of the Golden Rain tree back to their nest. These ants prey on insects such as cockroaches and crickets.

However, mature adult ants of this species mostly eat sweet substances collected while foraging and the dead insects are given to their larvae.

Biodiversity Conservation Trust funding for private land conservation

The NSW Government has committed \$37 million for the opening programs from the new [NSW Biodiversity Conservation Trust](#) (BCT).

Though details have yet to be announced, it is apparent that in the coming two months the BCT will call for up to \$16 million in tenders from interested landholders to participate in the Conservation Management Program. There will also be tenders invited for up to \$2 million to protect priority koala habitat, and \$2 million for fixed rate offers for conservation agreements in high priority investment areas and \$2 million for Conservation Partners Grants.

What this means, is that now is the time to get planning on your projects for koala habitat restoration, private land conservation activities, signing or working on conservation agreements. More info will be available soon, so for now you should get those shelf projects prepped as much as you can, it'll pay off when the grants are announced.

The BCT has released its [Business Plan](#) and has committed to offering a further \$60 million to programs in 2018-19. The Office of Environment and Heritage has released the [Biodiversity Conservation Investment Strategy](#), which guides the BCT's investment. These documents would be worth reading to help you better target your project to the funding priorities of the BCT's upcoming grant rounds.

[Get the full media release here.](#)

BCT will continue to offer Conservation Agreements and Wildlife refuges through our Conservation Partners Program. See https://www.bct.nsw.gov.au/sites/default/files/2018-03/Factsheet_ConservationPartnersPrograms.pdf

Landholders can also look into setting up a Biodiversity Stewardship Agreement (BSA) which will generate biodiversity credits which can be traded as part of the NSW Biodiversity Offset Scheme. See <https://www.bct.nsw.gov.au/types-of-agreements>

FUNDING

Do you have a great project and need funds to make it happen?

You can find more information on available grants on the Brunswick Valley Landcare website including a calendar of all grants expected to be available during 2018. There are also some handy tips on how to be successful with grant applications. Below is a summary of grants which are currently accepting applications and ones that are anticipated to open within the next month.

<http://brunswickvalleylandcare.org.au/funding/>

Wettenhall Environment Trust Small Grants Scheme



The Small Environmental Grant Scheme provides support for people undertaking projects that will make a positive difference to the natural living environment, in land, sea or air, rural or urban. There are only opening dates, no closing dates - they close the round when satisfied that there are a suitable number and spread of applications. So it's best to get in as soon as you can when the round opens.

19th June 2018 (funding in August 2018), 18th September (funding in November 2018), 11th December 2018 (Funding in February 2019) [Find out more or apply here.](#)

Churchill Fellowships

A Churchill Fellowship can offer Australian citizens an opportunity to travel overseas to investigate a topic or an issue that they might be passionate about. Applications close 27th April 2018.

2018. <https://www.churchilltrust.com.au/>

Weed of the Month

Is having a break as this month is a reduced newsletter due to Alison being overseas.

Unfortunately the new Byron Shire Council website will not include the weed information sheets. You can however find more information and other weed info on the Department of Primary Industries website

<http://weeds.dpi.nsw.gov.au/>

Or you can download their weed wise APP onto your phone or tablet. NSW WeedWise presents information for over 300 noxious and environmental weeds in NSW, including Profiles, Control (including herbicide options).

<http://www.dpi.nsw.gov.au/images/topic-images/biosecurity/weeds2/images/wid-documents/weed-wise-spotlight>



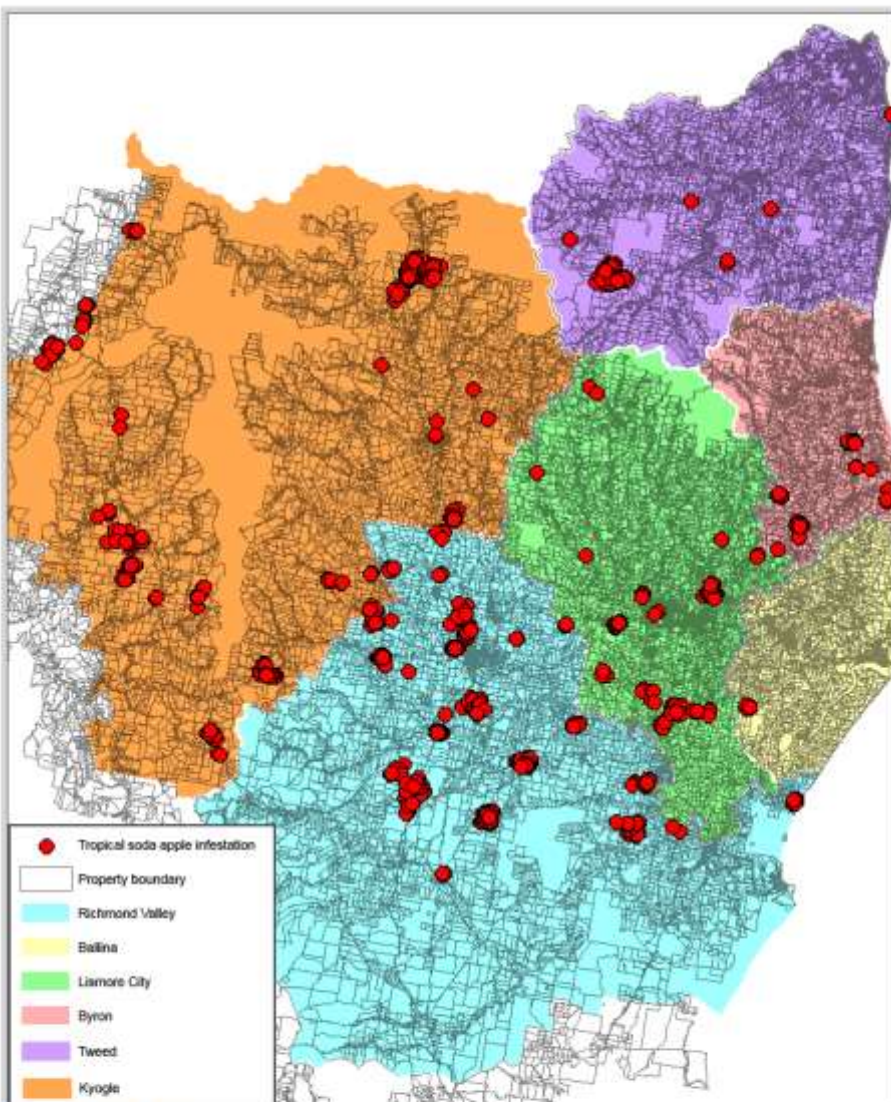
There is also another good free APP – Suburban and Environmental Weeds of South East Queensland. SE QLD shares many of the same weeds as us.

https://play.google.com/store/apps/details?id=com.lucidcentral.mobile.sew_full&hl=en

Tropical Soda Apple (TSA) was first discovered in our region in 2012. This initial infestation was approximately five hectares spread over three paddocks at a property near Casino.

Since then, despite investing significant time and resources inspecting properties, mapping infestations, educating the public and ensuring treatment of known infestations, we find ourselves in 2018 with 234 properties infested, covering 1,963 ha over 15,148 ha of land.

Following the release of a ministerial control order in 2015 stricter measures have been imposed on all owners or occupiers of land. All TSA plants are to be destroyed, including fruit. Owners or occupiers are to ensure subsequent generations of TSA are destroyed and that the land is kept free of the weed. Notification to the Local Control Authority of the presence of any new infestations of TSA is to occur.



Due to the high numbers of new infestations, Council is now focussing on tracking the potential movement of TSA infested cattle off properties with known infestations. Now is the time for action to help reduce the spread and assist Council in its drive towards eradication.

- Learn to identify TSA correctly
- If you are selling cattle be aware that there are heavy fines imposed for knowingly spreading TSA.
- New stock should be held in a TSA free holding area for 6 days to allow seeds to pass through the gut.
- You have an obligation to eradicate and notify your Local Control Authority.
- Return every 4 weeks to check for seedlings.
- Treat plants as you find them before they seed.

If you have never had TSA on your property and suspect you may have it please contact Rous County Council on 66233833.

<p>Tropical soda apple ROUS COUNTY COUNCIL</p> <p><small>THE INFORMATION ON THIS MAP MAY NOT BE ACCURATE. Disclaimer: While all reasonable care has been taken to ensure the information contained on this map is up to date and accurate, we warrant only to the extent that the information contained on this map is free from material errors. Any reliance placed on such information is done at the user's risk. The user shall remain liable for the information shown on this map. The Rous County Council is not responsible for any loss or damage caused by reliance on the information shown on this map.</small></p>		<p>ROUS COUNTY COUNCIL ADMINISTRATION CENTRE Level 4, 215/222 Macleay Street LISMORE NSW 2480 Ph: (02) 6623 3833 Fax: (02) 6622 1191 Email: council@rouscouncil.nsw.gov.au Web: www.rouscouncil.nsw.gov.au</p>	
<p>Printed Date: 05/03/2018 Prepared By: HP Approved By: PC Projection: MGA Zone 56</p>			

WORKING BEES - why not get out and get involved in one of our local groups?

For all Landcare Working Bees please wear protective clothing - long pants, long-sleeved shirt, closed-in shoes, hat, gloves and bring water, sunscreen, and insect repellent. **Please always contact the groups co-ordinators before attending a working bee as plans do change!**

Brunswick Heads Dunecare

WHEN: 4th Sunday of the month 8:00am – 11:00am
WHERE: Meet in North Beach Car Park
CONTACT: Jordan Moore brunswickheadsdunecare@gmail.com 0413 962 468 txt mess pls

Yallakool Reserve Landcare, Ocean Shores

WHEN: each Friday at 8.30 am
WHERE: corner of Yallakool Drive and Warrambool Road, Ocean Shores
CONTACT: Felicity Watson 0467 650 140
or David Kemp dnkemp77@gmail.com 0427 650 861

Green and Clean Awareness Team, Byron Bay

WHEN: 3rd Sunday of the month 9:00am
WHERE: Meet Main Beach, Byron Bay
CONTACT: Veda Turner vedaturner@gmail.com 0427 857 991

Heritage Park Landcare, Mullumbimby

WHEN: alternate Saturdays 9:00am – 11:00 am
WHERE: Heritage Park, Mullumbimby
CONTACT: Diana Hughes bromspot@gmail.com

Jinangong Landcare, Ocean Shores

WHEN: 1st Sunday of the month
WHERE: The Tunnel Road, Ocean Shores
CONTACT: Ian Parer ianparer@hotmail.com

Lower Mullum Creek Landcare, Mullumbimby

WHEN: 2nd Sunday of the month
WHERE: find out from Rita de Heer
CONTACT: Rita de Heer 02 6684 1495 rdeheer1@bigpond.com

South New Brighton Dunecare

WHEN: 1st Friday of the month 1:30pm - 4:30pm
WHERE: Meet at southern end of the Esplanade at the Strand beach access point.
CONTACT: Robyn Bolden robyn.bolden@australis.net 6680 1970

Suffolk Park Dunecare

WHEN: 1st Saturday of the month
CONTACT: Helen Brown hellyh@bigpond.com 6685 4964

Tyagarah Landcare

WHEN: Each Thursday 9:00am – 11:00am
WHERE: 23 Prestons Lane, Tyagarah
CONTACT: Bela Allen bela_allen@yahoo.com 6684 7113

LINKS

- Arakwal <http://arakwal.com.au/>
- Border Rangers Alliance <http://www.greasternranges.org.au/border-ranges/overview/overview>
- Bangalow River and Landcare <http://www.bangalowlandcare.org.au/>
- Big Scrub Landcare <https://www.bigscrubrainforest.org.au/>
- Brunswick Valley Landcare <http://www.brunswickvalleylandcare.org.au/>
- Byron Bird Buddies <http://www.byronbirdbuddies.com.au/>
- Byron Community College <http://www.byroncollege.org.au/>
- Byron Shire Council <http://www.byron.nsw.gov.au/>
- EnviTE www.envite.org.au
- Environmental Trust <http://www.environment.nsw.gov.au/grants/envitrust.htm>
- Friends of the Koala www.friendsofthekoala.org
- Local Land Services www.northcoast.ils.nsw.gov.au
- North Coast Local Land Services <http://northcoast.ils.nsw.gov.au/>
- Northern Landcare Support Services <http://www.nlss.com.au/>
- Mullumbimby Community Gardens <http://mullumcommunitygarden.wordpress.com/>
- North Coast nature <http://www.northcoastnature.org.au/>
- Richmond Landcare Inc. <http://www.richmondlandcare.org/>
- Rous County Council (formerly Far North Coast Weeds) <http://rous.nsw.gov.au/>
- Soilcare <http://www.soilcare.org>
- Suffolk Park Locality Group (BVL) www.landcare.nsw.gov.au/groups/suffolk-park-dunecare-group
- Tweed Landcare Inc. <http://www.tweedlandcare.org.au/>
- Wilson's Creek Huonbrook Landcare <http://www.wilsonscreeklandcare.mullum.com.au/>
- Wetlandcare Australia <http://www.wetlandcare.com.au/index.php>

For information about Landcare or other natural resource issues in Byron shire
please contact

Landcare Support Officer

Alison Ratcliffe 6626 7028 0421 244 640 (Monday, Thursday and Friday)

email: alison@brunswickvalleylandcare.org.au



This newsletter is funded through the Community Capacity Support program which is supported by North Coast Local Land Services, through funding from the National Landcare Programme and from the NSW Government's Catchment Action NSW and supported by Byron Shire Council.

