

## GREETINGS LANDCARERS

This month's edition is jam packed with enough information, stories and funding opportunities to get you through this crazy time.

We like to keep it positive and informative.

Check out this gorgeous beauty, smiling straight into the camera. The Hunk o Trunks have proven to be super popular with our Yellow Tailed Black Cockatoos. Let's hope their smaller, less common cousins, the Glossy Blacks love them as much.

During these strange times the Landcare wheel keeps turning; trees continue to be planted, biodiversity continues to be improved and flora and fauna continues to be nurtured and protected.

Look after yourselves and each other :-)



## **Congratulations Goonengerry and Wilsons Creek Landcare**

### **Wilsons Creek Huonbrook Landcare Inc secures \$155,863 Environmental Trust Grant for “Upper Wilsons and Coopers Creek Catchments: Restoring Rainforest in Times of Change”**

Over four years, exotic species will be controlled, and 31.8 hectares of native forest regenerated and enriched with plantings on 12 properties. Following 2019 drought and bushfires, we aim for long-term rainforest persistence in the refugial environment of our project area through worksite selection, genetic management and fire hazard removal.

The project will continue rainforest expansion and connection in the surrounds of Nightcap, Mount Jerusalem and Goonengerry National Parks, while also enhancing river connections between the headwaters and the coast.

WCHL has been working on similar projects for more than 25 years. We are now partnering with Rainforest4 Foundation, adding more tree planting and extra volunteer events to our bush regeneration and habitat restoration program. Welcome RF4!

Enquiries [wilsonscreeklndcare@yahoo.com.au](mailto:wilsonscreeklndcare@yahoo.com.au)

We'll have field days, plantings, bush regeneration demonstrations and property walks as soon as Covid restrictions allow.



## **Goonengerry Landcare Group Secures \$168,000 Grant “Restoration and Linkage of Wilsons and Coopers Creeks”**

Volunteer run Goonengerry Landcare Groups has secured a further \$168,000 in grants to improve, restore, and protect parts of the Byron Shire hinterland’s biodiversity values. The grant is part of the NSW Environmental Trust’s Restoration and Rehabilitation program and will run for four years starting in November 2021.

Goonengerry Landcare has had enormous success over decades of work with a multitude of grants and this project will continue their long-term environmental restoration and rehabilitation program, emphasising mitigation and adaptation to the impacts of climate change.

The purpose of the grant is to convert bushland dominated by lantana and camphor laurel to diverse Lowland Subtropical Rainforest, protect, enhance, expand mapped wildlife corridors, and improve in-stream water quality, thus creating habitat to support threatened species recovery. The grants include a series of workshops to engage and support the community in restoration projects.

Additionally, we will trial a partnership with tree planting NGO R4F on open lands next to our natural regeneration sites while also doubling our efforts to create nesting opportunities through the installation of nesting boxes on many of our sites after successful local trials.

For further information please contact:

Alan Goldstein – [goonengerrylandcare@gmail.com](mailto:goonengerrylandcare@gmail.com)

This project has been assisted by the New South Wales Government through its Environmental Trust.



## Broken Head Coastal Corridor Restoration by Annette McKinley

Broken Head Landcare are finalising their three year grant from NSW Environmental Trust "Broken Head Coastal Corridor Restoration".

The project includes eight property owners and has restored 40ha of native vegetation and planted 2 ha of creek line. 3,000 rainforest and swamp sclerophyll trees were planted and restoration works included weed control targeting Cherry Guava *Psidium cattleianum* and exotic grasses that are impeding natural regeneration

The eight landholders are committed to continuing conservation on their properties with 4 entering into Conservation Agreements etc.

The project held a final community event at Broken Head where 23 participants attended and planted 250 rainforest trees. Morning tea was held under the forest edge. A great time was had by all and much enthusiasm for the next stage of the rainforest planting.

Photo 1 Participants at the July planting day



# Signage for Environmental trust Mooibal Spur Project Tallowood Ridge

Part of the Mooibal Spur River to Ridge ET project, these two signs will be installed along the walking track and at the Gathering Tree in Tallowood Ridge Estate in early September.



## Gathering Tree

### Tallowood *Eucalyptus microcorys*

This tree is a Tallowood and is one of the favourite foods of Koalas. The abundant blossoms produce pollen and nectar for flying foxes, birds, marsupials and insects.

This remnant tree was once part of an old sclerophyll forest, with a lineage of possibly 50 million years.

We would like to thank Byron Shire Council and the dedicated local residents that have worked to save this remnant old growth Tallowood tree.

This majestic tree now forms the feature of this small pocket park for community use.

These beautiful, sentient elders should be respected and cherished.

We would like to acknowledge the Arakwal Bumberlin People of the Bundjalung Nation who are the Traditional Custodians of this land

We acknowledge their continuing living culture, connection to land, waters and community; we ask that you help look after and respect country.

We acknowledge and extend our respect to Elders both past and present and upcoming future leaders. They want everyone to respect, appreciate and value their Country. We invite you to stand with Arakwal to protect and support their values, understanding how they belong to Country, respecting and continuing to care for Country.

Traditions and cultural practices have been passed on from ancestors that are alive in their descendants today. With a strong connection to country, actively caring for and reconnecting people to this place. We share our knowledge and culture with the wider community to help look after Country.

When you walk this country take a moment to reflect on where you are, listen, look, smell, feel, stay open.

Respect.



This project has been assisted by the New South Wales Government through its Environmental Trust.



For more information on your local Landcare and ways to get involved visit [www.brunswickvalleylandcare.org.au](http://www.brunswickvalleylandcare.org.au)

# Mooibal Spur Walking Track



1 km / 30 mins return / some hills / rough track / no experience required

## History of the Walking Track

### Environmental Value

When you glance up the valley towards Wollumbin and Mt Jerusalem, the beautiful vista was once covered with ancient sclerophyll and sub tropical rainforest, with towering trees hundreds of years old.

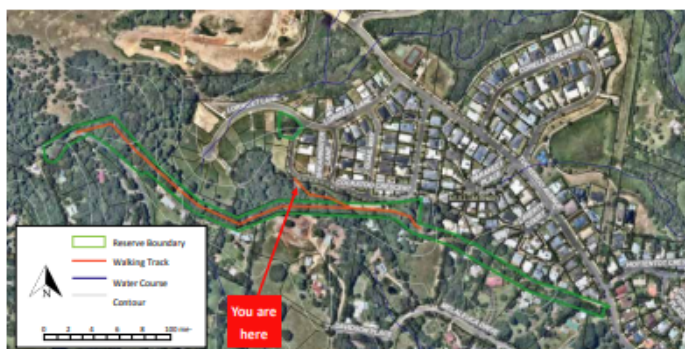
Mullumbimby was built on the back of the industry that was created by the removal of these trees.

**Mooibal Spur** and its remnant vegetation form a **significant wildlife corridor** through wet sclerophyll threatened flora and fauna habitat. The Tallowood Ridge Estate development led to concerns about biodiversity, including the removal of old growth trees.

Residents and local community groups have been working together to be caretakers of this bushland.

We would like to acknowledge and pay our respects to the Arakwal Bumberlin People of the Bundjalung Nation who are the traditional custodians of this land.

We acknowledge and extend our respect to Elders both past and present and upcoming future leaders. They want everyone to respect, appreciate and value their Country. When you walk this country take a moment to reflect on where you are, listen, look, smell, feel, stay open. Respect.



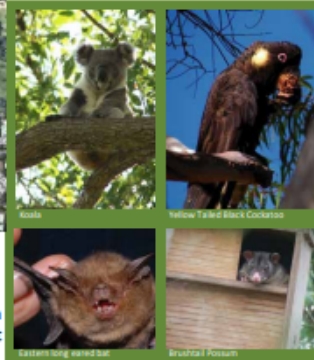
## How can you help?

1. Plant a native garden. This will connect to existing wildlife corridors and provide habitat.
2. Control environmental weeds in your garden. Many weeds in the Reserve are garden escapees: *Duranta erecta*, *Murraya murraya paniculata*, *Corky passionfruit*, *Passiflora suberosa* and *Freckle face Hypoestes phyllostachya*.
3. Don't dump green waste. Weeds are spread by dumped garden waste. Dispose of green waste at the tip or your green organics bin.
4. Be a responsible pet owner. Walk your dog on a lead and pick up the poo.



This project was assisted by the NSW Government through its Environmental Trust.

There are 8 nest boxes installed along the track, see if you can spot them. Please let us know if you see anything using them.



This area has been home to the Arakwal Bumberlin People of the Bundjalung Nation for thousands of years. We live on the edge of a shield caldera with Chincogan and Wollumbin forming remnant volcanic plugs. These places have deep spiritual significance for our first peoples and the southern boundary of Tallowood Ridge contains an ancient walkway that went from the coast to Mt Jerusalem – **The Mooibal Spur**.



For more information on your local Landcare and ways to get involved visit [www.brunswickvalleylandcare.org.au](http://www.brunswickvalleylandcare.org.au)



## Landcare Australia funds Wildlife Safe Havens Glider Project

Here's some good news to share....

Landcare Australia have just funded our Wildlife Safe Havens Glider Project under the Landcare Led Bushfire Recovery Program. This project will deliver immediate habitat support for Greater Gliders, Feathertail Gliders, Sugar Gliders and other small arboreal mammals impacted by the 2020-2021 bushfires. Greater and Squirrel Gliders are listed threatened under the BC Act2016 and EPBC Act1999. Feathertail Gliders, Sugar Gliders and other small arboreal mammal numbers are in decline.

The project will feature some exciting citizen science opportunities to help raise awareness of the habitat crisis facing Gliders. Did you know that Greater Glider populations have crashed 80% in the last 20 years due to logging, land clearing, and the rising threat of bushfires linked to climate change?

Our amazing Australian Glider family need our help to protect and create healthy habitat long into the future. Stay tuned for updates.

And many thanks to Landcare Australia for backing this important project.



Greater Glider - Credit: Jasmin Zeleny



Squirrel Glider in a Wildbnb Bushfire Recovery Project supported by WWF & Save our Species . Credit: Locky Cooper

## Thank-you, and to all at North Byron Parklands, for thinking of the wildlife when recently cleaning-up the big fallen tree.

Wildbnb's workshop has been in full-hollowing-action making a range of Hunk-of-Trunk nest boxes from this timber.

These big ones (pictured below) are over one metre deep and will be installed as part of a Large Forest Owl Research project to learn more about the threatened Owl species in the Byron Shire including Powerful, Sooty and Masked.

The project is part of a Byron Shire-wide Wildlife Safe Havens initiative - and a terrific partnership that we have with Brunswick Valley Landcare.

And on behalf of all creatures great and small, we say a huge thanks for the habitat!



Pic on Right shows 3-D printed prototype recycled plastic waste, cockatoo hollow. Next versions will be green and tan colour and design tweaked in response to monitoring. Indicative data shows that there is high interest in and some demand for these large hollows, though not yet from Glossies and there are a myriad of reasons why.

[Real estate boom for furry friends after Black Summer - Australian Geographic](#)

# SAVING OUR SPECIES



Tumut grevillea, *Grevillea wilkinsonii* (John Briggs/DPI)

# NEWS

Following the NSW Government's renewed funding commitment, the momentum our Saving our Species program has gained will continue, as we work to protect hundreds of threatened species and communities over the next five years and beyond.

You can read more about this announcement in this issue.

[Conservation from your couch](#)  ([mailchi.mp](#))



.....

## Dead, shrivelled frogs are unexpectedly turning up across eastern Australia. We need your help to find out why

### Here's how you can help

While we suspect a combination of the amphibian chytrid fungus and the chilly temperatures, we simply don't know what factors may be contributing to the outbreak. Please send any reports of sick or dead frogs (and if possible, photos) to us, via the national citizen science project [FrogID](#), or email [calls@frogid.net.au](mailto:calls@frogid.net.au).







## Media release

### Byron Shire Council



### **Byron Shire included in development of Richmond River catchment CMP**

Work has started on the development of the Richmond River Coastal Management Program (CMP), a long-term strategy for the management of the Richmond River catchment which includes parts of the Byron Shire.

In the past a Coastal Zone Management Plan focused on the management of the Richmond River in the Ballina, Lismore and Richmond Valley council areas.

“This time the plan is for a ‘whole of catchment approach’ to the Richmond River, recognising how the health of the upper catchments affect the lower reaches of the river,” Peter Boyd, Biodiversity and Agricultural Projects Officer, said.

“Just under half of Byron Shire drains into the Richmond, with waterways including Coopers Creek, Wilsons Creek and Byron Creek flowing into the Wilson River and then to the Richmond,” he said.

“It is well known that the Richmond River catchment is in poor health and the CMP will help us prioritise the issues and plan actions and activities to improve its health over time.

“While the health of the Richmond River could be better at the moment, the catchment is incredibly important to people for its cultural, environmental, recreational and commercial values,” Mr Boyd said.

Hydrosphere consultants is managing the development of the Richmond River CMP on behalf of councils including Byron Shire.

The first stage of the project, a scoping study, is currently underway and people are being asked to send in their thoughts and ideas on the problems, issues and management of the Richmond River catchment.

More information on the Richmond River CMP is available from the Hydrosphere website where there is the opportunity for people to share their local knowledge, ideas and photos via a feedback form.

For media enquiries contact Annie Lewis, Media and Communications Coordinator, on 6626 7320.

## Rare, critically endangered orchids discovered in NSW Southern Highlands after wet summer - ABC News

The latest discovery comes after DPIE officers Jedda Lemmon and Vanessa Allen found the new population.

Observations like this are critical because, without them, plant populations may end up being lost to the world before they were even known.



**Big wet, big find: Cluster of critically endangered orchids found in NSW Souther...**

A cluster of about 170 critically endangered orchids has been discovered after a wet summer in the New South Wales Southern Highlands, giving scientists...

---

## Scientists target 'Ross River' mosquito

New research to tackle one of Australia's most prolific mosquitos, responsible for spreading most cases of Ross River virus, has commenced in the Hunter Region of New South Wales.

The three-year project, between the University of Newcastle, Australia's national science agency CSIRO, the NSW Department of Health and the University of Melbourne, will use genomic sequencing to inform suppression strategies for the *Aedes vigilax* mosquito.



[CSIRO <events.announcements@csiro.au>](mailto:events.announcements@csiro.au)

---

## Giant bird-eating centipedes exist — and they're surprisingly important for their ecosystem

The Conversation By Luke Halpin, Rohan Clarke and Rowan Mott

Giant bird-eating centipedes may sound like something out of a science-fiction film — but they're not.

On tiny Phillip Island, part of the South Pacific's Norfolk Island group, the Phillip Island centipede (*Cormocephalus coynei*) population can kill and eat up to 3,700 seabird chicks each year.

And this is entirely natural. This unique creature endemic to Phillip Island has a diet consisting of an unusually large proportion of vertebrate animals including seabird chicks.



<https://www.abc.net.au/news/2021-08-04/giant-phillip-island-centipede-eats-black-winged-petral-chicks/100348608>

# FERAL NEWS

## Humane Australian breakthrough in feral pig control with poison bait, Hoggone - ABC News

Feral pigs roam across half the Australian continent and are expanding their range after recent good seasons.

Some estimates claim there are more than 24 million.

Pigs cause an estimated \$100 million damage annually to agriculture, and do untold environmental damage.



**This humane breakthrough in feral pig control targets pigs' weakest part: their...**

A newly released poison bait is being hailed as a major breakthrough in feral pig control.

.....

## Invasive species have cost Australia \$390 billion in the past 60 years, study shows

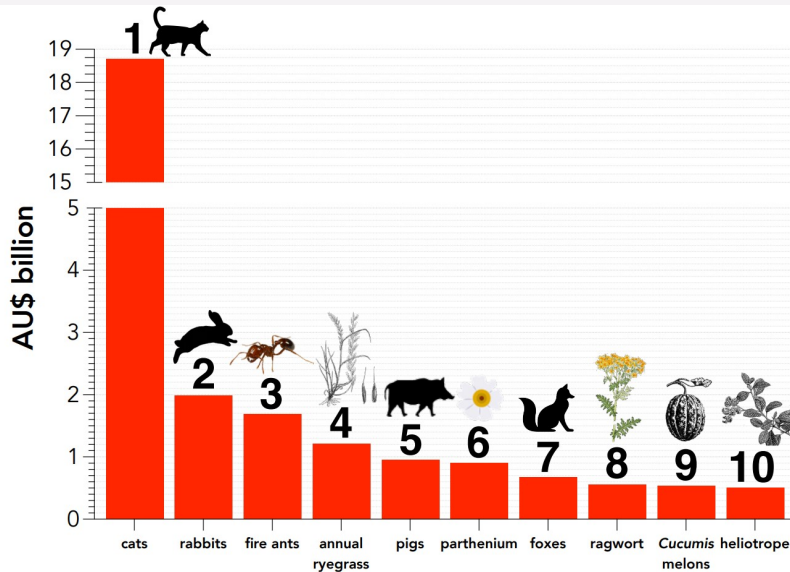
By environment reporter Jo Khan

Our bill for feral cats comes in at \$13.5 billion — but that's not the worst figure

They trample fragile environments and devastate crops, and now we can put a figure on how much damage invasive species like feral cats and weedy plants are doing to Australia's bottom line.

Feral cats are the most costly individual species, which is mostly down to population control, coming in at over \$18 billion.

But it's weedy plants that are the most expensive group on the list, according to author Corey Bradshaw from Flinders University.




## Byron Shire Council Indian Myna Trapping Program

If you have Indian Mynas in your area and want to do something about it, council has traps available for purchase for \$30.

Purchase includes training and advice on best practice RSPCA protocol trapping techniques and community member support network.

Contact Peter Boyd 66267253

An illustration of a tree with a blue sky background. On the left side of the tree, there are native birds: two red and blue lorikeets and two pink and white lorikeets. On the right side, there are several Indian Mynas (black birds with yellow beaks and feet). At the top of the tree, a white cockatoo is flying. The text "You can have native birds..." is on the left, "or Indian Mynas..." is on the right, and "but not both." is in the center. At the bottom of the tree, a group of Indian Mynas is shown attacking a red and blue lorikeet on the ground. A red leaf is falling from the tree.

**You can have native birds... or Indian Mynas... but not both.**

The Indian Myna is classed as one of the *100 most invasive species in the world*. Indian Mynas take over nesting hollows from native birds, they kill the chicks and destroy eggs.

# SEMINARS AND WORKSHOPS



## **Glossy Black-Cockatoo Birding Day is back!**

**11 – 12 September 2021**

**Birding Day Workshop with special guest Calypto**

**14 August 2021**

Glossy Black-Cockatoos are one of Australia's smallest and rarest cockatoos and we are lucky to have a small population living in the Tweed Valley. Once a year, volunteers come together to participate in the Glossy Black Conservancy's bird count. This year, the Birding Day takes place over two days on 11 – 12 September across Southeast Queensland and North-eastern NSW. Volunteers are invited to register here <http://bit.ly/GBCvolunteer>. Knowing where the cockatoos are means we can do a better job of habitat protection.

Tweed Shire Council, City of Gold Coast and Griffith University have teamed up to run a workshop prior to the Birding Day at Griffith University Gold Coast Campus on 14 August 2021. This workshop is a great way to learn skills on how to identify this charismatic bird, feed trees, signs of feeding, how to record an observation and learn the difference from the more common Yellow-tailed Black-Cockatoo. As a special treat Calypto the Glossy Black-Cockatoo will be joining the workshop so we can get an up-close look at this cheeky bird. You can register for the workshop here <https://forms.office.com/r/Y9MhjCjzPj>

If you can't make it to the workshop , but still want to join the Birding Day then we suggest you watch this short video called Identifying Glossy Black-Cockatoos [https://youtu.be/\\_y4ZjTiXOuc](https://youtu.be/_y4ZjTiXOuc)

Glossy Black-Cockatoo sightings can also be recorded anytime at <https://glossyblack.org.au/>.

## Monday 6th September – Mevlana Hall Myocum

The Department of Primary Industry (DPI) has a great practical hands-on soils workshop held in conjunction with Local Land services and Soils Knowledge Network, who comprise of a great team of experts to learn from. Please see the attached SKN workshop flyer attached.

Bring a soil sample if your own or your Soil test results if you have them if you don't have them this is a great time to get some done. You can contact Southern Cross Uni EAL Labs, I have attached some soil sampling guides for your reference. You can also contact Amanda Musgrave at Wollongbar DPI who do soil tests also.

**Amanda Musgrave**  
**DPI - Wollongbar**  
**wollongbar.csu@dpi.nsw.gov.au**  
**0437 574 628**

Soils testing is something I would recommend to anyone who hasn't and this is a great time to learn exactly how to assess your results and improve things going forward.

To Register click on the below link or call 1300 795 299  
[North Coast Local Land Services Event Registration \(alchemer.com\)](http://alchemer.com)



.....

### **Grazing Management Principles Online Course - Dr Judi Earl - SmartsoilEDU**

This course is designed to provide an introduction to the theory of the range of ecological processes that occur in grazing environments and provide a practical guide to regenerative grazing management.



[Online Courses - SmartsoilEDU](#)

# REGENERATIVE AGRICULTURE

## New book for people buying in rural areas

**'Farmers Farm and Cows DO Moo' is the name of a new booklet aimed at people who are moving into rural parts of the Byron Shire.**

The booklet is designed to help people understand what life in rural areas is like especially when it comes to farming, noise and things like waste management.

Andrew Cameron, Council's Agricultural Officer, said it comes as surprise to people that more than 90 percent of the Byron Shire is rural land and often new residents aren't prepared for some of the challenges that presents.

"Some people aren't prepared for things like noise and smells from nearby farms including cattle and machinery like tractors.

"Farming is a seven-day-a-week job so the concept of a quiet retreat is often not reality and this may create tensions and problems with new neighbours.

"For people from cities, things like waste, on-site sewerage systems, dirt roads, dust, odour, floods and fire also present unexpected challenges.

"The aim of this new booklet is to provide information to people thinking of buying in the rural areas of the Shire as well as new rural residents as it will answer some of their questions.

"It also includes a checklist of a variety of things to consider when thinking to purchase rural land," Mr Cameron said.

Download from Council's website or people can pick up a free copy from the Council offices at Mullumbimby.



## Simple soil biology helps pasture thrive

Jamie Brown from The Land looks at what is happening on the farm of SoilCare members Cathy Eggert and Jeremy Bradley

From outer space - on Google maps - the difference is clear between two paddocks on the same alluvial flat in the Hastings Valley near Wauchope. The fence line between them divides light and dark with the latter supported by biologically active soil.

"The best things in life are free," property owner Jeremy Bradley said, who with his partner Cathy Eggert thoroughly tested the two adjacent paddocks to set a baseline of data after 10 years of regenerative work.

"Both paddocks get the same sunshine, rain and air. Soil health, regeneration and productivity depends on maximum retention of the free stuff. The sun and the rain provide the energy for photosynthesis and the air provides the nitrogen, oxygen and carbon needed for microbial activity."

Read all about it in [The Land](#)



**Climate change has already hit Australia.  
Unless we act now, a hotter, drier and more dangerous future awaits,  
IPCC warns**

The Conversation, 9 August 2021

Australia is experiencing widespread, rapid climate change not seen for thousands of years and may warm by 4 degrees C or more this century, according to a highly anticipated report by the Intergovernmental Panel on Climate Change (IPCC).

Potential unprecedented increases in climate extremes such as bushfires, floods and drought. But it says deep, rapid emissions cuts could spare Australia, and the world, from the most severe warming and associated harms.

[Read the full article Climate change has already hit Australia. Unless we act now, a hotter, drier and more dangerous future awaits, IPCC warns \(theconversation.com\).](https://theconversation.com/climate-change-has-already-hit-australia-unless-we-act-now-a-hotter-drier-and-more-dangerous-future-awaits-ipcc-warns-14848)



- ABARES says changing climate is costing every farm, on average, \$30,000 every year. [ABC news](#)

(For more in-depth on the ABARES report go to the Australian Government's Department of Agriculture article, [Climate change impacts and adaptation on Australian farms](#))

Ground breaking trial returns cotton textile waste to cotton fields [Australian Farmers](#) on-line news



# Webinar: Regenerative Agriculture and Soil Microbial Carbon Pump (MCP)

Rodale Institute - Dr Yichao Rui

In the past decade, there has been a significant breakthrough in our understanding of soil organic matter formation and the carbon cycle. Now we increasingly know that humus actually may not exist in soil, and soil microbes not just are responsible for decomposition, but also contribute directly to soil organic matter formation. This brand new mechanistic understanding has been described as the soil "microbial carbon pump (MCP)

[Webinar: Regenerative Agriculture and Soil Microbial Carbon Pump \(MCP\) Rodale Institute - Dr Yichao Rui](#)



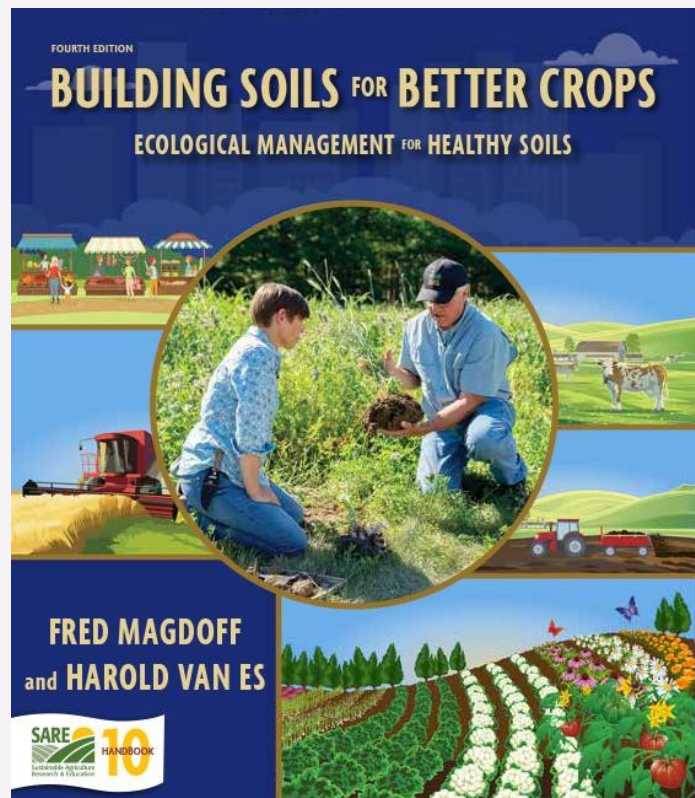
## BUILDING SOILS FOR BETTER CROPS NEW - 4th Edition

SARE's newest book, 4th edition of Building Soils for Better Crops, provides rich detail on ecologically sound practices for developing and maintaining healthy soils.

It provides step-by-step information on soil-improving practices as well as in-depth background-from what soil is to the importance of organic matter. Case studies of farmers provide inspiring examples of how soil-and whole farms-have been renewed through these techniques.

Free book (PDF 13 MB) download from the [SARE Website](#)

(SARE - Sustainable Agriculture, Research & Education - USDA)



# FUNDING



## Farm Innovation Fund

The Farm Innovation Fund is part of the NSW Government's Drought Strategy and is a long term, low interest rate loan for NSW farmers for permanent on-farm infrastructure. The Farm Innovation Fund helps farmers to:

- improve farm productivity - reduce risks and improve efficiencies by building fodder and grain storage facilities, sheds, fencing, roadworks and solar power conversions.
- manage adverse seasonal conditions - improve water efficiencies with irrigation systems, cap and piping of bores, new dams, install water tanks and desilting of ground tanks.
- ensure long term sustainability - increase the viability of a farm business and improve pasture and soil health, plant trees for shade and wildlife corridors, eradicate weeds, flood proof property and fence river banks.

For more information, click [here](#)





**COMMUNITY GRANTS PROGRAM**

**APPLICATIONS OPEN  
AUG 4 TO SEPT 6**

**Not-for-profit community groups and organisations across the 7 LGAs of the Northern Rivers are encouraged to apply for grants between \$2,000 - \$10,000, with an average grant recommendation of \$4,000 - \$5,000.**

The Application Form is now available for download [here](#). Applications close at midnight on Monday 6 September.

For more information please download the guidelines [HERE](#)

For enquiries contact NRCF's Community Impact Officer, Kyla White at [grants@nrcf.org.au](mailto:grants@nrcf.org.au) or 0499 862 886

## Do you have habitat you want to help recover on your property? Does your bush need a helping hand

**Funding of up to \$18,000** is available to help landholders and community groups protect and enhance waterways, wetlands, and habitat in the North Coast region of NSW.

The Riparian and Habitat Recovery project is run by North Coast Local Land Services and aims to support the recovery of threatened species and threatened ecological communities after the 2019-20 bushfires and is supported by the Australian Government's Bushfire recovery package for wildlife and their habitat.

You can check types of works, your site eligibility, and potential species impacts in the Funding Guidelines and using the interactive map.

**Applications close 31st August - find out more <https://bit.ly/3rRBwe1> #NLP**

**Works must be completed by 30th April 2022.**

50% of the grant is paid to the landholder upfront and the remaining 50% is paid on completion of works.

Priority will be given to projects on properties in or adjacent to fire scars and with Threatened ecological communities and Threatened species.



Local Land  
Services

# LAND FOR WILDLIFE

## Rare footage of endangered marsupial kowari captured in outback Queensland

ABC Western QLD By Ellie Grounds

Footage of a threatened desert marsupial has been captured in outback Queensland for the first time in a decade, ecologists say.

- The carnivorous critter is listed as vulnerable in Queensland
- 14 were recorded on a recent monitoring trip at Astrebla Downs National Park
- Video of the marsupial is captured for the first time in more than a decade

The tiny, carnivorous kowari lives in the arid regions of Queensland, where populations are vulnerable, and in South Australia where it is listed as endangered.

Feral cat control efforts at Astrebla Downs have eliminated more than 3,000 cats over the past decade.

It is good news for the park's bilby population too, with 471 spotted on the recent trip.



---

## Woylies make a historic return to the Northern Territory

They're small, they're cute and they're back! Australian Wildlife Conservancy (AWC) celebrated 30 years of effective conservation work this week by making history, with the successful reintroduction of Woylies or Brush-tailed Bettongs to the Northern Territory where they have been locally extinct for over 60 years.

The NT's special new residents were made up of 22 males and 22 females – all females were carrying pouch young, giving the population an extra boost.



[Woylies make a historic return to the Northern Territory \(australianwildlife.org\)](http://australianwildlife.org)

# WEED OF THE MONTH

## Coral berry *Ardisia crenata*

This nasty, yet beautiful little plant is a very successful weed, don't be fooled or wooed by the exquisite red berries. This plant is an environmental weed and is readily spread by our wildlife.

If you see this plant with collect and dispose. Burn or bin the berries; they have woody centres with excellent viability.

Use a knife to dig out the plant including roots then hang up to dry and die!



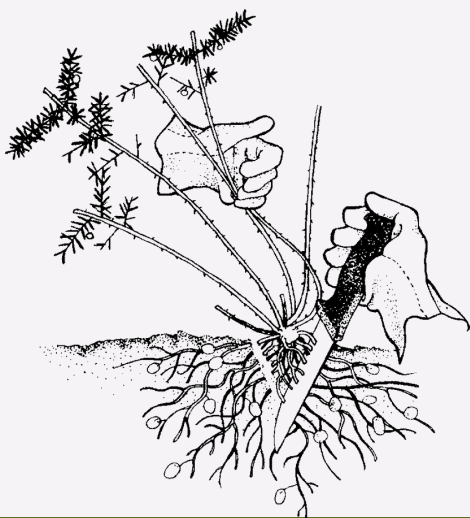
A small upright evergreen shrub with glossy dark green leaves. Its alternately arranged leaves are relatively thick and have finely toothed margins. Its fragrant flowers are white to deep pink in colour and are usually covered in numerous minute black spots. Its showy bright red berries, which hang down in clusters, can remain on the plant for months.



Fruit appears Winter and Spring.

Naturalised in the coastal districts of eastern Queensland, in north-eastern New South Wales.

This weed is not readily controlled with herbicide due to the thick leathery leaves, woody stem and tough root system.



Using a knife  
to crown out  
weeds

## UPDATED Weeds of the North Coast

Identifying and controlling weeds just got easier with the highly-anticipated release of the "Weeds of the North Coast of NSW: a guide to identification and control" book.

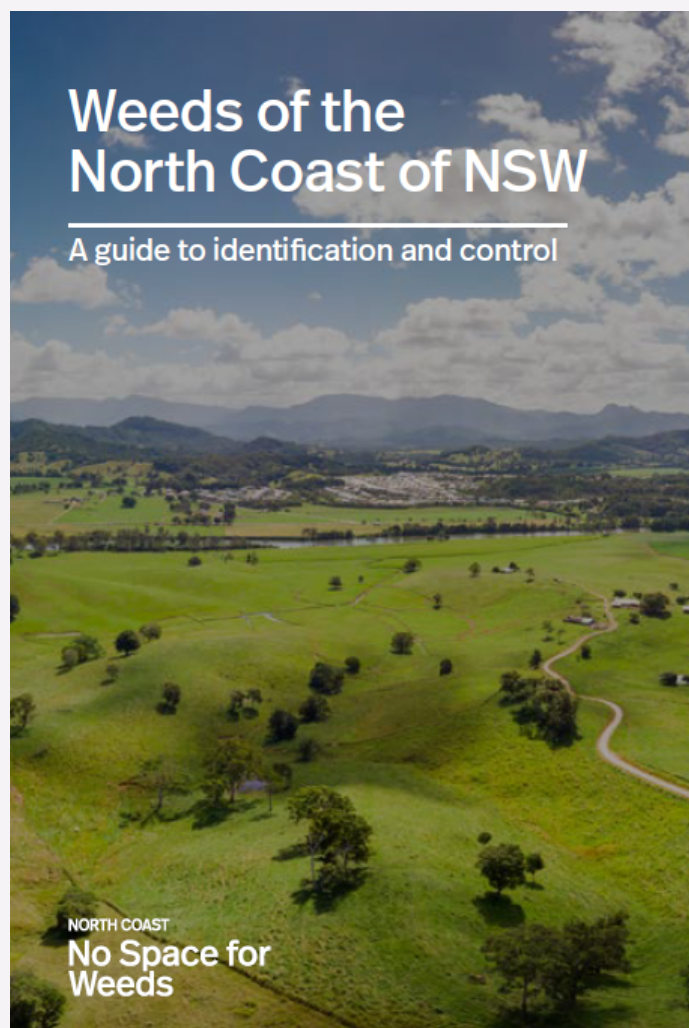
The "invaluable field guide and educational tool" will show users how to identify priority weeds, methods of control and how to understand their responsibilities under the Biosecurity Act.

The new book provides information on which weeds need to be reported, eradicated and contained.

North Coast Local Land Services Regional Weed Coordinator, Kylie van der Kolk said it was each person's responsibility to control, report and prevent the spread of weeds and this vital resource would aid this process.

"The book also includes details about weed toxicity, plants that should not be sold, and some of the common species that impact agriculture and the environment," Ms van der Kolk said.

See details on the [North Coast LLS](#) website



# WORKING BEES

- why not get out and get involved in one of our local groups?

For all Landcare Working Bees please wear protective clothing - long pants, long-sleeved shirt, closed-in shoes, hat, gloves and bring water, sunscreen, and insect repellent. Please always contact the group coordinators before attending a working bee as plans do change!

Bangalow Land and Rivercare, Bangalow

WHEN: every Saturday 8:30am

WHERE: find out from

CONTACT: Noelene Plummer [bangalowlandcare@gmail.com](mailto:bangalowlandcare@gmail.com) 0431200638 66874470

Green and Clean Awareness Team, Byron Bay

WHEN: 3rd Sunday of the month 9:00am

WHERE: Meet Main Beach, Byron Bay

CONTACT: Veda Turner [vedaturner@gmail.com](mailto:vedaturner@gmail.com) 0427 857 991

Heritage Park Landcare, Mullumbimby

WHEN: alternate Saturdays 9:00am – 11:00 am

WHERE: Heritage Park, Mullumbimby

CONTACT: Diana Hughes [bromspot@gmail.com](mailto:bromspot@gmail.com)

Jinangong Landcare, Ocean Shores

WHEN: 1st Sunday of the month

WHERE: The Tunnel Road, Ocean Shores

CONTACT: Ian Parer [ianparer@hotmail.com](mailto:ianparer@hotmail.com)

Mullum Town Landcare, Mullumbimby

WHEN: last Sunday of the month

WHERE: find out from Jude Alcorn

CONTACT: Jude Alcorn 0411 298 356 [judealcorn@yahoo.com.au](mailto:judealcorn@yahoo.com.au)

Ocean Shores Landcare, Ocean Shores

WHEN: each Friday at 8.30 – 11.00 am (8.00am DST)

WHERE: corner of Yallakool Drive and Warrambool Road, Ocean Shores

CONTACT: David Kemp [dnkemp77@gmail.com](mailto:dnkemp77@gmail.com) 0427 650 861

Tallowood Ridge Locality Landcare, Tallowood Ridge Mullumbimby

WHEN: Second Saturday of the month from 3pm (winter), 4pm (summer).

WHERE: Gathering Tree Pocket Park, Cockatoo Cres Tallowood Ridge Estate

CONTACT: Joanne McMurtry [jmcmurtry@bigpond.com](mailto:jmcmurtry@bigpond.com)

South New Brighton Dunecare

WHEN: 1st Friday of the month 1:30pm - 4:30pm

WHERE: Meet at southern end of the Esplanade at the Strand beach access point.

CONTACT: Robyn Bolden [robyn.bolden@optusnet.com.au](mailto:robyn.bolden@optusnet.com.au) 6680 1970

Suffolk Park Dunecare

WHEN: 1st Saturday of the month

CONTACT: Helen Brown [hellyh@bigpond.com](mailto:hellyh@bigpond.com) 6685 4964

Tyagarah Landcare

WHEN: Each Thursday 9:00am – 11:00am

WHERE: 23 Prestons Lane, Tyagarah

CONTACT: Bela Allen [bela\\_allen@yahoo.com](mailto:bela_allen@yahoo.com) 6684 7113

Can't find a group near you? We have many other groups who meet on an ad hoc basis (contact us for more details) or if there isn't an existing group in your neighbourhood or you are interested in looking after a particular area, BVL can help you to form a locality group under the BVL umbrella.

# LINKS

- Arakwal <http://arakwal.com.au/>
- Border Rangers Alliance [http://www.greasternranges.org.au/border\\_ranges/overview/overview](http://www.greasternranges.org.au/border_ranges/overview/overview)
- Bangalow Koalas <http://www.bangalowkoalas.com.au/>
- Bangalow River and Landcare <http://www.bangalowlandcare.org.au/>
- Big Scrub Landcare <https://www.bigscrubrainforest.org.au/>
- Brunswick Valley Landcare <http://www.brunswickvalleylandcare.org.au/>
- Byron Bird Buddies <http://www.byronbirdbuddies.com.au/>
- Byron Community College <http://www.byroncollege.org.au/>
- Byron Shire Council <http://www.byron.nsw.gov.au/>
- EnviTE [www.envite.org.au](http://www.envite.org.au)
- Environmental Trust <http://www.environment.nsw.gov.au/grants/envtrust.htm>
- Friends of the Koala [www.friendsofthekoala.org](http://www.friendsofthekoala.org)
- Federal Landcare Inc [federalandcare@gmail.com](mailto:federalandcare@gmail.com)
- Local Land Services [www.northcoast.lls.nsw.gov.au](http://www.northcoast.lls.nsw.gov.au)
- North Coast Local Land Services <http://northcoast.lls.nsw.gov.au/>
- Border Ranges Richmond Valley Landcare [www.brrvln.org.au](http://www.brrvln.org.au)
- Mullumbimby Community Gardens <http://mullumcommunitygarden.wordpress.com/>
- North Coast Nature <http://www.northcoastnature.org.au/>
- Richmond Landcare Inc. <http://www.richmondlandcare.org/>
- Rous County Council (formerly Far North Coast Weeds) <http://rous.nsw.gov.au/>
- Soilcare [http://www.soilcare.org\\_](http://www.soilcare.org_)
- Tweed Landcare Inc. <http://www.tweedlandcare.org.au/>
- Wilson's Creek Huonbrook Landcare <http://www.wilsonscreeklandcare.mullum.com.au/>

**For information about Landcare or other natural resource issues in Byron shire please contact  
Landcare Support Officer, Alison Ratcliffe 6626 7028  
(Mon, Tues, Wed)**

**[aratcliffe@byron.nsw.gov.au](mailto:aratcliffe@byron.nsw.gov.au)**

**Project Officer, Rochelle Merdith 6626 7201 [rmerdith@byron.nsw.gov.au](mailto:rmerdith@byron.nsw.gov.au)**

**[www.brunswickvalleylandcare.org.au](http://www.brunswickvalleylandcare.org.au)**

