



Newsletter for Landcare and Dunecare in Byron Shire



<http://www.brunswickvalleylandcare.org.au/>

December 2019

Thank you to all the Landcare and Dunecare volunteers

**Merry Christmas and a happy New Year
to you and your families.**

We have a bumper crop of events planned for next year so we look forward to seeing you all in 2020.

We would like to introduce Rochelle

Rochelle Merdith has started work with BVL as Project Officer. She will be managing all our funded projects and helping to organise a lot of our events.

Her contact details are:

rmerdith@byron.nsw.gov.au 6626 7201

As of the end of January Alison will be working Monday, Tuesday and Wednesday.

Rochelle will be working Fridays based in Byron Shire Council offices in Mullumimby.

We would like to say a big THANK YOU to Bela Allen

Bella retired from the position of project officer earlier this year after being involved since the creation of Brunswick Valley Landcare. She has dedicated much time and effort over the course of the years which is greatly appreciated. All the best Bela!

Christmas gift ideas

Looking for last minute meaningful gift ideas!

<https://www.wires.org.au/gift-certificates>

<https://currumbinsanctuary.com.au/our-stories/news/compassionate-gift-giving-adopt-native-australian-animal-christmas>

<https://www.wildlifecarers.com/donation-gift-cards/>





The December issue of Village Eco News is now available. <http://brunswickvalleylandcare.org.au/wp-content/uploads/2016/06/Village-Eco-News-Issue-38-December-2019.pdf>



In the Valley

Rainforest News and Views



The December edition of the Wilsons Creek Huonbrook Landcare newsletter is now available with lots of local information for those people living in the valleys.

Please take the time to click on the link below as there are some fantastic articles in this edition, including:

- Fire regeneration and weeds
- Cane toad controls
- Threatened species discoveries
- Black Taro control

<http://brunswickvalleylandcare.org.au/wp-content/uploads/2016/06/In-the-Valley-Dec-2019.pdf>



LAND
REGISTRY
SERVICES

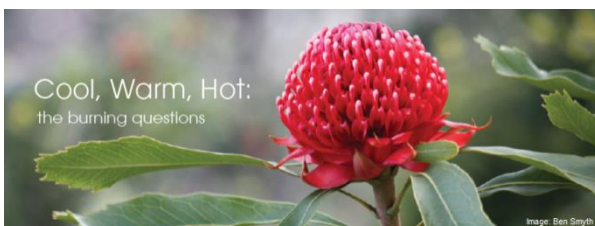
Support for landholders affected by NSW bushfires

NSW Land Registry Services (NSW LRS) is helping landholders affected by the recent NSW bushfires by providing title searches and plan images of their property free of charge.

Property searches and plans can assist landholders with insurance claims and development applications to council, as well as provide peace of mind regarding land ownership following natural disasters.

If you have been affected by the recent bushfires and would benefit from access to land and property information from the land titles register, please call our **Contact Centre** on **1300 396 076** (regional callers) or (02) **8776 3575** and we can discuss how best to assist you.

Further details are available on our website: [click here for more information](#).



Nature Conservation Council
The voice for nature in NSW



Cool, Warm, Hot:
the burning questions

Call For Abstracts

Nature Conservation Council's 2020 Bushfire Conference

Tuesday 19th and Wednesday 20th May

Field Day Thursday 21st May

NSW Teachers Federation Conference Centre, Sydney

The Nature Conservation Council of NSW is proud to present our 12th Bushfire Conference **Cool, Warm, Hot: the burning questions**. We are now accepting abstracts for presentations, speed talks and posters.

Please submit abstracts by Wednesday 12th of February 2020.

This multi-disciplinary conference will explore how different fire intensities can influence ecosystems and communities in a changing climate. Presentations will investigate the effects of low, medium and high intensity fires on the four sub-themes: climate change; fire ecology; ferals, weeds and restoration; and community resilience. The conference will examine how cool, warm and hot fires can be applied in fire

management as part of an optimal fire regime to achieve multiple objectives for biodiversity and cultural values, hazard reduction objectives and community resilience.

Building on themes from previous conferences, we will continue to showcase scientific research and on-ground projects to highlight lessons from across a range of ecosystems and communities. This conference is an opportunity to contribute to discussions on best fire management practices to help protect, support and restore biodiversity, ecosystems and communities.

Each application should nominate a key theme and address at least one of the four sub-themes. For more information please refer to the [How to Submit an Abstract document](#).

Key Themes

1. Cool (*low intensity fire*)
2. Warm (*medium intensity fire*)
3. Hot (*high intensity fire*)

Sub-themes

- a. Climate Change
- b. Fire Ecology
- c. Ferals, Weeds, Restoration
- d. Community Resilience

Who should contribute? Fire ecologists, researchers, fire agencies, land managers, restoration consultants and organisations/ agencies/ communities/ individuals investigating and using fire to support ecological values.

To submit an abstract: Please complete an [Abstract Submission Form](#), or [visit our website](#).

Further information: contact the Bushfire Program team at BushfireConf2020@nature.org.au or (02) 9516 0359.



Landcare
New South Wales

The Landcare NSW newsletter has an update on the NSW Landcare Program 2019-2023 (which funds Alison's position for 1.5 days per week) and the state conference in Broken Hill.

<https://landcarensw.org.au/publications/the-advocate-newsletter/>

STORIES to inspire and give you hope

Successful Community Environment Program Grant

Brunswick Valley Landcare has been successful in receiving \$9,500 for the 2020 Mothers Day Community Tree Planting. The annual mother's day community tree planting project is a much loved community event for families held near to Mullumbimby.

On Mothers Days 10th May 2020 Brunswick Valley Landcare (BVL) will hold a community event that incorporates a native tree planting to restore degraded land with a fun and educational day for local community with music from local musicians, delicious food and kids activities. Grass roots community capacity building and environmental awareness successfully delivered in a socially inspiring and fun activity. Next year, 2020, will be the 10th anniversary of this event so we would like to make the event a celebration to remember.

This project is supported by the Commonwealth Government through its Community Environment Program.



Successful NRCF Grant

Brunswick Valley Landcare has been successful in receiving \$10,000 for their



project "growing seeds of hope: Connecting Schools to Regenerative Agriculture" from the Northern Rivers Community Foundation and Brunswick Valley Landcare (BVL) under Farming into the Future. This is in partnership with the Dorrroughby Environmental Education Centre (DEEC). We will create and run field days on regenerative agriculture with supporting educational materials for secondary school students and their teachers. Having both a social and environmental focus it creates connection by bringing students and their teachers together in a hands-on day of activities, learning and demonstrations from experienced practitioners and professionals. We aim to:



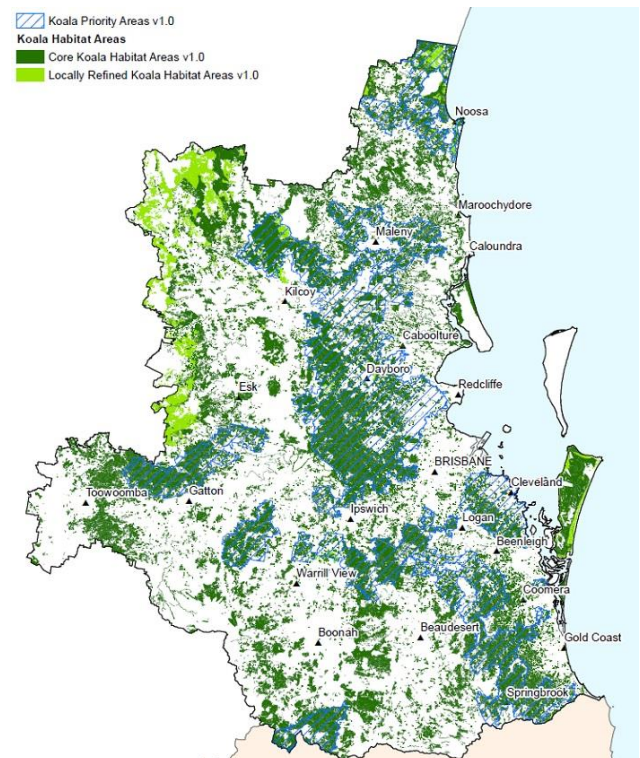
- create and value connections between school students, teachers, farmers and indigenous land manager to "spark" change and encourage students to think about how their food is produced
- promote agriculture practices to combat climate change, make a profit, and produce healthy sustainable products
- provide student learning & support materials for continued benefit through a repeatable annual program
- create connection via informal teacher professional learning and networking
- encourage schools to begin junior Landcare groups by providing financial support and incentives.

Koala conservation strategy for south-east Queensland leaves conservationists 'cautiously optimistic' by ABC Gold Coast, Dominic Cansdale

There will be no new developments within 570,000 hectares of a 'koala priority area' in south-east Queensland, according to a new draft strategy announced by the State Government.

Key points:

- The South East Queensland Koala Conservation Strategy 2019-24 identifies 570,000 hectares of koala habitat for protection
- Habitat loss is a major contributor to south-east Queensland's declining koala population
- Conservationists have "cautiously" welcomed the strategy but urged action must be taken now
- Koala populations have decreased by up to 80 per cent over the past 20 years with almost three-quarters of essential habitat destroyed since 1960.
- Premier Anastacia Palaszczuk said areas identified as vital for koala conservation will be preserved in what is a 'once in a generation opportunity'.



"There'll be allowed some limited clearing for fire breaks, but that's basically it," she said.

"This is about the continual survival of a vulnerable species."

Read the full story here <https://mobile.abc.net.au/news/2019-12-08/south-east-qld-koala-conservation-draft-plan-released/11777716?pfmredir=sm>

REGENERATIVE AGRICULTURE

Ground Cover - Podcast series

Welcome to Ground Cover. A podcast created for farmers, by farmers. Ground Cover is a uniquely Australian podcast series exploring real life stories of land managers who have undertaken the transition from conventional farming to regenerative agriculture. In this series, we share unique and honest conversations about the challenges and opportunities of regenerative agriculture, so you can make informed decisions about how to best manage your land. Proudly brought to you by The Regenerative Agriculture Alliance and Southern Cross University. <https://pod.link/groundcover>



Young Farmers Connect Leadership Team

We are currently seeking passionate individuals to support and represent new and young farmer issues, creating collaborations and contributing to our network, events and activities.

We are scoping for applicants from each local government area to form our 2020 leadership group.

Representation: Tweed, Byron, Kyogle, Lismore, Ballina, Richmond, Clarence LGA's

Commitment

Online Meetings: Every month via teleconference.

Field Days: Every second month

Deliverables

- Produce at least 8 local young farmer stories each year.
- Attend monthly committee meetings.
- Facilitate at least 1 field days in their area annually.
- Provide support for 2 additional rostered field days.
- Actively contribute to and promote online YFC network forums and events (facebook, Instagram etc).
- Liaise with community groups, government and private organisations to develop and promote the YFC objectives.
- Contribute to special projects and advocacy.

Why should I get involved in the leadership group?

Young Farmers Connect is important because it:

- * Builds and strengthens community
- * Provides opportunities for new friendships and business relationships
- * Promotes sustainable land use and ethically grown produce.
- * Offers cost-sharing opportunities for seed or equipment, price negotiation, and labor pooling.
- * Creates a venue for continuing education, mentorship, and open dialogue
- * Offers young and beginning farmers a collective voice in their community
- * Provides a platform for advocacy and with government agencies



Aspiring and Next Gen Farmer surveys

Aspiring and Next Gen Farmer surveys are gathering vital info on the opportunities and challenges faced here in Oz by next Gen and future farmers.

In filling out this survey, you are directly informing the design of an Incubator Co-farm here in Australia as well as a range of other work and initiatives focused on growing, supporting and enabling new and future farmers and contributing to a more secure, fair and local food future.

Spread the word to all your farmie and fair food focused friends!

Survey links - www.youngfarmersconnect.com/research



Smelling Soil Tool - Soil CRC for High Performance Soils Research Project

[Visit the Soil CRC Projects](#) page and learn about more projects that are developing tools for farmers.



Bachelor of Science with a regenerative agriculture major

Conventional, intensive agricultural approaches have left in their wake a growing number of serious environmental issues, degrading soils and reducing landscape water holding capacity. Looking to the future of food production demands that we rethink our approach to farming systems.

Drawing on the University's specialist expertise in plant science, agronomy, ecology, agroforestry, environmental chemistry and socio-ecological systems, this major delves into the emerging practices of, and growing evidence-base for regenerative agriculture, examining human ecology, agroecology, regenerative agronomy and soil management as well as the planning of rural landscapes.

The [Bachelor of Science with a major in regenerative agriculture](#) develops specialist knowledge in a whole-of-system approach to food production and farm management.

It is designed for students who want to be a part of a new way of farming that better supports, and is supported by natural processes, building more resilient farms and farmers in a future of increased seasonal and weather variability.

<https://www.scu.edu.au/study-at-scu/courses/bachelor-of-science-3007291/>



Australia Needs A National Pollination Policy and More Bees

A 2018 study from Curtin University found that 53 crops in Australia's agriculture industry depend on bees for pollination.

With a wide range of other crops showing increased quality and yields where bees contribute, the Curtin study estimated that honey bees contributed \$14.2 billion a year in economic value. Put simply,

Australia may not have enough bees for the pollination task implied by the agricultural industry's target.

Read the full article here <https://www.nationalgeographic.com.au/australia/aussie-agriculture-future-needs-to-bee-secure.aspx>



Big Food Corporations Invest in Regenerative Agriculture

General Mills, the packaged food giant, is one of several Big Food corporations jumping on the regenerative agriculture bandwagon, escalating the buzz around the idea that capturing carbon in the soil could reverse climate change. The company took the lead when it announced this spring that it would apply regenerative agriculture to 1 million acres by 2030 - about a quarter of the land from which it sources ingredients in North America.



Read the full article here <https://www.nbcnews.com/news/us-news/can-regenerative-agriculture-reverse-climate-change-big-food-banking-it-n1072941>

Soil Trooper - a natural soil ameliorant and effective on control of *Sporobolus* Grasses

Soil Trooper is a pure source of *Nigrospora oryzae*, a native soil fungus to be used as a soil ameliorant.

"Parra Trooper" was the original name given to the *Nigrospora oryzae* native fungus product developed by Beechwood Biological Solutions.

We've seen a fair bit about it in the news since the APVMA decided the native fungus was an "unregistered agricultural chemical" and couldn't be promoted or supplied for the purpose of controlling Giant Parramatta Grass and other closely related Weedy *Sporobolus* Grasses. So, it's back to transplanting infected plants to spread *Nigrospora oryzae* if your intention is to control weedy *Sporobolus* grasses .



For a profile of Giant Parramatta Grass (*Sporobolus fertilis*) visit <https://weeds.dpi.nsw.gov.au/Weeds/GiantParramattaGrass>

For more info on Soil Trooper visit <https://www.beechwoodbiological.com.au/>

The answer to climate-killing cow farts may come from the sea

ONE day in January 2014, police rushed to a farm in Rasdorf, Germany, after flames burst from a barn. They soon discovered that static electricity had caused entrapped methane from the flatulence and manure of 90 dairy cows to explode.



Read the <https://grist.org/article/the-answer-to-climate-killing-cow-farts-may-come-from-the-sea/>

Article Source: Grist.

Cane farmer Len Parisi wins Reef Champion award for building wetland and reducing nutrient run-off

By [Charlie McKillop](#)

When Len Parisi's granddad came to far north Queensland in 1929 to start cane farming, he was handed an axe and told to get to work.



Key points:

- Far north Queensland cane farmer, Len Parisi, wins a Reef Champion award for his work in protecting the Great Barrier Reef
- Mr Parisi says in his grandfather's day trees were bulldozed to plant cane, but times have changed
- The cane farmer has planted 7,500 trees and is restoring a wetland to catch nutrient run-off into the reef

As the story goes, he asked "Which trees do I cut down?" The answer: all of them.

"The old system was put it under cane at all costs. Bulldoze wherever, knock it all down ... well, those days are gone," Mr Parisi said.

"Times are a changing". The younger generation is more advanced, we definitely want to do a better job than we did in the past."

To read the full story visit <https://www.abc.net.au/news/rural/2019-11-28/cane-farmer-len-parisi-reef-champion-award/11741222>

Meet the farmers embracing climate change and thriving

By national rural reporter [Caitlyn Gribbin](#)

PHOTO: [Jeff Burch has taken the significant step of purchasing land further south because of changing climate.](#) (ABC News: Caitlyn Gribbin)

Jeff Burch roars with laughter when asked if he's turning into a greenie.

"I don't know if I'd go that far!"

But it's a fair question to pose to the winemaker.

He has just spent hours outlining the environmental changes he is introducing at his Margaret River vineyard in Western Australia.

To name a couple — a long, dark green cloth is attached to rows of grapes to block out extreme sun and compost and hay is spread under vines to retain moisture.

And the creme de la creme? A special "sunscreen" that is sprayed onto precious grapes.



"A bit like your face, when your face gets sunburnt it gets harsh, it gets a little bit stiff," Mr Burch said.

"It's crucial to protect the grapes, so we give them a sunscreen so that the skins don't dry up and crack."

The clay-based material is mixed with water and sprayed onto the grapes — it washes off once harvest rolls around.

"The skins are crucial for tannins and for colour, so we need to have soft skins."

To read the full story visit <https://www.abc.net.au/news/2019-11-29/australia-talks-farmers-embracing-climate-change-thriving/11738820>

Does it taste like chicken? Australian insects a potential new snack

By Amy Edwards, Kashmi Ranasinghe, CSIRO

Add an extra crunch and protein hit to your snacks with edible insects! Image: Dr Bryan Lessard

Are you conscious reducing your impact on the environment? Looking to pack a protein punch into your daily diet? Well, crunching down on some edible insects could be for you.



Insects are great for your health – something to really keep in mind for our growing global population. Crickets, for example, can be as high as 60 per cent protein (depending on the species). And with around [2000 edible insect species](#) and 2 billion people already eating insects globally, there's bound to be something for all of us.

The United Nations estimates that the edible insect market will be worth \$AUD1.5 billion by 2023.

This is because they require a fraction of the land and water required to farm them compared to traditionally farmed animals like cattle.

Do we hear crickets chirping? Hear us out

What exactly do these insects taste like? We asked Dr Bryan Lessard, a.k.a. Bry the Fly Guy. He's hooked on them after trying a cricket-garnished baguette at a US bug festival.

If you're not game enough to eat a whole cricket, Bry suggests you opt for cricket powders. They offer the same great flavour and sustainable protein. Cricket powder can be used in protein shakes, chocolate chip cookies and even cricket tacos. Yum!

"Prawns have more legs than insects and they are equally as delicious."

Feeling peckish for a sustainable future

Research Scientist Dr Rocio Ponce Reyes is hopeful the symposium will also help establish future collaborations for new research. Particularly in the areas of culture, environment and biosecurity, health and diet, and commercialisation.

To read the full story visit

["https://blog.csiro.au/australian-insects-potential-new-snack/](https://blog.csiro.au/australian-insects-potential-new-snack/)

NFF & KPMG reveal opportunities to unlock new income for farmers

The National Farmers' Federation (NFF) and KPMG Australia (KPMG) today released research showing new opportunities for farmers to unlock the value of natural capital, such as the land and ecosystems that underpin farm production. The new sustainable finance mechanisms could unlock billions in additional farm income.

The report shows an immediate opportunity to implement sustainable finance instruments in the agricultural sector to provide incentives and rewards to farmers and other landholders for improved environmental outcomes.

Key recommendations are:

- Implement the \$30 million Pilot Agricultural Stewardship Program including supporting a research project to further develop these instruments;
- Establish a \$1 billion National Biodiversity Conservation Trust as per the Craik review recommendations; and
- The development of a National Natural Capital Policy and Government established standards and trading structures.

To read the full story visits <https://www.nff.org.au/read/6669/nff-kpmg-reveal-opportunities-unlock-new.html>

Land for Wildlife



Blinky Drinkers

It's thirsty work out there and our critters need some help! Linda from Bangalow Koala's has access to these 'Blinky Drinkers'. They do require a commitment to keep them full of water so perfect for our Landcare groups ☺ or individuals who know of koala's / wildlife on their property and want to help. These drinkers are also used by birds, reptiles and other critters so not just useful for koala's.

Please get in touch with Linda directly to organise.

Linda Sparrow,

Mobile number: 0411 491 991 **Phone:** 02-6687 2760

email: twodogsmedia@optusnet.com.au

Website: www.bangalowkoalas.com.au



**I SPY
KOALA**



Recording Koala Sightings

The new app **I Spy Koala** allows community members to record their sightings of koalas in the wild.

App users can enter information about the location and condition of the koala, as well as photos and other information.

Data from the app will be available for access through the interactive NSW Government Sharing and Enabling Environmental Data (SEED) portal. The SEED Portal was developed with and for the community of NSW as a central place for everyone to find data about the environment.

Reporting koala sightings is essential to help koalas in the wild. Better information about koalas leads to better koala conservation and better planning decisions.

The app is available for download for Apple and Android devices.

[VISIT THE APPLE APP STORE](#)

[VISIT THE GOOGLE PLAY STORE](#)

**Important: If you see an injured koala, please call
Friend of the Koala 24hr emergency help line on 6622 1233.**

A healthy koala



Healthy koalas have a thick, grey coat with white markings, bright eyes and a rounded full belly. They respond when startled, spend most of their time high in trees (not necessarily a koala food tree), move and climb well and have no discharge from their eyes, nose, mouth, ears or cloaca. Healthy koalas have a pleasant koala smell and being wild animals, will bite and scratch if handled by humans. If they're on their own and larger than a soccer ball, they're adults. Koalas smaller than this on their own may be orphans and need to be looked at by an experienced koala rehabilitator.

A sick, injured or orphan koala



Sick koalas can have red, swollen, pussy or crusty eyes, fur loss anywhere on their body, brown, stained rumps, an unpleasant smell, and their fur is often dry brown or matted. They often have discharges from their mouths, ears, eyes or cloacas.

If sick or injured, their overall body condition is poor. They're often slow to respond, if at all, to humans and can be touched without responding. They are generally found low to the ground or on the ground except when moving between trees, and can stay in the same tree without moving for more than a few days. Their gait is abnormal or uneven, and they can be disorientated, walking in circles. Some injuries, such as bleeding from any part of their body or broken bones are obvious. However, some injuries, such

as dog bites, are often not visible, but if there are dogs in the vicinity there's always a chance that the dog (no matter how small) has bitten a koala. In these cases you should call our Rescue Hotline on 6622 1233 immediately as unless even a small puncture is treated within twelve hours the animal will probably die. Koalas smaller than a soccer ball when curled up may be orphans, and need to be assessed by an experienced koala rehabilitator. Pouch or back young koala orphans, where the mother has been killed by a dog or car, need to be placed with an experienced koala rehabilitator immediately.

A koala sitting on the ground, unresponsive to what is around it, is a very sick koala and needs attention IMMEDIATELY. Call our Rescue hotline (6622 1233)

Myrtle Rust threat by Marion Riordan, Tweed Landcare

Myrtle rust is a disease caused by the exotic fungus *Austropuccinia psidii*. It threatens over 500 species in the Myrtaceae family including eucalypts, lilly pillies, bottlebrushes, paperbarks and more. The disease can cause deformed leaves, heavy defoliation of branches, reduced fertility, dieback, stunted growth, and plant death. It can lead to the extinction of some species in the wild, and the slow decline in others. Native guava (*Rhodomyrtus psidioides*) and scrub turpentine (*Rhodamnia rubescens*) are two of the four tree species most at risk from myrtle rust and two of three species now classified as Critically Endangered in NSW. These species were once common in Byron.



Left: Tell tale yellow “Myrtle rust spots” – preventing the tree’s fruiting & seeding.

Right: Bare twigs at branch ends indicating imminent death of tree

A new ‘Saving Our Species’ program is aiming to address this devastating disease.

- Track the declines caused by Myrtle Rust
- Find ways to avoid spreading Myrtle Rust to new regions of Australia
- Collect and ‘quarantine’ critical species
- Research for possible ‘rust resistance’ to create resilient genotypes

THIS IS AN ENORMOUS TASK with very little current funding. The project will rely on “crowd-sourcing” for much of the on-ground observations and data collection.

Please contact Alison aratcliffe@byron.nsw.gov.au if you have seen any surviving patches of Scrub Turpentine or Native Guava that are healthy and not showing signs of Myrtle Rust or if you see any plants coming into seed.

FUNDING

Do you have a great project and need funds to make it happen?

You can find more information on available grants on the Brunswick Valley Landcare website including a calendar of all grants expected to be available during 2019. There are also some handy tips on how to be successful with grant applications. Below is a summary of grants which are currently accepting applications and ones that are anticipated to open within the next month.

<http://brunswickvalleylandcare.org.au/funding/>

Climate Change Community Grants Scheme



AdaptNSW

Understanding and adapting to climate change in New South Wales

\$600,000 in 1 round of grants, with grants between \$10,000 and \$30,000 available for individual projects. **Applications are open from now until 31 January 2020.**

<https://climatechange.environment.nsw.gov.au/Adapting-to-climate-change/Community-Grants>

Southern Cross Credit Union



SOUTHERN CROSS CREDIT UNION

The Southern Cross Credit Union are providing 3 x \$5,000 grants to help support local organisations, community groups and teams.

Through this Community Grants initiative they provide funding for organisations working on a project or event that benefits our local communities in one of the following areas:

1. -Art and culture;
2. -Education;
3. -Sport and recreation;
4. -Environment; and
5. -Health and well-being.

No closing date advertised. For more information visit - <https://www.sccu.com.au/community/community-grants/>

Our Marine Parks Round Two

This grant round is dedicated to groups and sectors that have an interest in how parks are managed and the capability and capacity to assist the Director of National Parks with this task. Up to \$6 million is available from 2020-21 to 2021-22. The minimum grant amount is \$30,000 and the maximum grant amount is \$500,000. Applications close **28 February 2020.**

<https://www.communitygrants.gov.au/grants/our-marine-parks-round-two>



Community Conservation Grants

Applications for the Foundation for National Parks & Wildlife Community Conservation Grants are now open! The purpose of the grants is to assist in the protection of our native species, habitats, landscapes and cultural heritage. Applications close on **14 February 2020.**

<https://www.fnpw.org.au/grants/conservation-project-grants>



Weeds of the Month

This month's weed of the month is Giant Devils Fig
(*Solanum chrysotrichum*)

Giant devil's fig is a shrub or small tree. Its berries are spread by animals into riparian and forest areas.

Biosecurity duty: This plant should not be sold in parts of NSW

Exclusion zone: whole region excluding the core infestation area of Richmond Valley Council, Ballina Shire Council, Lismore Council, Kyogle Council, Byron Shire Council and Tweed Shire Council

How does this weed affect you? Giant devil's fig is an environmental weed of riparian areas, forests and roadsides in NSW and Queensland.

What does it look like? Giant devil's fig is a shrub or small tree to 4 m. It has prickly stems and leaves, a tomato-like flower and orange-yellow berries.

For technical advice and assistance with identification please [contact](#) your **local council weeds officer**.

For further information call the **NSW DPI Biosecurity Helpline** on **1800 680 244** or send an email to weeds@dpi.nsw.gov.au



Tropical soda apple still a significant threat during drought

Rous County Council is reminding all Northern Rivers' landholders and land managers of their responsibility to control and help eliminate the current weed biosecurity threat posed by Tropical soda apple (*Solanum viarum*). Tropical soda apple is a highly invasive weed that can have devastating impacts on local agriculture, farming and native bushland areas.

Rous staff are available to work closely with landholders to help identify, control and eliminate Tropical soda apple.

"Even though we are in drought, Tropical soda apple still is a high risk weed in the Northern Rivers region," said weed biosecurity extension officer, Kim Curtis.

"The advantage of the plants being drought effected is they are much easier to cut and swab when there is less prickly foliage to restrict access to the plants stem."

The *Biosecurity (Tropical Soda Apple) Control Order 2017* was introduced with the key aim of eliminating the weed and its associated biosecurity risks in this region.

The requirements and other obligations of landholders in the local government areas of Ballina, Lismore, Richmond Valley, Byron, Kyogle and Tweed include:

- **Notifying Rous County Council as soon as practicable after they become aware of a new infestation of Tropical soda apple on their property**
- **Destroying all Tropical soda apple on their land**
- **Keeping their property free of Tropical soda apple**
- **Ensuring Tropical soda apple plants (including any seeds) are not inadvertently transported from their property via stock, machinery, fodder or other means.**

Any landowners that may be unsure as to whether they have Tropical soda apple on their property, or how to deal with it, are encouraged to contact Rous County Council's expert Weed www.rous.nsw.gov.au.



WORKING BEES - why not get out and get involved in one of our local groups?

For all Landcare Working Bees please wear protective clothing - long pants, long-sleeved shirt, closed-in shoes, hat, gloves and bring water, sunscreen, and insect repellent. **Please always contact the groups co-ordinators before attending a working bee as plans do change!**

Bangalow Land and Rivercare, Bangalow

WHEN: every Saturday 8:30am
WHERE: find out from Liz Gander
CONTACT: Liz Gander bangalowlandcare@gmail.com 66871309

Green and Clean Awareness Team, Byron Bay

WHEN: 3rd Sunday of the month 9:00am
WHERE: Meet Main Beach, Byron Bay
CONTACT: Veda Turner vedaturner@gmail.com 0427 857 991

Heritage Park Landcare, Mullumbimby

WHEN: alternate Saturdays 9:00am – 11:00 am
WHERE: Heritage Park, Mullumbimby
CONTACT: Diana Hughes bromspot@gmail.com

Jinangong Landcare, Ocean Shores

WHEN: 1st Sunday of the month
WHERE: The Tunnel Road, Ocean Shores
CONTACT: Ian Parer ianparer@hotmail.com

Mullum Town Landcare, Mullumbimby

WHEN: last Sunday of the month
WHERE: find out from Rita de Heer
CONTACT: Rita de Heer 02 6684 1495 ritadeheer7@gmail.com

Ocean Shores Landcare, Ocean Shores

WHEN: each Friday at 8.30 – 11.00 am (8.00am DST)
WHERE: corner of Yallakool Drive and Warrambool Road, Ocean Shores
CONTACT: David Kemp dnkemp77@gmail.com 0427 650 861

South New Brighton Dunecare

WHEN: 1st Friday of the month 1:30pm - 4:30pm
WHERE: Meet at southern end of the Esplanade at the Strand beach access point.
CONTACT: Robyn Bolden robyn.bolden@optusnet.com.au 6680 1970

Suffolk Park Dunecare

WHEN: 1st Saturday of the month
CONTACT: Helen Brown hellyh@bigpond.com 6685 4964

Tyagarah Landcare

WHEN: Each Thursday 9:00am – 11:00am
WHERE: 23 Prestons Lane, Tyagarah
CONTACT: Bela Allen bela_allen@yahoo.com 6684 7113

Can't find a group near you? We have many other groups who meet on an ad hoc basis (contact us for more details) or if there isn't an existing group in your neighbourhood or you are interested in looking after a particular area, BVL can help you to form a locality group under the BVL umbrella.

LINKS

- Arakwal <http://arakwal.com.au/>
 - Border Rangers Alliance <http://www.greasternranges.org.au/border-ranges/overview/overview>
 - Bangalow River and Landcare <http://www.bangalowlandcare.org.au/>
 - Big Scrub Landcare <https://www.bigscrubrainforest.org.au/>
 - Brunswick Valley Landcare <http://www.brunswickvalleylandcare.org.au/>
 - Byron Bird Buddies <http://www.byronbirdbuddies.com.au/>
 - Byron Community College <http://www.byroncollege.org.au/>
 - Byron Shire Council <http://www.byron.nsw.gov.au/>
 - EnviTE www.envite.org.au
 - Environmental Trust <http://www.environment.nsw.gov.au/grants/envtrust.htm>
 - Friends of the Koala www.friendsofthekoala.org
 - Local Land Services www.northcoast.ils.nsw.gov.au
 - North Coast Local Land Services <http://northcoast.ils.nsw.gov.au/>
 - Border Ranges Richmond Valley Landcare www.brrvln.org.au
 - Mullumbimby Community Gardens <http://mullumcommunitygarden.wordpress.com/>
 - North Coast Nature <http://www.northcoastnature.org.au/>
 - Richmond Landcare Inc. <http://www.richmondlandcare.org/>
 - Rous County Council (formerly Far North Coast Weeds) <http://rous.nsw.gov.au/>
 - Soilcare <http://www.soilcare.org>
 - Tweed Landcare Inc. <http://www.tweedlandcare.org.au/>
 - Wilson's Creek Huonbrook Landcare <http://www.wilsonscreeklandcare.mullum.com.au/>
-

For information about Landcare or other natural resource issues in Byron shire please contact

Landcare Support Officer

Alison Ratcliffe 6626 7028 0421 244 640 (Monday, Thursday and Friday)

email: aratcliffe@byron.nsw.gov.au



This newsletter is supported by Byron Shire Council.

