




Newsletter for Landcare and Dunecare in Byron Shire

<http://www.brunswickvalleylandcare.org.au/>

 Connect on facebook

February 2016

FEBRUARY	26	Fire for Healthy Habitats Workshop
MARCH	6	Clean Up Australia Day in Mullumbimby
	14	Ecological Tree Planting and Weed Control Techniques Field Day
APRIL	2	Environmental Story Telling workshop with Jenny Carghill
	9	Ocean Shores Community Tree Planting

Wildly Enthusiastic about Nest Boxes

by Rita de Heer

The nestbox monitoring done at the end of November 2015 proved that local creatures were, and are, wildly enthusiastic about the nestboxes being installed. Accompanying these few words – a picture is worth a thousand words after all – are the photos that tell the story.



In one a wood duck mother on a nest of at least three eggs. Wood ducks do nest this high up. The landowner assures us the eggs hatched, and the ducklings made it safely to the ground.



Three boxes had families of feathertail gliders at home, while an additional three boxes had nests of gum leaves arranged in a pattern specific to feathertail gliders. These are dreys (overnight camps) being established in a couple of territories. They can use up to 6 hollows/boxes in their home range.



At one box, high in the ranges, a surprised possum leapt from the box under the hands of Nick Sanderson.

At another place down on the lowlands, Mark Evans surprised an owlet nightjar which stayed to supervise from a nearby branch.



A number of boxes house ants at present. We haven't decided what to do about these, or whether we'll do anything. Interestingly, three different



species are in residence producing three different types of nests.

One box had a sketchy nest, with plastic among the nesting materials. As Nick approached with the camera, an unidentified bird which they think might've been an Indian Mynah flew away.

On the 29th November 2015 you may recall we had a fierce storm. Monitoring of all the nestboxes was carried out the next day. Three large spiders found





bat-boxes a welcome port that night. One bat-box sports the mud abode of a large hornet. No micro-bats have yet been found in residence.

One box was perhaps inspected as a potential home with evidence of scratches on the doorstep.

Some people, when I tell them these results, get a bit upset at my welcoming attitude towards ants and spiders using the boxes. I tell them that one big old tree might have had a hundred hollows in it of all different sizes. Ants and spiders are hollow dwellers too, though I suspect these particular spiders were sheltering from the inclement weather. But still, where are the loose bits of bark on a ten year old tree that a spider can shelter under? All in all, 60% of the 35 boxes in the program in November 2015 showed signs of use. *Update on the Nestboxes for Wildlife Program, Feb 2016*



FUNDING

Do you have a great project and need funds to make it happen?

You can find more information on available grants on the Brunswick Valley Landcare website including a calendar of all grants expected to be available during 2016. There are also some handy tips on how to be successful with grant applications. Below is a summary of grants which are currently accepting applications and ones that are anticipated to open within the next month.

<http://brunswickvalleylandcare.org.au/funding/>

Foundation for National Parks and Wildlife Grants

The Private Land Conservation Grants Program NSW is now open. It is funded by the Foundation for National Parks & Wildlife and its partner organisations. It provides small grants to support NSW landowners who have a conservation protection mechanism on their land, and for education and training in conservation. The Private Land Conservation Grants Program recognises and supports landholders for activities which enhance the biodiversity conservation value of their registered properties.



Applications Close: **Friday 18 March 2016** <http://fnpw.org.au/foundation-grants/>

Suitable for private landowners with a conservation agreement in place

Lead Environmental Community Groups Program

The Environmental Trust is now calling for applications under the 2016 Round of the LECG Program.



The 2016 round of the program sees a change in timing and structure.

In previous rounds the LECG program provided grants for up to 12 months, which required a 'call for applications' every year. To reduce the administrative burden for applicants of applying each year, as well as providing longer term security of funding, the 2016 round has been combined with the 2017 and 2018 rounds to offer grant funding for three years through one application process.

The Lead Environmental Community Groups (LECG) Grants Program is aimed at assisting eligible lead environmental community organisations to build the capacity of the NSW community in protecting and conserving our environment by delivering community education and/or capacity building activities.

Applications close on **11 March 2016**. <http://www.environment.nsw.gov.au/grants/Lead.htm>

Suitable for community groups

James N Kirby Foundation Grants

Each year, The Foundation distributes just over \$1,000,000 across four key categories including the environment. When is the opening period for Grant Applications?

Small Grants (\$15,000 or Less) – 1 October to 28 February each year.

Large Grants (More than \$15,000 – Stage 1) – 1 October to 30 November each year.

Large Grants (More than \$15,000 – Stage 2 if eligible) – Mid-December to 28 February each year.

<http://www.kirbyfoundation.com.au/>

Suitable for small projects



Protecting our Places grants

The aim of the Protecting our Places program is to protect land that is culturally significant to Aboriginal people and to support education projects about the environment and its importance in Aboriginal life.



The Protecting of Places program is currently the subject of an independent evaluation review. The next round of the program has been postponed until this evaluation has been completed and the recommendations considered by the Trust. It is envisaged that the next call for applications will be in late 2015/early 2016. Keep an eye on the page below for updates regarding this years grants.

<http://www.environment.nsw.gov.au/grants/pop.htm>

Suitable for Aboriginal projects

NRMA Community Grants - Environment

Initiatives considered will be projects that involve essential revegetation work to protect communities against storm and flood and those that directly engage communities in on-ground activities to address local conservation and biodiversity issues. Projects that educate community members on ways to reduce waste, water and carbon emissions and promote sustainable approaches to rural and urban living will also be considered. It is expected that the 2016 round will be announced in February with the close in March. <https://www.communitygrantsprogram.com.au/>



Suitable for small projects

Coles Junior Landcare Garden Grants

Coles Junior Landcare Garden Grants give \$1,000 to schools and youth groups to help create gardens in their grounds or community, such as bush tucker gardens, water wise gardens or veggie gardens. These programs encourage students to learn about the environment through “outdoor learning” and interaction in developing their own school gardens. All schools, kindergartens, daycare centres, and youth groups (e.g. Scouts) are eligible to apply for a Coles Junior Landcare Garden grant. Last year round one opened in February so keep an eye on the website for further info. <http://www.juniorlandcare.com.au/grants-2/coles-grant>



Suitable for schools and preschools



NORTHERN RIVERS FIRE AND
BIODIVERSITY CONSORTIUM

Fire For Healthy Habitats Workshop

Come along to find out more about the
importance and benefits of:

- Appropriate fire management for biodiversity,
- Local vegetation types and their associated fire regimes,
- Locally relevant threatened species & their response to fire, and
- Approval processes and permits



DATE: 26th February 2016

VENUE: NPWS Arakwal depot,
Byron Bay

TIME: 9:30—3:00

Morning tea and lunch provided

**Managing fire is an important part of better
protecting your assets, managing the land and
increasing biodiversity**

Registration essential by 24th February to Alison Ratcliffe on
6626 7028 or email alison.ratcliffe@byron.nsw.gov.au



National
Landcare
Programme



Nature
Conservation
Council
The voice for
nature in NSW



wildsite
ecological
services



Ecological planting and Weed Control Techniques

Meet the people involved in the ecological restoration of Tyagarah Crown Lands

Date: Saturday March 12

Time: 8.30am to 10.30am

Location: Grays Lane, Tyagarah, Crown Land at Pacific Highway entrance to Grays Lane

Wear: Sunsafe clothes or wet weather gear, covered shoes and mosquito repellent

- ❖ *Join in by planting a tree or two*
- ❖ *Watch a demonstration of Weed control techniques*
- ❖ *Have your questions answered by experienced bush regenerators*
- ❖ *Morning Tea provided*

Enquiries and Registration: Bela Allen: bela_allen@yahoo.com Phone 02 66847 113

For ongoing information about events sign up to receive the monthly newsletter or join Brunswick Valley Landcare <http://www.brunswickvalleylandcare.org.au>



This project is supported by Brunswick Valley Landcare through funding from the Australian Governments National Landcare Programme and Koala Connections Project, Byron Shire Council.



Environmental Storytelling Workshop

Are you searching for a tool to make your **environmental message** vividly memorable and deeply inspiring?

Do you want to **engage your listener's hearts** as well as their minds, but you're not sure how?

If so, this workshop will give you the tools you seek.

When: Saturday, 2 April, 2016

Time: 10.00 am - 4.00 pm

Who: Environmental Educators, Educators, Change-Makers and Parents

Where: Brunswick Heads Community Centre, South Beach Road

How much: \$85 / \$75 concession includes morning tea, but NOT lunch

Presenter: Jenni Cargill-Strong

Video Trailer: <https://www.youtube.com/watch?v=bVCfOUQ2FUw>

Info & Bookings: Alison Ratcliffe 6626 7028 alison.ratcliffe@byron.nsw.gov.au

Presented in partnership between The Story Tree Company & Brunswick Valley Landcare Inc.

www.storytree.com.au

www.brunswickvalleylandcare.org.au



Brunswick Valley
Landcare
Inc.

Please note the change of date, venue and price!



Australian Association of
Bush Regenerators NSW

working with natural processes



EVENTS 2016

Rainforest Tree-Bark-Trunk Workshops

Border Ranges NP and Burleigh Heads NP

Spend time with Peter Poropat who will take participants on a rainforest walk to learn about the bark textures and trunk features of rainforest trees. Peter has written two books on the identification of rainforest trees using these features.

Peter will run one workshop in northern NSW and a second in SE Queensland.

WHEN: Saturday 5th February 2016

TIME: 10am to 2 pm

WHERE: Meet at the Brindle Creek picnic area car park in the Border Ranges National Park, NSW (See map)

WHEN: Saturday 19th February 2016

TIME: 10 am to 1pm

WHERE: Meet at the Jellurgal Cultural Centre carpark near the Tallebudgera river mouth Burleigh Heads, Qld. (Seemap)

BOOKINGS ESSENTIAL!

Email: pgporopat@gmail.com or phone 0434 606 357

Cost of workshop is \$20

All participants will receive a free poster, and Peters books will be for sale
For \$50 for Volumes 1 and 2.



Project Planning Workshop



Perfect a plan, develop an idea or turn a dream into action

Are you involved in a Landcare, Coastcare or a School's Junior Landcare Group?
Are you thinking about the year ahead, and wondering how to make the most of it for your group? Do you have a great idea for a project, but not sure where to start planning?

Meet with RLI's Landcare and Schools Support Officers Hannah and Lyn to begin action planning for the future.

Date: Saturday 20th February 2016
Time: 2 – 4:30pm
Cost: FREE! Afternoon tea provided
Location: North Coast Community College, 494 Bruxner Hwy, Alstonville NSW 2477

**EVENT
POSTPONED &
RELOCATED!**

**Registration
essential!
RSVP by 5pm
17th Feb**



This event is part-funded by the North Coast Local Land Services Landcare Support Program.

For more information:

richmondlandcare.org landcare.support@richmondlandcare.org 02 6619 0115



FREE COMMUNITY WORKSHOP IN CABARITA

How to Have Your Say: NSW Coastal Management reforms

WHEN

6-8pm Monday 8 February 2016

WHERE

Cabarita Beach Sports Club Hall
Les Burger Field, 498 Tweed Coast Road
Bogangar NSW

RSVP

For further information & to RSVP contact
EDO NSW on 9262 6989 or at

www.edonsw.org.au/cabarita2016

Caldera Environment Centre will host a free EDO NSW workshop in Cabarita to explain the new draft framework for coastal management for NSW and how the community can have their say and respond to the reforms.

The workshop will address what the reforms mean for the coastal environment and how the community can get involved.

A light supper will be provided.



- Successful environmental outcomes using the law
- Broad environmental expertise
- Independent and accessible

Ocean Shores Community Planting Day

In conjunction with Byron Shire Council, we will be holding a Community Tree Planting Day at **Yallakool Reserve**, Ocean Shores from **9:00am on Saturday 9th April 2016**.

This follows on from a previous event in April 2014 that saw 330 trees successfully planted, and as these photos show, these trees are now providing a healthy canopy over a previously exposed section of our reserve.



If you are interested in joining us, or were involved 2 years ago and would like to see the results of your good works, we will be meeting at the end of Inderwong Avenue, Ocean Shores (off Rajah Road, just south of the Shopping Centre).

Contact David Kemp on 0427 650 861 for further details.

Workshop for north coast banana growers

North coast banana growers can get the latest information on banana management issues at a workshop hosted by Department of Primary Industries (DPI) and Tweed Brunswick Banana Growers Association.

DPI Banana Industry Development Officer Matt Weinert said the workshop will provide growers with information on a range of topics including Tropical race 4 Panama disease, leaf and soil analysis, nematode identification and management and banana plant nutrition.

“With the recent outbreak of Tropical race 4 Panama disease in north Queensland, this topic is very timely and growers need to be aware of this debilitating disease in order to help protect the NSW banana industry,” Mr Weinert said. “Maintaining best practice is vital for growers and the session on banana plant nutrition will demonstrate the importance of optimal nutrition to maintain high quality production all year round. During the morning there will be an exhibitor’s area, with information available direct from suppliers on a range of topics, machinery, organics, financial advice and succession planning. The workshop provides an opportunity for growers, consultants and members of the horticultural industry to come together, share information, and build industry relationships.”

The workshop will be held on **Wednesday 17 February** from **8.00 am to 12 noon**.

The venue is the Burringbar District Sports Club, Fourth Avenue, Burringbar.

Light refreshments will be provided. To RSVP or for information on the workshop contact Matt Weinert on 0438 644 136 or email matt.weinert@dpi.nsw.gov.au



DPI Banana Industry Development Officer Matt Weinert and Woolgoolga banana grower Jeff Eggins

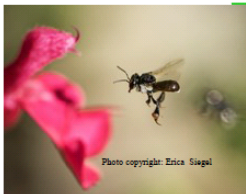


Photo copyright: Erica Siegel

Wednesday February 17th 2016
8:30 am to 5:30 pm
Clarence River Jockey Club
Powell Street Grafton

EXPO Native Stingless Bees

Bee Quick - Limited numbers - Cost \$60

Includes:
Lunch, morning & afternoon tea
Notes & honey tasting
Lucky Door Prize

Australian Stingless Bees

Fun and easy to keep - great for our gardens and the environment.

Get the Buzz

Learn about hive splitting, honey extraction, log rescues and relocation methods, bee biology, pests and diseases, pollination and bee foraging behaviours, community education programs and how to construct native bee hives.

Promoting the Value of Native Bees in Our Community

Renowned Speakers

Entomologist Dr Tim Heard from Sugarbag, Russell & Janine Zabel from Aussie Stingless Bees, Steve Maginnity from Steve's Bees and local experts from Clarence Native Bees.

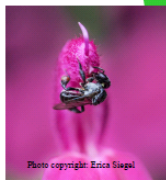


Photo copyright: Erica Siegel

Raffle Prizes
Stocked Bee Hive
100 Native Plants
DVD & Books

TICKETS
MAKE
GREAT
CHRISTMAS
GIFTS

For Sale

Books, DVD's, Limited number of Stocked Bee Hives may be available (expressions of interest will be taken during the registration process)

RSVP by 24.12.2015
Ken & Carole Faulkner,
Ph: 6643 3750
Mob: 0418 495 460
or email Jo Wearing
wbjml@igpond.com

NSW Sustainable Horse Keeping Conference

DATE: Saturday, 7 May 2016
VENUE: University of Western Sydney, Hawkesbury
WHO: Suitable for horse property managers and owners, NRM officers, local government planners, educators, lecturers, coaches, agisters and Landcare leaders.

A conference covering all aspects of sustainable horse management. This is a forum for horse property owners and industry representatives to access the latest expert advice to benefit both your land and your animal. Featuring presentations from international guest speakers as well as home grown Olympic Champion Stuart Tinney, the event is aimed at empowering people to implement new practices that will mean better land management and happier, healthier horses.

Guest Speakers and Topics

Olympian, **STUART TINNEY**

- Talking about the Olympics
- Managing horses on his property and what are the challenges?
- No two farms are ever the same!

International expert, **ALAYNE BLICKLE (USA)**

- Soils and what they mean to you
- Manure management and composting
- Sustainable pasture establishment and management
- On-farm water

DR MARIETTE VAN DER BERG

- Forage behaviour and animal health
- Feeding and nutrition
- Property design
- Parasiticide and what it means?
- Grazing management
- Animal welfare issues

GINA & DAVID SYKES

- Horses in herds
- Pasture rotation
- Exercise
- What can agisters do to improve conditions for their horses

Guest speaker, ILS Vet (TDA)

- Why vaccinate against Hendra?
- POC?
- Parasite management
- Teeth and feet
- Horse travel movements

Visit <http://greater Sydney.ils.nsw.gov.au/resource-hub/events/2015/sustainable-horsekeeping-nsw> for more information or email events.greatersydney@ils.nsw.gov.au

Early bird ticket deals available!

Understanding our Soils



Local Land
Services
North Coast

The new North Coast Local Land Services project *Understanding Our Soils* is starting soon. Delivered by Judi Earl and Lewis Kahn of AIMS, with funding provided by the National Landcare Programme, the project is designed to help land managers better understand their soil and provide options for improving soil health and productivity.

Judi Earl said of the project, "AIMS main area of interest is working with land managers to enhance the condition and productivity of their land through better understanding ecosystem function and more effective utilisation of available resources."

The project will provide

- discounted soil tests and interpretation of results
- understanding of the importance of soil biology and how to improve it
- management options to improve soil structure and water holding capacity
- methods to monitor soil health and productivity
- opportunity to work in a group environment to address locally specific issues

Aside from costs associated with soil testing there is no fee to participate.

The project is for land managers in the Richmond, Brunswick and Tweed who are looking to improve their land health and productivity with a strategic approach to soil management.

The first group sessions will be held at the following times and venues

Wednesday 3 February at 1.00 pm in Casino

Wednesday 10 February at 1.00 pm in Alstonville

Thursday 11 February at 9.00 am in Murwillumbah



There are a limited number of spaces available. Don't miss the opportunity to come along to one of the meetings listed above to find out more about the program. Topics to be covered at these first sessions include why healthy soil is the basis of healthy landscapes and agricultural production, the purpose of soil testing and appropriate methods to collect soil samples for analysis.

Throughout the program participants will learn more about the features of their soils and soils of the region, including physical, chemical and biological characteristics. Practices to enhance all aspects of soil health, maximise water holding capacity and improve the resilience of your land will also be addressed.

Kel Langfield, Land Services Officer for North Coast Local Land Services said, "Increasing your knowledge on soils and soil management will help deliver better outcomes relating to soil properties and increase productivity and profitability."

For more information about the project and meeting venues, interested landholders are encouraged to contact Judi Earl by email to judi@aimsag.com.au or by phone 0409 151 969 <http://aimsag.com.au/>





Come on Australia - Let's Go

Celebrate Clean Up Australia Day with us!

Byron Shire Council and Brunswick Valley Landcare will be celebrating Clean Up Australia Day with a walk along the riverbank in Mullumbimby on **Sunday 6th March**.

Meet at: **10.00** am in **Pool Park**, behind the Mullumbimby Swimming Pool on Jubilee Avenue, Mullumbimby. We will finish at 12.30 in Heritage Park with a BBQ lunch. Register your interest at <http://www.cleanupaustraliaday.org.au/Mullumbimby+Creek>. To find out more please contact Lucy Wilson lucy.wilson@byron.nsw.gov.au

The Vertebrate Pest Induction

North Coast Local Land Services is offering free training to landholders on how to control pest species on their property. The Vertebrate Pest Induction Training (VPIT) course is available to landholders to facilitate the use of 1080 and Pindone baits on their properties.

Wild dogs are considered a serious pest in Australia attacking livestock and native animals, potentially spreading diseases and threatening human health, safety and wellbeing. Wild dog attacks on livestock and pets, lethal or otherwise, also cause emotional distress to landholders.

Dean Chamberlain, Team Leader Invasive Species, said, "Capacity building for local landholders is important for wild dog control and we're offering training to ensure landholders are appropriately skilled."

"Recognising the importance of working collaboratively, local landholders are encouraged to participate in training courses such as these and provide input into options and strategies for local wild dog management and control," Dean said.

The three hour VPIT course is being offered in both Lismore and Casino in February and gives landholders a clear understanding of 1080 and Pindone use and the legal obligations that apply.

The training is delivered by Biosecurity Officers from North Coast Local Land Services and covers topics such as baiting techniques, toxicity, storage, transport, legislation and OH&S. On completion of this course participants will be issued a certification card and remain accredited to use 1080 and Pindone for five years.

North Coast Local Land Services can now also provide training in the recently registered Canid Pest Ejector which are mechanical devices that deliver a precise dose of the 1080 when activated by foxes and wild dogs.

Canid Pest Ejectors have a benefit of remaining lethal until activated as the toxicant is protected within a capsule, allowing them to be left in the field for longer periods of time and cannot be removed and cached by foxes, making a control program safer for non target animals.

The Canid Pest Ejector course is an additional unit for landholders wanting to gain accreditation in the use of the device and landholders can enrol in the course once they have completed the VPIT training. The Canid Pest Ejector training is "one off" training with no expiry.

The Vertebrate Pest Induction Course is being held in **Casino** on **Thursday, 11 February** and in **Lismore** on **Thursday, 18 February**. Both courses commence at 9.00 am and finish at 12.00 pm. Participants must register by contacting North Coast Local Land Services on 6623 3900.



Local Land
Services
North Coast

Aboriginal Community Advisory Group

North Coast Local Land Services (NCLLS) is establishing an Aboriginal Community Advisory Group (ACAG) to assist in the delivery of services to Aboriginal communities of the North Coast, as well as support the implementation of the NCLLS Aboriginal Engagement Strategy.



Local Land
Services
North Coast

Expressions of Interest are currently being accepted to sit on the Aboriginal Community Advisory Group.

To find out more, [contact Barry Williams](#), NCLLS Senior Land Services Officer - Aboriginal Communities (0427 234 048)

Click here for the [ACAG Terms of Reference](#)

Click here for the [NCLLS Aboriginal Engagement Strategy](#)

Click here for the [EOI form](#)

Expressions of Interest for the ACAG are to be submitted by close of business Friday 19th February 2016.

Calling for 2016 Sustainability Seminar Program Items

Has your community group got a great sustainability message to get out there? Each year Byron Shire Council partners with community groups to help them host a topical Sustainability Seminar. The evening seminar can be a film screening, key note address or panel discussion depending on the style of message you are trying to get out.

Council provides support by way of:

- Free venue hire (Council Chamber Mullumbimby)

- Free graphic design and some printing of posters and flyers

- Free advertisement in the newspaper the week prior to the event

To submit an expression of interest to the 2016 Sustainability Seminar program please complete the attached [application form](#) and email to sustainability@byron.nsw.gov.au by **Friday 12 February 2015**, please note extension of application date.

The poster features a teal background with a white stylized wave logo on the left and a circular seal on the right. The text is white and green. At the bottom, there are four circular images: a basket of fresh produce, a bird in flight, a solar panel array, and a close-up of green leaves.

2016 Sustainability Seminar Series
Applications to present now open

Byron Shire Council is seeking expressions of interest from community organisations who would like to participate in the

2016 Sustainability Seminar Series

Get your sustainability message out there by running a film screening, forum or key note speaker event. Venue and promotion supplied by Council

Visit www.byron.nsw.gov.au/sustainability or call 6626 7305 for more information and an application form.
Applications close Friday 5 February 2016

Feral Animal Program

Byron Shire Council's feral animal program has recommenced and is focussed on professional trapping of wild dogs, foxes and feral cats. The professional trapping program has been running for several years and has been well supported by landholders across the shire. Byron Shire landholders experiencing impacts from feral animals on their property are invited to register their interest with Byron Shire Council. The program is more effective if

adjoining neighbours work together. Participating landholders are required to contribute towards the cost for any feral dogs, cats and foxes trapped by professional trappers on their property. If you would like to register your interest please call Byron Shire Council 6626 7068.

It is also important to ensure that domestic animals are cared for responsibly and are not left to roam. Domestic animals can have a significant impact on wildlife with dogs being responsible for many koala deaths each year. Even a bite from a small dog can cause infection that leads to death. Cats are known to prey on birds, lizards and small mammals, and should have a bell attached to their collar and be kept inside at night and not left to roam unchecked.

What else can I do?

Indian Myna control is also part of the program. Traps and assistance are available from Byron Shire Council, phone 6626 7068.

All wild dog sightings should be reported to Council on 6626 7000 and Local Land Services on 6621 2317. Byron Shire Council also has cage traps available for landowners to capture stray cats and foxes on their property. A trap can be borrowed from the Byron Shire Depot office; phone 6685 9300. The trapping program is subsidised through funding allocated towards feral animal management as part of the commonwealth government funded Koala Connections program.

For more information Jo Green 6626 7068 joanne.Green@byron.nsw.gov.au



Predation by feral cats and foxes presents a major threat to Australian wildlife. Management ranges from construction of predator-free enclosures to culling of predators. Photo: Chris Tzaros

Protected in Perpetuity

Need some inspiration for your property? Local landcarer Stephanie Lymburner recently told her family's story to the team at ABC North Coast, and my what a story it is! Crystal Hill was purchase by Stephanie's mother a Di Mercer in 1968 with the vision to return it to native forest from a steep hillside covered in Lantana and Camphor Laurels. Stephanie and Julian moved up from Sydney in 1993 and have been working to restore it since then. It is now finished and

thanks to a conservation agreement it can now never be cleared. Read the story [here](#). Story first published 15/01/2016 on <http://www.abc.net.au>



Photo: Stephanie Lymburner sits amongst some of the birds nest ferns in the rainforest she restored on her late mother's property. (Pic: ABC North Coast, Samantha Turnbull

Indian Myna

The **Indian Myna** is a highly intelligent and aggressive bird that successfully competes with our native species for food and nesting sites. **Indian Mynas** nest in hollows, often evicting small mammals such as sugar gliders. This negatively impacts on the number of hollows available to native birds such as Rosellas, Lorikeets, Glossy Black Cockatoo, Brown Tree creeper.



42% of Australian mammals use tree hollows.



They even evict large more aggressive species like Kookaburras and Dollar birds and will destroy eggs and chicks of other birds.

Once a nest site is abandoned by **Indian Mynas**, native species will avoid the hollow for a number of years.

If left to colonise these birds will quickly become the dominant species.

Trapping of Indian Mynas is occurring through out the Byron Shire. ***If you see a trap, please do not disturb the birds inside***

and please keep domestic pets away.

Noisy Miners are sometimes confused with the Indian Mynas.

The native Noisy Myna (*Manorina melanocephala*) has a predominantly grey body, as in the photo to the right. The Indian Myna is chocolate brown with a black head and neck, as in the photos above. The Indian Myna walks rather than hops, often on the ground along roadsides.

If you would like to participate please contact

Byron Shire Council 66267000.

All information was sourced from Wetland Care Australia



Photo Credit: Richard Major, Australian Museum

6th National NRM Knowledge Conference Announced



The 6th National NRM Knowledge Conference is to be held 6th-8th June 2016, at the Novotel Pacific Bay Resort, Coffs Harbour, NSW.

The Conference will bring together regional NRM organisations from around Australia, along with NRM practitioners from Australian and State/Territory agencies and non-government organisations, to share knowledge and experiences in Natural Resource Management.

The theme for this year's conference is "People, Planet and Profits". The call for Abstracts is now open. Find out more [here](#).

Attention budding Landcare writers Landcare in Focus is looking for new contributors



We are currently seeking submissions of stories on your successes and learning opportunities, for our quarterly publication *Landcare in Focus*.

The publication is distributed through the Fairfax Community News and Rural Press Networks and has a wide readership of over 350,000 – which provides you a great opportunity to have your story heard around Australia.

The deadline for the next issue is just a week away, so your articles or ideas need to be submitted soon. Publication dates, content themes, and submission deadlines for the next three issues are as follows:

Edition	Content theme / topic	Submission deadline
April (special edition technical supplement)	Drought Resilience Send us your stories, tips or how-to articles for making the land, or agricultural practices more resilient to the effects of drought	4 March
May	Revegetation and integration of biodiversity with food/fibre production Tell us your tales of revegetation to increase or reintroduce native biodiversity in and around agricultural sites	8 April

All article submissions must adhere to the following guidelines:

One article of between 150-600 words saved as a Microsoft Word document or a PDF.

At least 1 and no more than 2 or 3 high resolution (must be at least 1MB in size and more than 300dpi) images that clearly illustrate the accompanying article. Full captions for each attached image that explain who is in the photos and/or what they illustrate. Also, please ensure that we have permission to publish from any people appearing in the photos.

Think you've got a tale to tell? Then pitch us your idea, or submit an article by emailing enquiries@landcareaustralia.com.au

* Please note that due to space restrictions we cannot guarantee that all submissions will be included.



Change your thinking, consider a native shelter belt

We know that farmers care about their businesses and the livestock they manage. They care about the land on which they farm, both for its current income and sustainable future. And they care about how those factors combine to provide an income to support their family, community, and environment.

Countless hours and dollars are given over to buffering the effects of weather on livestock and crops. It would therefore seem an obvious choice for farmers to develop assets on farm that reduce the effects of heat or cold on stock.

Sufficient shade and shelter for Australian livestock and pasture crops has been highlighted as a critical risk by all of the major Australian agricultural strategies produced in the past year.

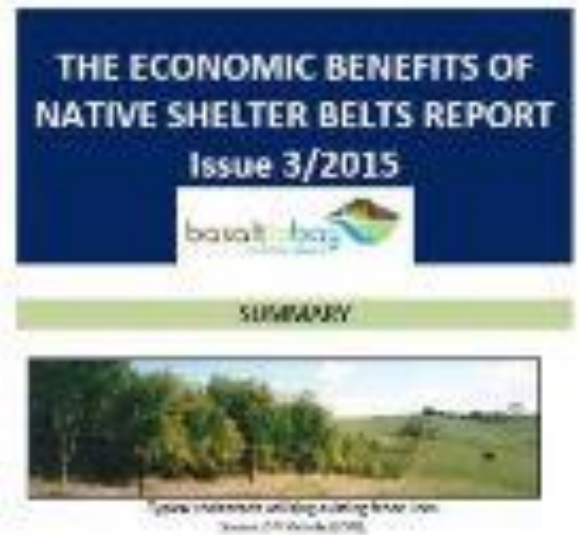
But do land managers have the right information available to challenge their current methods of land management? Do they have the tools to help them understand, calculate and decide how to reintroduce shade and shelter built from native species in a manner beneficial to both farm and ecosystem?

Land managers across Australia have been provided free access to a short report which collates knowledge and experience gathered by both researchers and the agricultural industry that debunks the notion that planting shade and shelter is a loss of productive land.



The Economic Benefits of Native Shelter Belts Report (EBONS) Issue 3 / 2015 was produced for The Basalt to Bay Landcare Network to provide the agricultural industry and individual land managers with an educational resource that could potentially bring about changes in thinking and practice.

To download your copy of the EBONS report click [here](#).



National Standards for Ecological Restoration

The Society for Ecological Restoration Australasia (SERA) is pleased to announce the public exhibition of the final draft of the National Standards for Ecological Restoration. The Standards have been designed to encourage all restoration and rehabilitation projects in Australia to reach their highest potential.

Comments to be emailed to tein.mcdonald@seraustralasia.com.au by 15 February, 2016. (Earlier submission is encouraged.) Find out more or get the Draft Standards [here](#)



Australian Soil Classification online and in print

CSIRO has released the second edition of the Australian Soil Classification. It is available free online, and a print version can be brought from CSIRO Publishing.

http://www.clw.csiro.au/aclep/asc_re_on_line_V2/soilhome.htm

Protect small patches of vegetation

Research into Australian vegetation communities has found that at least 22% of major vegetation communities in Australia have more than 50% of their remaining extent in patches of less than 1000 ha. For many communities, protecting and managing small patches is crucial for their persistence.

<http://onlinelibrary.wiley.com/doi/10.1111/1365-2664.12547/abstract>

Intact ecosystems are best climate change defence

Functioning and intact forests, grasslands, wetlands and coral reefs represent our greatest protection against floods and storms according to new Australian research. Adaptation strategies such as using conservation reserves to feed livestock, and clearing forests for agriculture in response to drought, may have a negative impact on nature which in turn will impact people in the long-term.

<http://www.sciencedaily.com/releases/2016/01/160128113840.htm>



Aleman grass



Aleman grass (*Echinochloa polystachya*) is a class 2 noxious weed species detected in NSW, with the only known infestations recorded here in the Far North Coast region.

Aleman grass is highly invasive and has the ability to close out vast areas of open water, particularly in wetland areas, threatening the habitat of many native species. It can invade creek banks, swamps, dams and low-lying areas of water-logged soil.

It produces abundant vegetative growth in wet conditions; in drier times like drought, this could lead to an increased risk of fire due to increased fuel load.

The root system is very dense and can grow as deep as 2m in water, capable of blocking fish access and other aquatic life. Dense infestations of Aleman grass can also lead to a buildup of rotting organic material in water, creating stagnant water and reduced dissolved oxygen levels.

Aleman grass is approximately 1-2.5m tall, has flat green leaves that are 20-60cm long, 1-1.5cm wide and are pointed at the apex. The flowers are light green panicles 15-25cm long.

If you believe you have seen an Aleman grass infestation, please contact FNCW on 6623 3833 for positive identification and control assistance.



Weed of the Month

This month's weed of the month is Cocos Palm or Queen Palm *Syagrus romanzoffiana* (*Syagrus romanzoffianum*, *Arecastrum romanzoffianum*).

It originates from Brazil and is a large palm, commonly 10 to 15 metres tall with a single, straight trunk and slightly plumose (feathery) leaves. The fruit are orange and fleshy and form in a large cluster.

The flower in Winter to Spring and fruit in Spring, although one in a neighbour's garden was happily fruiting all through December. It is incredibly invasive and competes with and displaces native species. The fruit are also toxic to wildlife! It was widely planted in gardens and is spreading into many vegetation types.

The seeds are dispersed by birds or bats and dumped garden rubbish.

Similar Native Species are the Cabbage Tree Palm *Livistona australis*, when young, has more of a petiole and quickly shows leaf divisions and spines.



For more information on how to control these weeds and other weeds in the shire please visit the Byron Shire Council website and you will find weed profile sheets:

<http://www.byron.nsw.gov.au/weed-profiles>



WORKING BEES - why not get out and get involved in one of our local groups?

For all Landcare Working Bees please wear protective clothing - long pants, long-sleeved shirt, closed-in shoes, hat, gloves and bring water, sunscreen, and insect repellent. **Please always contact the groups co-ordinators before attending a working bee as plans do change!**

Brunswick Heads Dunecare

WHEN: 4th Sunday of the month 8:00am – 11:00am
WHERE: Meet between the rock wall and the surf club
CONTACT: Jordan Moore brunswickheadsdunecare@gmail.com 0413 962 468 txt mess pls

East Yallakool Landcare, Ocean Shores

WHEN: each Wednesday 8:00am – 11:00 am
WHERE: Inderwong Avenue, Ocean Shores (adjacent to the footbridge)
CONTACT: David Kemp dnkemp77@gmail.com 0427 650 861

Green and Clean Awareness Team, Byron Bay

WHEN: 3rd Sunday of the month 9:00am
WHERE: Meet Main Beach, Byron Bay
CONTACT: Veda Turner vedaturner@gmail.com 0427 857 991

Heritage Park Landcare, Mullumbimby

WHEN: alternate Saturdays 9:00am – 11:00 am
WHERE: Heritage Park, Mullumbimby
CONTACT: Diana Hughes bromspot@gmail.com

Jinangong Landcare, Ocean Shores

WHEN: 1st Sunday of the month
WHERE: The Tunnel Road, Ocean Shores
CONTACT: Ian Parer ianparer@hotmail.com

Lower Mullum Creek Landcare, Mullumbimby

WHEN: 2nd Sunday of the month
WHERE: Azalea Street Bridge to Riverside Bridge, Mullumbimby
CONTACT: Annie Mullen 0478 517 625 anne@jbailey.info

South New Brighton Dunecare

WHEN: 1st Friday of the month 1:30pm - 4:30pm
WHERE: Meet at southern end of the Esplanade at the Strand beach access point.
CONTACT: Robyn Bolden robyn.bolden@australis.net 6680 1970

Suffolk Park Dunecare

WHEN: 1st Saturday of the month
CONTACT: Helen Brown hellyh@bigpond.com 6685 4964

Tyagarah Landcare

WHEN: Each Thursday 9:00am – 11:00am
WHERE: 23 Prestons Lane, Tyagarah
CONTACT: Bela Allen bela_allen@yahoo.com 6684 7113

LINKS

- Arakwal <http://arakwal.com.au/>
 - Border Rangers Alliance <http://www.greasternranges.org.au/border-ranges/overview/overview>
 - Bangalow River and Landcare <http://www.bangalowlandcare.org.au/>
 - Big Scrub Landcare <https://www.bigscrubrainforest.org.au/>
 - Brunswick Valley Landcare <http://www.brunswickvalleylandcare.org.au/>
 - Byron Bird Buddies <http://www.byronbirdbuddies.com.au/>
 - Byron Community College <http://www.byroncollege.org.au/>
 - Byron Shire Council <http://www.byron.nsw.gov.au/>
 - EnviTE www.envite.org.au
 - Environmental Trust <http://www.environment.nsw.gov.au/grants/envtrust.htm>
 - Ewingsdale Locality Group (BVL) <http://ewingsdale.org.au/#/landcare/4532495308>
 - Far North Coast Weeds <http://fncw.nsw.gov.au/>
 - Friends of the Koala www.friendsofthekoala.org
 - North Coast Local Land Services <http://northcoast.lls.nsw.gov.au/>
 - Northern Landcare Support Services <http://www.nlss.com.au/>
 - Mullumbimby Community Gardens <http://mullumcommunitygarden.wordpress.com/>
 - North Coast nature <http://www.northcoastnature.org.au/>
 - Richmond Landcare Inc. <http://www.richmondlandcare.org/>
 - Soilcare <http://www.soilcare.org>
 - Suffolk Park Locality Group (BVL) www.landcare.nsw.gov.au/groups/suffolk-park-dunecare-group
 - Tweed Landcare Inc. <http://www.tweedlandcare.org.au/>
 - Wilson's Creek Huonbrook Landcare <http://wilsonscreeklandcare.mullum.com.au/>
 - Wetlandcare Australia <http://www.wetlandcare.com.au/index.php>
-

For information about Landcare or other natural resource issues in Byron shire
please contact

Landcare Community Support Officer

Alison Ratcliffe 66267028 (Tuesday and Wednesday)

email: alison.ratcliffe@byron.nsw.gov.au



This newsletter is funded by North Coast Local Land Services and supported by Byron Shire Council.

