




# Newsletter for Landcare and Dunecare in Byron Shire

<http://www.brunswickvalleylandcare.org.au/>

 Connect on facebook

June 2018

## Plant it and they will come by Joanne Green



Just over 4 years ago (April 2014) a team of volunteers from Brays Forest on Blackbutt Lane, Broken Head worked with Byron Shire Council Koala Connections to design and plant a connecting corridor for wildlife especially Koalas.

The main koala food trees planted were Swamp Mahogany and Forest Red Gum with some Flooded Gum and Tallowwood.



Now the first koala has been spotted enjoying a feed of swamp mahogany!!

*Photos: Zetta Michaels*

# OUR KOALAS NEED KOALA WATCHERS

## UNDERSTANDING AND MANAGING KOALA HABITAT

FREE KOALA WORKSHOP  
AND FIELD DAY

Friday 15<sup>th</sup> June 2018

12 pm - 3 pm

Gondwana, Tyagarah



Field Trip to enhance your koala watching skills and learn to identify signs of koalas and koala habitat

Come along and find out:

- How koalas use habitat across the landscape
- What trees and vegetation communities koalas use
- How koalas respond to drought, heatwaves, fires, and storms
- How climate change is and will affect koalas
- What you can do to help support a healthy koala population in your local community

Refreshments provided. **BOOKINGS ESSENTIAL.** If you would like more information or to register for the workshop contact Maria Matthes, Koala Watch Project Officer, on 0467 855 990 or [maria@healinghistory.com.au](mailto:maria@healinghistory.com.au) or Friends of the Koala on 6621 4664 or Bela Allen, Brunswick Valley Landcare on [bela\\_allen@yahoo.com](mailto:bela_allen@yahoo.com)



*This Project has been assisted by the New South Wales Government through its Environmental Trust*



ZERO EMISSIONS BYRON

# THE BIG U-TURN AHEAD

## CALLING AUSTRALIA TO ACTION ON CLIMATE CHANGE

How much time is left before Australian business, industry, government and households reach the peak emissions point of no return? How can we 'chuck a collective Uey' to reduce our emissions in time? What can we do now?



### KEYNOTE SPEAKER

Earth System Scientist  
**Professor Will Steffen**  
from the **Climate Council** and the  
**Stockholm Resilience Centre**



Image Courtesy ANU College of Science

### Byron Theatre

Wed 27 June  
6.30-8.30pm

**MC Mick O'Regan**  
*Q&A with expert panel*

● **Sue Higginson**  
Environmental Law

● **Tony Pfeiffer**  
Renewable Energy

● **Amelia Hicks**  
Grass roots action

● **Simon Clough**  
Democracy in action

### Tickets

**\$15 + Booking Fee**

Book through

**Byron Theatre**

[www.byroncentre.com.au](http://www.byroncentre.com.au)

Enquiries: 02 6687 2244

Email: [zeb@zerobyron.org](mailto:zeb@zerobyron.org)

**zerobyron.org**



# BURRINGBAR RAINFOREST NURSERY

**Sale - Saturday 16th June to Sunday 1st July**

Free BBQ on Sat & Sun each week of the Sale  
Free Lolly guessing competition for kids (& adults too!)  
Free plant giveaways

Celebrating 20 plus years in operation and the continuation for the nursery  
by the next generation with Matt.

Wander through our nursery garden & find the hidden vouchers!

**Specialising in:**

Native flowering trees & shrubs • Local rainforest & koala trees • Fruit trees  
Grass trees & ornamental grasses • Some exotics & much more

**Plastic Free, bring a box for your purchases**



380 Burringbar Road, Upper Burringbar NSW 2483

Ph/Fx **02 6677 1088**

[www.burringbarrainforestnursery.com.au](http://www.burringbarrainforestnursery.com.au)

Like us on Facebook!

Online Orders Available | Email: [brnursery1@gmail.com](mailto:brnursery1@gmail.com)

**Hours:** Mon – Fri 9am – 4pm • Sat 9am – 2pm

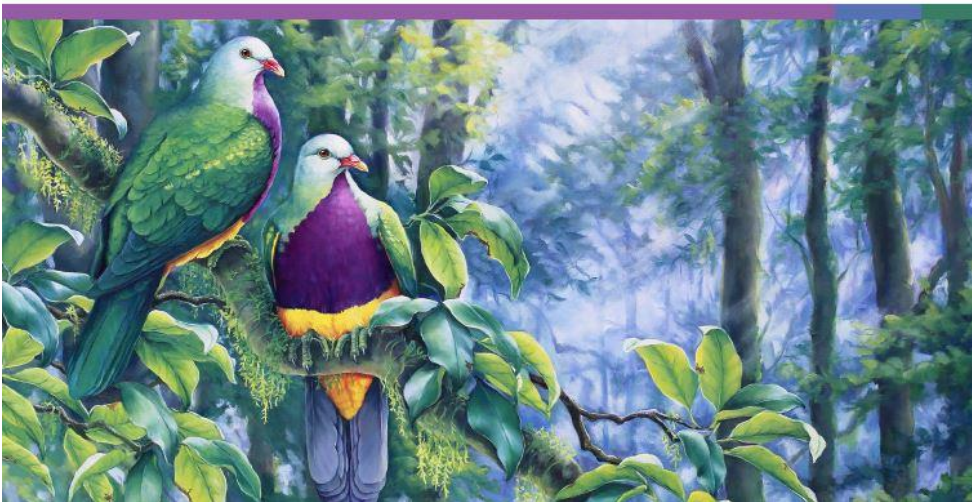


## Dates for your diary

- 24<sup>th</sup> August      How to choose the right native species to plant and how to plant for success, held in Mullumbimby
- 14<sup>th</sup> September    Visit a property with many threatened species and view 5 years of camphor and lantana conversion work, held in Wilsons Creek

### THE 20TH ANNUAL BIG SCRUB RAINFOREST DAY

Sunday 21st October 2018  
7am to 3pm, Rocky Creek Dam



Visit <https://www.bigscrubrainforest.org/big-scrub-rainforest-day/> for more details

A poster for the 2018 National Landcare Conference and Awards. The background is a dark orange with a geometric pattern. At the top left is the National Landcare Conference logo, which features two hands holding a globe. The text reads: "2018 NATIONAL LANDCARE CONFERENCE AND AWARDS", "10 - 12 October", "Brisbane Convention &amp; Exhibition Centre", and "CALL FOR ABSTRACTS NOW OPEN". At the bottom, it says "Proudly supported by" and lists logos for Landcare Australia, National Landcare Network, Australian Government, and National Landcare Program.

Visit <http://www.nationallandcareconference.org.au/> for more details



The SERA 2018 conference is to be held in Brisbane and the proposed themes are focused around four pillars:

- Principal and Practice
- Biomes
- Impact
- Specialist Discipline

# What's your water quality?

**Enrol by 18 June in the WaterPlaces Training Courses  
with Dr Mary Gardner and the WaterPlaces Team**

23 June Sat 9am -5pm  
24 June Sun 9am-3pm

Course will be held in Byron Bay

**\$250 per participants only 6-12 per course**  
includes manual & information sheets PLUS  
12 month supporters' membership & equipment  
access.

For all enquiries and to book please send an  
email with your name & contact details to the  
WaterPlaces Team

[waterplaces2018@gmail.com](mailto:waterplaces2018@gmail.com)

## Enrolment & Payment details

\$100 deposit nonrefundable; payment \$150  
required five business days before start of  
course. Part refund for cancellation with notice 24  
hours before start of course.

Minimum six confirmed participants required. If  
quorum not reached five business days before  
course starts, alternative date will be offered or all  
fees refunded

## Payments please to

Southern Cross Credit Union  
BSB 722 744 ACC 102123346



- Learn how to survey, test for and calculate the health of your local WaterPlace and develop an Action Plan.
- Specifically designed for community members, both young people and adults.
- Brings together public Aboriginal, scientific and place-based ecological knowledge
- On successful completion of the course- 12 month access to the WaterPlaces Loan Library of water quality monitoring equipment plus WaterPlaces support team to better understand and improve the WaterPlaces near you.

**NSW AND ACT 2018**

# THREATENED SPECIES CHILDREN'S ART COMPETITION



The 2018 competition will be open for entries between 4<sup>th</sup> June and 3<sup>rd</sup> August 2018  
Visit <http://www.threatenedspeciesartcomp.net.au/> for more details

**Are you crying out for common sense action on climate change?**

**Do you like the idea of being part of the solution?**

*Repower Byron Shire* is a volunteer run program inspired by the Lock the Gate movement. It's about switching on people power to improve the affordability and ensure the reliability of renewable energy while cutting carbon emissions.

*Repower Byron Shire* is supported by Byron Shire Council, COREM, Zero Emissions Byron and Enova Community and works with households to reduce electricity usage, demystify solar PV and source ethical electricity from retailers who support clean energy over coal and gas.

To find out more and join the campaign just complete the short survey at <http://www.repowerbyron.org/>

**REPOWER**  
**BYRON SHIRE**

## NSW vertebrate pest management symposium

The 2018 NSW Vertebrate Pest Management Symposium is being held in Coffs Harbour from the 16th – 18th October 2018. Abstract

Submission Deadline has been EXTENDED until Monday 11th June! Registrations are also now open. Further details are available on the website – [www.vpmsymposium.com.au](http://www.vpmsymposium.com.au)

**2018**  
**NSW VERTEBRATE  
PEST MANAGEMENT  
SYMPOSIUM**



Lismore: Help us STOP  
the spread of **Yellow  
Crazy Ant**

See it,  
catch it,  
report it!



**Serious pest we need to eradicate**

If you see these ants:  
**[www.dpi.nsw.gov.au/antreport](http://www.dpi.nsw.gov.au/antreport)**  
**Biosecurity Hotline 1800 680 244**  
**or Local Lands Services office**

Yellow Crazy Ant (*Anoplolepis gracilipes*) has been confirmed in Lismore, the first time in more than a decade the species has been found in NSW. Let's hope they have not made their way into Byron Shire but we need everyone keeping an eye out.

Yellow Crazy Ants, a highly invasive exotic pest that can spread very quickly, build super colonies and damage local ecosystems were identified in Lismore recently.

'If you see these ants – yellow or brownish, about 5mm long, with very long legs and antennae and an erratic walking style – you can report them on the Biosecurity Hotline 1800 680 244, the [www.dpi.nsw.gov.au/antreport](http://www.dpi.nsw.gov.au/antreport) or via the Local Lands Services office.

Yellow Crazy Ant is a serious environmental pest, and although not a direct threat to humans they pose a serious economic and environmental threat and have the potential to spread to large parts of Australia.



## BBB Program Update for June 2018

The full program from July to December will be developed within the next three weeks.

Due to health issues, sudden changes may occur to this month's program, and future outings, so it's best to email [byronbirdbuddy@gmail.com](mailto:byronbirdbuddy@gmail.com) or message Byron Bird Buddies.

Phone Jan -02 66803279 or Mobile 0428864378 if you are considering joining us

**What To Bring** - Always wear covered shoes and bring water, hat, sunscreen and insect repellent. Except for presentation days, always bring something to eat for morning or afternoon tea and lunch if it's over the lunch period. For presentation days bring a plate to share for morning or afternoon tea



**Alternative Contact** – for BBB & BVBW activities – contact Anne: 0418244262 or [jones.oz@gmail.com](mailto:jones.oz@gmail.com) otherwise phone Jan: 02 66803279 or Mob: 0428864378 if you are considering joining us

**Note:** For surveys, experience is not necessary. Beginners are welcomed at all outings which will provide an opportunity to learn about our birds and their habitat.

**Wednesday June 6<sup>th</sup> - Byron Wetlands – Time – 8am**

**Reason** – survey of all birds - Brunswick Valley Bird Watchers (BVBW) outing

**Meet** – at the entrance gate – at the end of Wallum Place. Turn into Bayshore Drive off Ewingsdale Rd. - travel past the IGA shopping complex on the (R) then turn into Wallum Place next left.

**Wednesday June 13<sup>th</sup> – Billinudgel Walk – Jones Road Time – 8am**

**Reason** - general survey of all birds – this will be a shorter walk from what was previously advertised

**Meet** – at the end of Jones Road and entrance to The Billinudgel NR. Jones Road is an eastern turn off the Tweed Valley Way just north of Billinudgel.

**Sunday June 17<sup>th</sup> - Byron Wetlands Time – 9am**

**Reason** – Guided walk around some of the wetlands in the morning and depending on interest a power point presentation on Wetland birds in the afternoon

**Meet** – at the end of Wallum Place. Turn into Bayshore Drive off Ewingsdale Rd. - travel past the IGA shopping complex on the (R) then turn into Wallum Place next left. **Note:** If you don't have a key wait at the entrance gate to be let in, key-holders proceed to the carpark. Bring morning tea & lunch.

**Wednesday June 20<sup>th</sup> – Vallances Road – (if the request to mow the grass has been carried out)**

**Time – 8am**

**Reason** – survey of all birds - Brunswick Valley Bird Watchers (BVBW) outing

**Meet** – at the end of Vallances Rd at the gate near the buildings. Vallances Road is a southern turn off Coolamon Scenic Drive between Mullumbimby (8kms) and Ocean Shores (10kms). If coming from Mullum it's a dangerous corner turn, a mirror assists to view traffic from the east. **Note:** the small pond on the way in will be surveyed, but parking is an issue so proceed to gate if all parking spaces taken

**Friday 29<sup>th</sup> Mt Jerusalem NP – Middle Ridge Trail (KBA survey) Time –7.30 and an all day event –**

But you can leave at any time

**Reason** – Surveying for the all birds, but particularly for the Albert's Lyrebird, Paradise Riflebird, Pale-yellow Robin, Logrunner, Green Catbird & Regent Bowerbird

**Meet** – The road is a southern turn off the Mullumbimby (17.6kms)/Uki (13.4km) Road and then another 1.2km to the Trail head. These roads are narrow and rough so it is best to car pool. We will meet at the Main Arm Store at 7.30. Please let Anne know if you intend coming or [byronbirdbuddy@gmail.com](mailto:byronbirdbuddy@gmail.com)



The June issue of Village Eco News is now available. There's a great article on how imitating male can toad calls could help in their control

<http://brunswickvalleylandcare.org.au/wp-content/uploads/2016/06/Village-Eco-News-Issue-22-June-2018.pdf>

## Request for contractors to register with BVL

Brunswick Valley Landcare is putting out a call for local bush regeneration contractors to register with them. We need local experienced and qualified contractors to work on our projects. Registration forms are available to download from the website. <http://brunswickvalleylandcare.org.au/contractors/>

## NCC bushfire representatives needed

Nature Conservation Council (NCC) is seeking expressions of interest from people who want to become a representative on their local Bush Fire Management Committee. For more information, <https://www.nature.org.au/healthy-ecosystems/bushfire-program/become-a-representative/>

## The NSW Invasive Species Plan 2018-2021

The NSW Invasive Species Plan 2018 – 2021 has been released and is available at:

<https://www.dpi.nsw.gov.au/biosecurity/weeds/strategy/strategies/nsw-invasive-species-plan-2018-2021>

The NSW Invasive Species Plan 2018–2021 is an update of the NSW Invasive Species Plan 2008–2015. The Plan supports the NSW Biosecurity Strategy 2013–2021 and identifies key deliverables to help prevent new incursions, eliminate or contain existing populations and effectively manage already widespread invasive species. Its scope includes weeds, and vertebrate and invertebrate pests in terrestrial, freshwater and marine environments.

## Pasteurized Garden Organics & Compost

The Byron Resource Recovery Centre (BRRC) has created an economic and environmentally friendly organic product from local garden waste by amending its physical and chemical properties. Sold as either pasteurized garden organics or compost, it can be used in all market sectors including domestic use, urban landscaping, agriculture, and land rehabilitation.

The garden organics material has been treated using pasteurizing and composting procedures. Raw material is collected from local customers whom deposit garden waste at the BRRC. Garden waste is mechanically shredded and put into windrows for the pasteurisation process. Pasteurisation is a heat cycling process that sanitises the organic material. Microbial activity creates heat as the material breaks down. Temperatures above 55°C are reached over multiple cycles of windrow turning.

Moisture and aeration is added, and daily temperature monitoring ensures production of a high quality product, killing off any disease causing bacteria and destroying seeds. Samples are sent for testing at a NATA accredited laboratory. Once compliant results are received, as defined by the Australian Standard 4454-2012 for Compost, Soil Conditioners and Mulches, the pasteurised garden organics or compost is made available to customers for application to land as a soil conditioner.

Ask at the weighbridge to view the physical and chemical properties in the latest environmental analysis report. If considering a bulk order or would like more information, contact the Environmental Programs Officer (02) 6626 7175.



## STORIES to inspire and give you hope



Meet Dave, one of Byron Shire Council's Bush Regeneration Officers.

Dave is passionate about supporting our local environment and biodiversity. Through his series of monthly bush tip videos, we hope to share with the wider community some simple ways you can support our bush regeneration team in their mission.

Dave quickly became a sensation on Facebook after his first video explaining how to neatly condense palm fronds into your green bin.

<https://www.byron.nsw.gov.au/Projects-and-initiatives/Bush-regeneration-tips-with-Dave>

### **Natural regeneration or tree-planting?** By University of Maryland Baltimore County

At a time when countries are pledging to restore millions of hectares of forest, new research argues that recent studies on forest regeneration techniques are flawed. Sites used to evaluate natural regeneration were secondary growth forests, whereas sites chosen to evaluate artificial regeneration ranged from abandoned coal mines to cattle-trampled fields. Authors of the new study suggest elements of both techniques should be considered, depending on the objectives for a site and its current state.

When embarking on a reforestation project, is it better to let an area regenerate on its own, or take active steps like planting trees? Recent high-profile research has suggested that natural regeneration is more effective. However, UMBC's Matthew Fagan and colleagues have just published their own research in *Science Advances* suggesting those studies were biased, and advocating for a more nuanced approach to forest restoration.

"The main takeaway from our paper is that natural regeneration isn't a guaranteed success, even in the tropics. Sites can be so damaged by human management that they take a long time to recover," says Fagan. "So while natural regeneration can be a useful restoration possibility, we shouldn't necessarily assume that it's always better for all objectives." Those objectives could include pulling carbon out of the atmosphere, preventing erosion, filtering air and water, or building up sustainable agriculture, such as shade-grown coffee. "Contrary to previous scientific arguments, planting trees can be a perfectly viable choice."

To read more : <https://www.sciencedaily.com/releases/2018/05/180516144706.htm>

# Land for Wildlife



## Funding for Land for Wildlife members

### Conservation Partners Grants

Conservation Partners Grants are now available on an ongoing basis. All existing BCT agreement holders that do not receive annual conservation management payments are eligible to apply for grants. Grants can assist landholders to maintain the ecological values of their properties. For example, a landholder may need funding to manage a weed outbreak or repair a fence to exclude stock.

The grants are also available to those participating in the Community Environment Network's (CEN) Land for Wildlife or Humane Society International's (HSI) Wildlife Land Trust programs.

#### Resources:

- [Fact sheet](#)
- [Application](#) form
- [Program Guide](#)

### Conservation Partners Program

BCT has also commenced its Conservation Partners Program. This program is for landholders wishing to enter into either a Wildlife Refuge Agreement or an in-perpetuity Conservation Agreement to protect and manage biodiversity on their land.

It is available for landholders who are not seeking or are ineligible for conservation management payments. Eligible properties will be offered in-perpetuity Conservation Agreements or Wildlife Refuge Agreements at no cost to the landholder.

#### Resources:

- [Fact sheet](#)
- [Program Guide](#)

## Fig Boxes by Myuna Park Bushcare Group

In June, our Habitat Brisbane Support Officer installed 6 "fig boxes" in Myuna Street Park. The idea is that the Fig boxes are placed on a pest tree (Chinese Elms in our case) & over time the fig will strangle the pest tree. We have plenty of mature Chinese Elms to experiment with.



Other methods to try are cutting a hollow in the trunk of the pest tree with a chain saw and filling the hole with sphagnum moss before planting with a fig.



<https://www.facebook.com/myunapark/posts/1050650611754916>

## FUNDING

### Do you have a great project and need funds to make it happen?

You can find more information on available grants on the Brunswick Valley Landcare website including a calendar of all grants expected to be available during 2018. There are also some handy tips on how to be successful with grant applications. Below is a summary of grants which are currently accepting applications and ones that are anticipated to open within the next month.

<http://brunswickvalleylandcare.org.au/funding/>

### Wettenhall Environment Trust Small Grants Scheme

The Small Environmental Grant Scheme provides support for people undertaking projects that will make a positive difference to the natural living environment, in land, sea or air, rural or urban. There are only opening dates, no closing dates - they close the round when satisfied that there are a suitable number and spread of applications. So it's best to get in as soon as you can when the round opens.



**19th June 2018** (funding in August 2018), 18th September (funding in November 2018), 11th December 2018 (Funding in February 2019) [Find out more or apply here.](#)

### Eco Schools Grants

The purpose of these grants is to fund environmental management projects that assist schools with environmental learning opportunities for students, teachers and the school community. Eco Schools' projects provide hands-on curriculum-based environmental education focussing on strong student participation.

#### Funding available

Eighty individual grants of \$3500, with a total of \$280,000 available to schools.

#### Who can apply?

All registered schools in NSW are eligible to apply. Projects working primarily with students with special needs are encouraged.

**Applications close 3pm Monday 18 June, 2018**

For more details go to

<http://www.environment.nsw.gov.au/grants/schools.htm>

### Flow Hive Pollinator Support Program

Beeinventive, the company behind the award-winning Flow Hive, is allocating 100 percent of profits from sales of the Flow Pollinator House which sold out last year in the United States and Australia, to organisations that support local grass roots pollinator projects in these two countries.

As part of the company's commitment to business with positive purpose, AUD\$20,000 in each country (AUD\$40,000 in total) will be offered to not-for-profit organisations, educational institutions and community groups, for projects which support pollinating insects.

#### KEY POINTS

- Flow Hive Pollinator support Program
- **AUD\$20,000 to be donated in Australia**
- Program launched on World Bee Day, 20 May, 2018
- **Applications close Thursday 28 June, 2018**
- Not-for-profit organisations, educational institutes and community groups operating under the auspices of not-for-profit organisations can apply.

In Australia, please visit: <https://www.honeyflow.com.au/pages/pollinator-support-program>



## Biodiversity Conservation Trust funding for private land conservation

The NSW Government has committed \$37 million for the opening programs from the new NSW Biodiversity Conservation Trust (BCT).



Biodiversity  
Conservation  
Trust

Tenders are invited for up to \$2 million to protect priority koala habitat, and \$2 million for fixed rate offers for conservation agreements in high priority investment areas and \$2 million for Conservation Partners Grants.

### Conservation Partners Grants

Conservation Partners Grants are now available on an ongoing basis. All existing BCT agreement holders that do not receive annual conservation management payments are eligible to apply for grants. Grants can assist landholders to maintain the ecological values of their properties. For example, a landholder may need funding to manage a weed outbreak or repair a fence to exclude stock.

The grants are also available to those participating in the Community Environment Network's (CEN) Land for Wildlife or Humane Society International's (HSI) Wildlife Land Trust programs.

#### Resources:

- [Fact sheet](#)
- [Application](#) form
- [Program Guide](#)

### Conservation Partners Program

BCT has also commenced its Conservation Partners Program. This program is for landholders wishing to enter into either a Wildlife Refuge Agreement or an in-perpetuity Conservation Agreement to protect and manage biodiversity on their land.

It is available for landholders who are not seeking or are ineligible for conservation management payments. Eligible properties will be offered in-perpetuity Conservation Agreements or Wildlife Refuge Agreements at no cost to the landholder.

#### Resources:

- [Fact sheet](#)
- [Program Guide](#)

---

## 2018 SUEZ Community Grants

We are passionate about helping communities, businesses, government and industry solve some of our toughest resource problems.



In 2018, we will provide community groups, schools and organisations across **Australia and New Zealand** with funding **up to \$15,000** to help improve local communities and the environment.

Applications are now open until **Friday June 8th 2018 at 5pm AEST**.

Head to [www.suezcommunitygrants.com.au](http://www.suezcommunitygrants.com.au) to submit your project.

---

## Growing Good Gardens Grant

Schools, pre-schools and community groups are invited to apply for one of 15 \$1,000 grants to help create a garden space where kids can learn healthy habits and improve their physical and mental well-being. Applications closes **15 June 2018**. For more information, <https://www.lifeeducation.org.au/about-us/partners/yates-gardening/gardengrants>



## Repair-Restore-Renew (RRR) - Round 1



FRRR's Repair-Restore-Renew (RRR) Program helps communities recover from natural disasters, by providing grants that help to address community needs that begin to emerge 12-18 months after the disaster event. FRRR's experience shows that this is the time when the focus often moves to community recovery, as individual needs have often been met. It is also the time when the rest of the world has often turned its attention to subsequent natural disasters.

The objective of the Repair-Restore-Renew (RRR) program is to *deliver a collaborative, flexible and responsive grants program to support recovery from disaster, increase the resilience and capacity of community groups; and create new opportunities for partnership, enterprise and leadership in regions across rural and regional Australia.*

Byron, Ballina, Tweed and Lismore Local Government Areas are all eligible. Applicants are required to nominate the focus area most closely aligned with their project:

- Building Community Resilience;
- Developing Organisational Resilience and Capacity;
- Enhancing Environmental Sustainability;
- Fostering Cultural Vibrancy;
- Economic Strength;
- Improving Community Health & Social Wellbeing.

Grants from \$100 to \$15,000 will be provided to not-for-profit and community organisations (ABN or incorporation certificate required) based in, or working in [eligible communities](#) for projects that can clearly demonstrate the following:

- Direct benefit to at least one of the communities that were affected or impacted by cyclone or flooding during 28 March to 6 April 2017;
- Have a charitable purpose (benefit the wider community);
- Contribute to local community recovery in the areas of social and community wellbeing, economic recovery, environmental recovery, health, education, and culture;
- A benefit to the community in the medium to long term recovery process (12 months on following the natural disaster);
- It does not duplicate an existing service or program;

The project will occur post October 2018. **Applications for Round 1 are now open and close at 5pm AEST on Monday, 18 June 2018.**

[https://www.frrr.org.au/grants/Repair-Restore-Renew\\_2017\\_R1](https://www.frrr.org.au/grants/Repair-Restore-Renew_2017_R1)



## Weed of the Month

This month's weed of the month is Asparagus Fern or Ground Asparagus *Asparagus aethiopicus*.

A sprawling ground cover with drooping stems to about 2 m long. Spines are present and the roots are fibrous or tuberous. The stems bear narrow flattened "leaves".

Flowers are small white to pinkish, are clustered and appear in spring to summer. The fruit are round red berries with a single seed which can be present on the plant all year round.

It forms a dense ground storey smothering seedlings. It invades forest understorey, especially on the coast.

The seeds are a favourite of birds who disperse it. It is often dumped in garden refuse.

Similar native species are Wombat Berry *Eustrephus latifolius*, and Scrambling Lily *Geitonoplesium cymosum*. Also newly emerged Hoop Pine, *Araucaria cunninghamii* seedlings have a similar shape to Asparagus seedlings but are firmer and spikier.



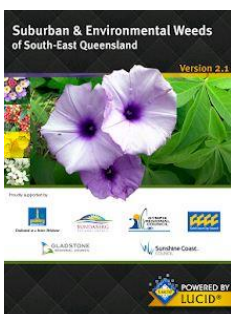
Unfortunately the new Byron Shire Council website does not include the weed information sheets. If you would like a copy of these for a particular weed please contact me.



You can find more information and other weed info on the Department of Primary Industries website <http://weeds.dpi.nsw.gov.au/>

Or you can download their weed wise APP onto your phone or tablet. NSW WeedWise presents information for over 300 noxious and environmental weeds in NSW, including Profiles, Control (including herbicide options).

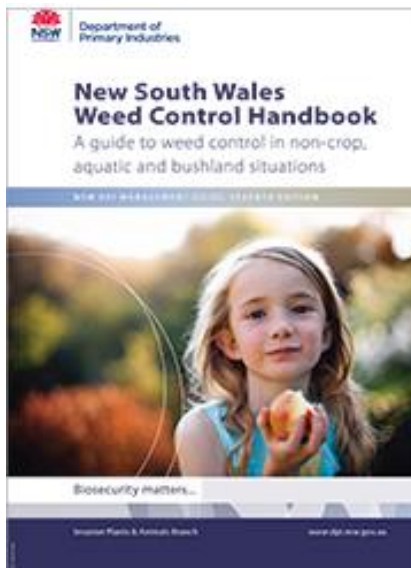
<http://www.dpi.nsw.gov.au/images/topic-images/biosecurity/weeds2/images/wid-documents/weed-wise-spotlight>



There is also another good free APP – Suburban and Environmental Weeds of South East Queensland. SE QLD shares many of the same weeds as us and this app has recently been updated.

[https://play.google.com/store/apps/details?id=com.lucidcentral.mobile.sew\\_full&hl=en](https://play.google.com/store/apps/details?id=com.lucidcentral.mobile.sew_full&hl=en)





The latest edition of the DPI weed control handbook has been released by and can be downloaded at

<https://www.dpi.nsw.gov.au/biosecurity/weeds/weed-control/management-guides/noxious-enviro-weed-control>

Free hard copies are available at Primex, from the Rous County Council offices or from your local council office, while stocks last.

This book has all the registered chemicals for weeds and at what rates they can be used and a must have for anyone treating weeds on their property



Chinese Violet (*Asystasia gangetica* ssp. *Micrantha*) is a high risk species targeted for eradication in NSW. While some undesirable species are obvious, Chinese Violet looks harmless enough until you take note of the way it spreads. As an environmental weed, it smothers other ground plants and displaces vegetation, which reduces the availability of habitat for native plants and animals and therefore reduces biodiversity.

Rous County Council regularly receive reports of suspicious plants and roadside

garden dumping. Plants such as Chinese Violet find their way to these sites when landowners that plant them realise they have out grown the site for which they were originally intended.

### Key points

- Chinese Violet is a mat forming creeper which can smother more desirable plants.
- Prevention and early intervention are the most cost-effective forms of weed control.
- Avoid creating bare areas where weeds can invade.
- Do not attempt control on your own, as it can spread very easily from both seeds and stems.

If you see a plant that may be Chinese violet, contact your local weed control authority, Rous County Council on 02 66233847

## WORKING BEES - why not get out and get involved in one of our local groups?

For all Landcare Working Bees please wear protective clothing - long pants, long-sleeved shirt, closed-in shoes, hat, gloves and bring water, sunscreen, and insect repellent. **Please always contact the groups co-ordinators before attending a working bee as plans do change!**

### Brunswick Heads Dunecare

WHEN: 4<sup>th</sup> Sunday of the month 8:00am – 11:00am  
WHERE: Meet in North Beach Car Park  
CONTACT: Jordan Moore [brunswickheadsdunecare@gmail.com](mailto:brunswickheadsdunecare@gmail.com) 0413 962 468 txt mess pls

### Yallakool Reserve Landcare, Ocean Shores

WHEN: each Friday at 8.30 am  
WHERE: corner of Yallakool Drive and Warrambool Road, Ocean Shores  
CONTACT: Felicity Watson 0467 650 140  
or David Kemp [dnkemp77@gmail.com](mailto:dnkemp77@gmail.com) 0427 650 861

### Green and Clean Awareness Team, Byron Bay

WHEN: 3<sup>rd</sup> Sunday of the month 9:00am  
WHERE: Meet Main Beach, Byron Bay  
CONTACT: Veda Turner [vedaturner@gmail.com](mailto:vedaturner@gmail.com) 0427 857 991

### Heritage Park Landcare, Mullumbimby

WHEN: alternate Saturdays 9:00am – 11:00 am  
WHERE: Heritage Park, Mullumbimby  
CONTACT: Diana Hughes [bromspot@gmail.com](mailto:bromspot@gmail.com)

### Jinangong Landcare, Ocean Shores

WHEN: 1<sup>st</sup> Sunday of the month  
WHERE: The Tunnel Road, Ocean Shores  
CONTACT: Ian Parer [ianparer@hotmail.com](mailto:ianparer@hotmail.com)

### Lower Mullum Creek Landcare, Mullumbimby

WHEN: 2<sup>nd</sup> Sunday of the month  
WHERE: find out from Rita de Heer  
CONTACT: Rita de Heer 02 6684 1495 [rdeheer1@bigpond.com](mailto:rdeheer1@bigpond.com)

### South New Brighton Dunecare

WHEN: 1<sup>st</sup> Friday of the month 1:30pm - 4:30pm  
WHERE: Meet at southern end of the Esplanade at the Strand beach access point.  
CONTACT: Robyn Bolden [robyn.bolden@australis.net](mailto:robyn.bolden@australis.net) 6680 1970

### Suffolk Park Dunecare

WHEN: 1<sup>st</sup> Saturday of the month  
CONTACT: Helen Brown [hellyh@bigpond.com](mailto:hellyh@bigpond.com) 6685 4964

### Tyagarah Landcare

WHEN: Each Thursday 9:00am – 11:00am  
WHERE: 23 Prestons Lane, Tyagarah  
CONTACT: Bela Allen [bela\\_allen@yahoo.com](mailto:bela_allen@yahoo.com) 6684 7113

## LINKS

- Arakwal <http://arakwal.com.au/>
- Border Rangers Alliance <http://www.greasternranges.org.au/border-ranges/overview/overview>
- Bangalow River and Landcare <http://www.bangalowlandcare.org.au/>
- Big Scrub Landcare <https://www.bigscrubrainforest.org.au/>
- Brunswick Valley Landcare <http://www.brunswickvalleylandcare.org.au/>
- Byron Bird Buddies <http://www.byronbirdbuddies.com.au/>
- Byron Community College <http://www.byroncollege.org.au/>
- Byron Shire Council <http://www.byron.nsw.gov.au/>
- EnviTE [www.envite.org.au](http://www.envite.org.au)
- Environmental Trust <http://www.environment.nsw.gov.au/grants/envtrust.htm>
- Friends of the Koala [www.friendsofthekoala.org](http://www.friendsofthekoala.org)
- Local Land Services [www.northcoast.ils.nsw.gov.au](http://www.northcoast.ils.nsw.gov.au)
- North Coast Local Land Services <http://northcoast.ils.nsw.gov.au/>
- Northern Landcare Support Services <http://www.nlss.com.au/>
- Mullumbimby Community Gardens <http://mullumcommunitygarden.wordpress.com/>
- North Coast nature <http://www.northcoastnature.org.au/>
- Richmond Landcare Inc. <http://www.richmondlandcare.org/>
- Rous County Council (formerly Far North Coast Weeds) <http://rous.nsw.gov.au/>
- Soilcare <http://www.soilcare.org>
- Suffolk Park Locality Group (BVL) [www.landcare.nsw.gov.au/groups/suffolk-park-dunecare-group](http://www.landcare.nsw.gov.au/groups/suffolk-park-dunecare-group)
- Tweed Landcare Inc. <http://www.tweedlandcare.org.au/>
- Wilson's Creek Huonbrook Landcare <http://www.wilsonscreeklandcare.mullum.com.au/>
- Wetlandcare Australia <http://www.wetlandcare.com.au/index.php>

For information about Landcare or other natural resource issues in Byron shire  
please contact

Landcare Support Officer

Alison Ratcliffe 6626 7028 0421 244 640 (Monday, Thursday and Friday)

email: [alison@brunswickvalleylandcare.org.au](mailto:alison@brunswickvalleylandcare.org.au)



This newsletter is funded through the Community Capacity Support program which is supported by North Coast Local Land Services, through funding from the National Landcare Programme and from the NSW Government's Catchment Action NSW and supported by Byron Shire Council.



Local Land  
Services  
North Coast

