

GREETINGS LANDCARERS

What a month it has been...

From trauma, shock and grief comes love, heroism and exhaustion and healing.

What an extraordinary, wonderful, beautiful, heart warming, resilient, resourceful and amazing community we are all a part of.

The incredible generosity of humanity that comes out of immense natural disasters is something else.

Whilst covid divided us in weird and confusing ways this has brought us together and grounded us. Whilst it is great to help out as best we can, it is extremely important to ensure the personal tea cup is full.

We must also rest so we can keep going, take a breath so we can keep going.

Practice saying "yes please" when much needed help is offered, many of us find it difficult receiving.



BVL is in assessing mode but still plans some workshops in the next few months.

Stay tuned.

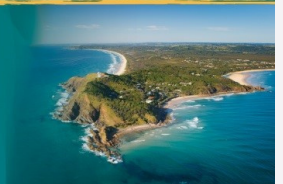
Some images from Mullumbimby Creek and Ballina





Media release

Byron Shire Council



Byron Shire Flood Recovery Update

A big shout out to the staff who have been working on the road network in the hinterland behind Mullumbimby.

Mullumbimby Flood Recovery Centre

From Monday 21 March there are new opening hours:

- Monday – Friday from 9am – 4:30pm
- Saturdays – 9am – 2pm
- Sundays – closed

With so many people struggling with damaged cars, free community transport is also now available to and from the Mullumbimby Recovery Centre – you just need to call to book on [1300 875 895](tel:1300875895).

If you need assistance in moving a vehicle that is unable to be repaired, call Council's Public & Environmental Services on [6626 7107](tel:66267107).

We are hearing that some people are hesitant to use the services on offer at the Recovery Centre because there are others in the community who are more heavily impacted.

A reminder that the Centre is there to provide support for **everyone**, so please make the most of these services while they are on the ground to help our Shire.

The **Cavanbah Centre** is operating as usual from 8am – 6pm, 7 days per week.

It is also offering hot showers to people who have been out assisting with recovery operations.

Grants and Government Financial Assistance

- Call Services Australia on [180 22 66](tel:1802266).
- [Services Australia](#) website
- [myGov](#) website.
- [Service NSW](#) website

Council Services

- The Customer Service Centre is open from 8:30am – 4pm Monday to Friday
- Call 6626 7000
- Email council@byron.nsw.gov.au
- Report non-urgent requests online using [Report It](#)
- For after-hours emergencies call [02 6622 7022](tel:0266227022)

There are also Council staff available at the Flood Recovery Centre at the Civic Hall in Mullumbimby.

For the latest information on Council services go to our [website \(www.byron.nsw.gov.au\)](http://www.byron.nsw.gov.au) or our [Facebook](#) page.

Byron Shire's [Emergency Dashboard](#) also has links to the SES, BOM and road closure information.

Roads and bridges Upper Wilsons Creek

The Australian Defence Force are helping to improve the access at the Upper Wilsons Creek landslip and from Monday teams will be starting road repairs, beginning at the first causeway and working up to the end of the road. Restoring 4WD access is the priority.

Huonbrook

The first landslip in Huonbrook is still moving and is a safety concern. The road will need to be under 24hr traffic control for months and could be closed at short notice as risks change due to weather and movement. We are monitoring the safety aspects as we proceed with drilling and clearing.

While vehicle access is being slowly restored through the valley, this will not be a quick process due to the number, size and complexity of the landslips. Driving beyond the first Wanganui landslip is not supported by Council.

Wanganui

Risk assessments have been done on the first two landslips at Wanganui and approved for clearing for emergency access. We will start this work as soon as we can access the site.

Temporary Housing

The NSW Government is preparing a temporary housing support package to help people who need accommodation support in the coming weeks and months.

You can register to receive further information here - [Get notified about floods temporary housing support package | Service NSW](#)

Council Services

- The Customer Service Centre is open from 8:30am – 4pm Monday to Friday (excluding public holidays)
- Staff are available on the phone from 8:30am – 4:30pm Monday to Friday (excluding public holidays)
- Email council@byron.nsw.gov.au
- Report non-urgent requests online using Report It
- For after-hours emergencies call 02 6622 7022.
- There are also Council staff available at the Flood Recovery Centre at the Civic Hall in Mullumbimby.



Have you lost plantings due to flooding?

BVL is working with Byron Shire Council to collate damage caused by the recent catastrophic flooding on Koala tree plantings restoration sites. At this stage we are seeking information on damage caused specifically by flooding rather than landslides.

The information collected will be used to access recovery funding through the state government. In order to submit to state government, Information needs to be provided by mid April at the latest. We understand that so many people have so much going on and we apologise for the short time frame.

Information such as:

- % impacted
- Number of losses (if known)
- Area of plantings
- Species
- Vegetation community - riparian, rainforest, sclerophyll
- Age of planting
- Any before and after photos



Down stream vast swathe of vegetation removed.



This beautiful old Blue Quandong, an old friend gone...

BACK FROM THE BRINK

Black swans return in big numbers to the Coorong and Lower Lakes

ABC Rural By Cassandra Hough

Huge numbers of birds have flocked to South Australia's Lower Lakes and Coorong region after months of sustained flows that have transformed the Murray mouth.

Traditional owners are pleased to see the culturally important kungari (black swan) return en masse to the Coorong.

Sustained inflows from the River Murray have revitalised the Coorong and Lower Lakes

<https://www.abc.net.au/news/rural/2022-02-18/coorong-black-swans/100838346>



The Coorong's wildlife is thriving in the conditions.(Supplied: Sally Grundy)



Birds have flocked to the Coorong this year.(Supplied: Sally Grundy)

ENDANGERED BUM-BREATHING PUNK TURTLES THRILL RESCUERS WITH LATE HATCHING

ABC Rural By Jennifer Nichols

A precious clutch of endangered, bum-breathing Mary River turtle babies has defied the odds by surviving huge floodwaters and hatching long after rescuers feared they may have died. Graziers, dairy farmers, and members of the Mary River Catchment Coordinating Committee (MRCCC) gathered to release the hatchlings, excited to have saved them.

<https://www.abc.net.au/news/rural/2022-02-20/turtle-bum-breathing-mary-river-catchment-threatened-species/100804026>



Threatened Mary River turtle hatchlings.MRCC



Sally and Ian Mackay watched over the relocated hatchlings.(ABC Rural: Jennifer Nichols)



The turtle, sporting an algae mohawk with spikes under its chin, has received worldwide attention.(Supplied: Chris Van Wyk)

CLIMATE

A NEW GUIDE FOR PARENTS: MANAGING ECO-ANXIETY IN YOUR KIDS

By Kate Charlesworth

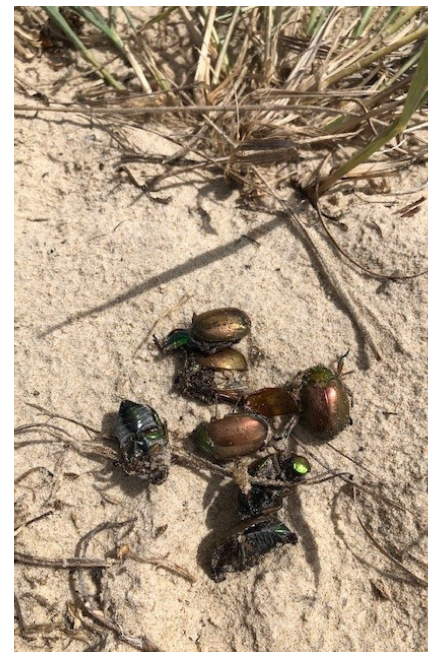
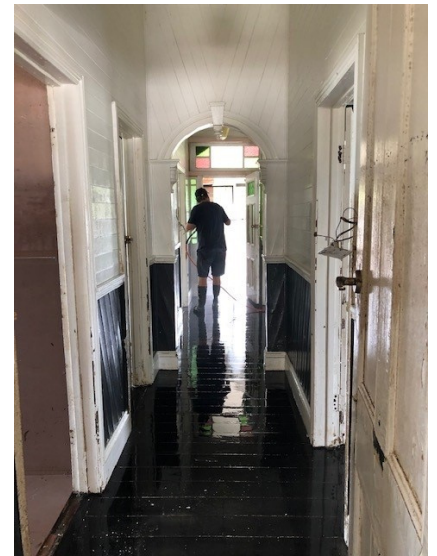
A recent survey of 10,000 children and young people (aged 16-25 years) in 10 countries (including Australia) found that 59% were **very or extremely worried about climate change**, with **84% at least moderately worried**.

Of note, climate anxiety and distress correlated with “perceived inadequate government response and associated feelings of betrayal”.

It is also important to stress, as mental health professionals are quick to note, that **‘eco-anxiety’ is not actually anxiety – it’s an appropriate and rational response to the robust scientific evidence and the climate breakdown that we are beginning to witness.**



<https://www.climatecouncil.org.au/guide-parents-managing-eco-anxiety-your-kids/>



REGENERATIVE AGRICULTURE

KENYA TO USE SOLAR PANELS TO BOOST CROPS BY 'HARVESTING THE SUN TWICE'

SUCCESSFUL TRIALS FOUND GROWING CROPS BENEATH PANELS – KNOWN AS AGRIVOLTAICS – REDUCED WATER LOSS AND RESULTED IN LARGER PLANTS

The Guardian Geoffrey Kamadi

Solar panels are not a new way of providing cheap power across much of the African continent, where there is rarely a shortage of sunshine. But growing crops underneath the panels is, and the process has had such promising trials in Kenya that it will be deployed this week in open-field farms.

Known as agrivoltaics, the technique harvests solar energy twice: where panels have traditionally been used to harness the sun's rays to generate energy, they are also utilised to provide shade for growing crops, helping to retain moisture in the soil and boosting growth.



A research collaboration between the University of Sheffield and the Latia Agripreneurship Institute in the semi-arid Kajiado county had promising results. Photograph: Courtesy of The University of Sheffield

.....

LAND OF OPPORTUNITY: MORE SUSTAINABLE AUSTRALIAN FARMING WOULD PROTECT OUR LUCRATIVE EXPORTS (AND THE PLANET)

Frank Jotzo, Australian National University and David Lindenmayer, Australian National University

Business and governments across the world are embedding carbon abatement considerations into their trade negotiations and relationships. As an industry dependent on exporting, Australian agriculture must be ready to adjust to a more carbon-conscious trading future.

In addition to a substantial greenhouse gas footprint from agriculture, Australia also has a truly terrible record on biodiversity loss. The argument for farmers to adopt more sustainable practices – and for governments to help the shift – is growing ever more compelling. Not only would it safeguard our exports, it would cut emissions and help protect nature.



Additives to stock feed can lead to fewer methane emissions. AAP

[ANU College of Science](#) | [The Australian National University](#)

THIS FARMER USING GUINEA PIGS TO CONTROL WEEDS IS ALL YOU NEED TO BRIGHTEN YOUR DAY

ABC Rural By Tanya Murphy

Biodynamic farmer John Gargan has come up with a novel solution, adding 50 weed-busters of a totally different stature to his operation at Mutchilba, west of Cairns.

"A lot of people think I'm crazy, but I just get so much joy out of these little guys doing their job," Mr Gargan said.

"There's no superannuation loading, they don't mind doing the job, and they turn up every day."

<https://www.abc.net.au/news/rural/2022-02-23/guineapigs-farmer-weeds/100853008>



Shelters and electric fencing will be used to protect the guinea pigs. (ABC Rural: Tanya Murphy)



And then you can eat them...

TASMANIAN COUPLE FARM 'SUSTAINABLE' GUINEA PIG MEAT, A COMMON PROTEIN SOURCE OVERSEAS

ABC Northern Tasmania By Sarah Abbott

Rees and Col Campbell know that backyard guinea pig farming is not for everyone.

"Certainly it's not everyone's cup of tea to grow and kill their own guinea pigs for meat," Ms Campbell said.

"But if we're going to eat meat, guinea pig meat is a very sustainable meat to produce."

And, since the Campbells' guinea pigs live "happy" lives, the couple argue that eating them is more socially and ethically responsible than consuming many other meats.

"It is a kinder all-round way of eating meat," Ms Campbell said.

<https://www.abc.net.au/news/2021-03-09/tasmanian-couple-farming-guinea-pigs-for-meat/13187698>



Ms Campbell says most people expect guinea pig to taste like rabbit, but it doesn't. (ABC Northern Tasmania: Sarah Abbott)

EVENTS AND SEMINARS

COMMUNITY PLANTING!

Join us

Saturday 26th March 2022 9am

Coming from Mullum

Turn left into 305 Mainarm Rd. Follow
bitumen.

Where road ends turn into paddock on left
and park.

There will be a flag and blue container in
paddock.



**Bring: hand tools like hand trowels and
digging tools**

**Wear: hat sunscreen, sturdy shoes, long
sleeves, long pants, insect repellent
and plenty of water**

Morning tea will be provided

This community planting is part of the River to
Ridge Mooibal Spur project funded by the
NSW Government Environmental Trust



A SUPERSTAR OF THE AUSTRALIAN BIRD WORLD, GISELA KAPLAN WILL VISIT BYRON AND SPEAK AT A FREE EVENT AT THE BOOK ROOM IN BYRON.

Gisela is author of award-winning and best-selling books, including Bird Bonds, Australian Magpie, Tawny Frogmouth, Bird Minds and Famous Australian Birds.

Tuesday March 29th 5:45 pm to 7:00 pm.

27 Fletcher Street, Byron bay

Free event but please register for a free ticket here:

<https://www.eventbrite.com.au/e/gisela-kaplan-understanding-australian-birds-tickets-276347742537?aff=ebdsoporgprofile>

Bio: Gisela Kaplan (PhD, PhD, Hon.DSc) is a field biologist and Emeritus Professor of Animal Behaviour at the University of New England, Armidale, New South Wales.

She has authored more than 250 research articles and has conducted groundbreaking research into vocal learning, communication and cognition in birds and other vertebrates.

Her books include award-winning and bestselling titles such as Australian Magpie (2019), Tawny Frogmouth (2018), Bird Minds (2015), Famous Australian Birds (2004) and Bird Bonds (2019).

For the past two decades, she has raised and rehabilitated injured native birds. Her vast experience with native birds in their natural environment is only surpassed by her passion for all things to do with native birds.



Integrated Pest Management

WORKSHOP
FRIDAY 8TH APRIL 2022

Learn about integrated pest management on your farm
Morning tea included
Featuring Ross Arnett IPM Farmer, and Richard Llewellyn BioResources IPM advisor

\$10 PER TICKET

More information and ticket booking
<https://integratedpestmanagement.eventbrite.com.au>



Brunswick Valley
Landcare

This project is supported by by Byron Shire Council through funding from the Australian Government's National Landcare Program Smart Farms Small Grants.



National
Landcare
Program

NATIVE PLANT OF THE MONTH

Small Leaf Tamarind *Diploglottis campbellii*

Small-leaved Tamarind is a small, dense tree that produces large orange fruits with a delicious, tangy pulp.

Listed as Endangered (Biodiversity Conservation Act 2016 (New South Wales): February 2021 list)

Description

A medium-sized, rainforest tree growing 18 to 30 m in height (Floyd 1989; Reynolds 1985; NSW DECCW 2005cm).

It has a fluted trunk and greyish-brown bark with vertical cracks. New leaves are at first softly-hairy, but soon become more or less hairless.

The leaves are 10-35 cm long and are divided into four to eight leaflets.

Flowers

Creamy-brown flowers are borne on a stem 10-16 cm long.

Fruit

The fruits are hairless, yellow-brown capsules, 3-5 cm in diameter, usually with two lobes. Each lobe contains a single, round seed surrounded by thick bright orange/red or yellow flesh (NSW DECCW 2004h).

https://www.environment.gov.au/cgi-bin/sprat/public/publicspecies.pl?taxon_id=21484

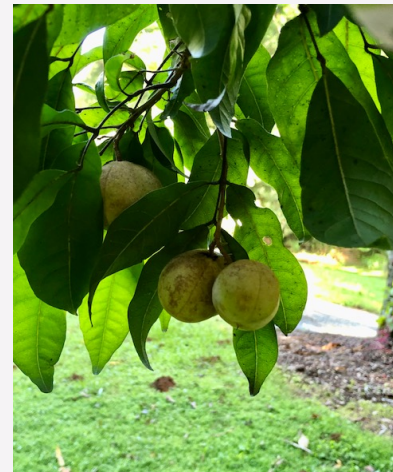


Photo credit: R Merdith

WEED OF THE MONTH

Water Hyacinth *Eichhornia crassipes*

Water hyacinth is illegal to trade and devastating to our environment. These plants grow at a rapid rate and costs hundreds of thousands of dollars to control.

How does this weed affect you?

Water hyacinth smothers the surface of waterways, dams, irrigation channels and drains. It can rapidly take over an entire waterway and under favourable conditions it can double its mass every 5 days.

- reduces water levels
- reduces water quality
- causes changes in water temperature and pH
- lowers oxygen levels
- reduces the amount of sunlight under the water.
- masses of the plant settle in a paddocks after floods
- destroying fences, roads, bridges and culverts when **masses of the plant become mobile during floods.**

How does it spread?

By seed

The seeds are released from the capsule underwater. Each capsule has between 40 and 300 seeds. The seeds either sink or accumulate in the floating plant mat. Seed remains viable for up to 20 years in mud or soil. Seeds can be moved to new locations by water flows or via mud stuck to birds, machinery and footwear. **FLOOD EVENTS**

Plants are also spread by people:

- planting water hyacinth in ponds or dams
- dumping unwanted aquarium plants into waterways
- moving contaminated fishing equipment, watercraft and boat trailers.

By plant parts

Water hyacinth infestations increase most rapidly by producing new daughter plants. Each plant can produce 2-4 daughter plants. Most of these are produced in spring to summer. During high water flows and flooding, plant masses can break up and move to new locations.

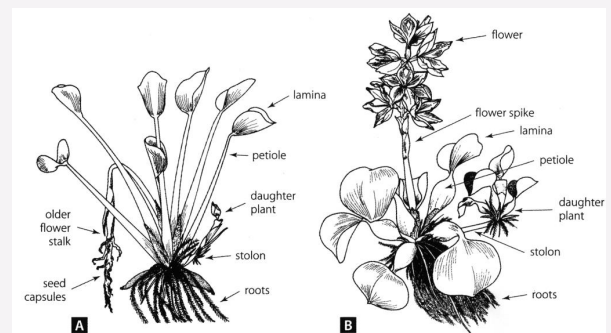
<https://weeds.dpi.nsw.gov.au/Weeds/Details/145#:~:text=Water%20hyacinth%20grows%20along%20the,populations%20are%20still%20being%20controlled.>

With recent devastating flooding Water Hyacinth has travelled down to the mouth of the Richmond River in Ballina. See two bottom photos. Credit R Merdith



Water hyacinth infestations can be reduced by using biological control agents such as these weevils - *Neochetina* species.

Credit: Mic Julien



Credit: CSIRO



WORKING BEES

-Why not get out and get involved in one of our local groups?

For all Landcare Working Bees please wear protective clothing - long pants, long-sleeved shirt, closed-in shoes, hat, gloves and bring water, sunscreen, and insect repellent. Please always contact the group co-ordinators before attending a working bee as plans do change!

Bangalow Land and Rivercare, Bangalow

WHEN: every Saturday 8:30am

WHERE: find out from

CONTACT: Noelene Plummer bangalowlandcare@gmail.com 0431200638 66874470

Green and Clean Awareness Team, Byron Bay

WHEN: 3rd Sunday of the month 9:00am

WHERE: Meet Main Beach, Byron Bay

CONTACT: Veda Turner vedaturner@gmail.com 0427 857 991

Heritage Park Landcare, Mullumbimby

WHEN: Saturdays 9:00am – 11:00 am

WHERE: Heritage Park, Mullumbimby

CONTACT: Diana Hughes bromspot@gmail.com

Jinangong Landcare, Ocean Shores

WHEN: 1st Sunday of the month

WHERE: The Tunnel Road, Ocean Shores

CONTACT: Ian Parer ianparer@hotmail.com

Mullum Town Landcare, Mullumbimby

WHEN: last Sunday of the month

WHERE: find out from John Tann

CONTACT: John Tann johntann99@gmail.com

Ocean Shores Landcare, Ocean Shores

WHEN: each Friday at 8.30 – 11.00 am (8.00am DST)

WHERE: corner of Yallakool Drive and Warrambool Road, Ocean Shores

CONTACT: David Kemp dnkemp77@gmail.com 0427 650 861

Tallowood Ridge Locality Landcare, Tallowood Ridge Mullumbimby

WHEN: Second Saturday of the month from 3pm (winter), 4pm (summer).

WHERE: Gathering Tree Pocket Park, Cockatoo Cres Tallowood Ridge Estate

CONTACT: Joanne McMurtry jmcmurtry@bigpond.com

South New Brighton Dunecare

WHEN: 1st Friday of the month 1:30pm - 4:30pm

WHERE: Meet at southern end of the Esplanade at the Strand beach access point.

CONTACT: Robyn Bolden robyn.bolden@optusnet.com.au 6680 1970

Suffolk Park Dunecare

WHEN: 1st Saturday of the month

CONTACT: Helen Brown hellyh@bigpond.com 6685 4964

Tyagarah Landcare

WHEN: Each Thursday 9:00am – 11:00am

WHERE: 23 Prestons Lane, Tyagarah

CONTACT: Bela Allen bela_allen@yahoo.com 6684 7113

Can't find a group near you? We have many other groups who meet on an ad hoc basis (contact us for more details) or if there isn't an existing group in your neighbourhood or you are interested in looking after a particular area, BVL can help you to form a locality group under the BVL umbrella.

LINKS

- Arakwal <http://arakwal.com.au/>
- Border Rangers Alliance http://www.greasternranges.org.au/border_ranges/overview/overview
- Bangalow Koalas <http://www.bangalowkoalas.com.au/>
- Bangalow River and Landcare <http://www.bangalowlandcare.org.au/>
- Big Scrub Landcare <https://www.bigscrubrainforest.org.au/>
- Brunswick Valley Landcare <http://www.brunswickvalleylandcare.org.au/>
- Byron Bird Buddies <http://www.byronbirdbuddies.com.au/>
- Byron Community College <http://www.byroncollege.org.au/>
- Byron Shire Council <http://www.byron.nsw.gov.au/>
- EnviTE www.envite.org.au
- Environmental Trust <http://www.environment.nsw.gov.au/grants/envtrust.htm>
- Friends of the Koala www.friendsofthekoala.org
- Federal Landcare Inc federalandcare@gmail.com
- Local Land Services www.northcoast.lls.nsw.gov.au
- North Coast Local Land Services <http://northcoast.lls.nsw.gov.au/>
- Border Ranges Richmond Valley Landcare www.brrvln.org.au
- Mullumbimby Community Gardens <http://mullumcommunitygarden.wordpress.com/>
- North Coast Nature <http://www.northcoastnature.org.au/>
- Richmond Landcare Inc. <http://www.richmondlandcare.org/>
- Rous County Council (formerly Far North Coast Weeds) <http://rous.nsw.gov.au/>
- Soilcare http://www.soilcare.org_
- Tweed Landcare Inc. <http://www.tweedlandcare.org.au/>
- Wilson's Creek Huonbrook Landcare <http://www.wilsonscreeklandcare.mullum.com.au/>

**For information about Landcare or other natural resource issues in Byron shire please contact
Landcare Support Officer, Alison Ratcliffe 6626 7028
(Mon, Tues, Wed)**

aratcliffe@byron.nsw.gov.au

Project Officer, Rochelle Merdith 6626 7201 rmerdith@byron.nsw.gov.au

www.brunswickvalleylandcare.org.au

