



Newsletter for Landcare and Dunecare in Byron Shire



<http://www.brunswickvalleylandcare.org.au/>

May 2020

BVL News

BVL been busy with administrative updates, applications for new grants and collaborations with new partners. Although gatherings of 10 people outside are now allowed we are taking a cautious approach to resuming volunteer activities. Our bush regen contractors have continued to work on and the committee has continued their monthly meetings via zoom.

Sadly we all missed the **Mothers Day Community Tree Planting** this year. We have made the decision to postpone it to Mothers Day 2021 owing to Covid restrictions and the uncertainty around when large community gatherings will be allowed. We are all looking forward to a big one next year.



The big change we have been working on is our success in achieving **Registered Charity and Deductible Gift Recipient Status**. This enables BVL to provide tax receipts for donations. We have been working on updates to the website to allow simplified membership applications and donations so watch this space next month for how to make your end of tax year donation!

Ewingsdale Wetlands

Wetlands and creeks are a vital part of good water quality and biodiversity, bringing many benefits to our lives and our agricultural pursuits. And they look nice too!

Simpsons Creek is a regionally significant creek, its course now less defined as a result of vegetation clearing and agriculture. It starts way up behind Ewingsdale, under the road, then winds its way northwards, through Tyagarah, and eventually forming the southern estuary at Brunswick Heads and the Brunswick River.

A few landholders have restored sections of the Creek (native fish such as mullet have since been sighted!), but a lot of the Creek has had its fringing vegetation removed, affecting its biodiversity and water quality.

The Ewingsdale wetlands were planted by Brunswick Valley Landcare and The Farm a few years ago on a section of Simpsons Creek alongside Ewingsdale Rd, opposite the new ambulance station.

With maintenance the plantings have thrived and improvements to water quality in the form of clearer water, abundant insect and aquatic life and a pleasing landscape with birds nesting in nest boxes installed nearby have resulted.

Periodic maintenance of any new plantings is needed, so BVL and The Farm (socially distanced and sanitised!) undertook a few days of brushcutting, weed removal and identification and marking of emerging native shrubs and trees.

The wetlands are looking great and extensions are planned along Simpsons Creek.



Free Webinar

Flames in the rainforest: bushfire impacts and restoration in northern NSW



Tuesday 2nd June 2020 from 11am-12pm (AEST).

Join us to hear from three leading experts who will be discussing the impact of the recent wildfires on our northern rainforests and what we can do to help in their recovery.

Learn about:

- Fire management and fire ecology in rainforests
- Recent bushfire impacts of 2019-2020 on rainforests, old-growth habitat, weeds and koalas
- New resources and tools that could help you tackle weed infestations and restoration efforts post-fire
- Opportunity to ask experts questions and participate in an online discussion

Presenters:

- **Dr Tein McDonald**, President of the Australian Association of Bush Regenerators on "*Bush regenerators helping post-fire recovery*";
- **Dailan Pugh OAM**, Conservationist on "*Impacts of the wildfires on koalas and rainforest in north eastern NSW*"; and
- **Dr Ross Peacock**, Senior Research Fellow at Macquarie University on "*The impacts of the 2019/20 fire season on rainforest communities in northern NSW*".

Registrations essential, please register for free by 31st May: <https://www.eventbrite.com.au/e/flames-in-the-rainforests-webinar-tickets-102743225754>



The latest issue of the Wilsons Creek Huonbrook Landcare Newsletter is now available.

<http://brunswickvalleylandcare.org.au/wp-content/uploads/2016/06/WCHL-newsletter-April-2020.pdf>



Each category winner will receive a \$1,000 cash prize, with a whopping \$5,000 cash going to the portfolio winner courtesy of principal sponsor, Nikon Australia.

The awards will run until August 3rd, for updates and more information, check out the awards website [here](#).



LANDCARE WELLBEING SURVEY

UNDERSTANDING THE BENEFITS OF BEING INVOLVED IN LANDCARE ACTIVITIES

For more than 30 years, Landcare Australia has supported the outstanding work of the thousands of Landcare and other community groups across the country, along with Landcare facilitators, members, farmers, landholders and other volunteers.

The environmental benefits of Landcare groups' activities are often quantified and promoted. However, we all know that grass-roots Landcare groups provide deeper benefits for their communities and contribute to Australia's identity.

Together, we can assess and communicate those benefits to a wider range of stakeholders, ensuring that the real value of Landcare is recognised and receives the additional support we know is strongly justified.

As part of this, Landcare Australia has partnered with KPMG to better understand the nature and extent of the benefits experienced by the people involved in Landcare groups or engaged in Landcare activities.

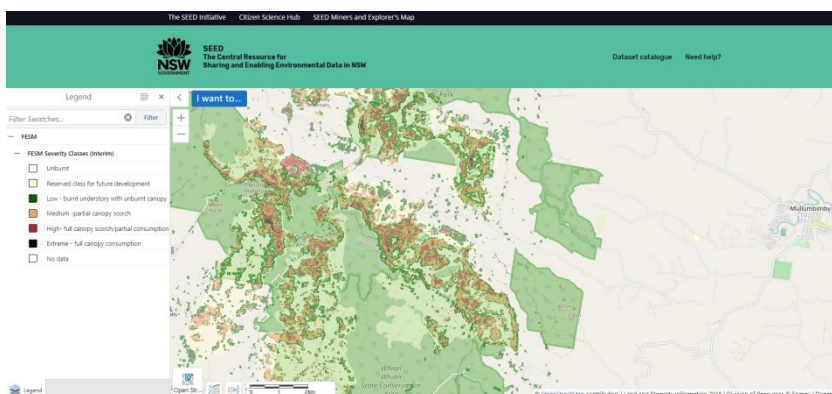
We would really appreciate understanding the benefits of your experience with Landcare. Please complete this short survey, which should take only 10-15 minutes.

The results from this study will be made publically available. Your insights will strengthen the value of the work and help all involved in the volunteer Landcare movement to generate a stronger case for funding support into the future for all.

Should you have any questions about this survey, please feel free to contact Melissa Higgins from Landcare Australia via email at melissa.higgins@landcareaustralia.com.au. The survey will remain open for two weeks, closing at 11.59pm AEST Tuesday 26 May, 2020.

To take the survey: <https://www.surveymonkey.com/r/LPZMKD7>

Fire Extent and Severity Mapping (FESM) available on SEED Portal



Fire severity is a metric of the loss of biomass caused by fire. In collaboration with the NSW Rural Fire Service, DPIE Remote Sensing & Regulatory Mapping team has developed a semi-automated approach to mapping fire extent and severity through a machine learning framework based on sentinel 2 satellite imagery. The statewide severity map has standardised classes to allow

comparison of different fires across the landscape.

<https://datasets.seed.nsw.gov.au/dataset/fire-extent-and-severity-mapping-fesm>

STORIES to inspire and give you hope

Scientists Successfully Develop 'Heat Resistant' Coral to Fight Bleaching [Eco Voice](#)

A team of scientists has successfully produced in a laboratory setting a coral that is more resistant to increased seawater temperatures.

The team included researchers from CSIRO, Australia's national science agency, the Australian Institute of Marine Science (AIMS) and the University of Melbourne.

Corals with increased heat tolerance have the potential to reduce the impact of reef bleaching from marine heat waves, which are becoming more common under climate change.

IMAGE: *Coral bleaching*. Credit: Chris Jones/CSIRO

Read the full article here: <http://www.ecovoice.com.au/scientists-successfully-develop-heat-resistant-coral-to-fight-bleaching/>



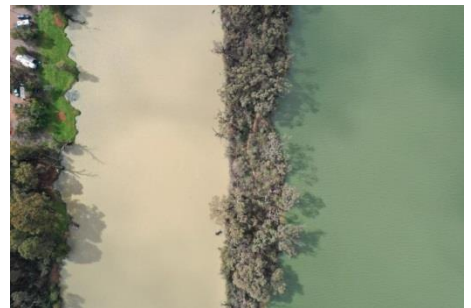
Darling River reaches River Murray for first time in two years [ABC Weather](#) By [Kate Doyle](#)

After wonderful drenching rain in recent months, the Darling River is flowing again for the first time in two years.

And as with most things about the Murray-Darling system, what happens next is just about as clear as the Darling itself.

Photo : *Chris Graham*

Read the full article here: <https://www.abc.net.au/news/2020-05-20/darling-river-reaches-river-murray-so-what-happens-now/12249376>



Fish faeces reveals which species eat crown-of-thorns [Eco Voice](#)

Great Barrier Reef research finds the destructive starfish is eaten more often than thought.

Crown-of-thorns starfish are on the menu for many more fish species than previously suspected, an investigation using fish poo and gut goo reveals.

The finding suggests that some fish, including popular eating and aquarium species, might have a role to play in keeping the destructive pest population under control.

The native starfish (*Acanthaster solaris*) is responsible for widespread damage to the Great Barrier Reef. Since 1962 its population has surged to plague proportions on three occasions, each time causing the loss of large amounts of hard coral. A fourth outbreak is currently underway.

Increasing the amount of predation on starfish has long been touted as a potential solution to preventing outbreaks. However, aside from a mollusc called the Giant Triton (*Charonia tritonis*), identifying what eats it has been a challenging task.

Read the full article here: <http://www.ecovoice.com.au/fish-faeces-reveals-which-species-eat-crown-of-thorns/>



REGENERATIVE AGRICULTURE

'Korean natural farming' method boosted my yield, macadamia grower says

Wide Bay macadamia grower Kate Rose is crediting 'Korean natural farming' for a large increase in crop yield.



Read the full article here: <https://www.abc.net.au/news/rural/2020-05-06/korean-natural-farming-in-wide-bay/12216806>

Human waste research trial yields promising results in Victorian subsoil **ABC Rural** By **Jane McNaughton**

Researchers are trialling the use of a new material obtained from human waste to improve soil fertility and increase crop productivity in grain-growing regions.



Researchers say a project to improve crop yield by fertilising subsoil with human waste is achieving promising results. The use of human waste represents a cheap alternative to the ameliorates some farmers use to deal with hard soil. The Victorian team wants to extend the trial period to better understand the long-term outcomes of the technique

Biosolids, which are collected from dry sewage, can be used as a possible solution to the significant subsoil issues hampering the Victorian grain industry. In addition to boosting grain production, the project has the potential to save farmers money because biosolids are available for free from state water supplies.

Read the full article here: <https://www.abc.net.au/news/rural/2020-04-27/human-waste-for-grain-production-research-trial/12185102>

Plant root hairs key to reducing soil erosion

Researchers from the Universities of Bristol and Exeter have found compelling evidence that when root hairs interact with the surrounding soil they reduce soil erosion and increase soil cohesion by binding soil particles.



The increased demand for agriculture has led to forests and natural grasslands being converted to farm fields and pastures. However, many of the plants grown, such as coffee, cotton and palm oil, can significantly increase soil erosion.

Read the full article here: <http://www.bris.ac.uk/math/news/2020/plant-root-hairs.html>

Antimicrobial Agriculture Webinar

This presentation covers the importance of microbial communities to regenerative agriculture, and how to support those communities. John Kempf, from Advancing Eco Agricultural, discusses the topic of soil compaction, its causes and symptoms, and how it can be prevented.



Watch to learn:

- * The 3 rules John learned from Jerry Hatfield on no-till farming
- * The steps to removing soil compaction
- * The soil management practices that keep compaction from reoccurring.

46 minutes long [Watch and listen to the webinar here.](#)

Land for Wildlife site inspections for new applications has been on hold, but we hope to resume these very shortly. There are currently 8 new applications to process.

Decline in 'successful' bird species rings alarm bells [ABC Central West](#) By [Micaela Hambrett](#)

BirdLife Australia is concerned magpie and kookaburra numbers are declining. Theories include the use of second-generation rodenticides, changing agricultural practices, climate change and more frequent droughts.



So when dwindling observations were recorded across 15 years of BirdLife Australia surveys, alarms bells started ringing. Mr Dooley, BirdLife Australia's national public affairs manager, said magpies were "open grassland and woodland birds".

<https://www.abc.net.au/news/2020-04-27/magpies-and-kookaburras-in-decline-says-birdlife-australia/12155248>

Mistletoebird

The pre-poop dancing and bum wiping routine of the Mistletoebird plays a vital role in the life cycle of this little native bird with its highly adapted diet.

After these sweet little red-breasted birds eat mistletoe berries, it defecates by twisting its body sideways, then purposely wipes its poop on the branch it's perched on. The seeds of the berries, which are still intact, are sticky after passing through the digestive tract of the bird. These sticky seeds cling to the branch of their host tree and grow.



The parasitic mistletoe only grows high up on other trees and so this relationship ensures both the bird and bush can survive.

<https://www.natureaustralia.org.au/what-we-do/our-priorities/wildlife/wildlife-stories/10-weird-and-wonderful-wildlife-of-australia/>

FUNDING

Do you have a great project and need funds to make it happen?

On the Brunswick Valley Landcare website there are some handy tips on how to be successful with grant applications. Below is a summary of grants which are currently accepting applications and ones that are anticipated to open within the next month. <http://brunswickvalleylandcare.org.au/funding/>

Wildlife and Habitat Bushfire Recovery Program

The Wildlife and Habitat Bushfire Recovery Program open competitive grant opportunity is now open. Up to \$12 million is available under the program.

To ensure organisations are given enough time to apply, grants will be staged over two tranches, with the first opening on 1 April, 2020 and closing on 22 April, 2020. Tranche 2 is anticipated to open on 23 April, 2020 and close on 28 May, 2020.

<https://www.environment.gov.au/biodiversity/bushfire-recovery/open-grant-program>



Australian Government
Department of Agriculture,
Water and the Environment

Weeds of the Month

Staying home? Coronavirus may have changed the way we live, but perhaps having more time in the backyard might be just what the doctor (and the Landcarers) ordered.

Before winter seeding, now is the perfect time to tackle your backyard weeds. The drought slowed down their growth but late summer rains have seen the weeds in our backyards making the most of the warm temperatures with flourishing growth.

The Tweed, Brunswick Valley and Richmond Landcare networks are encouraging everyone to take an extra step to help secure the coast from the threat of weeds: it's time for a Backyard Weed Blitz!



Bush regenerators are still out there working to protect our native environments, and though you may not be able to get out into the bush, you can still do your bit to protect it. Weeds can spread very easily from your yard (no matter how small) by wind, water and birds/beasts. By controlling even small infestations you can fulfil your 'General Biosecurity Duty' and help manage our shared responsibility to reduce the threat of weeds across the region.

Did you know that you have a general biosecurity duty in your home garden? Under the Biosecurity Act, you're expected to know the basics about the spread of pests and diseases, and the problem pests in your local area. The general biosecurity duty supports the principle of shared responsibility, and means everyone is doing what is reasonable for them to do to prevent, eliminate or minimise biosecurity risks.

A biosecurity risk is anything that could increase the impacts of pests, diseases, weeds or contaminants on the economy, environment or community. The [North Coast Regional Strategic Weed Management Plan 2017–2022](#) identifies a range of invasive plant species as priority weeds. The plan identifies regional priority weeds, including management objectives and "outcomes to demonstrate compliance with the General Biosecurity Duty", which for those weeds clearly define expectations for land managers to meet their General Biosecurity Duty.

Rather than spreading effort across the vast range of weeds, targeted control of specific biosecurity threats can have a much greater impact. During this Backyard Weed Blitz we're setting our sights on four key coastal weeds:

- Asparagus weeds (*Asparagus* species)
- Bitou bush (*Chrysanthemoides monilifera* subsp. *Rotunda*)
- Cape Ivy (*Delairea odorata*)
- Glory Lilly (*Gloriosa superba*)

As a part of the 'Community Based Weeds' Project in the Ballina, Byron and Tweed Local Government Areas, Landcare groups and professional bush regenerators have been targeting these weeds in key coastal sites over the past 6 months. By joining your Backyard Blitz efforts to this concerted effort, we can together reduce the spread of these species across the coast.

Target #1: **Asparagus Weeds**

With decorative berries and ferny leaves, you can see why the Asparagus weeds (there are many types) were introduced as ornamental plants. They occur very commonly in backyards across the coast, and can out-compete native plants in the bush. Control by manual removal or herbicide. For more: <https://weeds.dpi.nsw.gov.au/Weeds/AsparagusWeeds>



Video of control methods: <https://www.youtube.com/watch?v=6xQLT7pgSZg>

Target #2: **Bitou Bush**

This bright green leaved and yellow-flowered bush has been the subject of significant control along our coastline, but pockets remain in both public and private land. By removing it from your place, you can help our Coastcarers keep our beaches beautiful. For more:

<https://weeds.dpi.nsw.gov.au/Weeds/BitouBush>



Video of control methods: <https://youtu.be/DqdwuHIOG-A>

Target #3: **Cape Ivy**

You might not have seen so much of this weedy vine on the North Coast yet (and hopefully you won't), but it is a typical urban escapee. It's light fluffy seeds spread by wind and water, and it will even grow from sections of the stems. Best controlled now while flowering before seeds set.

For more:

<https://weeds.dpi.nsw.gov.au/Weeds/Capelvy>



Target # 4: **Glory Lilly**

With it's unusual upside-down flower, Glory Lilly can be challenging to control due to it's annual disappearing trick: the bright green glossy vines die back over Winter, re-sprouting from a tuber in Spring. Now is a great time to get out and remove seed heads before killing the vine. Blitz it with foliar spray or hand removal of the whole tuber. For more: <https://weeds.dpi.nsw.gov.au/Weeds/GloryLily>



Video of control methods: <https://youtu.be/QdyrOGjV-SI>

Organised by Tweed Landcare, Brunswick Valley Landcare and Richmond Landcare, this project is funded by North Coast Local Land Services and Rous County Council, with support from North Coast Regional Landcare Network under the 'Stakeholder partnerships for the delivery of the North Coast Regional Strategic Weed Management Plan 2017-2022' project. This program engages local Landcare groups to complete on-ground weed control works that complement the activities of Local Control Authorities and assist in the implementation of the North Coast Regional Strategic Weed Management Plan 2017-2022.

WORKING BEES - why not get out and get involved in one of our local groups?

For all Landcare Working Bees please wear protective clothing - long pants, long-sleeved shirt, closed-in shoes, hat, gloves and bring water, sunscreen, and insect repellent. **Please always contact the groups co-ordinators before attending a working bee as plans do change!**

Bangalow Land and Rivercare, Bangalow

WHEN: every Saturday 8:30am
WHERE: find out from Liz Gander
CONTACT: Liz Gander bangalowlandcare@gmail.com 66871309

Green and Clean Awareness Team, Byron Bay

WHEN: 3rd Sunday of the month 9:00am
WHERE: Meet Main Beach, Byron Bay
CONTACT: Veda Turner vedaturner@gmail.com 0427 857 991

Heritage Park Landcare, Mullumbimby

WHEN: alternate Saturdays 9:00am – 11:00 am
WHERE: Heritage Park, Mullumbimby
CONTACT: Diana Hughes bromspot@gmail.com

Jinangong Landcare, Ocean Shores

WHEN: 1st Sunday of the month
WHERE: The Tunnel Road, Ocean Shores
CONTACT: Ian Parer ianparer@hotmail.com

Mullum Town Landcare, Mullumbimby

WHEN: last Sunday of the month
WHERE: find out from Rita de Heer
CONTACT: Rita de Heer 02 6684 1495 ritadeheer7@gmail.com

Ocean Shores Landcare, Ocean Shores

WHEN: each Friday at 8.30 – 11.00 am (8.00am DST)
WHERE: corner of Yallakool Drive and Warrambool Road, Ocean Shores
CONTACT: David Kemp dnkemp77@gmail.com 0427 650 861

South New Brighton Dunecare

WHEN: 1st Friday of the month 1:30pm - 4:30pm
WHERE: Meet at southern end of the Esplanade at the Strand beach access point.
CONTACT: Robyn Bolden robyn.bolden@optusnet.com.au 6680 1970

Suffolk Park Dunecare

WHEN: 1st Saturday of the month
CONTACT: Helen Brown hellyh@bigpond.com 6685 4964

Tyagarah Landcare

WHEN: Each Thursday 9:00am – 11:00am
WHERE: 23 Prestons Lane, Tyagarah
CONTACT: Bela Allen bela_allen@yahoo.com 6684 7113

Can't find a group near you? We have many other groups who meet on an ad hoc basis (contact us for more details) or if there isn't an existing group in your neighbourhood or you are interested in looking after a particular area, BVL can help you to form a locality group under the BVL umbrella.

LINKS

- Arakwal <http://arakwal.com.au/>
- Border Rangers Alliance <http://www.greasternranges.org.au/border-ranges/overview/overview>
- Bangalow River and Landcare <http://www.bangalowlandcare.org.au/>
- Big Scrub Landcare <https://www.bigscrubrainforest.org.au/>
- Brunswick Valley Landcare <http://www.brunswickvalleylandcare.org.au/>
- Byron Bird Buddies <http://www.byronbirdbuddies.com.au/>
- Byron Community College <http://www.byroncollege.org.au/>
- Byron Shire Council <http://www.byron.nsw.gov.au/>
- EnviTE www.envite.org.au
- Environmental Trust <http://www.environment.nsw.gov.au/grants/envtrust.htm>
- Friends of the Koala www.friendsofthekoala.org
- Local Land Services www.northcoast.ils.nsw.gov.au
- North Coast Local Land Services <http://northcoast.ils.nsw.gov.au/>
- Border Ranges Richmond Valley Landcare www.brrvl.nsw.gov.au
- Mullumbimby Community Gardens <http://mullumcommunitygarden.wordpress.com/>
- North Coast Nature <http://www.northcoastnature.org.au/>
- Richmond Landcare Inc. <http://www.richmondlandcare.org/>
- Rous County Council (formerly Far North Coast Weeds) <http://rous.nsw.gov.au/>
- Soilcare <http://www.soilcare.org>
- Tweed Landcare Inc. <http://www.tweedlandcare.org.au/>
- Wilson's Creek Huonbrook Landcare <http://www.wilsonscreeklandcare.mullum.com.au/>

For information about Landcare or other natural resource issues in Byron shire please contact

Landcare Support Officer, Alison Ratcliffe

6626 7028 0421 244 640 (Monday, Tuesday, Wednesday) aratcliffe@byron.nsw.gov.au

Project Officer, Rochelle Merdith

6626 7201 (Friday) rmerdith@byron.nsw.gov.au



This newsletter is supported by Byron Shire Council.

