




# Newsletter for Landcare and Dunecare in Byron Shire

<http://www.brunswickvalleylandcare.org.au/>

 Connect on facebook

**October 2015**

<b>OCTOBER</b>	9	Monitoring and Evaluation Workshop
	16	"Pick that weed and put it in the bin!" Workshop
	18	"Living the dream – saving the coastal koala from extinction" field day
	19-25	Bird Week
<b>NOVEMBER</b>	3	My Local Native Garden Seminar
	6-8	Biological Farming Conference

## Simpsons Sofa

Brunswick Heads was busy over the long weekend with the first Brunswick Nature Sculpture Walk.

Joanne Mott created the permanent sculpture "Simpsons Sofa" with help from Brunswick Valley Landcare and Byron Shire Council. The sculpture was the winner of the first Brunswick Nature Sculpture Walk Prize for 2015.

We held a community planting day with students from Brunswick Heads Public School and planted 100 native species of low growing groundcovers on one side of the mound, the other side being covered in Queensland blue couch.

It was wonderful to watch people over the weekend interacting with the sculpture. Adults lounging on it and enjoying the view and children running along the top! Everyone I spoke to loved it. Congratulations Jo for a fantastic creation.



# FUNDING

## Habitat Action Grants

Angling clubs, individuals, community groups, local councils and organisations interested in rehabilitating fish habitats in freshwater and saltwater areas throughout NSW can apply for grants.

Habitat rehabilitation projects which may be funded include:

- removal or modification of barriers to fish passage
- rehabilitation of riparian lands (river banks, wetlands, mangrove forests, saltmarsh)
- re-snagging waterways with timber structure
- removal of exotic vegetation from waterways
- bank stabilisation works
- reinstatement of natural flow regimes

**Applications will close at 5 pm Friday 16 October 2015.** For further information please contact

[fish.habitat@dpi.nsw.gov.au](mailto:fish.habitat@dpi.nsw.gov.au)

<http://www.dpi.nsw.gov.au/fisheries/habitat/rehabilitating/ahr-grants-program>



## 2016 Science and Innovation Awards

Grant applications are now open for the 2016 Science and Innovation Awards for Young People in Agriculture, Fisheries and Forestry. If you're 18-35, this is your chance

to apply for a grant of up to \$22,000 to fund your project on an innovative or emerging scientific issue that will benefit Australia's primary industries. The Science Awards encourage young scientists, researchers and innovators with original projects that will contribute to the ongoing success and sustainability of Australia's agricultural, fisheries and forestry industries.

Applications close 5pm AEDT **Friday 9<sup>th</sup> October 2015**. Need advice? Contact the Science Awards team at 02 6272 2260 / 6272 2303. <http://www.agriculture.gov.au/abares/conferences-events/scienceawards>



## Farm Innovation Fund

This fund, managed by the Rural Assistance Authority, aims to help primary producers meet changing seasonal conditions by identifying and addressing risks to their farming enterprise, improving permanent farm infrastructure and ensuring long-term productivity and sustainable land use. Loans are subject to funds being available. <http://www.raa.nsw.gov.au/assistance/farm-innovation-fund>

## Screenworks Regional Producer Elevator Program

The [Regional Producer Elevator Program](#) will provide tailored professional development and placement opportunities for two emerging producers living in the Northern Rivers. The program is open to producers of all genres, including (but not limited to) TV drama producers, documentary producers and children's television producers. The program would also suit aspiring Creative Producers who are established writers looking to further develop their producing skills.



**Applications close Monday 12 October 2015.** Information about the program and how to apply is available from the [Screenworks Northern Rivers](#) website.

# Monitoring and Evaluation Workshop



## Brunswick Valley Landcare invites you to a Monitoring and Evaluation workshop:

- Learn essential vegetation classification and measurements skills
- Learn practical information for monitoring both revegetation and regeneration projects
- Discover the importance of good M&E and how this can improve your project outcomes and business success

### Afternoon Tea Provided

**Byron Shire:** Friday the 9<sup>th</sup> of October 2015  
Mullumbimby (address provided with RSVP)

**Time:** 1:30 – 5:00pm

**RSVP:** By Monday the 5<sup>th</sup> of October

**Contact:** Justin Mallee, 02 66840212 or [j.ecologic@gmail.com](mailto:j.ecologic@gmail.com)



Brunswick Valley  
**Landcare**  
Inc.

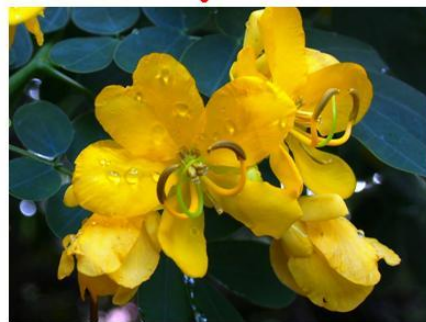


Friday 16th October  
2015  
9.00—12.00

The Conference Room  
Byron Shire Council  
70-90 Station Street  
Mullumbimby



## Free Workshop



## Pick that weed and put it in the bin!

### Want to know more about our local weeds?

Many people have plants in their gardens that have beautiful flowers or fruits. What they don't know is that some of these are environmental weeds and that they threaten the habitat of our native animals

Learn to identify these weeds and what you can do to control them.

Now that we have our new green organics bins it's easy to dispose of your weeds to prevent them spreading further.

Bring along any weed samples you would like identified.

Lucy Wilson from Byron Shire Council will be on hand to answer any questions you may have about the new Green Organics Bins.

### Free Weed ID book for all participants!

### Morning tea will be provided.



### Bookings are essential

please contact:

Alison Ratcliffe

02 6626 7028

[alison.ratcliffe@byron.nsw.gov.au](mailto:alison.ratcliffe@byron.nsw.gov.au)



This event is supported by Brunswick Valley Landcare through funding by the Australian Government and Byron Shire Council  
<http://brunswickvalleylandcare.org.au/>



**FREE Field day**  
**Living the dream....**  
**saving the coastal Koala from extinction**



**Date:** Sunday 18th October 2015  
**Time:** 1:00 pm – 4:30 pm  
**Location:** Tyagarah (details will be provided upon booking)  
**Bookings Essential:** Please contact Jo Green, Byron Shire Council 02 6626 7068  
[joanne.green@byron.nsw.gov.au](mailto:joanne.green@byron.nsw.gov.au) or Bela Allen, Brunswick Valley Landcare 02 6684 7113 [bela\\_allen@yahoo.com](mailto:bela_allen@yahoo.com)

Come to a field day to see three properties in Tyagarah where different styles of work have been done to improve the habitat for wildlife, particularly Koalas.

Learn to identify the important Koala food trees.

Information will be provided about the issues facing our wildlife and the role of wildlife corridors in saving our threatened fauna. Different methods of weed control and maintenance will be discussed. Hear from experts about what is being done to save the coastal Koala in Byron Shire from extinction and learn what you can do to help.

**Light refreshments on arrival will be provided.**

Please bring water and wear sturdy shoes and a hat.

*This project is supported by the Australian Governments 25th Anniversary Landcare Grant and Brunswick Valley Landcare.*





## Bird Week – Tyagarah National Park Bird & Nature Walk



Wednesday October 21st 2015

1. Walk from Brunswick Surf Club to Simpson's Creek (2.5km) and walk back along the same track or along the beach.
2. Walk from Brunswick Surf Club to Grays Lane 7.5 km – if people wish to organize their own transport.

Time	Event Details
8.00 am	Meet in the carpark at the Brunswick Head Surf – short brief
8.00 – 9.30	Walk to Simpson's Creek – identifying birds and plants on the way and 20 minute surveying for Aussie Backyard Bird Count
10.00	Morning Tea supplied by Byron Bird Buddies & delivered by NP's
10.00 - 10.30	Presentation from National Parks Discovery Rangers on the Tyagarah National Park management with a focus on long-nose potoroo & shorebird management.
12.15 – 12.30	Back in carpark along the beach or track or pick-up in Grays Lane (Black Rock Road) if own transport has previously been organized.

**What to Bring:** wear sun hat and good walking shoes, and bring water bottle, binoculars, camera and bird field guide if you have them.

**Registration by Friday 16<sup>th</sup>** for catering purposes

**Contacts & Registration**

byronbirdbuddy@gmail.com

Mob 0428864378 or 66803279



Brunswick Valley  
**Landcare**  
Inc.

## My Local Native Garden Seminar

Tuesday 3rd November 6pm - 9pm

at Byron Shire Council Chambers, Station Street Mullumbimby

As part of Byron Shire Council's Sustainability Seminars BVL will be holding an evening talking about local native gardens. We will talk about landscape design, good plants to use and how to attract wildlife to your garden. Bookings essential please contact Alison Ratcliffe 02 6626 7028 [alison.ratcliffe@byron.nsw.gov.au](mailto:alison.ratcliffe@byron.nsw.gov.au)



Professional Workshop on  
**Aboriginal Scar Trees: Significance,  
Conservation and Management of  
Veteran Eucalypts in the Landscape**

**Trees of Significance for Traditional Owners,  
Biodiversity and the Community**

**Friday October 30th – 8:30am to 4:30pm  
Room B1: 21/22, Wollongbar TAFE**

This workshop will explore the values that veteran scar trees play in the landscape and how these trees can be protected and managed alongside other uses of the land.

**Speakers include:**

- **Traditional Owners** who will discuss what is a scarred tree; what this can mean to them and cultural reasons for protecting these trees.
- **The Veteran Tree Group Australia** who will cover the value of very old (veteran) trees for biodiversity and how to protect and manage them in varied landscapes.
- **Landscape Ecologists** who will briefly discuss the changes in the landscape in the Northern Rivers area over the past 200 years and the importance of retaining very old (veteran) trees.

The workshop will be divided into two sessions, with the morning session held at Wollongbar TAFE and the afternoon session inspecting scar and veteran trees at Wardell and Ruthven to explore ways of management.

**Knowledge Holder Ashley Moran**

**Cost: Fee of the workshop is \$50.00**

**If you are interested in attending please either:**

- Register on the THECA (The Hut Environmental and Community Association) [www.theca.asn.au](http://www.theca.asn.au)
- Contact Greg Siepen on 0455 840 004
- Email [info@theca.asn.au](mailto:info@theca.asn.au)

**Supported by the Bjarne K Dahl Trust; THECA and Wollongbar TAFE**



# Biological Weed Control morning at:

**Bangalow Showground Hall**

**ALL WELCOME**

**Thursday 29<sup>th</sup> October 2015 9.30am – 1pm**

**Biological control updates and  
limited distribution of biological agents**

**Giant Parramatta Grass, Giant Rat's Tail Grass, Cat's Claw Creeper, Crofton Weed, Madeira Vine, Lantana and Salvinia.**

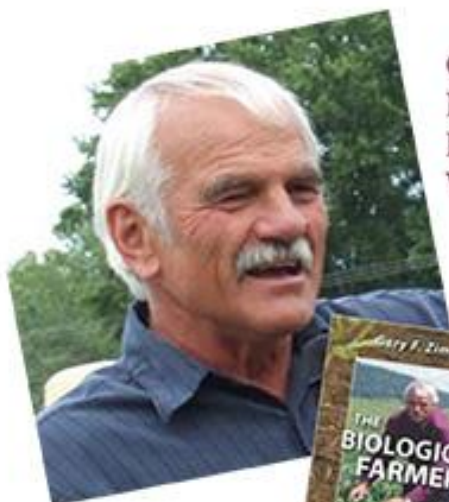
<i>Timing</i>	<i>Activity</i>	<i>Notes</i>	<i>Speaker</i>
9.30am	Arrive and register (10m) Meet and greet Sign on and register for bio agents		
9.40am	Welcome from Chair	Overview of day, OH&S, Introductions, toilet locations and emergency assembly area.	Philip Courtney Manager FNCW
9.50am	Crofton Weed Biological Control	Community participation in releases of a new biocontrol agent for crofton weed in NSW	Dr Louise Morin Research Scientist CSIRO
10.15am	Giant Parramatta Grass (GPG)	Information and update on the GPG disease	David Officer Research Agronomist DPI Grafton
10.50am – 11.30am	Morning Tea Break (40m)		
11.30am	Overview of current Weed Biological Control Programs	Updates on Cats Claw Creeper, Madeira Vine, and Lantana agents.	Royce Holtkamp Consultant
12.00pm	Salvinia Biological Control	Update on the integrated control of Salvinia and how best to use the weevils.	Rod Ensbey Invasive Species Officer DPI Grafton
12.15pm	The role of Far North Coast Weeds	Overview of programs, inspections, extension, control ,the weed invasion curve in relation to FNCW	Rhett Patrick Senior Weed Officer
12.30pm	Wrap up	Biocontrol distribution	Chair FNCW

Please RSVP on (02) 6623 3847. For more information see: [www.fncw.nsw.gov.au](http://www.fncw.nsw.gov.au)



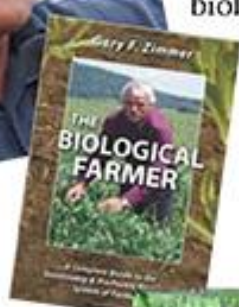
# National Biological Farming Conference and Expo 2015

6 - 8 November — Southern Cross University, Lismore, NSW Australia



Gary Zimmer,  
MidWestern  
BioAg,  
Wisconsin

'The future  
of farming is  
biological'



Bob Shaffer,  
Soil Culture Consulting,  
Hawaii

'The Cover Crop  
Revolution', 'What Is  
Quality Compost?' and  
'Transitioning to Biological  
Farming Practices'



Dr Greg Bender,  
Australian Soil  
Management

'The Plants Perspective:  
What Do They Want From  
Soils and How Can We  
Help?'

## REGISTRATIONS

EARLY BIRD  
BEFORE 14 September 2015

\$200.00 + GST

FROM 14 September 2015

\$250.00 + GST

Conference details  
Sponsors ~ Program  
35 Exhibitors ~ 25 Speakers  
Pre-Conference Tours  
Post Conference Workshops  
Travel & Accommodation

## CONFERENCE SPONSORS

Australian Government's  
National Landcare Programme,  
Richmond Landcare,  
Environmental Analysis Lab,  
Southern Cross University,  
North Coast Local and Services,  
Lismore City Council,  
Bayer CropScience,  
AusQual,  
Horticulture Innovation Australia,  
SOFT AGRICULTURE,  
Australian Organics Recycling Association

REGISTER ON-LINE **NOW** [www.soilcare.org](http://www.soilcare.org)



## 'Grow the Growers' Field Day and Showcase Evening

Hosted by Organic Federation of Australia (OFA),  
Wollongbar TAFE Agriculture, TROPO &  
the National Association for Sustainable Agriculture Australia (NASAA)

### DAY PROGRAM

- 9:00 am Meet at Wollongbar TAFE G Block - look for hot house!
- 9:15am Introduction to the Intern Program - Greg Paynter
- 10:00am NASAA Certified Organic - 'Pathway to Organics' Peter Hastie
- 10:45am Field Visit to Organic mixed vegetable farm, local opportunity
- 12:30 pm Refreshments available.
- 1:30 pm - 3:00 pm Field Visit to Seedlings production greenhouse
- 3:30 - 5pm TAFE Compost Production Area and Organic Vegetables

### SHOWCASE EVENING

- 6:00pm Nightcap Restaurant
- Organic Dinner
- Leo McLean - Mara Seeds
- Networking and Organic Chat



### Presentation by Leo McLean of Mara Seeds

- ▶ Field Trip
- ▶ Meet the Growers
- ▶ Talk about Certification
- ▶ Hear about OFA's Organic Internship Program

When: 8th October  
 Where: Wollongbar TAFE  
 Sneaths Road, Wollongbar  
 Time: 9am Start 6pm Dinner  
 Cost: Day Ticket - \$30  
 (members - \$10)  
 Evening - \$30  
 Full Day Event -\$50

Enquiries to:- Carolyn Suggate [media@ofa.org.au](mailto:media@ofa.org.au) 0448778074  
 Booking can be made at ['Grow the Growers' Field Day and Showcase Evening](#)

## Local Landcare Coordinators Initiative

NSW Minister for Primary Industries, Lands and Water Niall Blair has announced details of the \$15 million NSW Local Landcare Coordinators Initiative which will unlock the full potential of Landcare volunteers across the state.

Brunswick Valley Landcare are submitting a joint application together with other Landcare Networks on the north coast through the North Coast Regional Landcare Network. We hope to be able to host this position in the New Year.

---

## Welcome to Jenny and Alys

BVL would like to welcome Jenny Hartigan and Alys Shilo to the BVL committee. Jenny was appointed as treasurer at the AGM and Alys as a committee member. Rita de Heer has taken on the role of vice chair. We hope that you enjoy your time with the BVL family and look forward to working with you.

---

## We value our natural environment, farms and communities

Byron Shire has responded positively to Council's Rural Land Strategy A Fresh Approach Discussion Paper and has submitted many ideas for Council to consider.

Byron Shire Council's manager environmental and economic planning, Sharyn French, said feedback showed that our natural environment, farms and diverse and welcoming communities are what attract local and visitors.

Priorities identified by the community in planning for future rural land included:

Enhancing the rural landscape, natural environment and our biodiversity;

Protecting farmland and enabling our farmers to adapt and refresh their businesses quickly to meet demand or changing circumstances;

Providing safe communities where people belong and work together for common sustainable outcomes.

Ms French said the feedback will help provide guidance for the next stage of the rural land use strategy.

"Residents' participation in the Discussion Paper has revealed an enthusiasm for being involved in building the foundations for the future of our rural area.

"Council is looking forward to continued community interest when the draft Rural Land Use Strategy is released for community comment in early 2016," she said.

A summary outlining how the community responded can be found on Council's website

<http://www.byron.nsw.gov.au/rural-land-use-strategy>.

---

## NCLLS: Seeking EOI for Regional Weed Committee

NCLLS is now seeking Expressions of Interest from landholders involved in North Coast rural industries for a new strategy focused Regional Weed Committee operating in the Tweed to Hastings area.

[Click here](#) for expression of interest package and details

# Landowner input needed for new hinterland vegetation mapping

Byron Shire Council is updating vegetation mapping for the hinterland areas of the Shire and is seeking landowner input to review the draft mapping for their property and provide feedback to Council.

The study area includes the majority of the Byron hinterland including Bangalow, Eureka, Federal, Clunes, Goonengerry, Montecollum, Wilson Creek, Mullum Creek, The Pocket, Main Arm, Upper Main Arm and Billinudgel.

Council's team leader natural environment, Angus Underwood, said the specialist consultants have reviewed the maps using 2014 aerial photographs, existing vegetation survey data and are currently undertaking on-ground inspections.

"The review is necessary to update the maps to reflect changes to vegetation cover and composition over time.

"The vegetation mapping provides baseline data which Council can use to identify high conservation value vegetation such as endangered ecological communities, koala habitat, old growth forest and wetlands, and to identify priority areas for conservation programs, land use planning and zoning," Mr Underwood said.

Landcare, community groups, consultants, government bodies and landholders can also use the mapping to inform planning and management of vegetation and habitats.

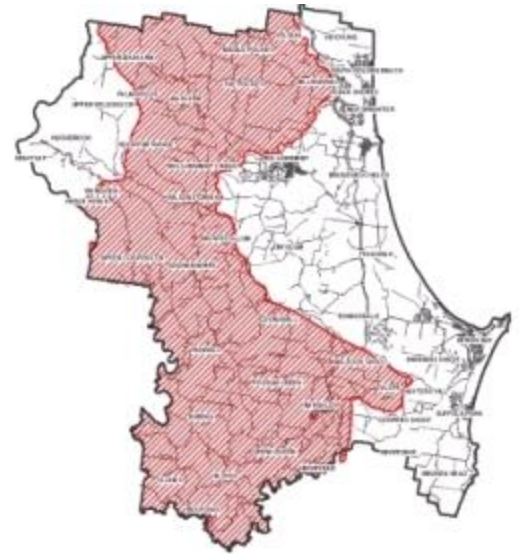
Landowners within the hinterland study area have been sent letters encouraging them to view the updated maps and provide feedback to Council.

"If you believe that what's on your land is different to the maps, we'd like to hear from you so we can correct the information. This will improve the maps so they can be used with a high level of confidence," Mr Underwood said.

The maps can be viewed at <http://www.byron.nsw.gov.au/public-exhibition> or ring Council's Natural Environment team on 6626 7324.

The draft vegetation mapping is on public exhibition until 15 October, 2015.

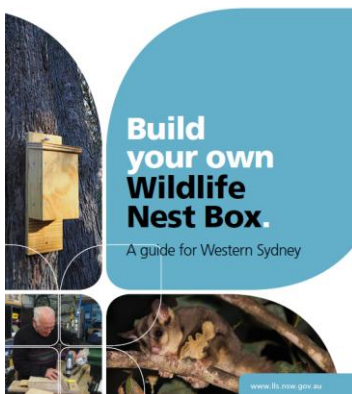
Following a review of landowner submissions, Council staff will review the vegetation mapping of properties and may request an opportunity to complete an onsite inspection at a time that suits the owner.



## New Booklet available

There is a new booklet available to download from the BVL website. The booklet although aimed at Western Sydney is a great guide for those wishing to build their own wildlife nest boxes. After the recent success of our own BVL nest box project success with a large percentage of the nest boxes already occupied it is increasing obvious that these are needed to help our local native fauna.

[http://brunswickvalleylandcare.org.au/wp-content/uploads/2014/06/LLS-Wildlife-Nest-Box-Final-Web\\_NLP-Logo.pdf](http://brunswickvalleylandcare.org.au/wp-content/uploads/2014/06/LLS-Wildlife-Nest-Box-Final-Web_NLP-Logo.pdf)



## Opportunity to deliver environmental, community and agricultural productivity outcomes

North Coast Local Land Services is seeking expressions of interest from qualified and experienced individuals, organisations and/or community groups to deliver a selected range of projects in 2015/2016. The three opportunities are designed to deliver the skills of local Indigenous people, protect threatened species and improve agricultural productivity.



Kel Langfield, Acting Team Leader, Northern said, "The diversity of these projects is an excellent demonstration of the range of outcomes delivered by North Coast Local Land Services.

"The North Coast region is unquestionably the most agriculturally and environmentally diverse in the state and we are presented with the challenge of delivering quality outcomes to a broad audience.

"Our organisation maximises our ability of meeting objectives by building strong partnerships with skilled organisations and groups," he said.

The first opportunity will support the engagement of Aboriginal communities in Natural Resource Management (NRM), sustainable agriculture, biosecurity and emergency management by supporting an Aboriginal Extension Project Officer to service the Tweed to Richmond Valley Local Government Areas. Supporting Aboriginal natural resource management enterprises and opportunities by developing the technical and management skills of local Indigenous people is identified as a high priority and key factor for overcoming Indigenous disadvantage in Australia.

The second opportunity will address weed management to limit feral pig shading habitat, specifically Lantana and Privet species, and protect threatened species and habitats that are adversely affected by feral pigs. The focus area for weed management and ecological restoration is the southern part of Tooloom Creek in the Upper Clarence area, from Tooloom Bridge to the junction with the Clarence River.

The objective of the third project is to improve soil health through soil testing and interpretation on a paddock basis and to integrate better soil management with improved farming practices through the delivery of training on soils and soil management strategies. Working with farmer groups, the project will benchmark key soil characteristics such as pH, CEC, nutrient levels and Organic Matter. The program will cover soil testing methods and interpretation.

Service providers who can demonstrate experience in natural resource management, weeds management, aboriginal engagement and soil management are invited to visit [www.northcoast.lls.nsw.gov.au](http://www.northcoast.lls.nsw.gov.au) for more information, guidelines and application forms. Expressions of Interest closes at 5.00 pm on Friday 23 October 2015. For more information contact the North Coast Local Land Services Lismore office during business hours on 6623 3900.

---

## Technology and Giving: a survey for Not-for-profits

The Federal Government has funded a major study into technology and platforms for giving and volunteering. The Not for Profit (NFP) sector is being urged to take part. The [Australian Centre for Philanthropy and Nonprofit Studies](#) at Queensland University of Technology will analyse "existing and emerging technology and platforms for giving and volunteering in Australia and overseas, exploring ways to harness technology and platforms to increase giving, how to enhance the uptake of these and identify the barriers to their adoption." The [Survey](#) will provide vital information about the current use of technology by Not-for-profit organisations in Australia.



## Are you a commercial seed collector? Do you collect from Rous Water operational land? If so, this information is for you.

Rous Water recognise the integrity of seed collected from the Rous Water Rainforest Reserve at Rocky Creek Dam and the role commercial Seed Collectors play in the local Bush Regeneration Industry – by providing local native seed with local genetic populations.

Rous Water aims to protect the public drinking water supply and therefore carefully regulates, manages and enables appropriate private recreation, community events and commercial activities on operational land.

Rous Water wishes to advise all commercial Seed Collectors currently using / or with the intention of using Rous Water operational land for collection, that they are required to make an application to Rous Water for a **Temporary Permit – For use of Rous Water Operational Land (commercial user)**.



The commercial activities Permit gives the commercial operator the legal right to carry out their proposed activity on Rous Water land and is a formal agreement where Rous Water has the opportunity to advise the operator of the responsibilities and obligations as it relates to the commercial activity.

For all the information relating to the policy, commercial operator guidelines and application process please visit the Rous Water website at [www.rouswater.nsw.gov.au](http://www.rouswater.nsw.gov.au) and search 'commercial'.

If you have any concerns or would like assistance with your application please contact the Technical Services Customer Services Group on (02) 6621 8055 or email [water@rouswater.nsw.gov.au](mailto:water@rouswater.nsw.gov.au).

---

## Statewide TSR Planning Framework

The first draft statewide planning framework for TSRs is open for consultation. LLS is keen to hear from the public with their opinions on how to manage TSRs in the future. LLS wants to understand the values people hold important for TSRs, including biodiversity and Aboriginal cultural heritage values. The consultation is open until 3 November 2015 and you can read the Framework [here](#).

---

## Seasonal Preparedness Update

Supplementing the Seasonal Conditions reporting that is regularly published by LLS and DPI, North Coast LLS has released a Seasonal Preparedness report that summarises the current season outlook and outlines some answers to the question "What is my plan if the next three months remain dry?" Read the [report here](#).

---

## TropAg15 - Advancing tropical agriculture

## TropAg2015

The inaugural TropAg2015 International Conference on Advances in Agriculture and Food for the Tropics will be held in Brisbane, 16-18 November. The conference will look at key challenges facing the agriculture and food industries. It will focus on research advances within the agriculture industries located in the subtropics and tropics. [www.tropagconference.com.au](http://www.tropagconference.com.au)

## Have your say on Proposed Marine Park Rezoning

Minister for Primary Industries Niall Blair and Minister for the Environment Mark Speakman announced on Tuesday, 1 September 2015 that community consultation will begin to determine final arrangements for the ocean beaches and headlands sites where an amnesty on recreational line fishing is currently in place.

Draft regulations have been prepared following the Government's decision last year to retain an amnesty allowing shore-based recreational line fishing at 10 sites while enforcing sanctuary zone rules at 20 sites.

Mr Blair said the draft regulations were informed by the independent scientific advice of the Marine Estate Expert Knowledge Panel. "The Panel determined that recreational shore-based line fishing can be a low-risk activity and it's great to see the draft regulations will allow recreational fishing in rezoned areas," Mr Blair said. "This Government remains committed to the ongoing protection of our State's unique marine resources and these draft regulations are in-line with our new approach to management of the marine estate in NSW."

Mr Speakman said that "The proposed changes will affect the Cape Byron, Solitary Islands, Port Stephens-Great Lakes and Batemans Marine Parks; all sanctuary zones in the Jervis Bay Marine Park will continue". "The proposed changes are for 10 sanctuary zone sites to be rezoned to habitat protection, which makes shore-based recreational line fishing lawful at these sites. However, in each marine park in which such fishing will be allowed at some sites, there are other multiple sites at which fishing is permanently prohibited." "This outcome strikes a balance between ensuring appropriate environmental protection and enabling low-impact recreational fishing."

Community members are encouraged to comment on the draft regulations before submissions close on 13 November 2015.

Copies of the draft regulations and a discussion paper are now available at [www.marine.nsw.gov.au](http://www.marine.nsw.gov.au).

Submissions can be made via an [online survey](#) or by email to: [contact.us@marine.nsw.gov.au](mailto:contact.us@marine.nsw.gov.au) or in writing to C/- Marine Environment, Locked Bay 1, Nelson Bay NSW 2315, marked "Ocean Beaches and Headlands – Draft Regulations".

---

## El Nino and La Nina

El Nino continues to strengthen and promises to be very strong, but its extent and strength depend on whether there is a concurrent positive Indian Ocean Dipole. Most models are predicting a positive dipole this year, which raises the prospect of a strong El Niño preceded by a positive Indian Ocean Dipole and followed by a La Niña event, exactly as occurred in 1982-84 and 1997-99. But sea surface temperatures to the north of Australia and across the Indian Ocean may moderate both climate systems.

The importance of natural resources for the future of agriculture and food security is gaining traction across the world. In Australia the Centre for Policy Development has released a discussion paper on opening up markets for agricultural goods and practices that maintain or increase primary resource condition.

For lots of great info subscribe to NRM on Farms. A monthly newsletter that summarises recent information about climate and natural resource management relevant to agriculture to keep farmers and agricultural and NRM advisors and researchers up to date. It is freely available to anyone interested or involved in agriculture or NRM. To subscribe, email Rebecca Lines-Kelly at [rebecca.lines-kelly@dpi.nsw.gov.au](mailto:rebecca.lines-kelly@dpi.nsw.gov.au)





# We need your help with the White Ibis & Cockatoo Survey

Sunday 11<sup>th</sup> October 2015

Anywhere in Australia



- The Community Survey of the White Ibis Population commenced in 2003.
- This survey aims to get a better understanding of the distribution and abundance of Ibis across NSW & since 2010 across Australia.
- Increasingly, Ibis are moving into urban environments bringing them into conflict with human's e.g. affecting aircraft safety, water quality and biodiversity.
- Please report the number of White Ibis you see: <http://www.environment.nsw.gov.au/surveys/WhiteIbisSurvey.htm>
- Reports within a week of the 11<sup>th</sup> are accepted.
- For more information visit the above website or contact us: <mailto:ibis.sightings@gmail.com>

- The Community Survey of the Sulphur-crested Cockatoo Population started in 2014.
- This survey aims to get a better understanding of the distribution and abundance of Cockies across NSW, particularly in urban areas.
- Cockatoos are moving into urban environments where they compete with other native species for limited large hollows in which to nest.
- Please report the number of Cockatoos you see: <http://www.environment.nsw.gov.au/surveys/CockatooPopulationSurvey.htm>
- Reports within a week of the 11<sup>th</sup> are accepted.
- For more information visit the website or contact us: <mailto:cockatoo.wingtag@gmail.com>





## It's Bird Week!

19<sup>th</sup> October – 25<sup>th</sup> October

Celebrate National Bird Week 2015 by taking part in the biggest citizen science project to hit Aussie shores! From 19-25 October, thousands of people from across the country are heading out into their backyards, local parks or favourite open spaces to take part in the first ever

Aussie Backyard Bird Count!

[www.birdlife.org.au/get-involved/whats-on/bird-week](http://www.birdlife.org.au/get-involved/whats-on/bird-week)



Photo by Deborah Pearse

You can register and download the APP from the above address and do your own “backyard” or join us on a bird walk or other activity each day. The walks will be at least 1 hour except for Wednesday 21st. Contact & registration [byronbirdbuddy@gmail.com](mailto:byronbirdbuddy@gmail.com)

**Monday 19th October at 8am** – Billinudgel Nature Reserve – Optus Track.  
Meet Shara Boulevard/Banool Circuit behind SDA church, Ocean Shores.

**Tuesday 20th October at 8am** – Marshalls Creek Nature Reserve  
Meet at corner of Kolora Way and Old New Brighton Road – Ocean Shores.

**Wednesday 21st October at 8am** - Tyagarah National Parks with National Parks rangers  
Meet at the surf club Brunswick Heads - registrations required - see flyer in events section.

**Thursday 22nd October at 8am** - Brunswick Nature Reserve – northside.  
Meet a-at the end of North Head Road New Brighton.

**Friday 23rd October at 8am** - Billinudgel NR – Yelgun track.  
Meet at Shara Boulevard behind SDA Church, Ocean Shores.

**Saturday 24th October at 8am** - Brunswick River walk  
Meet at the Brunswick Fish Co-op car park.

**Sunday 25<sup>th</sup> October at 3pm** – Afternoon at the Byron Wetlands  
PowerPoint presentation of Gondwana Rainforest Birds and guided walk around the wetlands. **Note:** following the release of this program we have been notified the wetlands will be closed for an upgrade from mid-Oct for at least for a month. Stay tuned for another venue or activity.



Photo by Jan Olley

What To Bring - Always wear covered shoes and bring water, hat, sunscreen and insect repellent. Except for presentation days always bring something to eat for morning or afternoon tea and lunch if it's over the lunch period.

Contact - for all BBB & BVBW Activities - Jan -02 66803279 or Mobile 0428864378  
[jeanetteolley@gmail.com](mailto:jeanetteolley@gmail.com) or [birdbuddygroup@yahoo.com.au](mailto:birdbuddygroup@yahoo.com.au)

## Weed of the Month

This month's weed of the month is Five-leaved Morning Glory or Coastal Morning Glory *Ipomoea cairica*.

It is a perennial climber with trailing and twining stems which roots at the nodes. Leaves are divided almost to the base with 5-7 lobes. The inflorescence contains one or sometimes 2 to 3 flowers. The flowers are funnel-shaped and hairless, violet to purplish violet with a darker throat, rarely white. It flowers and fruits throughout the year.

It threatens native vegetation by smothering it and eventually pulling mature trees to the ground. Being incredibly hardy it tolerates a wide variety of soil types and germinates readily by sending out long-running stolons and large amounts of seeds which are dispersed by water and birds.



It is widespread on coast, including swamps, but is now spreading into the hinterland.

For more information on how to control these weeds and other weeds in the shire please visit the Byron Shire Council website and you will find weed profile sheets: <http://www.byron.nsw.gov.au/weed-profiles>



## WORKING BEES - why not get out and get involved in one of our local groups?

For all Landcare Working Bees please wear protective clothing - long pants, long-sleeved shirt, closed-in shoes, hat, gloves and bring water, sunscreen, and insect repellent. **Please always contact the groups co-ordinators before attending a working bee as plans do change!**

### Brunswick Heads Dunecare

WHEN: 4<sup>th</sup> Sunday of the month 8:00am – 11:00am  
WHERE: Meet between the rock wall and the surf club  
CONTACT: Greg McDonald [brunswickheadsdunecare@gmail.com](mailto:brunswickheadsdunecare@gmail.com) 0414 457 346

### East Yallakool Landcare, Ocean Shores

WHEN: each Wednesday 9:00am – 12:00 am  
WHERE: East Yallakool Park, Ocean Shores  
CONTACT: David Kemp [dnkemp77@gmail.com](mailto:dnkemp77@gmail.com) 6680 4590

### Green and Clean Awareness Team, Byron Bay

WHEN: 3<sup>rd</sup> Sunday of the month 9:00am  
WHERE: Meet Main Beach, Byron Bay  
CONTACT: Veda Turner [vedaturner@gmail.com](mailto:vedaturner@gmail.com) 0427 857 991

### Heritage Park Landcare, Mullumbimby

WHEN: alternate Saturdays 9:00am – 11:00 am  
WHERE: Heritage Park, Mullumbimby  
CONTACT: Diana Hughes [bromspot@gmail.com](mailto:bromspot@gmail.com)

### Jinangong Landcare, Ocean Shores

WHEN: 1<sup>st</sup> Sunday of the month  
WHERE: The Tunnel Road, Ocean Shores  
CONTACT: Ian Parer [ianparer@hotmail.com](mailto:ianparer@hotmail.com)

### Lower Mullum Creek Landcare, Mullumbimby

WHEN: 2<sup>nd</sup> Sunday of the month  
WHERE: Azalea Street Bridge to Riverside Bridge, Mullumbimby  
CONTACT:

### South New Brighton Dunecare

WHEN: 1<sup>st</sup> Friday of the month 1:30pm - 4:30pm  
WHERE: Meet at southern end of the Esplanade at the Strand beach access point.  
CONTACT: Robyn Bolden [robyn.bolden@australis.net](mailto:robyn.bolden@australis.net) 6680 1970

### Suffolk Park Dunecare

WHEN: 1<sup>st</sup> Saturday of the month  
CONTACT: Helen Brown [hellyh@bigpond.com](mailto:hellyh@bigpond.com) 6685 4964

### Tyagarah Landcare

WHEN: Each Thursday 9:00am – 11:00am  
WHERE: 23 Prestons Lane, Tyagarah  
CONTACT: Bela Allen [bela\\_allen@yahoo.com](mailto:bela_allen@yahoo.com) 6684 7113

## LINKS

---

- Arakwal <http://arakwal.com.au/>
  - Border Rangers Alliance <http://www.greasternranges.org.au/border-ranges/overview/overview>
  - Bangalow River and Landcare <http://www.bangalowlandcare.org.au/>
  - Big Scrub Landcare <https://www.bigscrubrainforest.org.au/>
  - Brunswick Valley Landcare <http://www.brunswickvalleylandcare.org.au/>
  - Byron Bird Buddies <http://www.byronbirdbuddies.com.au/>
  - Byron Community College <http://www.byroncollege.org.au/>
  - Byron Shire Council <http://www.byron.nsw.gov.au/>
  - EnviTE [www.envite.org.au](http://www.envite.org.au)
  - Environmental Trust <http://www.environment.nsw.gov.au/grants/envtrust.htm>
  - Ewingsdale Locality Group (BVL) <http://ewingsdale.org.au/#/landcare/4532495308>
  - Far North Coast Weeds <http://fncw.nsw.gov.au/>
  - Friends of the Koala [www.friendsofthekoala.org](http://www.friendsofthekoala.org)
  - North Coast Local Land Services <http://northcoast.lls.nsw.gov.au/>
  - Northern Landcare Support Services <http://www.nlss.com.au/>
  - Mullumbimby Community Gardens <http://mullumcommunitygarden.wordpress.com/>
  - North Coast nature <http://www.northcoastnature.org.au/>
  - Richmond Landcare Inc. <http://www.richmondlandcare.org/>
  - Soilcare <http://www.soilcare.org>
  - Suffolk Park Locality Group (BVL) [www.landcare.nsw.gov.au/groups/suffolk-park-dunecare-group](http://www.landcare.nsw.gov.au/groups/suffolk-park-dunecare-group)
  - Tweed Landcare Inc. <http://www.tweedlandcare.org.au/>
  - Wilson's Creek Huonbrook Landcare <http://wilsonscreeklandcare.mullum.com.au/>
  - Wetlandcare Australia <http://www.wetlandcare.com.au/index.php>
- 

For information about Landcare or other natural resource issues in Byron shire  
please contact  
Landcare Community Support Officer  
Alison Ratcliffe 66267028 (Tuesday and Wednesday)  
email: [alison.ratcliffe@byron.nsw.gov.au](mailto:alison.ratcliffe@byron.nsw.gov.au)



---

This newsletter is funded by North Coast Local Land Services and supported by Byron Shire Council.

