



# Newsletter for Landcare and Dunecare in Byron Shire

<http://www.brunswickvalleylandcare.org.au/>



October 2018

## Forest Connections Field day by Alison Ratcliffe



On Friday 14<sup>th</sup> September Wilsons Creek Huonbrook Landcare on behalf of the Bush Connect Project “Regeneration and Linkage of Wilsons and Coopers Creeks” staged a well-attended bush regeneration field day at “Thieles Gate” in Huonbrook. The rainforests, the mixed eucalypt forests and the lantana and camphor laurel areas which make up the 68 ha of “Thieles Gate” are protected under a conservation agreement. Over the last 8 years funding from a number of different sources has enabled the conversion of the lantana and camphor areas to diverse native forests and

facilitated the conservation of endangered plant and animal species.

Stuart McDonald from Footprint Ecological Services led all the morning and afternoon visitors on an informative tour of some of the key regeneration sites. From Huonbrook Road Stuart pointed out the native forest regeneration possibilities for landowners after removal of camphor laurel. He then took visitors on an extended walk around a

valley that in 2013 was completely covered in lantana. After work in 2014 this is now an incredibly diverse forest (photos to left).



Among the presentations, demonstrations and discussions, Graham, joint property owner, talked about the history of the property including the work that has been undertaken to ensure the protection of threatened species on the property. Justin Mallee, OEH Threatened Species Officer, also explained why some plants and animals are threatened and what we can do to help.

To find out more about lantana and camphor conversion please visit <http://brunswickvalleylandcare.org.au/wp-content/uploads/2016/06/camphor-and-lantana-conversion-leaflet.pdf>

To find out more about some of the threatened species found in the Wilsons Creek please visit

<http://brunswickvalleylandcare.org.au/wp-content/uploads/2016/06/Threatened-Species-leaflet-final.pdf>

*This project is assisted by the New South Wales Government through its Environmental Trust.*



Program now available



GUIDED BIRD, PLANT USE & RAINFOREST RESTORATION WALKS | PRACTICAL WORKSHOPS & TALKS FACILITATED BY SOME OF AUSTRALIA'S LEADING ECOLOGISTS, BUSH REGENERATORS, NATURALISTS & SCIENTISTS | FABULOUS FOOD & ENTERTAINMENT | INFORMATION, DISPLAYS & STALLS | FUN ENVIRONMENTAL ACTIVITIES FOR THE WHOLE FAMILY



## CELEBRATING 25 YEARS OF BIG SCRUB LANDCARE & THE 20TH ANNUAL BIG SCRUB RAINFOREST DAY

Protecting our rainforest and its magnificent biodiversity

BYO PICNIC | FOOD & BEVERAGES AVAILABLE FOR PURCHASE | GOLD COIN DONATION AT ENTRY

Full program available at [www.bigscrubrainforest.org](http://www.bigscrubrainforest.org) or [www.rous.nsw.gov.au](http://www.rous.nsw.gov.au)

PRINCIPAL SPONSOR



8.27 x 11.59 in

MAJOR SPONSORS



COMMUNITY TREE PLANTING SPONSOR



FRIEND OF THE EVENT SPONSORS





# Free Field Day



## Land for Wildlife - Creek Restoration



Foundation for  
National Parks  
& Wildlife

- Do you have creek bank erosion problems?
- Are you thinking of replanting your creek banks?

Join us to explore the causes of creek bank erosion and the solutions.

You will also learn how to improve water quality and encourage a diversity of wildlife.

Visit The Farm at Byron Bay's restoration of Simpsons Creek.

**Friday 26th October 2018 12.30 pm – 4.00 pm Ewingsdale**

### PROGRAM AND GUEST SPEAKERS:

- 12.30 Welcome, introductions and a cuppa.
- 1.00 Presentation from Tony Broderick, Northern Rivers Catchment Management on riparian restoration
- 2.00 Restoration projects at The Farm and a guided walk through the creek restoration - Alison Ratcliffe, Brunswick Valley Landcare and Jodie Smith, The Farm
- 3.30 Afternoon tea and discussion

**BOOKINGS are essential** as numbers are limited. Please contact Alison: [alison.ratcliffe@byron.nsw.gov.au](mailto:alison.ratcliffe@byron.nsw.gov.au) or 02 6626 7028 to book. Directions and further details will be given on booking.

*This field day is possible through funding from the Foundation for National Parks and Wildlife*

*and support from The Farm Byron Bay*



BEFORE—March 2016



AFTER—June 2018



## Dates for your diary

- 11<sup>th</sup> October **Mullumbimby Vintage Hydro Pre-feasibility Community Launch** 5.30 pm drill hall theatre for more info [mullumhydro@gmail.com](mailto:mullumhydro@gmail.com)
- 13<sup>th</sup> October **Renewable Energy Showcase**  
<https://www.eventbrite.com.au/e/renewable-energy-showcase-tickets-50382367016>
- 23<sup>rd</sup> October **Community Energy Opportunities in the Norther Rivers** panel discussion  
<https://www.eventbrite.com.au/e/community-energy-opportunities-in-the-northern-rivers-mullumbimby-panel-discussion-tickets-50894654281>

## Compost Benefit for Soils on the Mid-North Coast



**Friday 12th October, 2018** at the Coffs Harbour National Marine Science Centre.

The forum brings together key players, and spot-lights best practice in both the production and application of compost on the Mid-North Coast region of NSW. For the program details go to: <https://www.aora.org.au/event/aora-nsw-regional-members-meeting/>

AORA are keen to attract primary producers to this event and have a limited number of pre-paid tickets available to primary producers through sponsorship by the NSW EPA/NSW DPI, to register interest in one of these tickets please register by contacting Uma Preston of AORA via the following email: [sasecretary@aora.org.au](mailto:sasecretary@aora.org.au). **Registration fees (ex GST) AORA Members:** Growers: \$25 per person; \$50 per person; **Non-Members:** \$75 per person. To book: <https://www.aora.org.au/product-category/event-tickets/>. **Uma** would be happy to answer any questions, please call on **0452 537 266**.

JOIN US FOR A PLANTING  
**CELEBRATING  
20 YEARS**  
OF RICHMOND LANDCARE

All members of the Richmond Landcare network are invited to a celebratory planting at the site of our newest group, Bagot Park Landcare. Breakfast and coffee provided +  
**SPECIAL MEMBER GRANTS ANNOUNCEMENT**

Wear covered shoes, sun protection and  
BYO reusable water bottle

When: Sunday November 4 2018  
Time: 9am start, announcements 11am  
Location: Bagot Park, Bagot St, Ballina

Check [fb.com/RichmondLandcare/](https://fb.com/RichmondLandcare/) for more details

Celebrating 20 Years  
The logo for Richmond Landcare Inc. features a stylized white graphic of two hands holding a plant, with the text 'Richmond Landcare Inc.' below it.



[http://brunswickvalleylandcare.org.au/wp-content/uploads/2016/06/In-the-Valley-18\\_2-1.pdf](http://brunswickvalleylandcare.org.au/wp-content/uploads/2016/06/In-the-Valley-18_2-1.pdf)

## Free tree guards and bamboo stakes

Does anyone need and plastic plant guards and bamboo stakes? Located in Ocean Shores and a few hundred available. If you're interested please contact Alison for where to pick them up from 6626 7028.



## Repower Byron

Because you care, you've switched from single use plastic to canvas bags, from disposable coffee cups to BYO cup – and even to organic produce. Now, why not switch from fossil fuels to renewables?



For Byron Shire to reach its renewable energy and climate action goals we need to Repower! It is simple and does not need to cost you extra money - to inspire the Shire to Repower, Santos Organics is giving away 2 x \$1000 prizes in the coming weeks.

<http://www.repowerbyron.org/>

## NSW Sustaining Landcare Week Debate

As part of NSW Sustaining Landcare week to ensure continued funding for Landcare support staff, 11 MPs spoke on the significant value Landcare provides and commended the hard work and dedication of Landcarers across the state during a debate held in Parliament on Thursday 20 September. Click here to read the Hansard transcript.

<https://www.parliament.nsw.gov.au/Hansard/Pages/HansardResult.aspx#/docid/HANSARD-1323879322-103597>

## Australia's faunal extinction crisis

### Submission by EDOs of Australia

Almost 2000 species and ecological communities are listed as critically endangered, endangered or vulnerable to extinction in Australia. A strong legal framework to protect biodiversity and build resilience is essential for reversing the trajectory towards extinction facing many of our unique species.



EDOs are all about protecting the environment through law and our contribution to this inquiry focuses on legal solutions to the extinction crisis.

We recommend a new Environment Act for Australia is needed to address the contemporary, interlinked challenges of extinction and biodiversity protection, natural resource management, land use, human settlements, production and consumption systems and climate change. The Environment Act must be underpinned by renewed national leadership, independent and trusted institutions, high levels of environmental protection, with strong community engagement and access to justice.

This submission first notes the 13 broad recommendations for biodiversity reform, and then identifies specific recommendations related to the terms of reference. *A superb parrot. Photo: Ron Knight, Wikimedia, Creative Commons*

[https://www.edonsw.org.au/australias\\_faunal\\_extinction\\_crisis?utm\\_source=eBulletin+list+June+2018&utm\\_campaign=403ec52dcf-eBulletin21Sept2018&utm\\_medium=email&utm\\_term=0\\_0aa74baca5-403ec52dcf-107461](https://www.edonsw.org.au/australias_faunal_extinction_crisis?utm_source=eBulletin+list+June+2018&utm_campaign=403ec52dcf-eBulletin21Sept2018&utm_medium=email&utm_term=0_0aa74baca5-403ec52dcf-107461)

## STORIES to inspire and give you hope

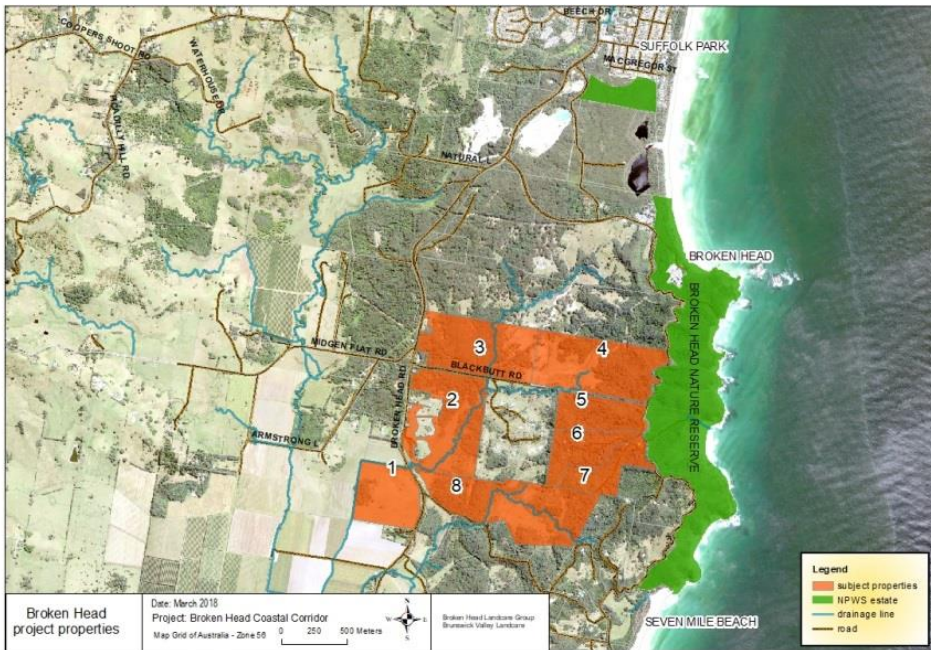
### Successful Funding for Broken Head Properties by Alison Ratcliffe

Brunswick Valley Landcare and Broken Head Locality group have been successful in receiving funding from the Environmental Trusts Restoration and Rehabilitation project. The Broken Head Coastal Corridor project extends on Stage 1 to include eight private properties over a 42 ha project site. The project aims to continue to extend and improve the condition and connectivity of a critical corridor link in coastal Byron Shire, connecting high biodiversity areas of Broken Head, threatened flora and fauna habitat, endangered floodplain and rainforest ecological communities, freshwater wetlands and waterways. Eight adjoining landholders would participate in 40 ha of restoration works (weed control) and 2 ha of

creek line restoration including linking an isolated remnant patch of rainforest with other remnant vegetation.

The project expands and supplements previous funding for 59 ha, successfully completed in 2017 and inspiring other landholders in the area who are included in the new project.

*This project is assisted by the New South Wales Government through its Environmental Trust.*



### Homemade nest box success by Rita de Heer

The nest box I got for Christmas has a clutch of 6 chicks in it – we think they are Rosella's. It's in a tree on the street verge in Mullumbimby, the box isn't even very high! View the video here

<https://www.facebook.com/rita.deheer/videos/1842752105842395/>



### Blueberry Farmers working to reduce runoff by North Coast Local Land Services

With the help of local growers North Coast Local Land Services has been working to trial the effectiveness of wood chip bioreactors to reduce nitrate runoff on Blueberry Farms and early results look very promising.

Bioreactors were constructed in both Bucca Creek and Sandy Beach earlier this year to test their effectiveness in the two most prolific growing areas in the region. To read more please visit

<https://www.singletonargus.com.au/story/5646253/trial-to-reduce-nitrate-run-off-on-blueberry-farms/>

Blueberry and protected cropping growers interested in bioreactors can make enquiries with Shaun Morris, Senior Land Services Officer at Coffs Harbour by phone 6659 9402 or email via [shaun.s.morris@lls.nsw.gov.au](mailto:shaun.s.morris@lls.nsw.gov.au)



## Land for Wildlife

**Aussie Bird Count – only 11 days to go** by Birdlife Australia



The #AussieBirdCount is a great way to connect with the birds in your backyard no matter where your backyard happens to be — a suburban backyard, a local park, a patch of forest, down by the beach, or the main street of town.

You can count as many times as you like over the week, we just ask that each count is completed over a 20-minute period. The data collected assists BirdLife Australia in understanding more about the birds that live where people live.

For more information on how to take part, head to the [Frequently Asked Questions page](#).

To register visit <https://aussiebirdcount.org.au/>

## Attracting wildlife to your garden

 by Backyard Buddies

Wildlife are the animals that live freely in the natural environment.

And they need a place to live. For people, such a place is called "home." For wildlife, the place is called "habitat." But wildlife habitat is not just trees, shrubs, grass, or crops. It is a complex mixture of plant communities, water, weather, animals, and other environmental features that provide the cover and food that wildlife need.

Find out more about what you can do to help our native wildlife by following the link below to learn how to :

- Build a bee hotel
- Build a butterfly box
- Build a frog pond
- Build a ladybird house
- Build a microbat roost box
- Create a lizard friendly garden
- Habitat for big birds
- Habitat for small birds

<https://www.backyardbuddies.org.au/create-habitats/home-diy-projects>



## FUNDING

### Do you have a great project and need funds to make it happen?

You can find more information on available grants on the Brunswick Valley Landcare website including a calendar of all grants expected to be available during 2018. There are also some handy tips on how to be successful with grant applications. Below is a summary of grants which are currently accepting applications and ones that are anticipated to open within the next month.

<http://brunswickvalleylandcare.org.au/funding/>

### Restoration and Rehabilitation grants

The NSW Environmental Trust is now inviting applications to the 2019 round of its Restoration and Rehabilitation Grants Program.



A total of \$4 million is available to the following organisations for projects that assist in the ongoing sustainable management and stewardship of significant environmental assets and services in NSW:

- \$2 million for projects by community organisations
- \$2 million for projects by government entities

Grants of between \$5,000 and \$100,000 are available. Applications close **3pm Monday 3<sup>rd</sup> December 2018**. Guidelines, application forms and a range of resources are available on the [Trust's website](#).

### Wettenhall Environment Trust

Do you have a project that needs funding around flora and fauna conservation, threatened mammal conservation, and landscape restoration and education?



**Wettenhall**  
ENVIRONMENT TRUST

We are looking for projects around:

- **flora and fauna conservation** (Australia-wide)
- **threatened mammal conservation** (Australia-wide)

**Note:** There are only opening dates, no closing dates. The round closes when a suitable number of applications and spread of applications have been received. <http://nwf.org.au/grants/small-environmental-grants/>

### Science and Innovation Awards for Young People

Grant applications are open for the 2019 Science and Innovation Awards for Young People in Agriculture, Fisheries and Forestry. If you're 18-35, this is your chance to apply for a grant of up to \$22,000 to fund your project on an innovative or emerging scientific issue that will benefit Australia's primary industries. Applications close 12<sup>th</sup> October

<http://www.agriculture.gov.au/abares/conferences-events/scienceawards>



**Australian Government**  
Department of Agriculture  
and Water Resources

### Community Initiatives Program (Section 356)

Council's Community Initiatives Program aims to improve community well being and quality of life for Byron Shire residents. Council invites applications for community driven initiatives that address a specific need, build a sense of community and align with Council's goals.



The guidelines, assessment criteria and an application form can be downloaded from Council's website at [www.byron.nsw.gov.au/Community/Supporting-communities/Funding-opportunities](http://www.byron.nsw.gov.au/Community/Supporting-communities/Funding-opportunities)



## Agrifutures Rural Women's Award

Applications are now open for the AgriFutures™ Rural Women's Award.

Each state and territory winner receives a \$10,000 bursary for innovative

ideas and projects, access to professional development opportunities and alumni networks. Applications close 31 October 2018. <https://www.agrifutures.com.au/people-leadership/rural-womens-award/>



## Weed of the Month

This month's weed of the month is Cocos Palm, Queen Palm *Syagrus romanzoffiana* (*Syagrus romanzoffianum*, *Arecastrum romanzoffianum*).

A large palm tree originally from Brazil growing to 20 metres tall with a single, smooth grey, straight trunk and slightly plumose (feathery) leaves.

Its massive leaves can reach up to 5 m in length on mature trees. These leaves consist of a thick main stalk and numerous (300-500) very long leaflets (up to 1 m long and 3 cm wide). Its large branched flower clusters (up to 2 m long) contain numerous small yellowish or cream-coloured flowers.

Its egg-shaped fruit (2.5-3 cm long) from green to yellow and then orange when fully mature. They hang in large cluster and appear in spring. The fruit and seeds are eaten by birds or bats or carried by water and dispersed throughout the landscape. They are also commonly dumped in garden rubbish.

Cocos Palms are widely planted as garden plants and are spreading into many vegetation types. They have the ability to prolifically reproduce creating thick carpets of seedlings that outcompete recruiting native species.

Every year many flying-foxes are injured or killed by Cocos palms. Injury or death can occur in a number of ways:

- When eaten green by flying-foxes, Cocos palm fruits can be toxic.
- Sticky palm fruits can cause severe constipation. This causes dehydration and death in younger flying-foxes.
- Flying-fox toes can get caught in palm flower sheaths, causing injuries as animals attempt to escape.
- Flying-foxes can get caught in the strappy frond leaves, causing distress or death and can damage their wing membranes on the tough flower spikes.
- Young flying-foxes can get seeds caught behind their canine teeth, leading to a slow death by starvation.
- Flying-foxes may come down to ground level to eat dropped seeds, increasing their vulnerability to attack from dogs and cats.
- If the palms are planted near barbed wire or netting, flying-foxes can be entangled and trapped.

When seedlings they can look similar to the Cabbage Tree Palm *Livistona australis*, but Cabbage Tree Palms have more of a petiole and quickly shows leaf divisions and spines.



## WORKING BEES - why not get out and get involved in one of our local groups?

For all Landcare Working Bees please wear protective clothing - long pants, long-sleeved shirt, closed-in shoes, hat, gloves and bring water, sunscreen, and insect repellent. **Please always contact the groups co-ordinators before attending a working bee as plans do change!**

### Yallakool Reserve Landcare, Ocean Shores

WHEN: each Wednesday and Friday at 8.30 – 11.00 am  
WHERE: corner of Yallakool Drive and Warrambool Road, Ocean Shores  
CONTACT: David Kemp [dnkemp77@gmail.com](mailto:dnkemp77@gmail.com) 0427 650 861

### Green and Clean Awareness Team, Byron Bay

WHEN: 3<sup>rd</sup> Sunday of the month 9:00am  
WHERE: Meet Main Beach, Byron Bay  
CONTACT: Veda Turner [vedaturner@gmail.com](mailto:vedaturner@gmail.com) 0427 857 991

### Heritage Park Landcare, Mullumbimby

WHEN: alternate Saturdays 9:00am – 11:00 am  
WHERE: Heritage Park, Mullumbimby  
CONTACT: Diana Hughes [bromspot@gmail.com](mailto:bromspot@gmail.com)

### Jinangong Landcare, Ocean Shores

WHEN: 1<sup>st</sup> Sunday of the month  
WHERE: The Tunnel Road, Ocean Shores  
CONTACT: Ian Parer [ianparer@hotmail.com](mailto:ianparer@hotmail.com)

### Mullum Town Landcare, Mullumbimby

WHEN: last Sunday of the month  
WHERE: find out from Rita de Heer  
CONTACT: Rita de Heer 02 6684 1495 [rdeheer1@bigpond.com](mailto:rdeheer1@bigpond.com)

### South New Brighton Dunecare

WHEN: 1<sup>st</sup> Friday of the month 1:30pm - 4:30pm  
WHERE: Meet at southern end of the Esplanade at the Strand beach access point.  
CONTACT: Robyn Bolden [robyn.bolden@australis.net](mailto:robyn.bolden@australis.net) 6680 1970

### Suffolk Park Dunecare

WHEN: 1<sup>st</sup> Saturday of the month  
CONTACT: Helen Brown [hellyh@bigpond.com](mailto:hellyh@bigpond.com) 6685 4964

### Tyagarah Landcare

WHEN: Each Thursday 9:00am – 11:00am  
WHERE: 23 Prestons Lane, Tyagarah  
CONTACT: Bela Allen [bela\\_allen@yahoo.com](mailto:bela_allen@yahoo.com) 6684 7113

**Can't find a group near you?** We have many other groups who meet on an ad hoc basis (contact us for more details) or if there isn't an existing group in your neighbourhood or you are interested in looking after a particular area, BVL can help you to form a locality group under the BVL umbrella.

## LINKS

---

- Arakwal <http://arakwal.com.au/>
  - Border Rangers Alliance <http://www.greasternranges.org.au/border-ranges/overview/overview>
  - Bangalow River and Landcare <http://www.bangalowlandcare.org.au/>
  - Big Scrub Landcare <https://www.bigscrubrainforest.org.au/>
  - Brunswick Valley Landcare <http://www.brunswickvalleylandcare.org.au/>
  - Byron Bird Buddies <http://www.byronbirdbuddies.com.au/>
  - Byron Community College <http://www.byroncollege.org.au/>
  - Byron Shire Council <http://www.byron.nsw.gov.au/>
  - EnviTE [www.envite.org.au](http://www.envite.org.au)
  - Environmental Trust <http://www.environment.nsw.gov.au/grants/envtrust.htm>
  - Friends of the Koala [www.friendsofthekoala.org](http://www.friendsofthekoala.org)
  - Local Land Services [www.northcoast.ils.nsw.gov.au](http://www.northcoast.ils.nsw.gov.au)
  - North Coast Local Land Services <http://northcoast.ils.nsw.gov.au/>
  - Border Ranges Richmond Valley Landcare [www.brrvl.nsw.gov.au](http://www.brrvl.nsw.gov.au)
  - Mullumbimby Community Gardens <http://mullumcommunitygarden.wordpress.com/>
  - North Coast Nature <http://www.northcoastnature.org.au/>
  - Richmond Landcare Inc. <http://www.richmondlandcare.org/>
  - Rous County Council (formerly Far North Coast Weeds) <http://rous.nsw.gov.au/>
  - Soilcare <http://www.soilcare.org>
  - Tweed Landcare Inc. <http://www.tweedlandcare.org.au/>
  - Wilson's Creek Huonbrook Landcare <http://www.wilsonscreeklandcare.mullum.com.au/>
- 

For information about Landcare or other natural resource issues in Byron shire please contact

Landcare Support Officer

Alison Ratcliffe 6626 7028 0421 244 640 (Monday, Thursday and Friday)

email: [alison.ratcliffe@byron.nsw.gov.au](mailto:alison.ratcliffe@byron.nsw.gov.au)



This newsletter is supported by Byron Shire Council.

