



Newsletter

Conserving and restoring from forest to foreshore

Well here's a happy bunch of Landcarers to welcome you to our August newsletter!



Ten years of Broken Head Coastal Corridor restoration

A wonderful sunny winter morning saw 24 people turn out to plant 300 trees at Araucaria in Broken Head. All the plants were in the ground, watered, mulched, and guarded in 2 hours. We then sat down to the most outstanding morning tea. It was so good I had to try 3 pieces of cake!

The Broken Head Locality group has a current Environmental Trust Restoration and Rehabilitation grant that includes seven properties between Piccadilly Hill and Broken Head mainly focusing on restoring and replanting riparian vegetation along Midgen Creek. This is the 2nd year of a 4-year project and is Stage 3 in the long-term Broken Head coastal Corridor project which started in August 2014, ten years ago.

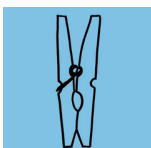
Proudly funded by



This project has been assisted by the New South Wales Government through its Environmental Trust.

.....

BRUNSWICK VALLEY LANDCARE IS A REGISTERED CHARITY ON PEGS AND PUBLINC



Local Pegs app allows businesses to offer discounted prices to locals. You can opt to keep the discount, tip the business, or donate to a local charity



As a Publinc member, not only do you get discounts on food and drinks at Hotel Brunswick, but you can donate your points to a local charity



This initiative is made possible by the NSW Landcare Program. A collaboration of Local Land Services and Landcare NSW supported by the NSW Government.

BVL NEWS

Let's show our mangroves some love

It was World Mangrove Day on July 26 so we thought it time to shine the spotlight on these often overlooked plant species.

Why are mangroves important?

- they provide feeding and breeding habitat for fish, birds and crustaceans
- they act as filters for nutrients and sediments, reduce erosion and maintain water quality
 - they provide protection from storms and cyclones
 - they act as a carbon sink.

We have four species of mangrove that occur in the Brunswick River.

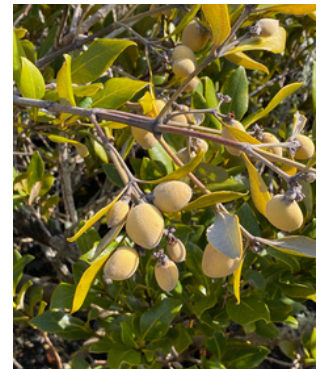
1. River Mangrove *Aegiceras corniculatum*

Low growing shrub 2-4m, with glossy round leathery alternate leaves. Flowers white and fragrant. Fruit are curved cylindrical horns.



2. Grey Mangrove *Avicennia marina* subsp. *australasica*

Small tree to 9m. Bark smooth and flaky. Branches greyish or silvery with small matted hairs. Leaves opposite, leathery with lower surface greyish or silvery hairy. Flowers golden and tubular. Fruit yellow when ripe, seed germinating before the seed case falls. Often seen washed up green on the beach.



3. Black Mangrove *Bruguiera gymnorhiza*

Tree to 35m, though usually smaller. Bark reddish-brown. Leaves opposite, long-stalked, thinly fleshy and leathery. Develops short prop-roots. Flowers white and solitary. The fruit are turbinate (spinning-top shaped) and when mature, they drop and become embedded in the mud in an upright position, where they rapidly develop roots.



4. Milky Mangrove *Excoecaria agallocha*

Shrub or small tree to 5-9 m high. Bark grey and rough. Leaves alternate and bright green. Flowers yellow-brown and occur in sprays. Fruit a capsule often dehiscing explosively. Most of the common names refer to its toxic properties or its propensity to cause blindness when its latex comes into contact with the eyes.



https://www.dpi.nsw.gov.au/_data/assets/pdf_file/0020/236234/mangroves.pdf

.....

Land for Wildlife News



As you can tell from the picture, BVL were wrapped to attend the recent Land For Wildlife Regional Providers Forum in Lismore, hosted by Community Environment Network (CEN), who administer the NSW program. It was a fantastic opportunity to come together to hear case studies, provide local-level updates, share knowledge and discuss solutions to challenges within a regional context. We left feeling super energised!

There are currently 2958 registered Land for Wildlife properties in NSW and that number keeps rising. Hearing about the fantastic habitat restoration work that's going on out there on private land really fired us up. And our jaws hit the table listening to a presentation by Land For Wildlife SE Qld network. They are 100% funded by local Councils, have 50 LfW Council Officers, a permanent Project Manager, over 5,600 registered properties and a 10-year Strategic Plan. Impressive.

Northern Rivers LfW Providers are stretched relatively thin in capacity to respond to demand for the program, thorough Site Assessments are the critical first step in the registrations process and these take time to be done well. What shone through from the Forum was a theme of connection and collaboration - how can we help build landholder capacity at a regional level by collaborating to offer educational workshop opportunities around common areas of interest, or issues faced. So watch this space.....ideas are brewing. And if you've registered a Land for Wildlife EOI with BVL and are waiting on a site visit, thank you for your patience, next round of Assessments are being scheduled over coming weeks.

<https://brunswickvalleylandcare.org.au/land-for-wildlife/>



Land for Wildlife News

A big hi and welcome to our newest Land for Wildlife members!



The Dressler family at Nashua



Ian & Niki at Palmwoods



Bec at Myocum with Dave Rawlins

Biodiversity values are going to be boosted at four more properties in Byron Shire with these registrations recently confirmed by CEN.....congratulations and thank you all in one!

It was a delight conducting Habitat Assessments with these caring landholders, each interested in how they can support our native wildlife, from the smallest of insects to the larger mammals and birds.

How an Assessment works is BVL arranges a convenient time to visit your property with you. We discuss your interests and future plans for management of the property. We assess and quantify the areas of native vegetation, identify the plant species, plant community types and nearest remnant vegetation, as well as any weed species that may be impacting the health of native vegetation.

There's often a cuppa involved, which is a great opportunity to answer people's questions and learn more about what they love about living where they do.



John & Christine with Dave Rawlins on our Habitat Assessment at top of Mullum Creek



Stay tuned for next month's new segment....

CRITTER CORNER

BYRON SHIRE COUNCIL NEWS

Pest Animal Management Plan (PAMP) Review



Have your say

Council is reviewing the Byron Shire Pest Animal Management Plan and would like community input into the plan.

A 10-minute survey has been prepared to collect local insights, such as:

- Knowledge and attitudes towards pest species
- How you are currently managing pests on your property
- How you would like to be involved in Council pest management programs.

The review will be exploring the most recent scientific findings and best practice in pest animal management.

Byron Shire Council's Pest Animal Management Plan includes:

- Information about how we manage pest animals on Council land.
- Information about how we can help with pest animal management on private land.
- Outcomes, objectives and actions to address and manage the impacts of pest animals.

More information:

<https://www.byron.nsw.gov.au/Council/Report-Requests-Feedback/Your-Say/Pest-Animal-Management-Plan>

BVL PROJECTS UPDATE

Junior Landcare workshops launch!



Friday 9 August was the first Junior Landcare workshop with the students of Rous Public School. The program has been developed by Dr Ray Moynihan, with funding support from the Foundation for Regional & Rural Renewal (FRRR) and BVL.

The concept is to connect local schools with their local Landcare network or locality group - for Rous, that's Richmond Landcare Incorporated and RLI Coordinator Emily Headlam represented on the day. Emily was a total hit with the kids, as was Presenter Deb Jorgensen (pictured left with Ray Moynihan).



We were also privileged to have Aunty Monica from Ngulingah Local Aboriginal Land Council and Gordon Brown from Ngulingah Rangers on hand to help students with their planting skills, including planting a bush tucker garden. Gordon provided the 160 plants, all propagated from seed endemic to the area and the Ranger team beautifully prepared the planting site for us.

Rous PS teachers & students provided wonderful feedback from their day with us, saying it was lots of fun. The Junior Landcare workshops continue over the next months at six other schools.

"Junior Landcare in the Northern Rivers: rejuvenation, regeneration, restoration" is a project made possible through funding from FRRR



Regenerative Agriculture

**The Most Important Livestock in Our Fields: Enlisting soil microbes to help prevent plant disease.
Excerpt from original article published in Acres USA by Gary Reding**



“When I was in high school trying to determine what I wanted to study in college, my dad, who was an engineer with very logical and linear thinking, told me, “Begin with the end in mind.” He coached me to think about where I wanted to live, what I wanted to do once retired, how much it would cost, and what I would have to do to make a living and save for retirement. Did I want to get married and have kids? What kind of house? How many kids? Did I want to enjoy my work more or focus more on making money? We talked about these and many other aspects of living life in this world.

He said, “Think about all the steps it takes to make that happen at the end of your career, and work your way back, step by step, all the way back to today, and that will help you decide what you want to study in college.”

As logical and linear as that sounded, the reality turned out to be much more complex. With every variable I tested, it brought in a new influence, which brought in another impact that either made the decision better or worse. That way of thinking, though, helped lead me to what I do now — working with plants and animals on farms. When asked what I do for a living, my response is, “I help farmers improve world health, one farm at a time.” This is simple, but complex.

If your retirement goal is to improve world health, what steps need to be taken to achieve that? A healthy world means clean air and water — two of the major ingredients for all life. We can have healthy people only if we have good food and a clean environment; this means we need to have healthy plants and animals to eat. If the plants and animals are to be healthy, then we need to have living soil for the plants to grow in so the animals and people that eat the plants can thrive.

The complexity of good management involves building healthy plants and soil to feed healthy animals and people while doing it in a way that improves the small water cycle, reduces soil erosion and nutrient runoff, keeps our water clean and maintains a functioning carbon cycle, which in turn helps keep our air clean. If you think about all the steps you need to take to build healthy humans, it all begins with living soil. Everything is connected to everything.”

Full article here: <https://members.acresusa.com/the-most-important-livestock-in-our-fields/>



Regenerative Agriculture

News from the Tweed - Getting it dung: New dung beetle species showing promising results



Image: Council's Program Leader Sustainable Agriculture Eli Szandala supporting local grazier Lindsay Brown with the release of *Onitis caffer* on Lindsay's farm.

A newly introduced dung beetle species, aimed at addressing a critical gap in Tweed's grazing lands, is showing promising results one year after its release.

In May 2023, Council's Sustainable Agriculture Program released the new species *Onitis caffer*, to six cattle grazing properties in the Tweed. This winter-active beetle aims to fill a critical gap in the Tweed's grazing land, where the existing beetle population becomes dormant during winter. This dormancy leads to an overabundance of dung which hampers pasture production and can cause environmental and animal health problems.

A recent survey conducted by Council's Sustainable Agriculture team, indicated that 50% of the sites have signs of successful survival and reproduction. Council's Acting Program Leader Sustainable Agriculture Aiden Sloman said the initial results are promising.

"A healthy dung beetle population improves soil health and pasture production, reduces waterway pollution by burying and dispersing dung, and lowers the population of harmful parasites like buffalo fly and ringworm."

"While more time and additional surveys are needed to accurately determine population growth and dispersal, these early results are promising and give us hope for the future integration of this species."

To read full details of this exciting development visit: [Tweed Media Releases](#)

Find out more about Council's sustainable agriculture initiatives at tweed.nsw.gov.au/agriculture-farming or contact Council's Program Leader Sustainable Agriculture on (02) 6670 2400.

This project was delivered by Tweed Shire Council with funding support from the Australian Government's Future Drought Fund.



Plant profile

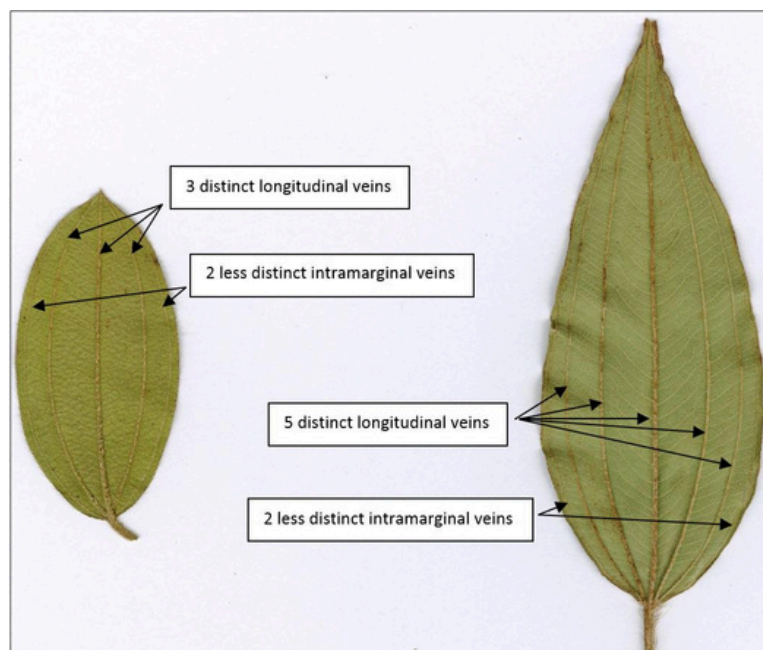
Know your Melastome?

This one caused some confusion whilst researching - Native Blue Tongue vs exotic Asian Melastome, not helped by different usage of the native species scientific name in QLD & NSW.

Here's some helpful clarification from the wonderful folk at SEQLD Land for Wildlife.
Article by Amanda Maggs Land for Wildlife Officer Brisbane City Council and images by Deborah Metters.

In recent years, the introduction of the exotic Asian Melastome (*Melastoma candidum*) has been a source of concern as it is similar in appearance and often confused with the native Blue Tongue (*Melastoma malabathricum* subsp. *malabathricum*). The purple fruit of native Blue Tongue is sweet and edible, and once eaten, it turns tongues a blue-purple colour, hence the common name.

Asian Melastome, native to tropical Asia, is cultivated as an ornamental shrub. Readily spread by birds, it has become an invasive garden escapee in tropical and sub-tropical areas including in Australia, Hawaii and Southeast Asia. Although not a declared weed species in Australia, Asian Melastome is known to rapidly spread, naturalise and form dense thickets in a variety of habitats including eucalypt forests, open land and wetlands.



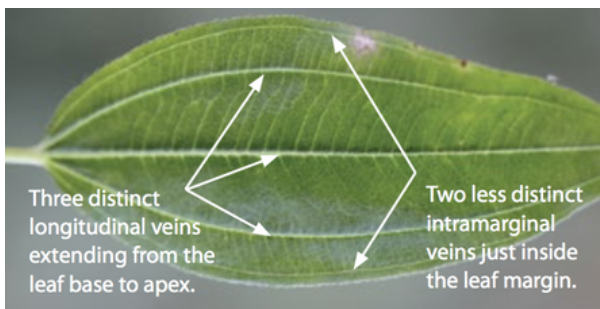
When purchasing Blue Tongue, check to see if the plant is in keeping with the diagnostic features outlined below. In particular, examine the veins on the leaves. It is important to examine several mature leaves to confirm the number of veins present as there can be some variation. Only the introduced species will have five distinct longitudinal veins.

The recommended treatment for adult plants of Asian Melastome is the cut stump method with glyphosate 1:5 in water or Vigilant (Picloram) gel neat. Basal barking can also be effective with Fluroxypyr 333g/L (e.g. Starane Advanced) 30ml per litre of diesel or other recommended mixing agent.

More helpful I.D. notes over page.....

Know your Melastome?

Blue Tongue or Native Lassiandra
Melastoma malabathricum subsp.
malabathricum
(was *Melastoma affine*)



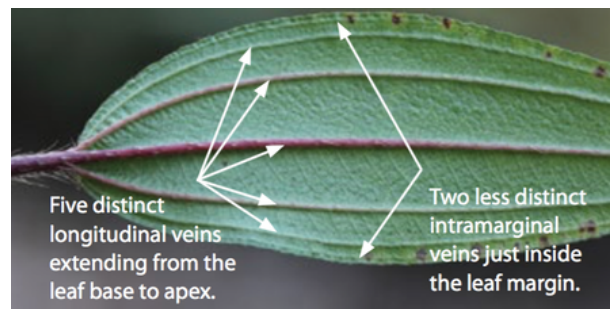
Leaves: Generally 3 distinct longitudinal veins and 2 less distinct intramarginal veins. Leaves hairy but thinner than Asian Melastome. Leaf stalks purple or white with short hairs.

Flowers: Pinkish purple flower (also a white form). Five petals about 20-30mm long. Flowers all year round.

Fruit: Red and green outside, purple on inside, hairy to 10mm.

Habit: Shrub 1-2 metres high, growing in moist areas such as gullies and freshwater wetlands.

Asian Melastome
Melastoma candidum
(also known as *Melastoma septemnerium*)



Leaves: Generally 5 distinct longitudinal veins and 2 less distinct intramarginal veins. Leaves hairy but thicker and stiffer than Blue Tongue. Leaf stalks purple or white with long hairs.

Flowers: More purple and a larger flower than the native Blue Tongue. Five petals about 25-32mm long.

Fruit: Bright raspberry red in colour.

Habit: Grows to 2 metres high and is more dense and robust than the native Blue Tongue.



SNIPPETS

Retail giant Bunnings under fire for stocking invasive weeds that threaten Australian ecosystems *Article in ABC Rural posted 15 July by Else Kennedy*

Major Australian nurseries, including retail giant Bunnings, are selling plants listed by governments and their own industry body as invasive weeds. The Invasive Species Council says escaped garden plants have already contributed to at least four Australian extinctions, and are costing the agriculture industry over \$4.3 billion to manage each year.

<https://www.abc.net.au/news/rural/2024-07-15/bunnings-criticised-for-stocking-invasive-weed-species-vic/104084222>

Let's give a shout to our fantastic local native plant nurseries: Firewheel Rainforest Nursery, Northern Rives Natives and Friends of the Koala.



Our 'frog saunas' could help save endangered species from the devastating chytrid fungus *Article in The Conversation posted June 27, 2024 by Anthony Waddle*

All over the world, frogs are being wiped out by the chytrid fungus. At least 500 species have declined, including as many as 90 species now presumed extinct. This catastrophic and ongoing biodiversity loss surpasses the devastation wrought by other notorious invasive species such as cats, rats and even cane toads. Short of removing species from the wild and treating them in captivity, few strategies exist to deal with the chytrid threat. Our new research, published today in the journal Nature, offers a promising option.

<https://theconversation.com/our-frog-saunas-could-help-save-endangered-species-from-the-devastating-chytrid-fungus-231605>



Pollution affecting pollinators and other beneficial insects, study finds *Article in ABC Rural posted 7 August, 2024 by Alys Marshall*

In short: Air pollution can disrupt pollination and the regulation of pest insects by 40 per cent, a study published in Nature Communications shows. Pollutants such as ozone impact bees and other bugs' ability to locate flowers and crops.

What's next? An author of the study says farmers have a crucial role to play in working to reduce the stressors on beneficial insects.

<https://www.abc.net.au/news/rural/2024-08-07/significant-reduction-in-pollination-due-to-air-pollution/104136136>



EVENTS & WORKSHOPS

Get your diaries out people, there is a lot on offer through August and early September!



HEAL the RIVERS - Durrumbul (Brunswick River)

This workshop launches Heal the Rivers, a three-year project focused on Indigenous-led catchment restoration in the Brunswick, Tweed, Richmond and Clarence catchments.

Please join us for a community discussion around creating Culturally led action plans for river restoration across Bundjalung jagun.

Date: Thursday, 22 August

Time: 9:30am-3pm

Place: Durrumbul Hall (16 Mud Brick Lane, Main Arm)

Together We Can Heal the Rivers



This project is funded by the Australian Government through the Northern Rivers Recovery and Resilience Program 2022-23 administered by the NSW Reconstruction Authority.



<https://events.humanitix.com/heal-the-rivers-durrumbul>



EVENTS & WORKSHOPS

FIELD



DAY

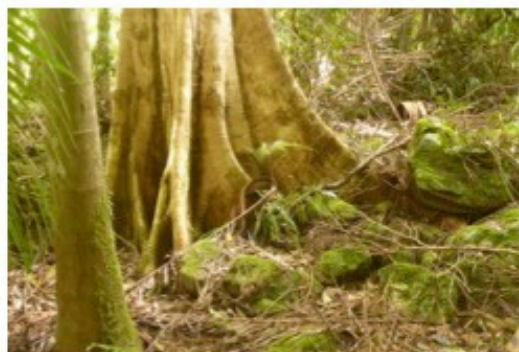
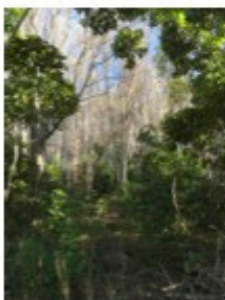
 **Wilsons Creek Huonbrook Landcare** 

 **RESTORING RAINFOREST IN TIMES OF CHANGE** 

WHEN: FRIDAY, 23 AUGUST 2024
TIME: 9am - 12pm
WHERE: Wilsons Creek - Location information on Registration
COST: FREE
INCLUDES:

- Forest Walk
- Restoration talk
- Morning tea
- Planting

REGISTER: <https://events.humanitix.com/wilsons-creek-huonbrook-landcare-field-day-restoring-rainforest-in-times-of-change>



**GONDWANA
RAINFOREST TRUST**
Wildlife. Climate. People. Planet.



This project has been assisted by the NSW Government through its Environmental Trust

<https://events.humanitix.com/wilsons-creek-huonbrook-landcare-field-day-restoring-rainforest-in-times-of-change>



EVENTS & WORKSHOPS

BANGALOW KOALAS

Koala Tree Planting

Thurs 22nd August 2024

Time 9.00am start

Where Nashua - 1220 trees

RSVP Bookings are essential, email to book your place today at:
president@bangalowkoalas.com.au



BANGALOW KOALAS

Koala Tree Planting

Sat 24th August 2024

Time 10.00am start

Where Nashua - 1110 trees

RSVP Bookings are essential, email to book your place today at:
president@bangalowkoalas.com.au



president@bangalowkoalas.com.au



EVENTS & WORKSHOPS

Northern Rivers Community Foundation FREE Grant Writing Workshops



The NRCF grants team is hitting the road this month for a series of FREE Grant Writing Workshops across the Northern Rivers, with six locations to choose from.

Come along and learn tips about seeking and securing funding for your community projects. We'll run you through the basics of crafting great proposals and answer the grant writing questions that keep you up at night.

💡 Grant writing beginners welcome!

📍 When and where:

MURWILLUMBAH: Monday 19 Aug, 10 am – 12 pm

KYOGLE: Tuesday 20 Aug, 1 pm – 3 pm

BALLINA: Wednesday 21 Aug, 10 am – 12 pm

LISMORE: Monday 26 Aug, 1 pm – 3 pm

CORAKI: Thursday 29 Aug, 11 am – 1 pm

GRAFTON: Monday 2 Sep, 11 am – 1 pm

BYRON: Tuesday 3 Sep, 10 am – 12 pm

Don't miss this opportunity to enhance your skills and boost your chances of receiving funding from different government and philanthropic sources.

Places are limited for each workshop, so book your spot today!

<https://nrcf.org.au/free-grant-writing-workshops/>



EVENTS & WORKSHOPS

The Great Glossy Count September 7 - 8, 2024

The Glossy Black Conservancy is collaborating with Birdlife Australia who is hosting the third annual Great Glossy Count. Who's in?

Register here: <https://glossyblack.org.au/great-glossy-count/>



In the lead-up to the Count, The Glossy Black Conservancy and Birdlife are hosting a series of **FREE Field I.D. workshops** to brush up on all things Glossy and learn how to record your survey data using the Birdata app.

For the Byron / Tweed region the local workshop will be held on **Saturday 31 August 10:00am-12:30pm** at Pottsville Environment Centre, for bookings <https://events.humanitix.com/2024-great-glossy-count-glossy-black-cockatoo-id-workshop-32vgyru9>

There will also be a virtual workshop you can tune into from wherever you are on **Tuesday 27 August 6.30pm - 8.00pm**, to register visit: <https://www.eventbrite.com.au/e/2024-great-glossy-count-id-webinar-for-glossy-black-cockatoos-tickets>



EVENTS & WORKSHOPS



NORTHERN RIVERS FRIENDS OF THE KOALA KOALA HOSPITAL

Join us on SAVE THE KOALA DAY

September 27th 2024 | 12:00PM - 14:00PM

@Crystalbrook Byron Bay
for a delicious lunch with a glass of bubbly on arrival

special speaker: **Geoff Cousins AM**

purchase your ticket now \$120 p.p



www.friendsofthekoala/save-the-koala-day-luncheon

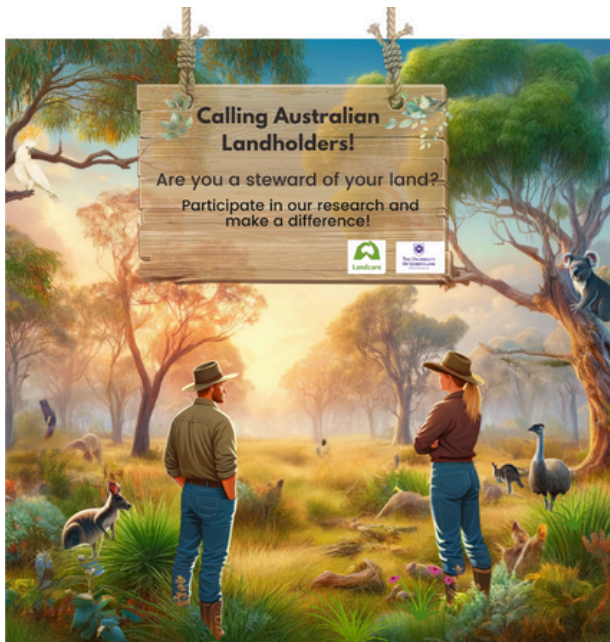
Crystalbrook byron

Lunch for Koalas

<https://events.humanitix.com/save-the-koala-day-friends-of-the-koala-luncheon>

.....

Landcare NSW is calling all landholders



Take a stand for the land and have your say.

Are you a steward of your land? We value your voice! Just 10 minutes of your time can contribute to vital research and improve how we communicate private land conservation.

Plus, as a token of our appreciation, you'll have a chance to win one of five \$200 gift vouchers!

Start making a difference today. Please click the link below or scan the QR code to participate.

 **Calling Australian Landholders!**
Take a stand for the land and have your say.

This research has received ethics approval
(Approval Number: 2024/HE000965).



https://uniofqueensland.syd1.qualtrics.com/jfe/form/SV_01yPsAcSy4yifvo

Byron Bird Buddies August Program

<https://www.byronbirdbuddies.com.au/>

Byron Bird Buddies (BBB) www.byronbirdbuddies.com.au Monitoring Program - July 2024		
<ul style="list-style-type: none"> • BBB – July & August - biannual survey for KBA areas in Northern Rivers – Mt Jerusalem NP (Wilson Creek, Koonyum Range & Middle Ridge Road & Cowan Creek Road) Goonengerry NP & Upper Coopers Creek Property) – Nightcap NP – Mt Nardi, Protestor Falls, Rummy Park & Rocky Creek Dam with assistance of RBB. • Commence (July) nesting season for Bush Stone-curlew (BSC). Ongoing monitoring for BSC locations and record on BBB on-line SS – Check fortnightly for pairs and weekly for nest. Contact BBB if you wish to be involved contact - byronbirdbuddy@gmail.com <p>A national BirdLife Australia citizen science project -count birds in your backyard at any time or just seasonally during July - https://www.birdsinbackyards.net/content/article/Winter-survey-time-Who-visiting-your-garden – You will need to download the BirdLife App. Each quarter BLA launches a seasonal survey. By dividing the year up by seasons, so they can track changes in bird communities at the same four times each year – Summer (December & January), Autumn (March & April), Winter (June & July), and Spring (September & October).</p>		
Date & Time	Where	Why
Sunday 7th 09.00 start	Byron Wetlands & Belongil Estuary – Meet at Byron Wetlands (09.00–10.00) – then Belongil Beach -meet at Elements Carpark end of Bayshore Drive byronbirdbuddy@gmail.com Mobile 0428864378 - Booking necessary	BBB - BirdLife National Shorebird Monitoring High Tide 0907 1.16 Low Tide – 14.30 .33
Monday 8th 08.00 start	Brunswick River & Brunswick Salt Marsh. Booking necessary Meet end of North Head Rd – New Brighton. byronbirdbuddy@gmail.com or 0428864378	BBB - BirdLife National Shorebird Monitoring High Tide 9.47 -1.17 Low Tide 15.17 - 0.37
Tuesday 9th 08.00 start	Where: Koonyum Range Mill Rd - Booking necessary. Meet: – Wilson Creek Rd & Koonyum Range Rd & carpool. Contact: byronbirdbuddy@gmail.com	BBB – survey KBA – monitoring (1st survey for 2024-25)
Wednesday 10th 08.00 start	Upper Crystal Creek – for more details bandjmcnaughton@bigpond.com . next outing decided at the end of previous survey.	RBB – survey & outing
Sunday 14th 08.00 start	Byron Wetlands Contact madzafi@gmail.com	BLNR- survey & outing
Tuesday 16th 08.00 start	Mt Jerusalem NP – Middle Ridge Rd & Sth Chowan Creek. Meet at Main Arm store & car pool. byronbirdbuddy@gmail.com or Mobile 0428864378	BBB - survey – KBA site (1st survey for 2024-25)
Saturday 20th To be allocated	Ballina – Several sites to choose from or a site will be allocated – for time & location Contact Hans Wohlmuth hwohlmuth@gmail.com. Hight tide 7.15	Ballina - BirdLife National Shorebird Monitoring
Monday 22nd 08.00 start	Seapeace. – private property - must register contact: byronbirdbuddy@gmail.com for directions. Or Mobile 0428864378	BBB Full site survey
Tuesday 23rd 8.00am start	Vallances Road - Mullumbimby – must register. Register with Vicki -davvix1@gmail.com . Meet at the ponds bottom of Vallances Rd	BBB – Morning survey – for BBB-BSC reporting -
Wednesday 24th 08.00 start	To be advised - richmondbrunswickbirdwatchers@gmail.com or bandjmcnaughton@bigpond.com	RBB – outing will decide at the end of previous survey.
Thursday 25th 08.00 start	The Wallum site – meet at the end of Omega Court. For more information. Contact byronbirdbuddy@gmail.com	BBB – site survey
Tuesday 30th 08.00 start	Montecollum – private property. For details and address contact byronbirdbuddy@gmail.com	BBB – survey

.....

FUNDING

Living Carbon Grants



**North Coast applications have now opened.
Applications close 6 December, 2024 at 5pm.**

Managing carbon is both a challenge and an enormous opportunity for landholders. If you are a landholder in NSW, you may be eligible for a NSW Government grant to set up a carbon planting project. This could help you secure the health of your land, improve productivity, and unlock new income streams. Your land could be used to revegetate habitats for threatened or iconic species such as koalas. We are partnering with the NSW Koala Strategy and NSW Local Land Services to work with landholders who share our commitment to acting on climate change.

Eligibility

We are investing \$5 million in Living Carbon grants to assist eligible applicants in delivering carbon abatement through planting projects in 3 regions in NSW:

- the Riverina Local Land Services region
- the North Coast Local Land Services region
- the MidCoast Local Government Area.

Successful applicants will receive up to \$200,000 of grant funding, and the landholder is expected to commit funding and/or in-kind contributions to complete the project.

Link for full program details: <https://www.energy.nsw.gov.au/business-and-industry/programs-grants-and-schemes/primary-industries-productivity-and-abatement/living-carbon>



NSW Climate and Energy Action



FUNDING

Funding opportunity for local Byron Shire Farmers

We are very excited to let you know about our first ever Byron Shire Council Regenerative Agriculture Small Grants funding program.

A limited number of small grants of up to \$3,500 are available to support on-farm activities that will improve the ecological functions of your land, quality of your soil, and increase production.

If you are a primary producer, market gardener or small-scale farmer on land in the Byron Shire, you are invited to apply!

Applications are currently open and close on the **16 September 2024**.

For more information and to apply visit:

[Regenerative Agriculture Small Grants Program - Byron Shire Council \(nsw.gov.au\)](https://www.byronshire.nsw.gov.au/regenerative-agriculture-small-grants-program)

We are keen to make the application process as easy as possible for you, so please don't hesitate to reach out if you would like to discuss your project idea or ask questions about the application process.



WEED OF THE MONTH

Monkey's Comb *Pithecoctenium crucigerum*

Weed I.D. sourced from Brisbane City Council

Monkey's comb is a fast-growing vine with climbing tendrils. It is native to Central and South America and the Caribbean.

In summer it produces cream and yellow flowers. It is a vigorous climbing woody vine with heart shaped leaves. It can grow up into the canopy of trees smothering and outcompeting other plant.

Monkey's comb has been found in Tweed & Byron Shires, as well as in the Greater Sydney region. It climbs, smothers and outcompetes the other plant – do not let it establish!

This vine is not noted to have fruit in Australia. New plants can grow from stem fragments, which grow roots when they come into contact with soil. Plants can be spread by people dumping garden waste and in waterways during floods.

Brisbane City Council's recommended control methods are Cut stump method or by foliar spray.



WORKING BEES

Why not get out and get involved in one of our local groups?

For all Landcare Working Bees please wear protective clothing - long pants, long-sleeved shirt, closed-in shoes, hat, gloves and bring water, sunscreen, and insect repellent. Please always contact the group co-ordinators before attending a working bee as plans do change!

Bangalow Land and Rivercare, Bangalow

WHEN: every Saturday 8:30am

WHERE: find out from

CONTACT: Noelene Plummer bangalowlandcare@gmail.com 0431 20 0638 6687 4470

Friends of Lilli Pilli (Byron Bay)

WHEN: 1st Saturday of the month 3:30pm - 5:00pm

WHERE: At entrance to Lilli Pilli (contact Deb).

CONTACT: Deb Jorgensen deborah.jorgensen60@gmail.com 0434 254 802

Green and Clean Awareness Team, Byron Bay

WHEN: 3rd Sunday of the month 9:00am

WHERE: Meet Main Beach, Byron Bay

CONTACT: Peter Farmakis peter.farmakis@gmail.com 0488 715 565

Heritage Park Landcare, Mullumbimby

WHEN: Saturdays 9:00am – 11:00 am

WHERE: Heritage Park, Mullumbimby

CONTACT: Diana Hughes bromspot@gmail.com

Jinangong Landcare, Ocean Shores

WHEN: 1st Sunday of the month

WHERE: The Tunnel Road, Ocean Shores

CONTACT: Ian Parer ianparer@hotmail.com

Mullum Town Landcare, Mullumbimby

WHEN: Morning of last Sunday of the month

WHERE: find out from John Tann

CONTACT: John Tann johntann99@gmail.com

Ocean Shores Landcare, Ocean Shores

WHEN: each Thursday at 8.30 – 11.00 am (8.00am DST)

WHERE: corner of Yallakool Drive and Warrambool Road, Ocean Shores

CONTACT: David Kemp dnkemp77@gmail.com 0427 650 861

Suffolk Park Dunecare

WHEN: 8.30 - 10.30 every fourth Sunday of the month

WHERE: find out from:

CONTACT: Rebekah O'Flaherty rebekahoflaherty@gmail.com 0428 942 903

Tallowood Ridge Locality Landcare

WHEN: Second Saturday of the month from 3pm (winter), 4pm (summer).

WHERE: Tallowood Ridge Estate, Mullumbimby

CONTACT: Joanne McMurtry jmcmurtry@bigpond.com

Tyagarah Landcare

WHEN: Each Thursday 9:00am – 11:00am

WHERE: 23 Prestons Lane, Tyagarah

CONTACT: Bela Allen bela_allen@yahoo.com 6684 7113

Can't find a group near you? We have many other groups who meet on an ad hoc basis (contact us for more details) or if there isn't an existing group in your neighbourhood or you are interested in

LINKS

- Arakwal <http://arakwal.com.au/>
- Australian Association of Bush Regenerators <http://aabr.org.au>
- Border Rangers Alliance http://www.greasterranges.org.au/border_ranges/overview/overview
- Bangalow Koalas <http://www.bangalowkoalas.com.au/>
- Bangalow River and Landcare <http://www.bangalowlandcare.org.au/>
- Big Scrub Landcare <https://www.bigscrubrainforest.org.au/>
- Brunswick Valley Landcare <http://www.brunswickvalleylandcare.org.au/>
- Byron Bird Buddies <http://www.byronbirdbuddies.com.au/>
- Byron Community College <http://www.byroncollege.org.au/>
- Byron Shire Council <http://www.byron.nsw.gov.au/>
- EnviTE www.envite.org.au
- Environmental Trust <http://www.environment.nsw.gov.au/grants/envtrust.htm>
- Friends of the Koala www.friendsofthekoala.org
- Federal Landcare Inc federalandcare@gmail.com
- Local Land Services www.northcoast.ils.nsw.gov.au
- North Coast Local Land Services <http://northcoast.ils.nsw.gov.au/>
- Border Ranges Richmond Valley Landcare www.brrvln.org.au
- Mullumbimby Community Gardens <http://mullumcommunitygarden.wordpress.com/>
- North Coast Nature <http://www.northcoastnature.org.au/>
- Richmond Landcare Inc. <http://www.richmondlandcare.org/>
- Rous County Council (formerly Far North Coast Weeds) <http://rous.nsw.gov.au/>
- Soilcare http://www.soilcare.org_
- Tweed Landcare Inc. <http://www.tweedlandcare.org.au/>
- Wilson's Creek Huonbrook Landcare <http://www.wilsonscreeklandcare.mullum.com.au/>

For information about Landcare or other natural resource issues in Byron shire please contact



Landcare Coordinator, Alison Ratcliffe 0421 244 640
info@brunswickvalleylandcare.org.au

www.brunswickvalleylandcare.org.au

