



Brunswick Valley
Landcare

Newsletter

Conserving and restoring from forest to foreshore



.....
BRUNSWICK VALLEY LANDCARE IS A REGISTERED CHARITY ON PEGS AND PUBLINC



Local Pegs app allows businesses to offer discounted prices to locals. You can opt to keep the discount, tip the business, or donate to a local charity



As a Publinc member, not only do you get discounts on food and drinks at Hotel Brunswick, but you can donate your points to a local charity



.....
This initiative is made possible by the NSW Landcare Program. A collaboration of Local Land Services and Landcare NSW supported by the NSW Government.

BVL NEWS

2024, that's a wrap

Thanks to BVL members and friends who joined us for 2024's AGM and Christmas party on Sunday 24 November. Special thanks to Chris and Isabelle from Tweed Landcare for making the trip down and Chris for your inspiring presentation on Tweed Landcare's "Filling in the Biodiversity Gaps 9" NSW Environmental Trust project. Impressive.

Big thanks also to BVL's locality groups who provided updates on their activity of the last twelve months, it's incredible what you dedicated bunch of Landcarers do for our environment. President Pete & Julie Ryan, thanks for your star catering efforts and thank you to all who brought delicious offerings to share. It's always a pleasure when we get the chance to come together over a meal with festive good wishes.



Pink Euodia Melicope elleryana Image: Alison Ratcliffe

Results of this year's AGM saw Peter Ryan and Jenny Hartigan returned as President and Treasurer respectively. Thank you both for your tireless work and commitment to BVL's ongoing success. Sue Haining stepped down as Secretary this year, passing the baton to Felicity Watsford. Huge thanks Sue for your dedication to the role of Secretary and welcome aboard Felicity, thank you for stepping up.

Sue Haining is returned as Vice President. Returning General Committee members for the next year are Doug Porter, Deja Ryan, Rob Black, and Caroline Kinsella. Great team – thanks to you all for your fine stewardship and service!



BVL NEWS

2024, that's a wrap

Below is the summary that Alison & Harry presented to the AGM on BVL's activities and programs since 2023's AGM. It's been a big twelve plus months.

In December 2023 BVL established itself on Salesforce, a digital content management system, that will help streamline the many connections, relationships and contacts across BVL network and activities.

In January 2024 BVL Committee members and staff joined forces with some of the Keepers of the Byron Bay Wildlife Sanctuary to shake donations buckets at The Farm Byron Bay, raising much-needed funds for the Wildlife Hospital's operations.

Also in January, logistics planning commenced for the 2024 Mother's Day planting, BVL's 13th, with Committee members out meeting landholders on site visits.

BVL secured additional funding under North Coast Local Land Services' Matters of National Environmental Significance (MNES) program, bringing BVL's number of sites to 13. We were able to include several sites impacted by the 2022 landslips, adding to the existing program sites that were impacted by the 2019-2020 bushfires.

Work on the revised edition of the recently published Revegetating Streams in the Brunswick Catchment commenced in earnest in early 2024.

BVL assisted Tweed Landcare in running Regional Seedbank workshops designed to train up volunteer seed collectors.

In March the Landcare Coordinators and Project Officers attended a weekend seed and weed ID campout hosted by the community of Korinderie Ridge.

BVL supported publication of the fabulous Native Plants for Native Wildlife poster, the work of Margie Hall.

Byron Shire's Land For Wildlife network grew following a series of LFW Habitat Assessments, and connections with enthusiastic new landholders, passionate about our local native species.

Continued over.....



BVL NEWS

2024, that's a wrap

BVL's Community Officer, Joanne McMurtry coordinated a series of successful BVL workshops on topics including Plant ID, Weed ID and Tools Maintenance. Joanne also arranged a Volunteer Training workshop and oversaw the establishment of three new Landcare locality groups – BVL welcomed Upper Main Arm, Upper Coopers Creek and Yelgun locality groups into the fold. BVL welcomed Alison back to resume Coordinator duties mid-way through 2024 after a period of extended personal leave. So great to have you back Aly.

The 13th Annual Mother's Day planting was up against the weather this year and had to be postponed. Thanks for sticking with us everyone for the rescheduled June 16th planting, a great day with community planting 1500 trees. Big thanks to 2024's partners Northern Rivers Community Foundation, Byron Shire Council, Little Valley Distribution, Mullum Chamber of Commerce, Bay FM, Byron Echo and Stone & Wood.



In June BVL attended The Border Ranges Alliance Forum in Ballina, initiative of the Great Eastern Ranges, and then went on to attend the Rainforest Connections Conference organised by NSW Government Dept of Climate Change, Energy, the Environment & Water. An inspiring few days!

Through funding from the Reconstruction & Recovery Authority, BVL was commissioned by BSC Flood Recovery Officer Mel Bloor to run a Post-Flood Weed workshop at Durrumbul 29 June. The focus was to educate people on best practice weed management techniques, based on methods of dispersal and growth. Presenters Dave Rawlins and Sevy Sandsmark were a hit!

We had the opportunity to later tour project sites with the LLS team who were greatly pleased with the restoration outcomes in progress and have subsequently released a further round of funding to keep this work going through to June 2025. thanks Jai Sleeman for your support.

In July, Alison and Harry went along to support a Broken Head Landcare's community tree planting under this important Midgen Creek corridor connectivity project, funded through NSW Environmental Trust.

Continued over.....

BVL NEWS

2024, that's a wrap



The Community Environment Network (CEN) organised a Regional Land For Wildlife Forum in Lismore in late July which Alison & Harry attended – great to connect up with other regional program providers to support each other and learn from their experiences and challenges faced.

The Junior Landcare program funded by FRRR started rolling out in August, led by Ray Moynihan and Deb Jorgensen. Seven local schools participated, each with their own unique workshop and tree planting.

August 19-21 was the NSW State Landcare Conference in Sydney, held at the historical site Quarantine Station at North Head.

Jagun Alliance brought people together in late August at Durrumbul Hall to learn more about Jagun's Heal the Rivers project in the Brunswick Catchment. We're keenly watching that space.

September had us headed to North Coast Local Land Services HQ for a Sub-Regional Working Group meeting with other members of the North Coast Regional Landcare network. Harry also headed to Lismore to attend the Richmond River Collaborative Partners Working Together event at Living Lab to learn from the model being applied in that catchment's restoration. In partnership with Byron Shire Council, BVL have since been successful in two Riparian Restoration Projects - Caring for Catchments and the Northern Rivers Watershed Initiative. On-ground works will commence in 2025.

Two further projects were developed and pitched for funding, one to support our local Land For Wildlife Network through educational workshops, the other to work with Mullumbimby & District's Neighbourhood Centre to establish food gardens to fuel their community meal programs. Applications for grants in both cases were unsuccessful so BVL continues to explore means of getting both up in 2025.

November was a busy month – Harry attended the North Coast Regional Landcare Community of Practice Conference in Coffs. BVL, in partnership with SoilCare, ran a Field Day with the wonderful Dr Judi Earl "Healthy Soils for Healthy Livestock" hosted at Osho Mevlana Foundation.

We prepared to launch the now-completed, newly revised Revegetating Streams in the Brunswick Catchment brochure with event funded by North Coast Local Land Services Riparian Restoration team. Again, heavy rainfall and flooding meant we had to postpone that 22 November event in consideration of everyone's safety. We're going to try again in 2025 on Friday February 14 – stay posted early in the new year for confirmed details.

Through December we're doing our best to wrap the year's duties. Alison & Harry have been out at our Riparian Restoration project sites establishing baseline photopoints for project monitoring, this will continue early into 2025.

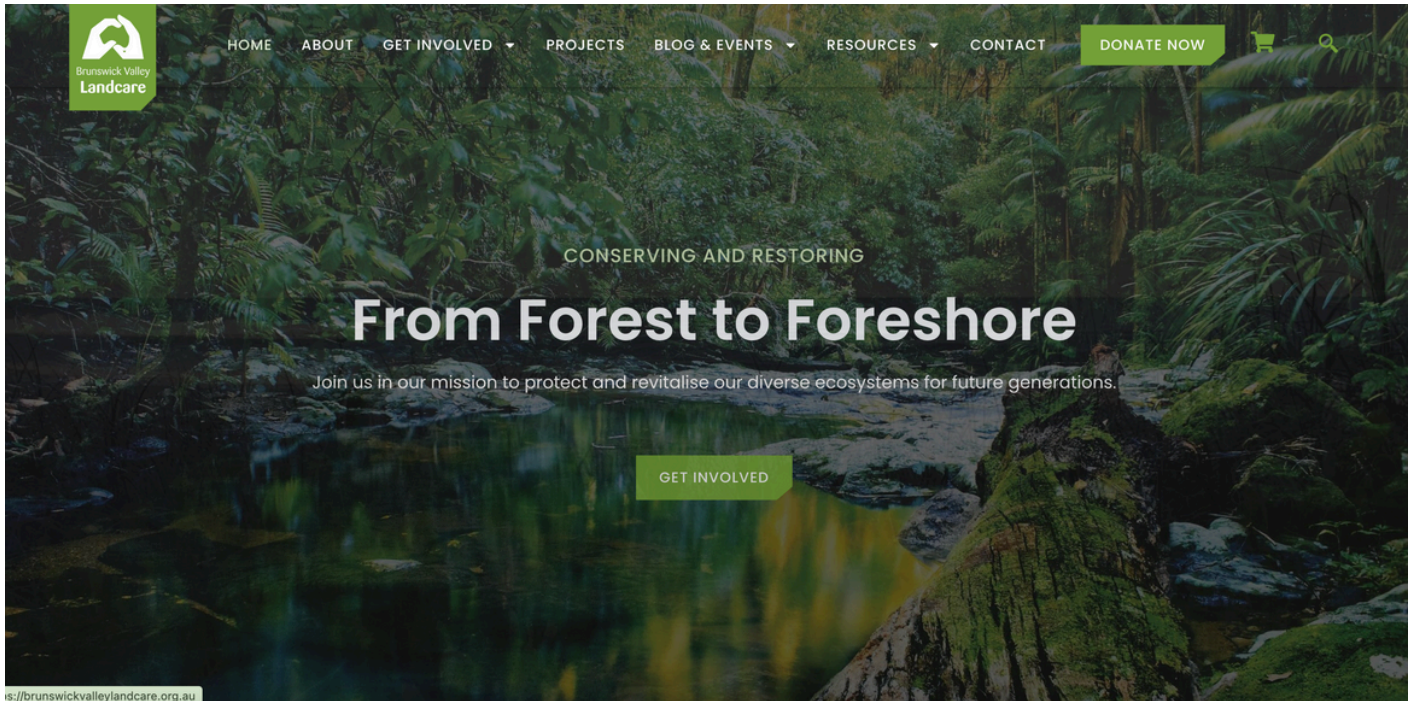
And now here we are at the last BVL newsletter for 2024. We hope you've had a good year.

Seasons Greetings to you all - wishing you a happy and healthy New Year.



BVL NEWS

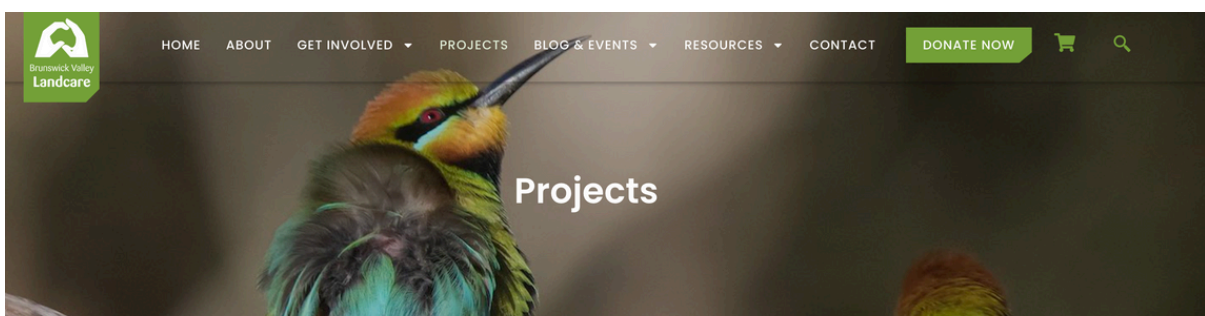
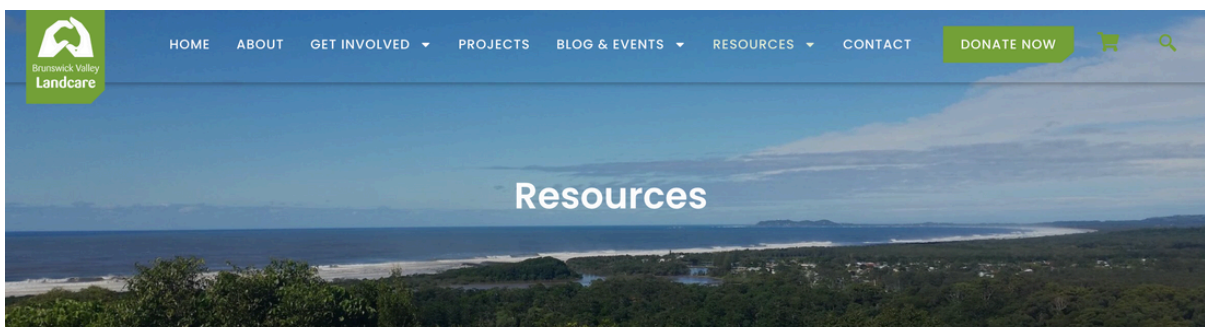
BVL's new look website - please have a browse....



Very big thanks to volunteer BVL Committee member Deja Ryan for driving the redesign of BVL's website, which went live in December.

Big thanks also to Dana Khader from local Agency Eight for delivering such a beautiful design for us, it's clean and elegant, thank you very much agencyeight.com.au

You'll be able to find the fabulous range of Resources, Guides & Kits we have available, as well as updates as they come from BVL Projects, events & activities. Bear with us while we still make some further content edits and uploads, it will be a work in progress over the summer. If there's anything you're looking for but can't find, please drop us a line via info@brunswickvalleylandcare.org.au



BVL NEWS

News from Mullum Town Landcare

Mullum Town Landcare Group has been meeting once a month for many years. Currently we are working along Saltwater Creek next to Mullumbimby Museum, removing Camphor Laurel, Ochna, Syngonium and other invasives. Saltwater Creek here is more of a billabong which refreshes in times of flood. The steep banks of the billabong are now ready for planting which might be a good opportunity to refer to the new guide: Revegetating Streams in the Brunswick Catchment and choose appropriate plants.

Busy Byron Bird Buddies



19 years ago, Byron Bird Buddies morphed from a small group (called Belongil Bird Buddies) which was focused solely on the Belongil Estuary in Byron Bay, to a northern rivers bird buddy group promoting the conservation of avian habitats from the hills to the sea. In that time, we've seen an explosion of people wanting to engage with bird watching and so our annual activities reflect that by offering walks, talks, bird counts, art events and the development of educational materials.

Byron Bird Buddies (BBB) remains a small, self-funded community education and conservation group focusing on the preservation of habitat for resident and migratory birds i.e., protection of their roosting, breeding and feeding areas.

We're saving up the total tally of all the talks and walks and bird counts for our twentieth anniversary, but there's been a lot. In the last twelve months Byron Bird Buddies have spent a whopping 270 hours doing surveys for conservation.

Each year, Byron Bird Buddies produced an informative Annual Report. You can find a copy of this year's (and previous) via the link below, it's a great read - thanks Byron Bird Buddies!

<https://www.byronbirdbuddies.com.au/2024/12/08/bbb-annual-report-2023-2024/>



BVL PROJECTS UPDATE

Riparian Restoration field work

Alison and Harry have been freed from behind their computers, watch out! Over the last few weeks they have been visiting project sites to establish baseline photo monitoring points to track progress of on-ground restoration works for reporting. Nothing better than a before and after photo to demonstrate outcomes. There's some pretty amazing sites and lovely landholders in both projects, Caring for Catchments and the Northern Rivers Watershed Initiative, both collaborative partnerships with Byron Shire Council. Sharing with you some images of the magnificent natural assets we've come across over the last weeks.



Images above and below, cute pink fungi;
Image top right, a mighty Strangler Fig's embrace
of a Melaleuca; Image bottom right, look closely,
an owl pellet, it's shape suggesting possibly that of
a Sooty Owl or a Powerful Owl.



BVL PROJECTS UPDATE

BVL joins Positive Change For Marine Life's Field Day

Article by Alison Ratcliffe

I attended Positive Change for Marine Life's Wildlife Habitat Creation & Community River Restoration Picnic on Saturday 7th December 2024 at their riparian planting site along the Bruns River. The trees were planted in September last year and are looking really good. I talked about our Revegetating Streams brochure - now available on our website [Revegetating Streams](#).

Alongside the tree planting Wildbnb Wildlife Habitat have been installing habitat solutions including nesting hollows, bee homes and perches. They have had monitoring camera's out for the last few months and a pair of Rosella's inspected one of the boxes but didn't nest. A kookaburra has been using the nesting perch to hunt every day. As the planted trees grow the bird, animal and insect life will increase. All attendees also got to make a native bee hotel with Wildbnb to take home with them. Picture of mine sitting on my deck. Jan from Byron Bird Buddies then took everyone on a bird walk.

The riverbank is already looking so much better than it did by fencing out the cattle. Lucy's experiments to plant mangrove seeds are starting to show positive results. To learn about PCFML's Rewilding the floodplains project and see the before photos visit their website - there's a great video <https://pcfml.org.au/our-programs/rewilding-our-floodplains-australia/>

Continued over....



Above, Alison's DIY native bee hotel; top right, Picnicers picnicking; below right, presentation by Wildbnb's David Brook with a custom microbat chamber



BVL PROJECTS UPDATE

BVL joins Positive Change For Marine Life's Field Day

BVL has been partnering with PCFML to restore the Brunswick River as well as many other partners. The site where the field day was held was first visited by myself and Peter Ryan, BVL's President a few years back, because the landholder was concerned about the erosion of the riverbanks downstream of this site.

The erosion was so significant it needed hard engineering works so we talked to Byron Shire Council who were then successful in getting funding in partnership with Local Land Services to install wood fillets and coir logs, accompanied by a stabilisation planting further up the bank along 160m stretch of the Bruns. The planting that BVL & PCFML volunteers participated in back in June 2023 is going strong, thanks to ongoing maintenance by the landholder and the exclusion of livestock. Before & images below, top: BSC supplied; below: A. Ratcliffe.



BYRON SHIRE COUNCIL NEWS

Flying-fox education program recognised at NSW awards

Media release published 6 December 2024



Claudia Caliarì pictured receiving the award from Costa Georgiadis

Congratulations to BSC Biodiversity Team's "No Bat No Me" project on winning a Highly Commended award at the 2024 Local Government NSW Excellence in the Environment Awards.

Claudia Caliarì, Council's Biodiversity Project Officer and the force behind the project, said the recognition was a wonderful way to celebrate the flying-fox education project, No Bat No Me was a community engagement project aimed at teaching people about how crucial flying-foxes are in the natural environment.

"Flying foxes are long-distance pollinators, they disperse seeds and create habitat for many other important species, and they are fascinating," Ms Caliarì said.

"The clearing of habitat means flying-fox colonies are found in some urban areas of the Byron Shire and the No Bat No Me focused on education about these fascinating native animals and challenges this can cause" she said.

"We took a very broad approach, talking to children in preschools and schools, going to Splendour in the Grass and other events as well as through advertising and social media.

"This award reflects the strong collaboration between Council, WIRES and wildlife volunteers, particularly Lib Ruytenberg and Annie Crowley, local schools, flying-fox educators and wildlife rescuers whose contributions were essential to the success of the project," Ms Calliarì said.

No Bat No Me was funded by WIRES.

More information about [flying-foxes](#) is on Council's website.





LAND FOR WILDLIFE

News from the network, from afar and locally

Community Environment Network (CEN), who administer the Land For Wildlife Program in NSW and ACT, publish an annual newsletter. In case you missed it earlier in the year, here it is:

https://cen.org.au/wp-content/uploads/2024/11/2024-NSW-LFW-Newsletter_email.pdf

Community Environment Network have also just upgraded their website, and whilst CEN's project work is focussed on the Central Coast, the LFW program is state-wide.

There's plenty of inspiring stories to learn from about community in action.

<https://cen.org.au/about-us/>



Welcome to the network to the Johnson, Lavery, Dressler families (pictured) as well as the Gardiner & Kotlarczyk families (not pictured)

In the Byron Shire in 2024, we've expanded the number of registered properties and met some incredible people passionate about creating and protecting habitat for our native fauna species. BVL looks forward to working with the Byron Shire LFW network in 2025 and offering opportunities to connect.

If you're interested in joining, you can complete an expression of interest form here:

<https://brunswickvalleylandcare.org.au/get-involved/land-for-wildlife/#Apply>



CRITTER CORNER!

Christmas beetles Genus *Anoplognathus* Family *Scarabaeidae*

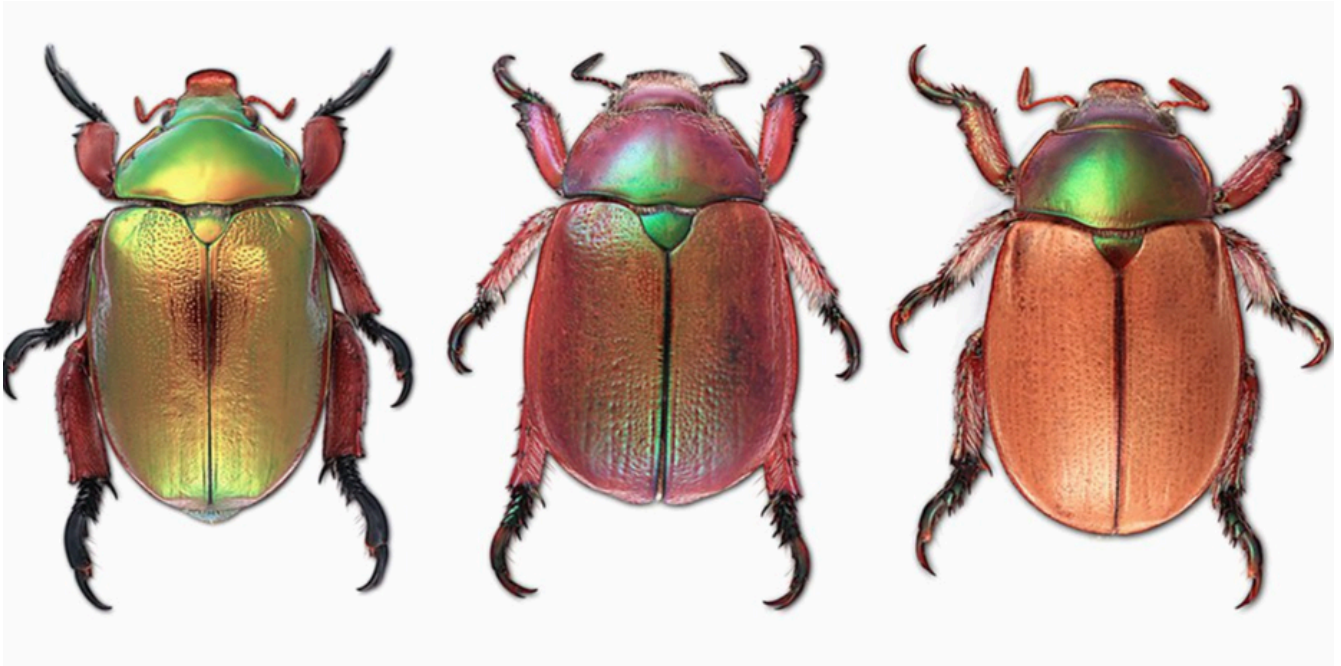


Image: Abram Powell, courtesy of The Australian Museum

A seasonal Critter Corner would be remiss without a big shout out to these little beauties. There are about 36 species of Christmas Beetles (family *Scarabaeidae*) with all but one unique (endemic) to Australia and 21 species found in New South Wales. At least 10 species occur in the Sydney region – more if the Blue Mountains are included. *Anoplognathus viriditarsus* (pictured on the left in the image above) is the largest of the Sydney Christmas beetles.

Habitat

Christmas Beetles are found in forests and woodlands.

Distribution

Christmas Beetles are found in southern and eastern Australia.

They emerge in early summer and seek out mates, sometimes pausing to munch on eucalyptus leaves. Females lay their eggs in the soil. After a few weeks, these eggs hatch into chunky white or cream coloured larvae often known as “curl grubs”.

Larvae live in the soil for 1–2 years until forming a pupa and transforming into their final adult form. They then dig their way out of the ground and take to the air, starting the cycle again.

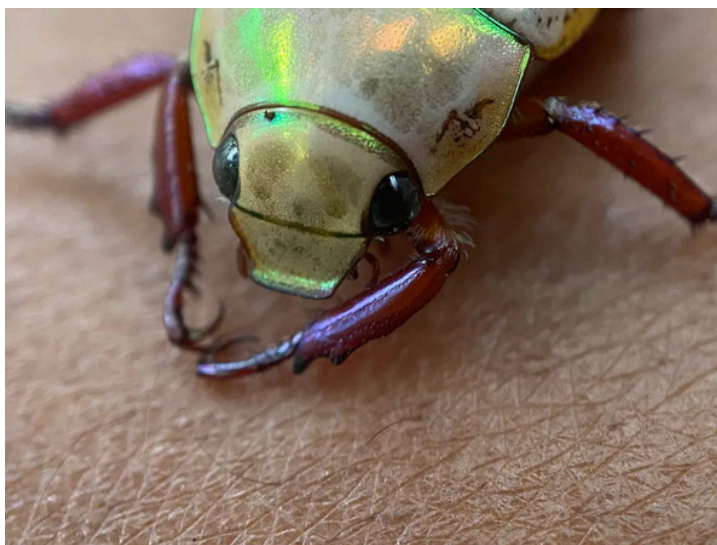
Commonly observed species like the washerwoman (*Anoplognathus porosus*) and *A. olivieri* have classic Christmas beetle colouring, with flecks of iridescence across their tawny brown bodies.

But not all Christmas beetles are iridescent. Some, like the Granny Smith beetle (*A. prasinus*), are a vibrant green, while others look golden (*A. aureus* and *A. parvulus*).

Continued over....

CRITTER CORNER

Christmas beetles Genus *Anoplognathus* Family *Scarabaeidae*



Images (L): by Tanya Latty CSIRO and (R): by Harry Hackett - sadly, this little local was found dead last week, missing its legs

Are Christmas beetles disappearing?

A 2023 CSIRO article by scientists Tanya Latty, Chris Reid, Hauke Koch, Thomas Mesaglio addresses this question - In recent years, public perception seems to suggest these lovely insects may no longer be arriving in high numbers. Are they declining?

Unfortunately, we don't have long term population data for any Christmas beetle species, so we cannot conclusively say if there's been a decline. However, many people (including some of the CSIRO article's authors) remember there being more Christmas beetles in the past. So the CSIRO designed a project to help us determine the health of Christmas beetle populations.

The Christmas Beetle Count is a community science project led by conservation organisation Invertebrates Australia in collaboration with the University of Sydney. You can contribute via this link: <https://invertebratesaustralia.org/christmas-beetles>

To read more about CSIRO's work:

<https://www.csiro.au/en/news/all/articles/2023/december/christmas-beetles>

Which Christmas Beetle is that?

In researching Christmas beetles, we came across this super helpful app, developed by the Australian Museum, to help people identify the beetles and understand more about them. With 35 species, there's a lot of diversity. Did you know that not all Christmas beetles are iridescent?

Download here for free: <https://australian.museum/visit/mobile-apps/>

Information sourced from The Australian Museum, CSIRO and article originally published in The Conversation 2023



PLANT PROFILE

Commersonia bartramia - Brown Kurrajong



The Christmas tree of the Northern Rivers!

Commersonia bartramia, commonly known as brown kurrajong, is a species of flowering plant in the family Malvaceae and is native to Southeast Asia, the Northern Territory, Queensland and New South Wales. It is a tree or shrub with heart-shaped to egg-shaped leaves much paler on the lower surface, and sometimes with fine, irregular teeth on the edges. An attractive spreading tree with horizontal branches giving a layered effect. (Atlas of Living Australia)

It's known as the Christmas tree of the Northern Rivers due to its beautiful tiered habit and seasonal showy white flower display most visible December through January.

It is a fast-growing pioneer or early successional tree common in lowland rainforest regrowth, swamp forest margins and disturbed areas at low elevation. Most of the 25 species of *Commersonia* are endemic to Australia and are found in sclerophyll vegetation, not rainforest. (A. Benwell, Plants of Subtropical Eastern Australia)

Distribution NSW: north from the Bellinger River.
Across the border in QLD, it occurs all the way up to Cape York.



SNIPPETS

Switching off from work can be difficult but taking a proper break is good for your health

Article Ty Ferguson, Carol Maher & Rachel Curtis, published by The Conversation, December 23, 2024
It's never been easier to stay connected to work. Even when we're on leave, our phones and laptops keep us tethered. Many of us promise ourselves we won't check emails during our break. But we do.

Full story here: <https://theconversation.com/switching-off-from-work-can-be-difficult-but-taking-a-proper-break-is-good-for-your-health-244744>

.....

Endure – or peter out? Here's what Northern Rivers organisers and Stop Adani can teach us about building climate groups

Article Amanda Tattersall, published by The Conversation, September 20, 2024

Over the last decade, several groups in Australia have successfully mobilised against fossil fuel interests. But which ones have gone the distance?

The urgent global threat of climate change might suggest groups running large-scale campaigns are the ones likely achieve lasting change. But my research suggests groups focused on local efforts are often more successful. Full story here:

<https://theconversation.com/endure-or-peter-out-heres-what-northern-rivers-organisers-and-stop-adani-can-teach-us-about-building-climate-groups-235774>

.....

'Bad deal for taxpayers': huge losses from NSW forest logging, reports reveal

Article by Petra Stock, published by The Guardian 18 December 2024

Two reports revealing the extent of financial losses from native forest logging in New South Wales raise questions about the economic viability of the industry.

The state government's forestry corporation "consistently made a loss" by paying contractors more for harvesting and haulage than it earned from delivery of timber to sawmills, a NSW Independent Pricing and Review Tribunal (Ipart) report found. Full story here:

<https://www.theguardian.com/environment/2024/dec/18/bad-deal-for-taxpayers-huge-losses-from-nsw-forest-logging-reports-reveal>

.....

CSIRO, Oxitec to tackle disease-spreading mosquitoes threatening mainland Australia

CSIRO News Release 10 December 2024

A new venture, Oxitec Australia, is taking on two of the deadliest virus-carrying mosquitos in the Pacific region – *Aedes aegypti* and *Aedes albopictus* – to fight the spread of diseases like dengue, Zika, and yellow fever, which claims hundreds of thousands of lives globally each year.

Launched today, Oxitec Australia is a collaboration between CSIRO, Australia's national science agency, and UK-based Oxitec Ltd, the leading developer of biological solutions to control pests.

<https://www.csiro.au/en/news/All/News/2024/December/CSIRO-Oxitec-to-tackle-disease-spreading-mosquitoes-threatening-mainland-Australia>

.....

SUMMER TIME WIND DOWN

A few options for your summer reading / listening / viewing list, if you haven't come across them already

READ:

When you wish upon a star, is it already dead? An astronomer crunches the numbers

- The Conversation

<https://theconversation.com/when-you-wish-upon-a-star>

Nature's 10: The people who helped shape science in 2024 - Nature Journal

<https://www.nature.com/immersive/d41586-024-03890-5/index.html>

From the ocean's depths to the public eye: Bikpela's amazing journey - CSIRO

<https://www.csiro.au/en/news/All/Articles/2024/December/Bikpela-hydrothermal-spire>

LISTEN:

Nature Track - Dr Ann Jones

<https://www.abc.net.au/listen/programs/nature-track>

WATCH:

The Platypus Guardian - ABC iView

<https://iview.abc.net.au/show/platypus-guardian>

The Forest - ABC iView

<https://iview.abc.net.au/show/forest/video/ZW4137A001S00>

Drone-mounted LiDAR reveals the true extent of two lost-cities in the mountains of Uzbekistan - Nature Journal

<https://www.nature.com/articles/d41586-024-03464-5>



EVENTS & WORKSHOPS

We're a little weary and in need of a break so we've taken our finger off the pulse. Looking forward to some time out, unwinding, finding some peace and quiet in our beautiful Northern Rivers landscape, Bundjalung Country.

Hope you can do the same, see you in 2025.



EDUCATION

TAFE Statement in Bushland Management 2025



This compact course is a great starting point to a career in ecosystems management. Identify weeds from native species, plan bush regeneration and use safe work practices.

2-week course is being offered at Byron Campus for \$380, March 2025 and June 2025.

Learning outcomes

- Understand ecological principles and biodiversity in bushland ecosystems
- Apply conservation strategies for preserving native flora and fauna
- Use techniques for controlling invasive species and managing pest populations
- Use erosion controls skills and habitat restoration
- Rehabilitate degraded land and understand its cultural significance to Indigenous communities
- Understand work health and safety (WHS) in bushland regeneration

Course outcomes

- Skills to recognise weeds to native plants and pests from native animals
- Experience participating in a site safety inspection
- The knowledge to support the implementation of bushland restoration works
- A pathway to further conservation and land management study

<https://www.tafensw.edu.au/course-areas/environment-and-sustainability/courses/tafe-statement-in-bushland-management--800-001303>

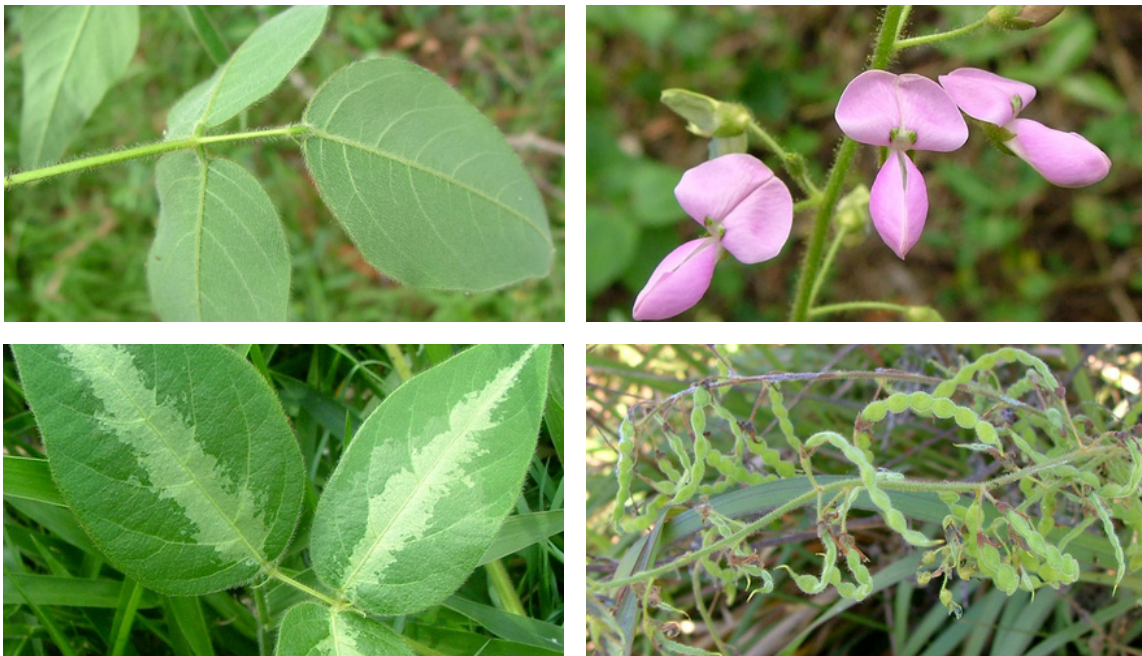
WEED OF THE MONTH

Desmodium uncinatum Silverleaf desmodium

Source: Brisbane City Council Weed Identification Tool

Silverleaf desmodium (*Desmodium uncinatum*) was introduced as a fodder crop and has now become a weed of creekbanks (i.e. riparian areas), roadsides, fencelines, forest margins, disturbed sites, waste areas and plantation crops (e.g. sugarcane). It is regarded as an important environmental weed in south-eastern Queensland, and was recently ranked among the top 100 invasive plants species in the region. It is also regarded as an environmental weed in the New South Wales North Coast region.

Silverleaf desmodium (*Desmodium uncinatum*) spreads into forest margins and along creeks where it trails over shrubs and groundcovers, but it does not climb into trees. It has also been reported to ensnare and kill native wildlife (e.g. frogs, birds, lizards and microbats) that easily become stuck to its stems and fruit.



Identification

Usually a long-lived creeping or scrambling vine with stems up to 1.5 m long. Its stems are densely covered with hooked or curved hairs and readily adhere to skin or clothing. Its alternately arranged leaves are compound with three leaflets and are borne on stalks 2-5.5 cm long. Its leaflets (2-10 cm long) have pointed tips and their upper surfaces have a distinct silvery stripe. Its pea-shaped flowers are arranged in elongated clusters at the tips of the stems or in the upper leaf forks. These pink or purplish flowers (7-10 mm long) usually turn bluish or bluish-green as they age. Its elongated pods (1-3 cm long) are covered in hooked hairs, and readily separate into 3-10 small one-seeded segments.

Similar species: creeping beggarweed *Desmodium incanum* and greenleaf desmodium *Desmodium intortum*, and relatively similar to the native carpon desmodium *Desmodium heterocarpon* and Florida beggarweed *Desmodium tortuosum*.

Control methods: cut stump method; foliar spray.

<https://weeds.brisbane.qld.gov.au/weeds/silverleaf-desmodium>

.....

WORKING BEES

Why not get out and get involved in one of our local groups?

For all Landcare Working Bees please wear protective clothing - long pants, long-sleeved shirt, closed-in shoes, hat, gloves and bring water, sunscreen, and insect repellent. Please always contact the group co-ordinators before attending a working bee as plans do change!

Bangalow Land and Rivercare, Bangalow

WHEN: every Saturday 8:30am

WHERE: find out from

CONTACT: Noelene Plummer bangalowlandcare@gmail.com 0431 20 0638 6687 4470

Friends of Lilli Pilli (Byron Bay)

WHEN: 1st Saturday of the month 3:30pm - 5:00pm

WHERE: At entrance to Lilli Pilli (contact Deb).

CONTACT: Deb Jorgensen deborah.jorgensen60@gmail.com 0434 254 802

Green and Clean Awareness Team, Byron Bay

WHEN: 3rd Sunday of the month 9:00am

WHERE: Meet Main Beach, Byron Bay

CONTACT: Peter Farmakis peter.farmakis@gmail.com 0488 715 565

Heritage Park Landcare, Mullumbimby

WHEN: Saturdays 9:00am – 11:00 am

WHERE: Heritage Park, Mullumbimby

CONTACT: Diana Hughes bromspot@gmail.com

Jinangong Landcare, Ocean Shores

WHEN: 1st Sunday of the month

WHERE: The Tunnel Road, Ocean Shores

CONTACT: Ian Parer ianparer@hotmail.com

Mullum Town Landcare, Mullumbimby

WHEN: Morning of last Sunday of the month

WHERE: find out from John Tann

CONTACT: John Tann johntann99@gmail.com

Ocean Shores Landcare, Ocean Shores

WHEN: each Thursday at 8.30 – 11.00 am (8.00am DST)

WHERE: corner of Yallakool Drive and Warrambool Road, Ocean Shores

CONTACT: David Kemp dnkemp77@gmail.com 0427 650 861

Suffolk Park Dunecare

WHEN: 8.30 - 10.30 every fourth Sunday of the month

WHERE: find out from:

CONTACT: Rebekah O'Flaherty rebekahoflaherty@gmail.com 0428 942 903

Tallowood Ridge Locality Landcare

WHEN: Second Saturday of the month from 3pm (winter), 4pm (summer).

WHERE: Tallowood Ridge Estate, Mullumbimby

CONTACT: Joanne McMurtry jmcmurtry@bigpond.com

Tyagarah Landcare

WHEN: Each Thursday 9:00am – 11:00am

WHERE: 23 Prestons Lane, Tyagarah

CONTACT: Bela Allen bela_allen@yahoo.com 6684 7113

Can't find a group near you? We have many other groups who meet on an ad hoc basis (contact us for more details) or if there isn't an existing group in your neighbourhood or you are interested in

LINKS

- Arakwal <http://arakwal.com.au/>
- Australian Association of Bush Regenerators <http://aabr.org.au>
- Border Rangers Alliance http://www.greasternranges.org.au/border_ranges/overview/overview
- Bangalow Koalas <http://www.bangalowkoalas.com.au/>
- Bangalow River and Landcare <http://www.bangalowlandcare.org.au/>
- Big Scrub Landcare <https://www.bigscrubrainforest.org.au/>
- Brunswick Valley Landcare <http://www.brunswickvalleylandcare.org.au/>
- Byron Bird Buddies <http://www.byronbirdbuddies.com.au/>
- Byron Community College <http://www.byroncollege.org.au/>
- Byron Shire Council <http://www.byron.nsw.gov.au/>
- EnviTE www.envite.org.au
- Environmental Trust <http://www.environment.nsw.gov.au/grants/envtrust.htm>
- Friends of the Koala www.friendsofthekoala.org
- Federal Landcare Inc federalandcare@gmail.com
- Local Land Services www.northcoast.ils.nsw.gov.au
- North Coast Local Land Services <http://northcoast.ils.nsw.gov.au/>
- Border Ranges Richmond Valley Landcare www.brrvl.nsw.gov.au
- Mullumbimby Community Gardens <http://mullumcommunitygarden.wordpress.com/>
- North Coast Nature <http://www.northcoastnature.org.au/>
- Richmond Landcare Inc. <http://www.richmondlandcare.org/>
- Rous County Council (formerly Far North Coast Weeds) <http://rous.nsw.gov.au/>
- Soilcare <http://www.soilcare.org>
- Tweed Landcare Inc. <http://www.tweedlandcare.org.au/>
- Wilson's Creek Huonbrook Landcare <http://www.wilsonscreeklandcare.mullum.com.au/>

For information about Landcare or other natural resource issues in Byron shire please contact



Landcare Coordinator, Alison Ratcliffe 0421 244 640
info@brunswickvalleylandcare.org.au

www.brunswickvalleylandcare.org.au

