



Newsletter

Conserving and restoring from forest to foreshore

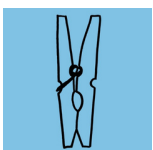


As 2025 closes out, the team at BVL gives appreciation to the tireless volunteers and supporters in our community. The generosity of our many Locality Group vollies, the local businesses such as Dino's IGA, Woollies Mullum, local cafes, and our wonderful donors makes a significant difference to BVL's ability to extend its work in our community.

So, to all of you, a heartfelt thanks. And best wishes.

The BVL Team

BRUNSWICK VALLEY LANDCARE IS A REGISTERED CHARITY ON PEGS AND GRILL'D



Local Pegs app allows businesses to offer discounted prices to locals. You can opt to keep the discount, tip the business, or donate to a local charity



Grill'd Local Matters have chosen Brunswick Valley Landcare to be one of the three local community groups for this month. So if you grab a burger at Grill'd Byron Bay we'd love it if you chose us.



This initiative is made possible by the NSW Landcare Program. A collaboration of Local Land Services and Landcare NSW supported by the NSW Government.

Heritage Park locality group update

by Diana Hughes



This morning we spread beautiful wood chip around a new planting done by the Council Regen team. They thought planting sufficient, we thought mulch throughout added security knowing the potentially dry weather ahead.

The planting is a new edge to the riverside natural vegetation. The newly grassed area is the official off-leash dog exercise area - a vast improvement on the unofficial camping destination it used to be. Close by is the revamped children's playground which was well patronised today with birthday parties.

John, Alex and Merrick were on the barrows, while I could only manage a bucket or two. We volunteered to spread the Council-provided wood chip. An example of working with Council to beautify our town and provide habitat.

We noticed concrete piers along the river edge; there used to be a wharf here served by boat from Brunswick Heads. Close by, the town's swimming pool and diving tower were popular pursuits back in the 1930's. There were even dressing sheds for men and women. The now-huge figs were planted to provide shade for the bathers. How well they've served their purpose. Possibly *Ficus benjamina*, weeping fig, which is found in Asia as well as Australia but planted widely in Queensland parks for shade back in the early days.

The BVL team says top work Heritage Park Landcare, you take such amazing care of this precious town space. It's the perfect spot to enjoy a cool moment over the summer - if you haven't been lately we recommend you take a visit!

.....

BVL NEWS

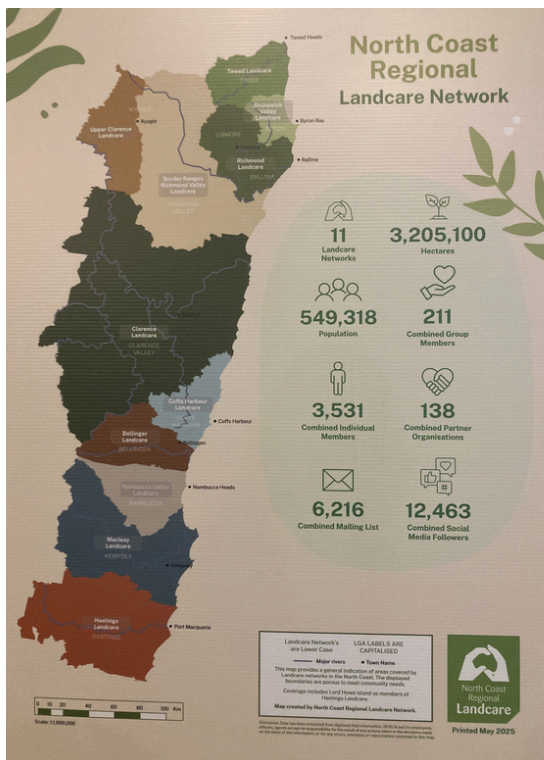
Landcare Australia 2025 Conference content is now online



The team at Landcare Australia have now made the full suite of Conference content and sessions available to view online for free. It was a packed program with 650 delegates attending from across the country. We'd recommend that you bookmark the link so you can take your time over summer and view what piques your interest at your leisure. Some incredibly inspiring speakers and presentations representing the depth and breadth of Landcare. Enjoy.

[2025 National Landcare Australia Conference online](#)

North Coast Regional Landcare Community of Practice Gathering



The North Coast Regional Landcare Network members (of the 11 networks of our region) recently had the chance to gather in Port Macquarie for a Landcare Enabling Program update. It was the perfect opportunity to introduce Valley to the



other Local Landcare Coordinators - all at once. A new toolkit was launched: "Walking Together: Cultural Knowledge & Conversation" (details next page). There were a number of case studies and facilitated panel discussions to learn from - of particular interest was the Nature Based Solutions in Riparian Restoration Case study presented by southern network members, Hastings, Nambucca, Macleay and Clarence Landcare.

Images: Harry Hackett

Walking Together: Cultural Knowledge and Conversation



"Care for Country" by Sarah Tunsted, proud Bundjalung woman of the Morrang Moobar clan from Murwillumbah, and winner of NCRLN's Acquisitive Art Award

The North Coast Regional Landcare Network was funded to deliver the Regional Landcare Aboriginal Partnerships project under the current Landcare Enabling program, led by NCRLN's Aboriginal Landcare Officer, Michael Kennedy.

Through a series of conversations and workshops through June to August 2025, Micheal observed there was and is strong interest and commitment from all networks to engage, collaborate and partner with local Aboriginal organisations and stakeholders and conversely, strong interest from local Aboriginal Elders and Knowledge Holders, organisations and stakeholders.

The Walking Together Toolkit has been developed to support Local Landcare Networks and groups to effectively and confidently engage with First Nations people across the region.

The Toolkit offers brief and limited information covering:

- Introduction to the historical context for First Nations people since colonisation;
- Introduction to First Nations peoples in Australia;
- Cultural safety, Cultural protocols and Language and place names;
- Aboriginal organisations and governance arrangements;
- Current legal situation for Cultural Burning; and,
- Guidance and checklists to support engagement with Aboriginal people, organisations and stakeholders.

To download a copy in pdf format, visit: <https://northcoastlandcare.org.au/resources/>



.....

BVL PROJECTS UPDATE

Caring for Catchments Project hits Milestone #3

We've been busy out in the field over the last few weeks conducting monitoring at our six Caring for Catchments sites for Milestone 3 Reporting. 2025's seasonal extremes have thrown up a few challenges and unexpected results in our riparian restoration activity, which we're documenting in our Monitoring and Evaluation processes. It's been really interesting noting which are the winner species powering at some planting sites. Regen results where there's quality remnant vegetation are proving really strong.

One aspect we've had to investigate more deeply, in the context of post-2022 flooding impacts, is what's one of our most fundamental building blocks in raising successful riparian species? SOIL. What exactly have we lost in the recent years of flooding and what does this mean for our restoration methodologies? We're good at talking soil in agriculture - do we talk about it enough in restoration?

With the pressures of short project terms and tight deadlines for deliverables, there's often not enough time given to site testing and conditioning before anything is planted. Multi-year projects are of such great value towards investment in these ends (time and money). We'll share our learnings from what we've been documenting over the last several years of climate disruption and we look forward to sharing that with you.

In the meantime, here's some images from the field. We've had some fun encounters with the plant & animal residents at our sites. Highlight (but too quick to get image) was when we flushed out a Latham's Snipe at one of the Mullum Creek sites. Could it be the same one sighted at our 2024 Mother's Day planting site in Main Arm earlier this year?



Above: riparian zone regenerating after successful treatment of lantana and cestrum infestation.

Top right: enjoying a sunny spot; Below right: fungi friends



Thinking more on soils, on damaged ecosystems in modified landscapes, and on the power of forests in these times, here's some further viewing (short & long):

[Mycorrhizal Fungi](#)
[The Forest](#)

.....

BVL NEWS

Macquarie University call out for Producer input



YOUR VOICE MATTERS

Help shape the future of pest management. Choose between a \$50 voucher or a \$1000 prize draw for completing an in-person survey. Or choose to enter a \$1000 prize draw by taking an online or over the phone survey.



Are you a grower in the Northern Rivers?

Do you:



**Use
pesticides?**



**Wonder about
alternatives?**



**Want to improve
your integrated pest
management?**

We want to hear from you!

Take part in a survey and share your opinions to help build better pest management solutions for your region.

More information is available on the back of this flyer.

Continued over.....

BVL NEWS



What's the Pest READI Survey about?

The Pest READI project is studying how growers make pest control decisions - including where advice comes from, what influences choices, and how Integrated Pest Management (IPM) is being used or considered.

This survey builds on other work conducted under the Pest READI project. More about the project:

[https:// research.csiro.au/pestreadi/](https://research.csiro.au/pestreadi/)

Why take part?



By joining the study and providing your opinions you'll:

- Contribute to grower-led solutions for sustainable pest control
- Help improve advisory services, outreach, and policy for growers like you.

How to take part?

Call or SMS 0461 354 734 to register for an **in-person survey** and you can receive a \$50 voucher or choose to enter a \$1000 prize draw.

Call or text 0461 354 734 to complete the survey **over the phone** and go into the draw to win \$1,000.

Scan the QR code to take the **survey online** and choose to enter a \$1000 prize draw.



Want to know more?

Email: kirt.hainzer@mq.edu.au

Phone: 0461354 734

Pest READI™: 'Regionally Enabled Agroecological Decision Intelligence' is funded through Hort Innovation Frontiers with co-investment from CSIRO's 'Catalysing Australia's Biosecurity' initiative, Macquarie University, NSW Department of Primary Industries and Regional Development, Queensland Department of Primary Industries, GrowCom, Jagun Alliance Aboriginal Corporation and contributions from the Australian Government.



.....

BVL NEWS

Regenerative Agriculture

2025 World Soil Day Competition - WIN 1 of 3 \$5,000 prize package to help solve your soil-based problem – entries close 4th December

Thanks to Mark Arnold for update from the Byron Farmer's Network.

SQNNNSW Innovation Hub are giving land managers the opportunity to showcase land-management or on-farm works and gain valuable soil health insights to help overcome any soil-related issues.

The competition invites entrants to highlight the importance of soil health in managing drought and climatic extremes, by either describing a soil related problem that is limiting potential or showcasing one or more practices being implemented to improve soil health.

The competition is open to Primary producers, Landcare groups, First Nations groups, High School agricultural classes and others managing agricultural or grazing land in the southern half of Queensland or the northern half of NSW.

Entries close: 4th December 2025

More Info: [World Soil Day Competition](#) | [UniSQ](#).

Email enquiries: sqnnswhub@unisq.edu.au



.....

BVL NEWS

Pollinators at scale



In recent news from our friends at Soilcare Inc, a Spanish company, Polyfly, has introduced the large-scale rearing of hoverflies (*Syrphidae*) as effective and versatile pollinators for agriculture.

"The effectiveness of these insects as pollinators has been known for many years. In fact, as early as the 1970s in Japan, they were proposed as pollinators for crops, much like bees and bumblebees today," explains Marc Vaez-Olivera, co-founder of Polyfly.

However, until now, no one had managed to rear them at commercial scale. Polyfly has filled that gap, after more than eight years of R&D supported by organizations such as CDTI and ENISA. The company operated a pilot plant of 800 m² for over five years before securing institutional investment, including from the EIC – European Innovation Council.

This raises interesting question - the above example is from Europe - what do we know about species of Hover fly in Australia? We did some reading. It's thought that there are 160 identified species of hover fly that occur across Australia.

You can identify Hover flies by their characteristic flight pattern - hovering in one spot, moving suddenly forwards or sideways, then hovering again. Some people mistake hover flies for wasps or bees because of their black and yellow-striped abdomens and also because they can occur in huge numbers. However, they are actually members of a fly family that have evolved as wasp and bee mimics. During hot weather, they may appear in large numbers as they linger in gardens to feed at flowers and seek shade. However, they are more abundant in winter, making them important winter pollinators.

So Get to know your hover flies! More reading available at:

<https://australian.museum/learn/animals/insects/hover-flies/>

https://www.brisbaneinsects.com/brisbane_hoverflies/index.html

.....

BVL NEWS

Byron Bird Buddies November - December program

Byron Bird Buddies (BBB) - www.byronbirdbuddies.com.au

Program Update November & December 2025

Byron Bird Buddies – bird monitoring, education & conservation projects in Byron Shire. BBB is a Special Interest Group of Brunswick Valley Landcare (BVL).

Membership of BBB is by joining BVL <https://brunswickvalleylandcare.org.au/get-involved/become-a-member/>

General Info - This program may change, but will be up-dated as much as possible. If you wish to attend any outing, please phone or email the contact provided. If it's raining the event may also be cancelled. The Calendar also includes outing dates for other groups in the Northern Rivers (if known), any questions please contact the number provided.

What To Bring - Always wear covered shoes and bring water, hat, sunscreen and insect repellent and something to eat for morning or afternoon tea and lunch if it's over the lunch period.

Contact - for all BBB Activities - byronbirdbuddy@gmail.com Mobile 0428864378.

All are welcome.

Wet Weather Policy – Take a risk or phone 0428864378

Date & Time	Where	Why
November & December 2025		
BBB – continue monitoring of Pied Oystercatcher, Beach Stone-curlew & Bush Stone-curlew breeding sites and record site visit on BBB online Excel spreadsheet. – Contact as above. Contact byronbirdbuddy@gmail.com		
Sunday 23rd – 11am -3pm	Mullumbimby Showground - BVL AGM & Xmas Party. Presentation of BBB annual Report	
Wednesday 26th 8am – start	To be advised or email contact - Bruce McNaughton bruzamcnaughton@gmail.com	RBB - survey for BirdLife Atlas
December		
Tuesday 2nd 15:00 start	Byron Wetlands: to register with Vicki davvix1@gmail.com	BBB – Evening survey – for BSC reporting
Wednesday 3rd 19.00 (7pm) – at dusk	Skidders Shoot – Private Property – Must Register for Address - Contact Vicki - davvix1@gmail.com	BBB – National Australasian Bittern Count
Thursday 4th Time?	Byron Library – Art Exhibition and	Wallum Group – Panel
Wednesday 10th Time ???	Xmas Party at Seabird Rescue – Advise to register - bruzamcnaughton@gmail.com	RBB -
Thursday 11th 8am start	Old New Brighton Rd – Advised to register byronbirdbuddy@gmail.com	BBB – for APP (NPWS – Aboriginal Parks Partnership Program)
Sunday 14th 08.00	Byron Wetlands – Survey of Wetlands first – BLNR & BBB Combined Christmas Party – bring a plate to share. Contact – Bruce Penman penmanbruce@gmail.com	BLNR & BBB
Merry Xmas Everyone and Wishing you all a fantastic 2026 BBB First outing in 2026 – will be a snipe count in January date TBA		

.....

Byron Shire Council News

Waterlily Park weed removal and drainage work

Media release published 12 November

There will be major work done on the small lake at Waterlily Park at Ocean Shores in mid-November with Council to remove the weed that is covering the lake and clearing nearby drains.

An aquatic harvester will be operating in the lake for around one week, removing the invasive Salvina weed which will be stored on the bank to dry out before it is taken to the Byron Resource Recovery Centre and turned into compost.

In the past Council has successfully used the Salvinia Weevil to control the weed, but additional measures need to be taken this year because of the presence of two other invasive weeds, Parrot's Feather (*Myriophyllum aquaticum*) and Creeping Water-Primrose (*Ludwigia peploides*).

The aquatic harvester will remove the bulk of the weeds, but herbicide spraying will be necessary around the edges where the machine can't access.

"Without this treatment the weeds could quickly re-establish," Malcolm Robertson, Manager Open Spaces and Facilities, said.

"The specialised aquatic herbicide, Clipper, will be applied where needed, by licenced contractors and signage will be placed in affected areas to warn the public of the herbicide in use.

"All three weeds multiply quickly and have the potential to create thick mats on the surface of waterways, smothering native plants and disrupting the environment for aquatic species," Mr Robertson said.

These weeds have been widely marketed in the past as aquarium plants, and people living in the catchment of the lake are asked to check what may be growing in backyard fishponds.

"We have had these weeds under control in the past and they seem to reoccur following heavy rains, suggesting they could be transported via storm water drains. "The Parrots Feather can also be introduced on the feathers or wings of visiting aquatic birds," Mr Robertson said.

Once the weed removal and treatment processes are finished, work will start on removing silt from drainage pipe outlets in the lake. "Over the years there has been a significant build-up of sediment from the surrounding catchment which has reduced the depth of the lake and altered flow patterns," Ryan van Doorn, Acting Infrastructure Services Planning Coordinator, said.

"We will have a long-arm excavator working in the lake and the silt and other material will be put on the bank before being removed," Mr van Doorn said. When treatments are complete Council is hoping to work with the Waterlily Park Landcare group to assist in monitoring and manually removing fresh weed outbreaks before they gain momentum.

.....

CRITTER CORNER!

Spotted-tailed Quoll *Dasyurus maculatus*



Image: John Turbill NSW Department of Environment

We were lucky enough to attend a recent workshop hosted by Tweed Landcare under their NSW Environmental Trust Project "Filling the Biodiversity Gaps". Guest Presenter was quoll expert Associate Prof. Guy Ballard from the University of New England. The Tweed Landcare team, together with local Ecologist Georgia Bayer, are trying to find evidence of the Spotted-tailed Quoll in their project area. Fantastic presentation, heaps of wonderful species information. These guys are total characters! Their conservation status in NSW is Vulnerable, at Commonwealth level it's Endangered.

So that got us thinking, does the Byron Shire still have any Quolls in our midst? NSW Bionet does have sightings recorded in Byron LGA dating back to the 80's with the most recent recorded in a 2019-2021 Community Wildlife Survey. Have you ever seen a Spotted-tailed Quoll in these parts (or in the Tweed?).

Here some species ID to help you zone in.

Description: The Spotted-tailed Quoll is about the size of a domestic cat, from which it differs most obviously in its shorter legs and pointed face. The average weight of an adult male is about 3500 grams and an adult female about 2000 grams. It has rich-rust to dark-brown fur above, with irregular white spots on the back and tail, and a pale belly. The spotted tail distinguishes it from all other Australian mammals, including other quoll species. However, the spots may be indistinct on juvenile animals.

continued over.....

CRITTER CORNER

Spotted-tailed Quoll *Dasyurus maculatus*

Distribution

The range of the Spotted-tailed Quoll has contracted considerably since European settlement. It is now found in eastern NSW, eastern Victoria, south-east and north-eastern Queensland, and Tasmania. Only in Tasmania is it still considered relatively common.

Habitat and ecology

- Recorded across a range of habitat types, including rainforest, open forest, woodland, coastal heath and inland riparian forest, from the sub-alpine zone to the coastline.
- Quolls use hollow-bearing trees, fallen logs, other animal burrows, small caves and rock outcrops as den sites.
- Mostly nocturnal, although will hunt during the day; spend most of the time on the ground, although also an excellent climber and will hunt possums and gliders in tree hollows and prey on roosting birds.
- Use communal 'latrine sites', often on flat rocks among boulder fields, rocky cliff-faces or along rocky stream beds or banks. Such sites may be visited by multiple individuals and can be recognised by the accumulation of the sometimes characteristic 'twisty-shaped' faeces deposited by animals.
- A generalist predator with a preference for medium-sized (500g-5kg) mammals. Consumes a variety of prey, including gliders, possums, small wallabies, rats, birds, bandicoots, rabbits, reptiles and insects. Also eats carrion and takes domestic fowl.
- Females occupy home ranges of 200-500 hectares, while males occupy very large home ranges from 500 to over 4000 hectares. Are known to traverse their home ranges along densely vegetated creeklines.
- Average litter size is five; both sexes mature at about one year of age. Life expectancy in the wild is about 3-4 years.

Threats

- Loss, fragmentation and degradation of habitat.
- Competition with introduced predators such as cats and foxes.
- Deliberate poisoning, shooting and trapping, primarily in response to chicken predation.
- Roadkill
- Poisoning from eating cane toads in the wild

(although according to Guy Ballard current research underway is to collect important data that will quantify the impacts of foxes, cane toads, even dingoes on Spotted-tailed quolls).

What can you do to help?

1. Retain and protect large, forested areas with hollow logs and rocky outcrops, particularly areas with thick understorey or dense vegetation along drainage lines (= *happy quoll habitat!!*)
2. If you are concerned about predator attacks on poultry, consult with OEH/NPWS rather than taking direct action
3. Be on the look out for Spotted Tailed Quolls and report any sightings.

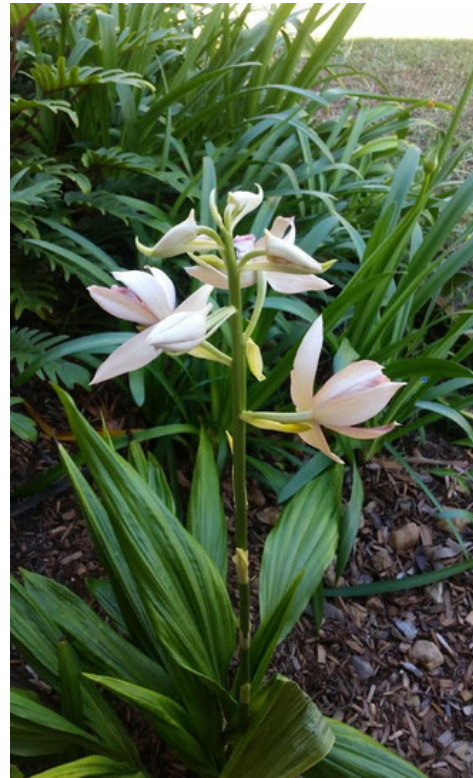
Information sourced from NSW Saving our Species profile:
<https://threatenedspecies.bionet.nsw.gov.au/profile?id=10207>

.....

PLANT PROFILE

Phaius australis Southern Swamp orchid

(Endangered ssp)



Phaius is a small genus of about 20 species of evergreen terrestrial orchids, three of which occur in Australia. Until relatively recently, *Phaius australis* was classified as *P. tancarvilleae* but plants formerly ascribed to that species have been reclassified as *P. australis* in the Australian Plant Census. The other Australian species, *P. bernaysii* and *P. amboinensis* were also previously included in *P. tancarvilleae* (which is now considered to be a related species found in parts of Asia).

Description

P. australis is a robust plant with elongated, oval shaped leaves up to about a metre or more long and flowering stems which may reach 2 metres. The flowers are the largest of any Australian orchid. Flowering occurs September - October.

Leaves 4–8 per shoot, 30–70 cm long, 3–10 cm wide; lamina usually oblanceolate, apex acute.

Inflorescences 1 or 2, from the axils of the lower leaves, 70–110 cm long, 5–20-flowered, stiffly erect.

Sepals and lateral petals white on the outside, red-brown with yellow veins on the inside. Sepals 3.5–6 cm long, 0.8–1.0 mm wide, oblong-acuminate. Lateral petals 3.3–4.5 cm long, 0.8–1.3 mm wide.

Labellum lamina 2.8–5.5 mm long, 1.7–4.5 mm wide, red-brown with a yellow keel inside; spur 5–10 mm long. Most flowers usually setting fruit.

Distribution and Ecology:

North Queensland to north-eastern New South Wales.

Grows in *Melaleuca quinquenervia* swamps and in sclerophyll forest, on the coast, at or near sea level; reported north from Lake Cathie, but chiefly north from the Evans Head district.

Information sourced from:

[Plantnet NSW](#)

[Australian Plant Society](#)

.....

SNIPPETS

Britain one of least 'nature-connected' nations in world – with Nepal the most

Article by Patrick Barkham published in Guardian Australia, 1 November 2025

Britain is one of the least "nature connected" nations in the world, according to one of the first ever global studies of how people relate to the natural world.

Britain ranks 55th out of 61 countries in the study of 57,000 people, which looks at how attitudes towards nature are shaped by social, economic, geographical and cultural factors.

The most nature-connected nation is Nepal, followed by Iran, South Africa, Bangladesh and Nigeria, according to the study.

Full story here: <https://www.theguardian.com/environment/2025/nov/01/britain-one-of-least-nature-connected-nations-in-world-with-nepal-the-most>

Could species-specific fish 'hotels' help save Australia's freshwater populations? This spring could hold the answer

Article by James Tugwell published in ABC News online 27 October, 2025

This spring offers a critical window to see if man-made "bungalows" installed in rivers throughout the ACT can help a struggling fish species. If they work — as some ecologists are convinced they will — the structures might just save an iconic and vulnerable species.

And that could provide a path forward to restoring other battling Australian freshwater fish populations.

Full story here: [ABC Environment](#)

Australian tropical rainforest trees switch in world first from carbon sink to emissions source

Article by Petra Stock published in Guardian Australia October 16, 2025

Australian tropical rainforest trees have become the first in the world to switch from being a carbon sink to an emissions source due to increasingly extreme temperatures and drier conditions. The change, which applies to the trees' trunks and branches but not the roots system, began about 25 years ago, according to new research published in Nature.

Full story here: <https://www.theguardian.com/environment/2025/oct/16/australian-tropical-rainforest-trees-switch-carbon-sink-emissions-source>

Australia's algal bloom catastrophe has left more than 87,000 animals dead. What will happen this summer?

Article by Jochen Kaempf published in The Conversation November 20, 2025

An underwater bloom of toxic algae has wreaked havoc off the coast of South Australia since mid-March 2025. After eight months, this harmful algal bloom is the longest and one of the most environmentally devastating events ever recorded in Australian waters. There is still no end in sight for this environmental disaster. It's impossible to know exactly what might happen to this vast toxic bloom this summer, as the ocean heats up.

Full story here: <https://theconversation.com/australias-algal-bloom-catastrophe-has-left-more-than-87-000-animals-dead-what-will-happen-this-summer-269609>

GRANTS



Seed Giving Circle Small Grant round

The first grant round is now open, applications close 2 December for grants of up to \$5,000 for local initiatives

The Seed Giving Circle exists to fund bold, community-rooted projects that are making a real impact in our region. Whether it's shifting narratives, sparking collective action, regenerating ecosystems, or reimagining systems, if your work contributes to climate and environmental outcomes in the Northern Rivers, we want to hear from you.

In this grant round, The Seed Giving Circle are offering small grants of up to \$5,000. We also will provide capacity development, mentorship and support as needed, to those applicants who receive the grants.

We welcome anyone with a project that benefits the environment, promotes sustainability, or supports climate action in the Northern Rivers to apply for funding — or help spread the word by sharing this opportunity with your networks.

The [Seed Giving Circle](#) is an initiative of Seed Northern Rivers, bringing together locals who pool small weekly contributions to fund grassroots environmental solutions.

We encourage our network to [join here and help grow the circle](#).

Grant Round Timeline

- Applications open: 7 November
- Applications close: 2 December
- Shortlisting: Early December (by Giving Circle grant committee)
- Voting on finalists: December–January (by Giving Circle members)
- Grantees announced: Early February

.....

GRANTS

Aboriginal Affairs NSW Cultural Grants Program



The AANSW Cultural Grants Program:

- Supports Aboriginal communities to strengthen, protect and maintain traditional and contemporary expressions of Aboriginal culture
- Supports Aboriginal cultural events and activities
- Contributes to Aboriginal community wellbeing and healing through Aboriginal culture and community connection
- Supports sharing of Aboriginal cultural knowledge and skills between generations.

Key Information

Grant amount: From \$1,000 to \$20,000

Application opened: 10 November 2025

Application closes: 31 March 2026, 5:00 pm

The project should be started by 23 January 2026 and the project must be completed by 31 December 2026.

For all details relating to Eligibility, Outcomes and what costs can be applied for, visit:

<https://www.nsw.gov.au/grants-and-funding/aboriginal-affairs-nsw-cultural-grants-program#toc-key-information>



.....

EVENTS & WORKSHOPS

Come find us at Mullum's Christmas Sale Trail



BVL is participating in this year's Christmas Sale Trail on Saturday 29 November, why not come on down to say hello and grab some easy gift ideas to keep things local. We'll be set up at the Community College from 2pm - 7pm.

We'll have both Annual and Life BVL memberships available that come with their own specially designed cards - the perfect gift for that someone in your life with a Landcare heart.

- \$20 Individual Annual membership
- \$100 Individual Life membership
- \$50 Organisation Annual membership
- \$200 Organisation Life membership

We'll also have some great publications available to purchase, like Big Scrub Landcare's "Subtropical Rainforest Restoration Manual" and "Plants of the Forest Floor: a guide to small native plants of subtropical Eastern Australia" by Watsford, Elliott, Price & Weber.

Plus our other fabulous range of brochures and resources, always available for a gold coin donation. See you there.

.....

EVENTS & WORKSHOPS

FREE EVENT!



LANDCARE



SEED COLLECTION SAFARI

Join Tweed Landcare and Michelle Chapman for an engaging and informative Seed Collecting Safari Bus Trip. This exciting event is your chance to actively contribute to the North Coast Regional Seedbank Project, helping us create a vital, genetically diverse native seedbank for the entire NSW North Coast region.



Michelle Chapman is a tree lover and seed collector for Firewheel Rainforest Nursery based in NNSW, and the founder of SEEDTREE MAPS, a tree identification and mapping service that helps people to connect with nature, collect seeds, and grow their own trees. She co-authored *Australian Rainforest Seeds: A guide to collecting, processing and propagation* (CSIRO Publishing, 2020) to support species diversity in rainforest nurseries, ecological restoration projects and backyards. Michelle also facilitates seed collecting and processing workshops, and mentors Landcare groups, on behalf of the North Coast Regional Seedbank.



Wednesday 3 Dec 2025



09:00 AM – 4:30 PM



Meeting point confirmed upon registration

Supported by



To book your place visit:

<https://www.trybooking.com/events/landing/1502367>

.....

EVENTS & WORKSHOPS



Local Threatened Flora and Fauna

What can you do to help ensure their survival?

Panel speakers

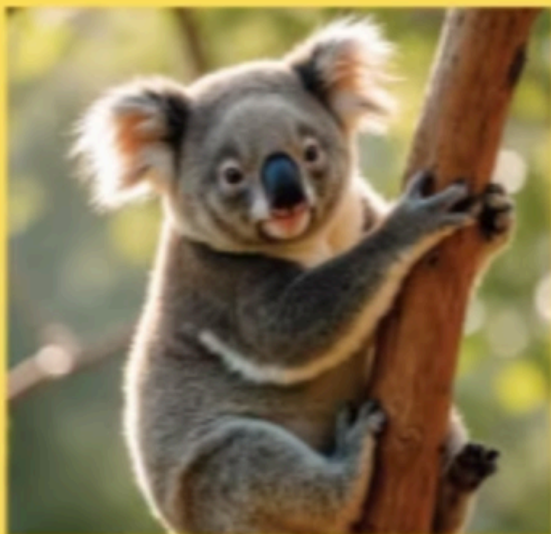
Dale Viola - Friends of the Koala

Jan Olley - Byron Bird Buddies

Jan Barham - Former Mayor of Byron Council

Josh Latinovic - Native aquatic species specialist

Luciana Bowen - President Save Wallum



**Byron Bay Library
4 December 3-5 pm
Refreshments follow**

Byron Bay Library, Middleton St &, Lawson St, Byron Bay NSW 2481, Australia

To register, visit: <https://rtrl.nsw.gov.au>

.....

EVENTS & WORKSHOPS

Local Land Services



Property weed management workshop

North Coast Local Land Services is running a pilot workshop aimed at assisting landholders to manage weeds on their property.

Participants will learn practical strategies and methods for weed management, including:

- Using a provided property map to identify and prioritise weed management areas.
- Calibrating boom and hand sprayers.
- Identifying common bushland and pasture weeds and using available resources to support weed management.

Morning tea will be served from 9:00 am, and a light lunch will be provided.

Date, time and locations

Both sessions run from 9:30 am – 2:30 pm

24 November 2025: Wollongbar
DPI Research Station.
1243 Bruxner Hwy, Wollongbar 2477.

3 December 2025: Grafton
DPI Research Station.
16 Experiment Road, Trenayr 2460.

RSVP

Register online or scan the QR code.



Contact

Brendan O'Brien, Team Leader
Operations Sustainable Agriculture
Brendan.o'brien@lls.nsw.gov.au
0400 685 400



To register, visit:

<https://www.nsw.gov.au/departments-and-agencies/local-land-services/events>

.....

EVENTS & WORKSHOPS



SoilCare
Inc.



Join us to celebrate World Soil Day



With Dan Falkenberg (Viticulturist for Eden Hall Wines)

Dan will share insights on soil health, farm resilience, biodiversity, and how working with nature yields positive results. He will provide transition tips to regenerative agriculture and nature-based strategies from a grower's perspective that any agricultural operation can implement.

Friday 5 December 2025

5.00–8.30 pm at The Farm, Byron Bay

Bookings required by 27 Nov at
www.humanitix.com.au

\$45.00 (GST incl.) for SoilCare members

\$50.00 (GST incl.) for non members

Ticket includes:

The Farm beef burger & salads,
Eden Hall 4x 30mL wine tastings,
1x 150mL wine & 1x Stone & Wood beer.

More information at

www.soilcare.org or info@soilcare.org



BOOK NOW!



BYRON
SHIRE
COUNCIL



BOOKINGS [HERE](http://www.humanitix.com.au)

WEED OF THE MONTH

We're seeing it absolutely everywhere at the moment - time to revisit the Top-6 Post Flood weed Fact Sheet series produced in 2024, starting with GDF

GIANT DEVILS FIG

Solanum chrysotrichum



Description

Tall fast growing prickly shrub 3-4 m high. It has prickly stems and leaves, which are very hairy with stellate hairs (star-shaped) when young. Leaves broadly ovate, 7-13 deep lobes, upper leaf darker than underside, more densely hairy below. Flowering parts branched, flowers white, deeply incised. Berry round 10-15 mm diameter, yellow or orange-yellow with lots of pale yellow-light brown seeds.

Flowering time

Autumn to spring

How is it spread

Giant devil's fig is spread by seed. Birds, flying foxes and other animals eat the fruit and spread the seed. Seeds spread by water and contaminated soil.

Impacts

Rapidly invades disturbed sites especially grazing land, forming dense thickets that outcompete native vegetation.

Habitat

Creek banks and disturbed sites.

Origin

Central America. Introduced to the Far north Coast of NSW in around 1980.

Similar species



Devil's fig *Solanum torvum* which has smaller leaves and flowers. Hairs on new growth are whitish or yellowish rather than red.



Tropical soda apple *Solanum viarum* which does not grow as tall and has larger fruit that are mottled when immature. The flowers are in clusters of up to 6 rather than up to 50 and the prickles are usually longer (12 mm).

updated June 2024

Continued over.....

WEED OF THE MONTH



GIANT DEVILS FIG

Control Methods

PHYSICAL REMOVAL

Seedlings and small plants can be dug out with a mattock. Larger plants can be cut down and all the roots dug up, leave roots off the ground. This plant has large prickles so extra sturdy gloves and long sleeves/pants are needed.

CHEMICAL CONTROL

Spot spray actively growing plants, ensure all of the foliage is covered. See permit for further critical comments. Spraying will not kill the seeds in the fruit so it is important to collect the fruit and dispose of it.

Cut, scrape & paint stump or stem inject. This plant is prone to coppicing therefore stem injection may be more effective on mature plants.

Best Season

Prior to fruiting. Spray actively growing plants.



Herbicide

WARNING - ALWAYS READ THE LABEL

Users of agricultural or veterinary chemical products must always read the label and any permit, before using the product, and strictly comply with the directions on the label and the conditions of any permit. Users are not absolved from compliance with the directions on the label or the conditions of the permit by reason of any statement made or not made in this information. To view permits or product labels go to the Australian Pesticides and Veterinary Medicines Authority website www.apvma.gov.au. See [Using herbicides](#) for more information.

PERMIT [12942](#) Expires 30/08/2025

Biosecurity Duty

Regional priority weed objective:

Containment

Byron Shire is in the core infestation zone. Land managers should mitigate spread of the plant from their land. Land managers should reduce the impact of the plant on assets of high economic, environmental and/or social value.

The content provided here is for information purposes only and is taken from the Biosecurity Act 2015 and its subordinate legislation, and the Regional Strategic Weed Management Plans (published by each Local Land Services region in NSW). It describes the state and regional priorities for weeds in New South Wales, Australia.

More information

<https://weeds.dpi.nsw.gov.auhttps://weeds.dpi.nsw.gov.au/Weeds/GiantDevilsFig>

updated June 2024



This opportunity is supported by Byron Shire Council and jointly funded by the Australian and NSW Governments under the Disaster Recovery Funding arrangements.

You can revisit the Post Flood Fact Sheet series on BVL's website Resources page

.....

Landcare working bees

For all Landcare Working Bees please wear protective clothing - long pants, long-sleeved shirt, closed-in shoes, hat, gloves & bring water, sunscreen, & insect repellent.

Please always contact the group coordinators before attending a working bee as plans do change!

JOIN US



Bangalow Land and Rivercare, Bangalow

WHEN: every Saturday 8:30am

CONTACT: Noelene Plummer bangalowlandcare@gmail.com 0431 200 638

Green and Clean Awareness Team, Main Beach Byron Bay

WHEN: 3rd Sunday of the month 9:00am

CONTACT: Peter Farmakis peter.farmakis@gmail.com 0488 715 565

Friends of Lilli Pilli, Byron Bay

WHEN: 1st Saturday of the month 3.30 pm

CONTACT: Deb Jorgensen deborah.jorgensen60@gmail.com

Maslem Arboretum, Heritage Park Landcare, Mullumbimby

WHEN: Saturdays 9:00am – 11:00 am

CONTACT: Diana Hughes bromspot@gmail.com

Mullum Town Landcare, Mullumbimby

WHEN: last Sunday morning of the month

CONTACT: John Tann johntann99@gmail.com

Ocean Shores Landcare, Yallakool Reserve and Devines Hill Ocean Shores

WHEN: each Friday at 8.30 – 11.00 am (8.00am DST)

CONTACT: David Kemp dnkemp77@gmail.com 0427 650 861

Suffolk Park Dunecare

WHEN: Fourth Sunday of the month 8:30am – 10:30am

CONTACT: Rebekah O'Flaherty rebekahoflaherty@gmail.com

Tyagarah Landcare, Grays Lane Tyagarah

WHEN: Each Thursday 9:00am – 11:00am

CONTACT: Bela Allen bela.allen@yahoo.com 6684 7113

Waterlilly Park Care Group, Waterlilly Park Ocean Shores

WHEN: Each Wednesday 8:00 am - 10.00 am

CONTACT: Ian Barker barker5057@gmail.com 0403 001 946

SPECIAL INTEREST GROUP

Byron Bird Buddies

WHEN: monthly program of surveys and walks
for more info visit www.byronbirdbuddies.com.au

CONTACT: byronbirdbuddy@gmail.com 0428 864 378

CAN'T FIND A GROUP NEAR YOU?

We have many other groups who meet on an ad hoc basis (contact us for more details) or if there isn't an existing group in your neighbourhood or you are interested in looking after a particular area, BVL can help you to form a locality group under the BVL umbrella.

LINKS

- Arakwal <http://arakwal.com.au/>
- Australian Association of Bush Regenerators <http://aabr.org.au>
- Border Rangers Alliance http://www.greasternranges.org.au/border_ranges/overview/overview
- Bangalow Koalas <http://www.bangalowkoalas.com.au/>
- Bangalow River and Landcare <http://www.bangalowlandcare.org.au/>
- Big Scrub Landcare <https://www.bigscrubrainforest.org.au/>
- Brunswick Valley Landcare <http://www.brunswickvalleylandcare.org.au/>
- Byron Bird Buddies <http://www.byronbirdbuddies.com.au/>
- Byron Community College <http://www.byroncollege.org.au/>
- Byron Shire Council <http://www.byron.nsw.gov.au/>
- EnviTE www.envite.org.au
- Environmental Trust <http://www.environment.nsw.gov.au/grants/envtrust.htm>
- Friends of the Koala www.friendsofthekoala.org
- Federal Landcare Inc federalandcare@gmail.com
- Local Land Services www.northcoast.lis.nsw.gov.au
- North Coast Local Land Services <http://northcoast.lis.nsw.gov.au/>
- Border Ranges Richmond Valley Landcare www.brrvln.org.au
- Mullumbimby Community Gardens <http://mullumcommunitygarden.wordpress.com/>
- North Coast Nature <http://www.northcoastnature.org.au/>
- Richmond Landcare Inc. <http://www.richmondlandcare.org/>
- Rous County Council (formerly Far North Coast Weeds) <http://rous.nsw.gov.au/>
- Soilcare http://www.soilcare.org_
- Tweed Landcare Inc. <http://www.tweedlandcare.org.au/>
- Wilson's Creek Huonbrook Landcare <http://www.wilsonscreeklandcare.mullum.com.au/>

For information about Landcare or other natural resource issues in Byron shire please contact



Landcare Coordinator, Valley Lipcer

www.brunswickvalleylandcare.org.au



0421 244 640



info@brunswickvalleylandcare.org.au

