



Newsletter

Conserving and restoring from forest to foreshore



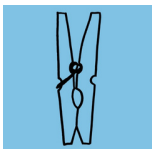
Seasons Greetings everyone

As 2025 closes, we hope that your year in reflection is a positive one and that you get quality time with family and friends.

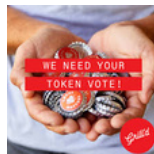
It's been a big Landcare year - looking forward to sharing another great one with you in 2026.

Happy holidays from the BVL Team

BRUNSWICK VALLEY LANDCARE IS A REGISTERED CHARITY ON PEGS AND GRILL'D



Local Pegs app allows businesses to offer discounted prices to locals. You can opt to keep the discount, tip the business, or donate to a local charity



Grill'd Local Matters have chosen Brunswick Valley Landcare to be one of the three local community groups for this month. So if you grab a burger at Grill'd Byron Bay we'd love it if you chose us.



This initiative is made possible by the NSW Landcare Program. A collaboration of Local Land Services and Landcare NSW supported by the NSW Government.

BVL NEWS

BVL AGM and Christmas party



Images: Harry Hackett



Thanks to all who joined us in late November for BVL's Annual General Meeting and Christmas party - you made it such a lovely gathering! Big shout out to President Pete & Julie for feeding us, and to all who brought contributions to the festive lunch table.

It's always inspiring hearing about the great work being done across the Shire by BVL's dedicated locality groups. Congratulations to returning volunteer Committee members Pete, Jenny, Sue, Doug, Rob and Caroline, we're so lucky to have you. To Felicity & Deja, a sad farewell with our huge thanks for your service. And welcome aboard incoming Committee members Stephanie and Jo!



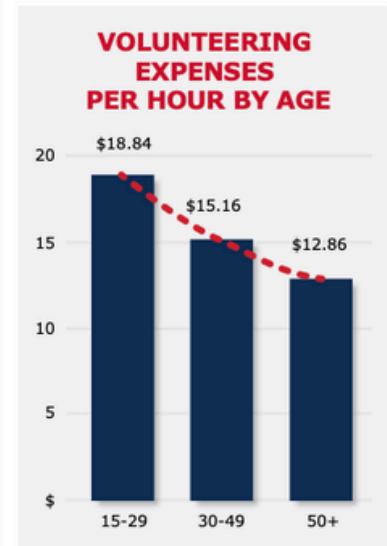
BVL NEWS

NSW State of Volunteering Report

In his AGM President's Report, Peter Ryan referred to some newly released stats in the 2025 NSW State of Volunteering Report and they tell a big story. People power!
You can find a copy of the full report [here](#)

Key Findings

Costs and benefits of volunteering in NSW in 2025

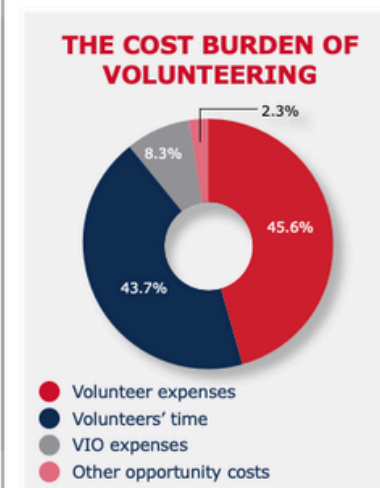


Non-volunteers attributed
58.2%

 **of community well-being**
to the impact of volunteering



The replacement cost of volunteering is
\$45.5 Bn
which is equal to **twice the cost** of the entire NSW public sector



The average volunteer expense per volunteer hour is
\$15.45
Cost to individual volunteers per year
\$4,200
The average volunteer-involving organisation expense per volunteer hour is
\$4.80

Jobs created by volunteering contributed
\$12 Bn
in wages




Volunteer related spending generated
\$31.9 Bn
in NSW

The contribution of volunteering expenditure to Gross State Product in NSW is
2.4%


BVL NEWS

Landcare Australia's Annual Report

Our Impact



218

Projects funded by grants



9,395

Volunteers involved in Landcare Australia funded projects



200,302

Trees and plants established



72,138

Volunteer hours



66,102

Students involved in Junior Landcare projects



671

Nest boxes installed to support biodiversity



226

Projects incorporated Aboriginal and Torres Strait Islander engagement and knowledge



\$2.9million

Funding for environmental projects



2,463

Community events supported



979

Hectares of weed control



74,215

Plants in riparian zones



42,678

Metres of fence installed

48 Landcare Australia Annual Report 2025

49

Reporting, reporting, reporting, stats, stats, stats.....as it happens when wrapping a year, we get to see a lot of figures. For those of you interested in the big picture, what we as Landcarers are all a part of, Landcare Australia recently published their Annual Report with the above summary stats. You can read a copy of the full report [here](#)



Saving Endangered Greater Gliders of The Burnett

Big impact from a small project. The Saving Endangered Greater Gliders of the Burnett project shows how communities, landholders, and scientists can work together to make a real difference for endangered species within agricultural landscapes. The project was proudly supported by WIRES and Evolution Mining, with additional contributions from Goondicum Pastoral Co.

Covering 8,080 hectares across 11 sites located on private grazing properties, it is the largest project of its kind in the region. Habitat enhancements included 69 den sites, combining traditional nesting boxes—built and supplied by the Monto Men's Shed, creating ongoing local capacity—with innovative carved living hollows designed by Habi-Tec Arbicultural Innovations. Monitoring was strengthened through a trial of airborne eDNA technology by the University of Queensland, providing new insights into Greater Glider populations.

Citizen scientists contributed to 81% of all public access Greater Glider observation data. Workshops, educational resources, and landholder engagement raised awareness, built skills, and embedded conservation practices across working landscapes.



With 67% of the Burnett catchment used for agriculture—85% of which is grazing—these lands hold much of the remnant private forests outside protected areas, making private landscapes vital for Greater Glider survival. This project demonstrates how endangered species can thrive alongside productive land use.

While grassroots efforts have achieved remarkable outcomes, dedicated government support remains vital to ensure the long-term survival of this iconic species.

For more information, including the full project report, please visit: www.burnettburnett.com/learning-the-greater-glider
Words by **Melley Neilson**, Ecologist & Conservation Biologist | Burnett Catchment Care Association

Landcare Australia mag

And while we're on Landcare Australia, there's a great article on what community are doing in the Burnett catchment in QLD to save endangered Greater Gliders.

If you're up for some holiday reading, check out the latest Landcare Aust mag [here](#)

BVL NEWS

Tech Meets Nature Showcase content released



If summer viewing is more your thing than summer reading, the Glossy Black Conservancy have just made full recordings available for the Tech Meets Nature Showcase that ran at Griffith University on the Gold Coast for 2025 Science Week.

Held as a hybrid event at Griffith University, the Showcase featured live presentations, demonstrations, and discussions on tools like acoustic monitoring, drones, AI, eDNA, and 4G cameras — showing how technology is reshaping what communities can achieve for nature. For all kinds of species. You can view the range of excellent content [here](#)

Bandicoot Book Corner



And for the younger ones in our lives, Junior Landcare have just launched Bandicoot Book Corner - a resource for educators to find out about inspiring and beautiful books that will encourage children to learn about Australian Nature and the environment.

It's pretty cute. The new Bandicoot Book Corner book of the month is: The Last Hollow by Ben Dessen and Tay Timoney. Head to the bookclub [here](#)

BVL NEWS

Queensland Fruit Fly Biocontrol - can you help this PhD student out?

Biocontrol for Queensland Fruit Fly (Qfly) Citizen Science Opportunity



Parasitoid *Diachasmimorpha kraussii* on a fruit
(credit: Agriculture Victoria)

Parasitoid wasps **attack**
Qfly developing within fruit

If you:

1. Grow stone fruit, pome fruit, fig, citrus and/or mango, and
2. Avoid using broad-spectrum insecticides

You may be able to help with samples for biocontrol research! **No cost to participants**

If interested, read more below and contact Julian Brown
julian.brown1@student.unimelb.edu.au

I'm Julian Brown, a PhD student at the University of Melbourne studying biological control of the Queensland fruit fly (Qfly).

My research is looking into the use of natural enemies to provide environmentally friendly and sustainable pest management of Qfly. The natural enemies I'm interested in are parasitoid wasps, and I'm hoping to sample their natural populations from across Australia.

julian.brown1@student.unimelb.edu.au

.....

NSW Saving our Species news



Nice little 2025 recap with video and all from the team at NSW Saving our Species, working to conserve and protect threatened plant and animal species. Some important reminders too about the holidays - how to protect shorebirds if you're headed to the beach and stay alert for koalas (and all wildlife) on your road trip.

You can see the December and previous editions [here](#)

.....

Expression of Interest to Register Your Land with Landcare Australia for Planting Projects

Each year, Landcare Australia conducts planting projects on a range of properties around Australia on behalf of various partners. Landcare Australia is building a database of land available for future planting projects. By registering your land, you'll be considered for funding and project opportunities as they become available, helping to restore and protect Australia's natural environment.

This opportunity is open to landholders, Traditional Owners, First Nations organisations, primary producers, environmental not-for-profit organisations, and government agencies. Together, we can deliver high-quality, on-ground outcomes that benefit both the environment and agriculture. If your project meets the criteria of one of our funding partners, Landcare Australia will contact you directly.

For more information: <https://landcareaustralia.org.au/what-we-do/register-your-land/>



.....

BVL NEWS

Mullum & District Neighbourhood Centre Food Gardens



Above: Sharon with Paul and Chad, proud of their produce, left and above left.
Images: Harry Hackett

Great to see the progress being made down at the Mullum & District Neighbourhood Centre, with establishment of new permaculture food gardens. Permaculture practitioner and teacher Sharon Gibson is leading the charge, supported by the wonderful MDNC staff, with early stage project design input from BVL. The garden is open to anyone from the community who would like to learn about growing and managing a seasonal permaculture garden.

Sharon leads sessions on Wednesdays each week between 10am - 2pm. All welcome.

Some of the fresh organic produce goes to MDNC's vital community meals program. When we visited there was cucumber, eggplant, tomatoes, strawberries & bok choy pumping. The healthy looking watermelons were sown at the request of local teenagers who have been part of the program. There's a full composting system on site too helping the produce to power. Head down to check it out if you can.

.....

From country to coast, this podcast maps climate action at work

Article published by The Guardian 14 November 2025



Dr Bob Brown remains hopeful about the future of our environment, despite ongoing challenges. Photo: Bee Stephens

Bush Heritage Australia's Big Sky Country podcast returns with a season of evidence-based optimism, pairing First Nations knowledge with science to shine a light on practical solutions to the climate crisis.

As a wildlife biologist, Big Sky Country podcast host Tiahni Adamson doesn't sugar-coat the state of the climate crisis. But she believes we can find answers through research – and is channelling this sense of practical hope into Big Sky Country, the podcast she hosts with Bush Heritage Australia.

"We have the skills and the wisdom," says Adamson, the 2024 Young Australian of the Year for South Australia. "We just need to listen to the right voices and inject energy, funds and understanding into these places to have a better future. When we give nature a chance, it flourishes and thrives."

The third season of Big Sky Country podcast takes an inclusive and evidence-based look at practical solutions to a warming world, from regenerative farming to cultural burning.

View the full article [here](#)

The Podcast title is Big Sky Country, by Bush Heritage and is available wherever you get your podcasts.

.....

REGENERATIVE AGRICULTURE

News from the Byron Farmers Network

Byron Shire Regenerative Agriculture Small Grant recipients announced

Byron Shire Council is pleased to announce the recipients of its 2025–26 Regenerative Agriculture

Small Grants Program, with three local graziers each receiving \$3,500 to deliver projects that improve

land health, productivity, and biodiversity.

The grant winners include:

- Felix Vergara (Myocum) – Adaptive total grazing project
- Sean Houlahan (Booyong) – Holistic grazing and livestock integration project
- Barry Morrison (Georges Farm, Skinners Shoot) – Adaptive grazing project

Over the next 12 months, these landholders will implement regenerative grazing practices designed

to enhance soil quality, protect riparian zones, and build climate resilience. We look forward to more

ideas and new initiatives from all our Byron Shire farmers when applications for the next Regenerative Agriculture Small Grant Program opens in August 2026. Case studies of last years projects can be viewed on Byron Shire's Regenerative Agriculture page:

[Regenerative Agriculture Small Grants Program - Byron Shire Council](#)

Grounded Festival 2026 heads to the Otway Ranges in Victoria April 22-23

GROUNDED is for farmers, growers, soil lovers, food systems thinkers, nutritionists, school garden enthusiasts and their friends. How to grow food better is important for ecosystems, food systems, health systems, financial systems and communities. Agroforestry is set to be a major focus at Grounded 2026 with this area of the Otway Ranges home to one of the most successful and largest farmer-led Landcare groups in Australia. The Otway Agroforestry Network has been working alongside local farmers for over 30 years, showing how trees can boost productivity, restore landscapes and build resilience on farms. There are bound to be opportunities for additional farm tours of establish agroforestry farms, including Rowan Reid's Bamba Agroforestry classroom.

When: 22nd – 23rd April 2026

Where: Yan Yan Gurt West Farm, in the eastern foothills of the Otway Ranges in Southern Victoria.

More Info: [Home - GROUNDED Festival](#)

.....

Byron Shire Council News

Indian Myna Control Program



The Common Indian myna is an introduced bird pest that decreases native bird populations.

Myna's compete with native wildlife for nesting hollows. They evict and kill:

- young kookaburras
- rosellas
- dollar birds
- small mammals like sugar gliders and ringtail possums.

We have an Indian Myna Trap Loan Program for residents.

Contact our Biodiversity Officer for more information on [02 6626 7000](tel:0266267000).

What else can residents do?

- report Indian Mynas on [FeralScan](#)
- prevent access to food waste, compost, uneaten pet food
- feed pets inside
- remove bird feeders
- create a native bird-friendly garden by planting [native plants](#), removing [weeds](#) and providing a bird bath
- turn outside lights off at night to prevent attracting insects
- repair eaves and gaps in your roof to prevent nesting.

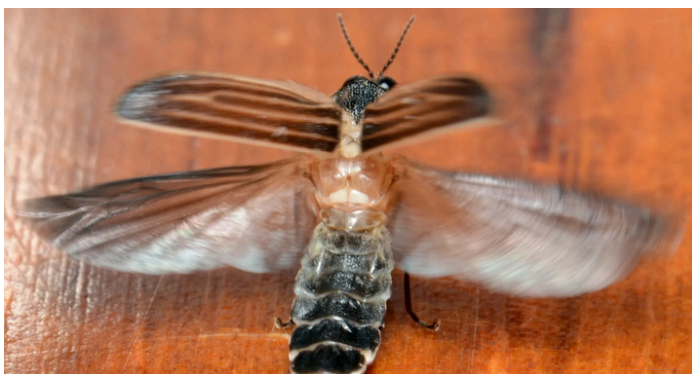
There is also a Byron Shire Indian Myna Action Group on Facebook:

<https://www.facebook.com/groups/1174316790159857/>

.....

CRITTER CORNER

2025's featured critters hope you have enjoyed learning about them - see you in 2026 for more critter action



.....

PLANT PROFILE

Fontainea oraria Coastal Fontainea

(Critically Endangered ssp)

Thanks John Tann for your fascinating presentation at the AGM - this month is for you JT!



Images credit M. Fagg

Fontainea oraria is a rare rainforest plant growing near the sea on private property near Lennox Head. A survey in 2005 found there are only ten mature plants, and 45 seedlings or juveniles. *Fontainea oraria* is listed as critically Endangered by extinction.

Description

Coastal Fontainea is a large shrub or small tree growing 8 - 10 m tall, sometimes with separate stems from the base. Its elliptical leaves are 8 – 12 cm long and are dark green, smooth and shiny above and paler and slightly glossy below. The leaf-stalk exudes a watery sap when broken. The flowers are small and white. Female flowers are borne in groups of two or three while the male flowers are borne in small clusters. The rounded fruit is ribbed, red, fleshy and slightly downy, and measures 2 – 2.4 cm in diameter.

Distribution

Coastal Fontainea is extremely rare, restricted to a small number of trees at Lennox Head in north-east NSW.

Habitat and ecology

- Coastal Fontainea occurs in remnant regrowth littoral rainforest on highly fertile red-brown krasnozems derived from the basalt. These remnants occur on stony slopes within 1km of the sea and at about 50 m above sea level.
- Flowering of the Coastal Fontainea occurs from spring to mid-summer although flowers have been observed during other seasons.
- The Coastal Fontainea appears to have variable periods of fruiting, with ripe fruit being observed mainly in autumn.
- The Coastal Fontainea is considered to be an obligate seed regenerator, which means it relies on seed production and seedling establishment for continued persistence.

Information sourced from:
[Atlas of Living Australia](#) & [NSW Bionet](#)

.....

SNIPPETS

Rights for Stingless Bees

Article published by Bee:Wild

Bee:wild, in partnership with Avaaz and NatGeo Explorer Rosa Vásquez Espinoza, is calling on the Peruvian government to recognize the Rights of Nature for stingless bees — granting them legal protection for the first time in history.

Before honeybees ever buzzed across the planet, stingless bees were already tending the world's first flowers. Their lineage stretches back 80 million years — a living thread connecting us to the age of dinosaurs.

Full story here: <https://www.beewild.org/rights-for-stingless-bees>

Mullumbimby beekeeper launches Bee Game

Article by Ella Sena published in Echonet 3 December, 2025

After eight years of designing, local parent and beekeeper Yari McGauley has just launched his nature-inspired board game, Forage, The Bee Game on Kickstarter.com.

Local families may be familiar with Yari due to his work at Main Arm Primary, where he taught students about how hives work, how honey is harvested, and why bees are so vital for our natural ecosystem. This passion for bees and for teaching is clearly instrumental in the creation of Forage, which mirrors the natural processes of bees. The gameplay is based entirely on these processes, from the interactions between bees and other flora and fauna, to the effect of aspects such as the seasons.

Full story here: <https://www.echo.net.au/2025/12/mullumbimby-beekeeper-launches-bee-game/>

How the myth of ‘aqua nullius’ still guides Australia’s approach to groundwater

Article published in The Conversation 17 December 2025

Indigenous people have coexisted with Australia's vast and ancient groundwater systems for thousands of generations. Their knowledge extends back through deep time, before our current climate and waterways. It offers insights that Western science is only beginning to quantify.

Full story here: <https://theconversation.com/how-the-myth-of-aqua-nullius-still-guides-australias-approach-to-groundwater-270374>

Common household rat poisons found to pose unacceptable risk to wildlife as animal advocates push for ban

Article by Lisa Cox published in The Guardian 17 December, 2025

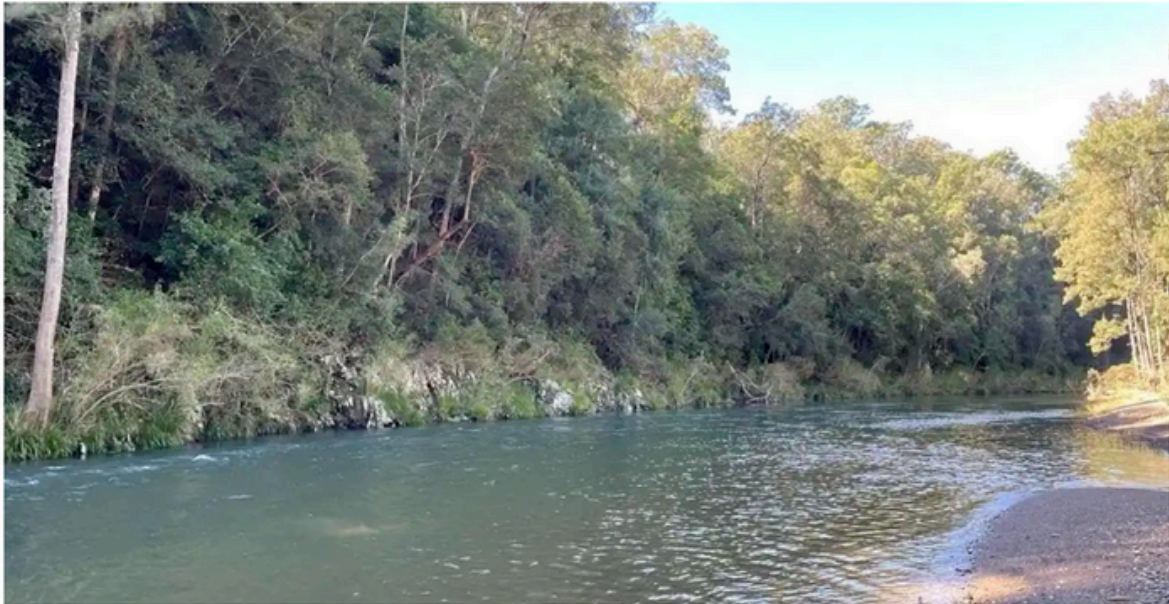
Commonly available rat poisons pose unacceptable risks to native wildlife, according to a government review that has stopped short of recommending a blanket ban on the products, to the consternation of animal advocates.

The long-awaited review of first- and second-generation anticoagulant rodenticides – FGARs and SGARs – has recommended the cancellation of some products, but a large array of waxes, pellets and blocks could continue to be sold to consumers subject to stricter labelling and conditions of use.

Full story here: <https://www.theguardian.com/environment/2025/dec/17/common-household-rat-poisons-found-to-pose-unacceptable-risk-to-wildlife-as-animal-advocates-push-for-ban>

EVENT

Local Land Services



Byron event for new landholders

Welcome, neighbour!

New to owning land in the Byron region? Local Land Services and Byron Shire Council are here to help you.

Looking after your land is important - good biosecurity and land management practices protect you, your property, and your neighbours.

Join us at Coorabell Hall this February for a free BBQ featuring local produce and listen to stories of sustainable farmers in your area.

It's a great chance to meet your neighbours, connect with local rural services, and learn more about caring for your land.

Come along and be part of your local community!

Date and time

Thursday 19 February 2026
5.30 pm – 7:00 pm

Location

Coorabell Hall
565 Coolamon Scenic Drive, Coorabell

Register

[Register online](#) or scan the
QR code



Contact

Navanka Fletcher
Engagement Coordinator
Navanka.fletcher@lls.nsw.gov.au
0409 319 417



<https://events.humanitix.com/welcome-neighbour-byron-event-for-new-landholders-2025>

.....

WEED OF THE MONTH

Continuing our revisitation of the Top-6 Post Flood weed Fact Sheet series produced in 2024, this month it's....

MADEIRA VINE

Anredera cordifolia



Description

Twining invasive climbing vine with stems to about 20 m long, producing tubers on roots and aerial tubers on stems. Leaves are fleshy, bright green and heart-shaped. Small fragrant white flowers are arranged in drooping "lamb's tails".

Invasion and establishment of exotic vines and scramblers has been identified as a key threatening process for many vulnerable and endangered species in NSW. Madeira vine is one of the main species listed as a threat.

Flowering time

Late summer to early autumn

How is it spread

Sprouting of aerial tubers, tubers produced on roots and from stem sections in contact with moist ground. Spread by water, soil movement, birds, rats, dumped garden refuse. In Australia it rarely produces seeds.

Impacts

Smothers and weighs down trees including the canopy of tall trees.

Habitat

Creek banks and disturbed sites. Tolerant of dense shade.

Origin

South America

Control Methods

Established infestations of Madeira Vine require a long term integrated approach involving hand based control methods, spraying and regular follow-up.

PHYSICAL REMOVAL

Tuberlings and tubers can be carefully dug up and bagged to dispose of all parts of the plant as they will regrow if in contact with the soil or they are exposed to sunlight.

If there is stress on the host plants, cut and pull the madeira vines from the canopy. When pulling the vines aerial tubers easily fall off the stems. Lay tarps or cloths on the ground to collect the aerial tubers to prevent the infestation from spreading. Cut vines can survive in the tree canopy and continue to drop tubers for up to two years. It is important to remove as much plant material as possible.

updated June 2024

Continued over....

WEED OF THE MONTH



MADEIRA VINE

Control Methods cont...

CHEMICAL CONTROL

Spot spraying is suitable for seedlings and for stems along the ground or over structures. Apply herbicide to all foliage to the point of visible wetness. If plants do not have tubers and are climbing on desirable plants, pull them off gently and spray them on the ground. Foliar spraying may be used after the stems have been treated using scrape and paint techniques. It can also be used as an initial treatment, followed by scrape and paint of remaining living stems. Follow up by spraying sprouting tubers when 2 to 8 leaves.

Splatter gun can be used for dense infestations of madeira vine that are difficult to reach. The specialised nozzle produces large droplets. This allows plants up to 10 m away to be sprayed with limited chance of spray drift. Spray small amounts of concentrated herbicide on the weed, taking care not to spray the leaves of native plants. Not necessary to cover all of the foliage.

Stem scraping is suitable for vines of any size and for those with aerial tubers. It is the safest management option in sensitive environments. It is labour intensive, as every vine stem has to be treated individually. Scrape sections of the vine down to the white fibrous layer and paint the exposed area with concentrated herbicide within 15 seconds. Repeat the process as high up the stem as possible. If possible, scrape both sides of the stem. Do not ringbark the stem as this will prevent the herbicide spreading through the plant. Remove and collect tubers along the stem near where they are to be scraped as they can easily fall off when the vines are being treated.

Best Season

Best results for spraying in warmer time of year.

Cut stump method for young vines without aerial tubers. Tubers may continue to sprout for several years. Cut stems and apply herbicide to both sides within 15 seconds.

Biological control

The leaf-feeding beetle *Plectonycha correntina* has been released in NSW and Queensland. The beetle has established and caused significant damage to madeira vine at many of the release sites. Both the adult beetles and the larvae feed on the leaves. Leaf-feeding reduces the plant's ability to photosynthesise and depletes the energy stores in the tubers. Only use the beetles in flood-free and frost-free areas.

Herbicide

To view permits or product labels go to the Australian Pesticides and Veterinary Medicines Authority website www.apvma.gov.au. PERMIT 9907 Expires 31/03/2025.

Biosecurity Duty

All pest plants are regulated with a **general biosecurity duty** to prevent, eliminate or minimise any biosecurity risk they may pose. Any person who deals with any plant, who knows (or ought to know) of any biosecurity risk, has a duty to ensure the risk is prevented, eliminated or minimised, so far as is reasonably practicable.

Prohibition on certain dealings

Must not be imported into the state, sold, bartered, exchanged or offered for sale. The content provided here is for information purposes only and is taken from the Biosecurity Act 2015 and its subordinate legislation, and the Regional Strategic Weed Management Plans.

More information

<https://weeds.dpi.nsw.gov.au/Weeds/MadeiraVine>

updated June 2024



This opportunity is supported by Byron Shire Council and jointly funded by the Australian and NSW Governments under the Disaster Recovery Funding arrangements.

You can revisit the Post Flood Fact Sheet series on BVL's website Resources page:
<https://brunswickvalleylandcare.org.au/resources/kits-guides/weeds/>

.....

Landcare working bees

For all Landcare Working Bees please wear protective clothing - long pants, long-sleeved shirt, closed-in shoes, hat, gloves & bring water, sunscreen, & insect repellent.

Please always contact the group coordinators before attending a working bee as plans do change!

JOIN US



Bangalow Land and Rivercare, Bangalow

WHEN: every Saturday 8:30am

CONTACT: Noelene Plummer bangalowlandcare@gmail.com 0431 200 638

Green and Clean Awareness Team, Main Beach Byron Bay

WHEN: 3rd Sunday of the month 9:00am

CONTACT: Peter Farmakis peter.farmakis@gmail.com 0488 715 565

Friends of Lilli Pilli, Byron Bay

WHEN: 1st Saturday of the month 3.30 pm

CONTACT: Deb Jorgensen deborah.jorgensen60@gmail.com

Maslem Arboretum, Heritage Park Landcare, Mullumbimby

WHEN: Saturdays 9:00am – 11:00 am

CONTACT: Diana Hughes bromspot@gmail.com

Mullum Town Landcare, Mullumbimby

WHEN: last Sunday morning of the month

CONTACT: John Tann johntann99@gmail.com

Ocean Shores Landcare, Yallakool Reserve and Devines Hill Ocean Shores

WHEN: each Friday at 8.30 – 11.00 am (8.00am DST)

CONTACT: David Kemp dnkemp77@gmail.com 0427 650 861

Suffolk Park Dunecare

WHEN: Fourth Sunday of the month 8:30am – 10:30am

CONTACT: Rebekah O'Flaherty rebekahoflaherty@gmail.com

Tyagarah Landcare, Grays Lane Tyagarah

WHEN: Each Thursday 9:00am – 11:00am

CONTACT: Bela Allen bela.allen@yahoo.com 6684 7113

Waterlilly Park Care Group, Waterlilly Park Ocean Shores

WHEN: Each Wednesday 8:00 am - 10.00 am

CONTACT: Ian Barker barker5057@gmail.com 0403 001 946

SPECIAL INTEREST GROUP

Byron Bird Buddies

WHEN: monthly program of surveys and walks
for more info visit www.byronbirdbuddies.com.au

CONTACT: byronbirdbuddy@gmail.com 0428 864 378

CAN'T FIND A GROUP NEAR YOU?

We have many other groups who meet on an ad hoc basis (contact us for more details) or if there isn't an existing group in your neighbourhood or you are interested in looking after a particular area, BVL can help you to form a locality group under the BVL umbrella.

LINKS

- Arakwal <http://arakwal.com.au/>
- Australian Association of Bush Regenerators <http://aabr.org.au>
- Border Rangers Alliance http://www.greasternranges.org.au/border_ranges/overview/overview
- Bangalow Koalas <http://www.bangalowkoalas.com.au/>
- Bangalow River and Landcare <http://www.bangalowlandcare.org.au/>
- Big Scrub Landcare <https://www.bigscrubrainforest.org.au/>
- Brunswick Valley Landcare <http://www.brunswickvalleylandcare.org.au/>
- Byron Bird Buddies <http://www.byronbirdbuddies.com.au/>
- Byron Community College <http://www.byroncollege.org.au/>
- Byron Shire Council <http://www.byron.nsw.gov.au/>
- EnviTE www.envite.org.au
- Environmental Trust <http://www.environment.nsw.gov.au/grants/envtrust.htm>
- Friends of the Koala www.friendsofthekoala.org
- Federal Landcare Inc federalandcare@gmail.com
- Local Land Services www.northcoast.lls.nsw.gov.au
- North Coast Local Land Services <http://northcoast.lls.nsw.gov.au/>
- Border Ranges Richmond Valley Landcare www.brrvln.org.au
- Mullumbimby Community Gardens <http://mullumcommunitygarden.wordpress.com/>
- North Coast Nature <http://www.northcoastnature.org.au/>
- Richmond Landcare Inc. <http://www.richmondlandcare.org/>
- Rous County Council (formerly Far North Coast Weeds) <http://rous.nsw.gov.au/>
- Soilcare http://www.soilcare.org_
- Tweed Landcare Inc. <http://www.tweedlandcare.org.au/>
- Wilson's Creek Huonbrook Landcare <http://www.wilsonscreeklandcare.mullum.com.au/>

For information about Landcare or other natural resource issues in Byron shire please contact



Landcare Coordinator, Valley Lipcer

www.brunswickvalleylandcare.org.au



0421 244 640



info@brunswickvalleylandcare.org.au

