



Newsletter

Conserving and restoring from forest to foreshore



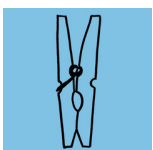
In this edition we celebrate our 15th Annual Mother's Day Community Tree Planting, share an exciting update from the BVL Native Pollinators at The Paddock Project, and mark World Bee Day on 20 May. You'll also find details on a new BVL subsidised Bushland Management Course, a Bird Buddies event, the Great Glossy Count, a Local Land Services Farming Forum, NSW Landcare Award nominations, a Wondertrail for kids at Heritage Park and Maslen Arboretum. Plus grants, weed and plant profiles and more.

We trust something here inspires you to get outside and be part of this wonderful community caring for the land.

From the BVL team

.....

BRUNSWICK VALLEY LANDCARE IS A REGISTERED CHARITY ON PEGS AND GRILL'D



Local Pegs app allows businesses to offer discounted prices to locals. You can opt to keep the discount, tip the business, or donate to a local charity



Grill'd Local Matters have chosen Brunswick Valley Landcare to be one of the three local community groups for this month. So if you grab a burger at Grill'd Byron Bay we'd love it if you chose us.



.....

This initiative is made possible by the NSW Landcare Program. A collaboration of Local Land Services and Landcare NSW supported by the NSW Government.

BVL NEWS

15th ANNUAL MOTHERS DAY TREE PLANTING

Brunswick Valley Landcare's celebrated and much-loved annual Mother's Day tree planting returns on Sunday 10 May.

6 Durrumbul rd. Main Arm 9am -12pm

BVL are excited to invite you to the 15th Annual Mother's Day Community Tree Planting, a day that has become one of the most cherished events on our calendar. Come and join us in Main Arm to celebrate our mums, honour Mother Earth, and plant trees together on Bundjalung Country.

Expect some awesome live music from Smokey Fields, President Pete's famous BBQ (vegetarian, GF and vegan options available), homemade cakes, tea and coffee and abundant community spirit while you get your hands in the soil and learn about our unique local ecosystems.

This year's site will take place on a beautiful MO in Main Arm, where we'll be creating a wildlife corridor and restoring Lower Richmond Hills Dry-Subtropical Rainforest, a rare and precious vegetation community. The landholders have been caring for and regenerating this land since 1985.

Ros, who initiated the BVL's Mother's Day planting on her MO, has been restoring the property and working in conservation in the area since the 80's. She is a local legend and a driving force in this valley's conservation story. In the early 1990s she helped form the Durrumbul Landcare Group, door-knocking up and down the Main Arm River to bring neighbours together around creek restoration and revegetation. She went on to mentor multiple Landcare groups, chair the Brunswick Catchment Management Committee, and serve as BVL Coordinator from the organisation's formation in 1997 until 2003.



Ros Elliott's picture of the property from 1979

In late 1980's early 1990's the idea of Landcare came to the valley. I personally thought it a wonderful philosophy for community to work together on environmental restoration projects, learn about the environmental issues and vegetation of the valley, as well as new settlers to the valley to meet each other. I decided to focus on the riverine environment wellbeing. We had working bees to plant riverine species. More community members heard what Durrumbul Landcare were doing and quickly asked to form other locality groups. I loved Landcare/Catchment Management in the 1990's because the passion for environmental repair was truly from the ground up.' Ros Elliott

BVL Mothers day plantings are the continuation of the community grassroots action that started in the 80's and we can't wait to see you there !

Continued over.....

BVL NEWS

15th ANNUAL MOTHERS DAY TREE PLANTING

Getting there and what to bring

Follow directions on the day to designated parking areas.

Dress for the weather, sun or showers, you never know at this time of year.

Bring a hat, sunscreen, gloves, a raincoat, sturdy boots, a water bottle and your keep cup

[Head to BVL's Facebook event page to RSVP and help us with catering numbers.](https://www.facebook.com/share/18bRDx7Ssz/)

<https://www.facebook.com/share/18bRDx7Ssz/>



THANK YOU !

BVL gratefully acknowledges the generous support of Little Valley Distribution, Mullumbimby Chamber of Commerce, the Australian Government Department of Social Services Volunteer Grants program, The Echo, Bay FM, Woolworths, and all our wonderful community donors.

BVL NEWS

BRUNSWICK VALLEY LANDCARE'S NATIVE POLLINATORS AT THE Paddock PROJECT



3. L-R The Paddock Project's Rodrigo & Karen with Dave from Wildbnb

Many Australian fruit, nut and seed crops benefit from insects pollinating their flowers. Of these insect pollinators, the introduced European honey bees (*Apis mellifera*) are among the most well-known and widely utilised, yet Australia is home to over 1600 species of native bees. Becoming familiar with native bees and other insects that pollinate crops will help to us to provide habitats and resources that support these species into the future.

Native bees that visit and pollinate crops require local nesting opportunities and food. Their nesting habits are diverse. For example, several bee species dig burrows in the ground and need access to open soil, others use narrow crevices, dead hollow canes or beetle bores in dead wood, or they dig their own nest in plant stems or dead branches.

Pollen and nectar from flowers are the main food sources for bees, so they benefit from access to a diverse range of flowering plants. The vast majority of Australian native bees that visit crops are wild bees. Only a very small number are currently managed for crop pollination. In northern parts of Australia, the native stingless bees (*Tetragonula* and *Austroplebia*) are managed and utilised for crop pollination. Hives of these bees can be purchased or hired

In addition to native bees and honey bees, crops are visited and pollinated by a vast range of other insects including flies, butterflies, moths and beetles. These other species may visit crop flowers more frequently than bees. For example, flies are the most abundant flower visitors in avocado crops in the Sunraysia region (VIC, NSW & SA) and mango crops in the Mareeba region (QLD). Very little is known about just how important these other insects are to crop pollination, but given their abundance in some regions, more research is required to understand this and the habitats and resources needed to support them. In Australia, a wide range of native insects provide pollination services to crops.

.....
Continued over.....
.....

BVL NEWS

Source: "A guide to Australian crop pollinating insects" AgriFutures: Securing Pollination and Australian Government Department of Agriculture, Water and the Environment

Authors: Romina Rader, Bryony Willcox, Katja Hogendoorn, Saul Cunningham, Tanya Latty, Scott Groom and Jeremy Jones

In light of the impacts of Varroa mite, Varroa destructor, on European honeybee populations in Australia, it's never been more important to pay attention to our many native pollinator species. That's why Brunswick Valley Landcare (BVL) is launching Native Pollinators at The Paddock Project, Mullumbimby with generous support from local company Flow Hive and our community donors.

Stage 1 has just been completed last week with installation of native pollinator habitats by Wildbnb Wildlife Habitat. The timing was perfect – we had opportunity to present to The Paddock Project's market garden crew what was just installed and why. Karen, Rodrigo and the team are over the moon to be the first host site.

Stage 2 is coming soon - an invitation to citizen scientists of all ages to become part of a bioblitz to better understand the diversity of native pollinator species providing vital ecosystem services in the production of our local food. Solitary native bees, colony native bees, flies, beetles, moths, butterflies, wasps, hoverflies – we're on a mission to identify and document as many species as we can whilst learning how to better support healthy pollinator habitat. Microbats are in focus too, as important bioindicators of ecosystem health. Microbats play an important role in controlling a range of pest insect species and disease carrying mosquitoes, by eating around 40% of their body weight of insects each night. Did you know that there are 27 species of Microbat occurring within our area? Yet very little data is available on their current presence and distribution. We can help! We'll have you covered with a heap of resources to support your participation in this Native Pollinator journey of discovery.

Byron Bird Buddies are part of the action too, conducting "Native Birds as Pollinators" surveys at The Paddock Project. The Buddies are presenting their survey results to community on Wednesday 29th April at 3pm – get on down to the Paddock Project if you can.

And keep your eyes on this space for details of more interactive workshops at The Paddock Project Mullumbimby, starting late May.



1. The Paddock Project's Karen Gross, 2. Hunk of Holes habitat for solitary pollinator insects, 3. Microbat Hunk, 4. Harry Hackett project officer

EVENTS AND OPPORTUNITIES

BVL SUBSIDISED 2 DAY BUSHLAND MANAGEMENT COURSE AT TAFE NSW



Feel like brushing up on your bush regeneration skills and Plant ID, meeting new people with a passion for restoration, getting some hands on experience in maintaining natural bushland areas or taste testing a TAFE course in Conservation and Ecosystem Management ?

BVL are offering 3 subsidised places to members for a 2 day TAFE NSW Statement in Bushland Management course running May 5th and 12th and at Wollongbar campus 61 Sneaths Rd Wollongbar NSW

Course outcomes include:

- Understand ecological principles and biodiversity in bushland ecosystems
- Apply conservation strategies for preserving native flora and fauna
- Use techniques for controlling invasive species and managing pest populations
- Use erosion controls skills and habitat restoration
- Rehabilitate degraded land and understand its cultural significance to Indigenous communities
- Understand work health and safety (WHS) in bushland regeneration

Units taught in this course –

800001303B – Maintaining Native Ecosystem Areas

800001303A – Identify Plants in Native Bush Areas

Course fee is normally \$380.00; but with the BVL subsidy the cost to you will be \$95.

To register your interest please contact valley@brunswickvalleylandcare by April 30th. Places will be given to the first 3 people to respond and pay a \$95 deposit.



EVENTS AND OPPORTUNITIES

Local Land Services

North Coast Farming Forum: climate adaptive agriculture

Practical ideas. Real conversations. Stronger farms.

The North Coast Farming Forum brings producers, industry experts and Local Land Services specialists together to share what's working on the ground and what's coming next.

Program highlights

- Field trips across Banyula Farm, with on-ground examples of landscape repair & rehydration projects, orchard management approaches, and koala friendly planting practices
- Targeted industry sessions localised, practical climate risk management actions for livestock & horticulture producers.
- Carbon & environmental markets—build your understanding across the forum with practical sessions: what is it, what will it mean for your farm, and is it worth participating?

Scan the QR code to see the full program.

When: Thursday 7 May - Friday 8 May 2026

Where: Banyula Farm, Clunes – exact address sent upon registration.

Cost: \$25 per person (includes catering).

Booking: Register online or scan the QR code.

Contact: Jess Steinborner, Event Coordinator at: jess.steinborner@lls.nsw.gov.au



MC Costa Georgiadis

Special guests



Dr Anika Molesworth



Richard Heath



Dr Susan Orgill



The North Coast Farming Forum is supported by the Australian Government through funding from the Natural Heritage Trust under the Climate-Smart Agriculture Program. The North Coast Farming Forum is also supported by the NSW Department of Climate Change, Energy, the Environment and Water through the Primary Industries Productivity and Abatement Program.



Australian Government

EVENTS AND OPPORTUNITIES

Byron Bird Buddies – Celebrating Migratory Bird Day

An annual event that celebrates the beauty and importance of migratory birds and highlights the need to protect them and their habitats. Migratory birds are a vital part of Australia's ecosystems, helping to control insects, pollinate plants, and maintain biodiversity. The event encourages students and communities to learn about migration, understand the challenges birds face along their journeys, and take action to protect them



Sunday 3rd May - 9am at Wild Spaces

No1 Centennial Circuit in the Byron Bay industrial estate. The big white building on the corner opposite Kennards Hire.

1. 9am - Introduction – Vicki Sloane
2. 9.15 - Migratory Shorebirds – Jack
3. 10.15 – Morning tea
4. 10.45 - Migratory Bush Birds - Ryan
5. 11.45 David Warth's 'Wild Byron' (Trailer) - David is a professional nature, documentary & wildlife filmmaker – featuring some great raptor footage.

Booking & Registration necessary – Numbers will be limited
Please Register with: byronbirdbuddy@gmail.com

Byron Bird Buddies c/- Brunswick Valley Landcare, PO Box 6 Brunswick Heads. NSW 2483 Email:
byronbirdbuddy@gmail.com [www:byronbirdbuddies.com.au](http://www.byronbirdbuddies.com.au)

EVENTS AND OPPORTUNITIES

THE GREAT GLOSSY COUNT 16 - 17 MAY, 2026



Image credit: Jasmine Connors

Glossy Black-Cockatoos need you!

Join in a nationwide wildlife effort this May when the Great Glossy Count returns as a citizen science event focussed on collecting data to help us protect the South-eastern Glossy Black-Cockatoo — one of Australia's most distinctive and threatened bird species. Glossy Black-Cockatoos are listed as Vulnerable under Australian conservation law and continue to face serious threats from habitat loss. Glossies depend almost entirely on the seeds of native she-oak trees for food, so understanding where they live and feed is essential for conservation action.

Volunteer citizen scientists receive training and resources to support participation and the event takes place across parts of Queensland, NSW, Victoria and ACT.

Register now: <https://bit.ly/greatglossycount>

EVENTS AND OPPORTUNITIES

MAY TREE PLANTING FOR KOALAS



BANGALOW KOALAS

Koala Tree Planting

Sat 2nd May 2026
Ocean Shores

Time 9.00am start
Trees 1000
RSVP Bookings are essential, email to book your place today at:
president@bangalowkoalas.com.au



BANGALOW KOALAS

Koala Tree Planting

Fri 15th May 2026
South Gundurimba

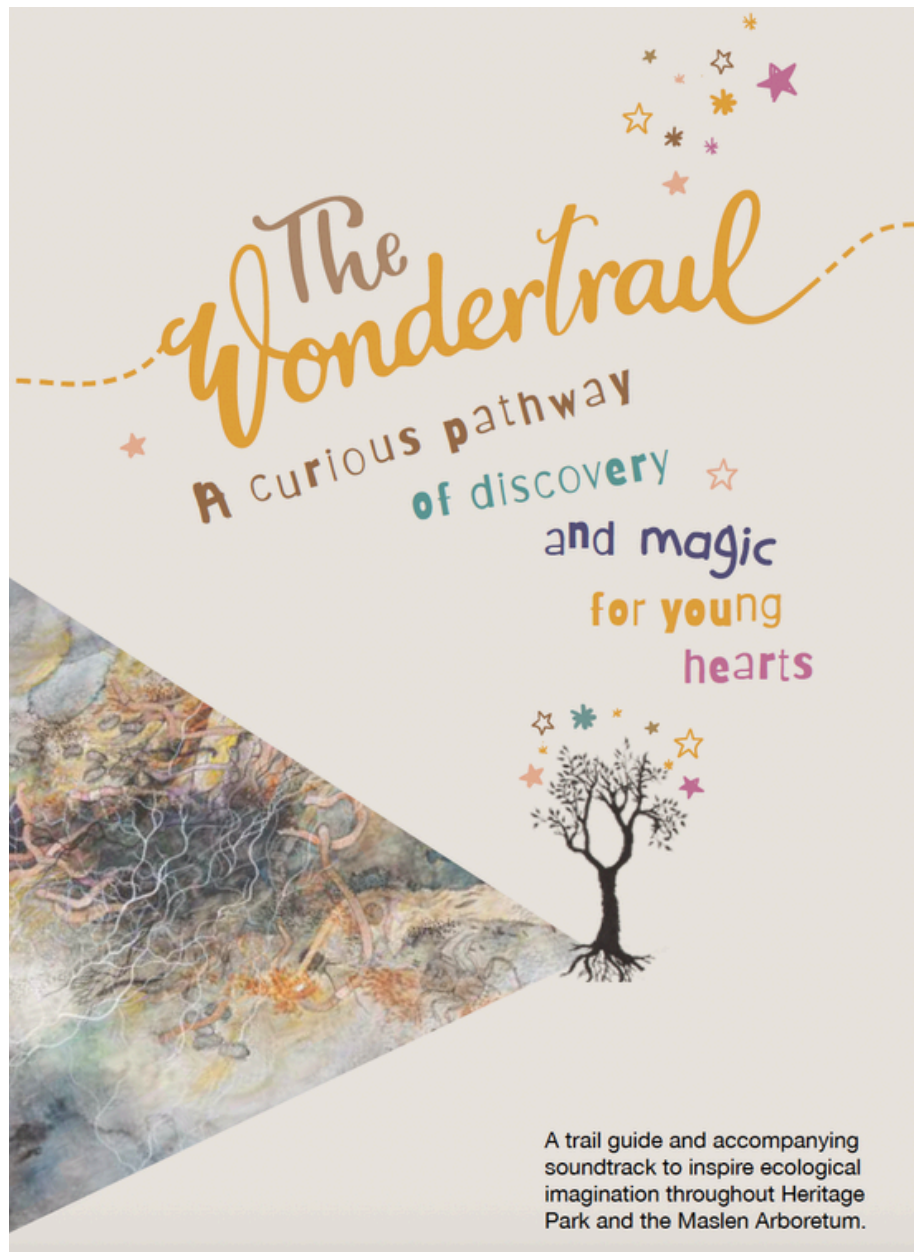
Time 10.00am start
Trees 1500
RSVP Bookings are essential, email to book your place today at:
president@bangalowkoalas.com.au



EVENTS AND OPPORTUNITIES

FOR KIDS AND THEIR BIG KID GROWN UPS

A NEW ECOLOGICAL TRAIL GUIDE FOR HERITAGE PARK AND MASLEN ARBORETUM,
MULLUMBIMBY
APRIL 18 - JUNE 1.



From April 18 to June 1st families can embark on an imaginative ecological art adventure through Heritage Park and Maslen Arboretum in Mullumbimby.

The Wonder Trail leads participants along the banks of the Brunswick River and through the parklands, encouraging children and their families to slow down, observe closely, and engage creatively with the natural world around them.

HOW TO JOIN THE ADVENTURE:

Pick up a free printed activity guide from the brochure box at the Mill Street/Playground entrance to Heritage Park Or download the guide here: <https://roundabout.net.au/wondertrails> (Printed copies are limited so don't miss out!).

When you come across a sign on the path download the soundscape with the QR code.

EVENTS AND OPPORTUNITIES

WORLD BEE DAY - WEDNESDAY 20 MAY

Wednesday 20 May is World Bee Day, and with Brunswick Valley Landcare's Pollinator Project launching soon, there's never been a better time to celebrate the tiny creatures doing the big work.



Every year on 20 May the world pauses to celebrate the remarkable creatures that keep our ecosystems and our food alive. The 2026 World Bee Day theme is Bee Together for People and the Planet. A partnership that sustains us all, celebrating the enduring relationship between humans and pollinators.

Five simple things you can do:

- Plant a native flowering plant
- Buy honey from a local beekeeper
- Leave a shallow dish of water out for bees on warm days
- Avoid spraying pesticides while plants are in flower
- Share the word — tell someone why bees matter

Get involved and find out more:

World Bee Day Australia — events, resources and the Global Waggle Dance Challenge:
www.worldbeeday.org.au

The When Bee Foundation — Australia's leading bee conservation charity:
www.whenbeefoundation.org.au

Download the 2026 World Bee Day Communications Pack for event ideas and resources:
www.worldbeeday.org.au/resources

GRANTS

There are several funding opportunities currently open that are relevant to landholders, community groups and conservation volunteers across the Brunswick Valley. Check below to see if something suits your project or property.

FOR COMMUNITY GROUPS & ORGANISATIONS

NSW ENVIRONMENTAL TRUST : Environmental Restoration & Rehabilitation Grants

Applications close 13 May 2026

One of NSW's most established environmental grant programs, offering \$150,000 to \$350,000 for community-led projects that conserve, restore and rehabilitate natural environments. Eligible activities include bush regeneration, weed management, revegetation, fencing, erosion control and threatened species habitat work.

Open to incorporated community organisations, not-for-profits, councils and government agencies. Unincorporated groups may be able to apply in partnership with an eligible organisation.

Find out more: environment.nsw.gov.au/funding-and-support/nsw-environmental-trust/grants-available/environmental-restoration-and-rehabilitation

NSW GOVERNMENT ACTIVE REGIONAL COMMUNITIES :Local Priorities Grants

Applications close 22 May 2026 at 4pm

Grants of \$10,000 to \$100,000 are available for incorporated not-for-profit community organisations across regional NSW. The program supports groups that contribute to the wellbeing and social participation of residents — and specifically includes community environmental care groups as an eligible project type.

Eligible local government areas include: Byron Shire, Ballina Shire, Kyogle, Lismore City, Richmond Valley, Tweed Shire and Clarence Valley.

Find out more: nsw.gov.au/grants-and-funding/local-priorities

FOR INDIVIDUAL LANDHOLDERS

NSW BIODIVERSITY CONSERVATION TRUST · Open on an ongoing basis

Conservation Partners Grants

If you have a conservation agreement on your property, you may be eligible for direct financial support to fund on-ground restoration works. Grants of up to \$15,000 per year for up to three years are available for practical activities including weed control, bush regeneration, revegetation, pest animal control and fencing. Smaller grants are available for term agreement and wildlife refuge agreement holders.

Land for Wildlife members: you are also eligible, but apply through the Community Environment Network (CEN) rather than directly through the BCT.

This is one of the few grant programs specifically designed for individual landholders — a valuable opportunity for the many dedicated land stewards across the Brunswick Valley doing work on their own properties.

Find out more: nsw.gov.au/grants-and-funding/conservation-partners-grants

EVENTS AND OPPORTUNITIES

STATE & TERRITORY LANDCARE AWARDS

Do you know someone who deserves recognition for their work caring for our land, water, animals and ecosystems? Now is the time to put their name forward.



The 2026 NSW Landcare Awards celebrate the individuals, groups and organisations making a real difference on the ground.

- Volunteers for landcare groups other environmental community groups
- Sustainable farmers, farming systems groups and primary producer groups
- Agricultural co-operatives, industry associations
- Traditional Owners, First Nations organisations and Indigenous land and sea Rangers
- Landcare groups, networks and other community-led environmental groups
- Landholders and/or land managers
- Urban landcare groups including 'Friends of' and bushcare groups
- Coastcare, Rivercare, Dunecare groups and individuals
- Environmental community care groups
- Natural resource management agencies
- Local government
- NGOs
- Research agencies and academics
- Junior Landcare (early learning centres, day care centres, primary and secondary schools, Scouts and Girls Guides)
- Young adult groups and individuals
- Persons who are deceased can be nominated posthumously

Nominations are free, open to self-nominations, and take just minutes to complete. If someone in your community is doing extraordinary work — quietly or otherwise — this is your chance to make sure they get the recognition they deserve.

Nominations close Friday 31 July 2026 at 11.59pm AEST.

Nominate now: <https://landcareaustralia.org.au/landcare-conference-and-landcare-awards/state-territory-landcare-awards-and-national-landcare-awards/>



PLANT PROFILE

Karamat (*Hygrophila angustifolia*)



Sourced from Inaturalist, photo credit Scott W. Gavins

COMMON NAME Willow Hygro · Narrowleaf Hygrophila · Gulf Swampweed

FAMILY Acanthaceae

ORIGIN Native — N & E Australia, New Guinea

HABITAT Waterways, creek banks, wetlands

HABIT Perennial aquatic herb to 45cm

About This Plant

Karamat (*Hygrophila angustifolia*) is a native Australian aquatic herb found naturally along creek banks, in shallow wetlands, and at the margins of slow-moving waterways across northern NSW, Queensland, the Northern Territory, and Western Australia. It is a modest, unassuming plant that punches well above its weight ecologically — filtering water, stabilising banks, providing habitat, and serving as a valuable host plant for native butterflies. The name *Hygrophila* comes from the Greek meaning “water-loving”, and *angustifolia* from the Latin for “narrow-leaved” — both apt descriptions of this slender, wetland-dwelling species.

QUICK ID GUIDE

HEIGHT 15–45cm

LEAVES Narrow, 2–8mm wide, lance-shaped

FLOWERS Small, pale blue or white, tubular

FLOWERING Late summer (March)

STEMS Erect, square, may root at nodes

FRUIT Capsule 10–18mm, larger than the weed *H. costata*

GROWTH Submerged or emergent

ROOTS Fibrous, anchoring in mud or grave

PLANT PROFILE

Karamat (*Hygrophila angustifolia*)

Ecological Value

This plant plays an important role in healthy creek and wetland ecosystems. Its dense narrow foliage and rooting stems help bind and stabilise creek banks, reducing erosion during flood events. As a fast-growing aquatic plant, it actively absorbs excess nutrients such as nitrogen and phosphorus from the water, helping to prevent algal blooms and maintain water quality. It provides shelter and breeding habitat for aquatic invertebrates and small fish, and its structure creates microhabitat in and around the water's edge.

Karamat is host for a number of butterflies including caterpillars of the Chocolate Argus, *Junonia hedonia*, Meadow Argus, *Junonia villida* and the Varied Eggfly, *Hypolimnas bolina*. The flowers are also pollinated by blue banded bees. It is also a native host plant for the Dainty Grass-blue butterfly (*Zizula hylax*), one of the smallest butterflies in Australia. This makes it a valuable direct replacement when removing the invasive weedy *Ruellias* (*Ruellia brevifolia* and *R. squarrosa*), which are also host plants for this butterfly but should be eradicated.

Growing & Planting

Karamat is well suited to riparian restoration planting along creek banks and wetland margins across northern NSW. It is hardy, fast-growing, and establishes readily in the right conditions.

- Position: Prefers wet to waterlogged soils, shallow water margins and creek banks
- Climate: Subtropical and warm temperate climates, 20–30°C optimal
- Soil: Rich, slightly acidic to neutral soils; tolerates mud, gravel and sand
- Light: Full sun to partial shade
- Propagation: By seed or stem cuttings; stems root readily at nodes when in contact with wet soil
- Planting: Plant in clumps along water's edge; space 30–40cm apart for good coverage

Sourced from Atlas of Living Australia, PlantNET, Australian Native Plants Society



Sourced from Inaturalist, photo credit Scott W. Gavins

WEED OF THE MONTH

Red Ruellia (*Ruellia brevifolia*)



Common Names: Tropical Wild Petunia, Red Christmas Pride. Also known as *Stephanophysum longifolium*.

Profile: Red Ruellia is a small, shrubby, shade-tolerant perennial growing to around 60cm tall. Leaves are green with a paler underside, ovate in shape, 4–13cm long and 2–4.5cm wide, with conspicuous white markings. The flowers are the giveaway — bright red tubular blooms, 2.7–3.2cm long, carried in loose branching clusters. It blooms repeatedly throughout the year, making it easy to spot and easy to mistake for a garden ornamental — which is exactly how it arrived here.

Why It's a Problem: Originally planted as a garden ornamental for shady spots, Red Ruellia has escaped into the bush and is now turning up in increasing numbers across the Brunswick Valley — forming dense thickets that smother native understorey plants. It spreads rapidly via both seed and root shoots, making it highly persistent once established. It is regarded as a “sleeper weed” in Queensland and New South Wales, meaning it establishes quietly before taking hold. By the time it's noticed, it can already be well entrenched. Its tolerance of deep shade makes it particularly problematic in rainforest and riparian environments where most weeds struggle to compete.



QUICK ID GUIDE

HEIGHT To 0.6m, shrubby, shade-tolerant

LEAVES Ovate, 4–13cm, opposite, white markings

FLOWERS Bright red, tubular, 2.7–3.2cm

FLOWERING Repeatedly year-round

STEM Square, becoming woody with age

SEEDS Capsule that explodes when ripe

SPREAD Seed AND root shoots

SHADE Tolerates deep shade

Images by Alison Ratcliffe - plants spotted in the Byron Shire

Continued over.....

and its relative... Creeping Ruellia (*Ruellia squarrosa*)



Photo: Robert Whyte

Creeping Ruellia (*Ruellia squarrosa*), a relative of Red Ruellia, has also been spotted along Upper Mullumbimby Creek and is emerging as an environmental weed of concern across the Northern Rivers region. Like its upright cousin, it began as a garden ornamental and has escaped into the bush, but where Red Ruellia grows up, Creeping Ruellia spreads outward — carpeting the ground via underground rhizomes and rooting at stem nodes as it goes. Its soft fuzzy leaves and mauve to bluish-pink tubular flowers make it easy to mistake for something harmless, and it thrives in both full sun and deep shade, making it just as adaptable and just as difficult to eradicate once established. Keep an eye out for a low-growing, soft-leaved plant with purple-pink flowers spreading along creek banks or forest floors. As with many weeds, it is a lot easier to remove it when you see it emerge, rather than wait until it has gotten away.



© *stevemcbride*

A Note on Wildlife

Both weedy Ruellias are host plants for the Dainty Grass-blue butterfly (*Zizula hylax*), one of the smallest butterflies in the region. If you spot a tiny blue-grey butterfly resting on Ruellia, consider delaying control in that spot. The native alternative host plant is Karamat (*Hygrophila angustifolia*), which we feature in this edition, and can be planted along watercourses as a replacement. Stony Creek Frogs have also been observed using Ruellia stands in some areas.

Helpful Resources

1. Land for Wildlife SEQ — Weedy Ruellias www.lfwseq.org.au/weedy-ruellias

The most detailed and practical control resource available for Australian conditions. It covers manual removal, herbicide use under off-label permit PER11463 (glyphosate 360g/L at 100ml per 10L water, aquatic-suitable product), mosaic removal approach, butterfly host plant considerations and follow-up control advice.

2. SOWN — Save Our Waterways Now (Brisbane) sown.com.au/stephanophysum-longifolium-acanthaceae

LISTEN AND WATCH

With all this Autumn planting going on we need to talk planting maintenance too !

Below is a link to very entertaining and informative video of Mark Dunphy, local legend, owner of Firewheel Rainforest Nursery and President of the Big Scrub Rainforest Conservancy, explaining why maintaining plantings really matters, and how to go about it.



Why Maintenance Matters: NBS Science in the Pub Presentation by Mark Dunphy



Richmond Landcare Inc
35 subscribers

Subscribe

👍 7



➦ Share

🔖 Save

⬇️ Download

This presentation was given at The Channon Tavern on Thursday 27th March 2025, as part of Richmond Landcare Inc's Nature Based Solutions Project: Building Flood Resilience in the Lismore Catchment. This project received funding from the Australian Government

<https://www.youtube.com/watch?v=c3BNcZsg8sk>



BYRON BIRD BUDDIES

Program update

Byron Bird Buddies have some great bird monitoring events and workshops on this month

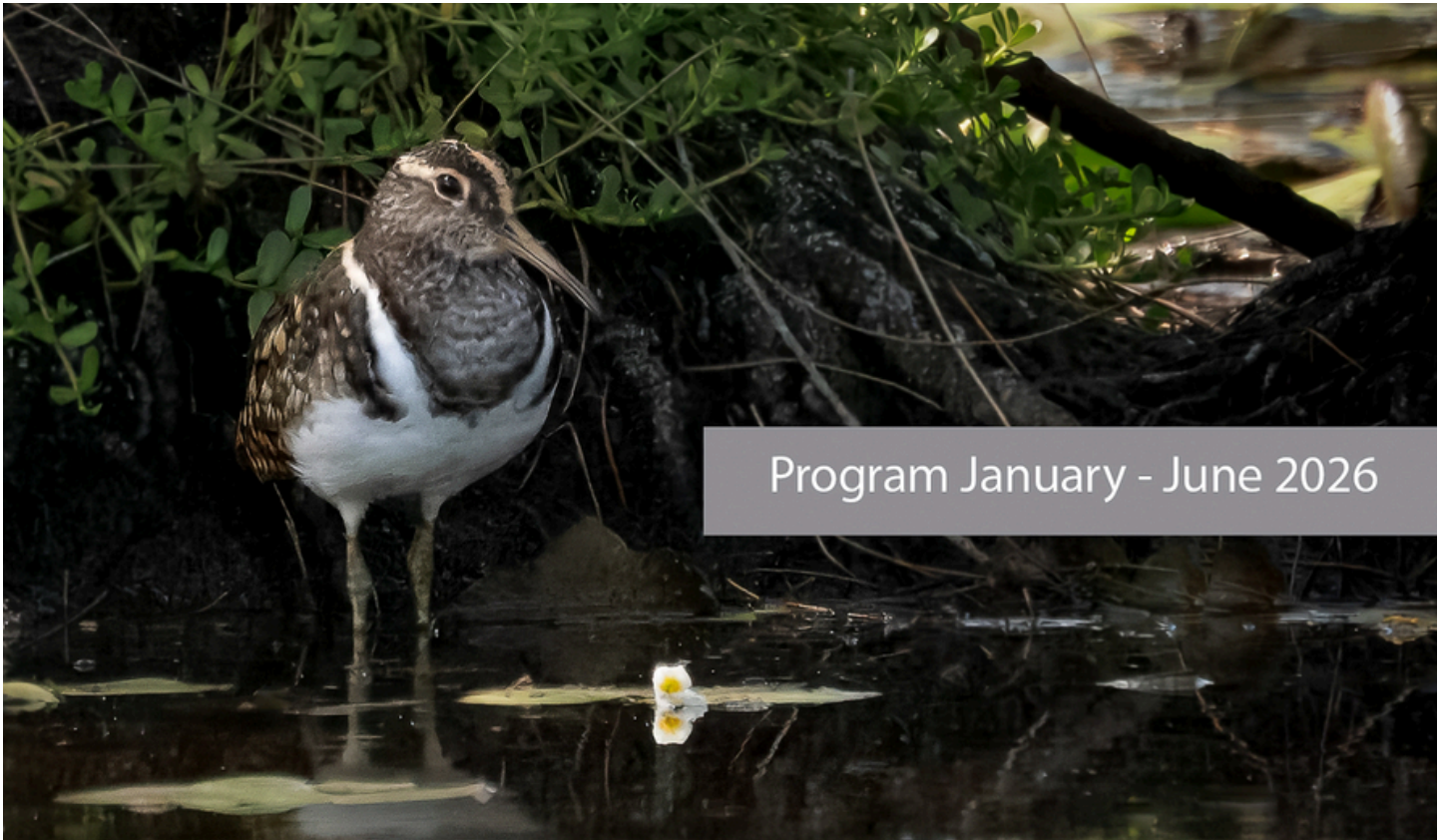


Image: Painted Snipe Painted Snipe by Hans Wohlmuth at Coombabah Lakelands Conservation Area.

Surveys and Outings: Newcomers are welcome whether experienced birders or beginners. Enjoy one of Australia's best bird regions and participate in citizen science conservation, monitoring and education.

Contact: Call Jan on 0428 864 378 or email byronbirdbuddy@gmail.com (Please note that the program may change at short notice due to local conditions or weather.)

What to bring: Wear sturdy shoes and bring water, hat, sunscreen, insect repellent and morning tea, lunch or a plate to presentation meetings.

Here is a link to their most recent program.

BBB MARCH - JUNE 2026 - Byron Bird Buddies



LANDCARE WORKING BEES

For all Landcare Working Bees please wear protective clothing - long pants, long-sleeved shirt, closed-in shoes, hat, gloves & bring water, sunscreen, & insect repellent.

Please always contact the group coordinators before attending a working bee as plans do change!

JOIN US



Bangalow Land and Rivercare, Bangalow

WHEN: every Saturday 8:30am

CONTACT: Noelene Plummer bangalowlandcare@gmail.com 0431 200 638

Green and Clean Awareness Team, Main Beach Byron Bay

WHEN: 3rd Sunday of the month 9:00am

CONTACT: Peter Farmakis peter.farmakis@gmail.com 0488 715 565

Friends of Lilli Pilli, Byron Bay

WHEN: 1st Saturday of the month 3.30 pm

CONTACT: Deb Jorgensen deborah.jorgensen60@gmail.com

Maslem Arboretum, Heritage Park Landcare, Mullumbimby

WHEN: Saturdays 9:00am – 11:00 am

CONTACT: Diana Hughes bromspot@gmail.com

Mullum Town Landcare, Mullumbimby

WHEN: last Sunday morning of the month

CONTACT: John Tann johntann99@gmail.com

Ocean Shores Landcare, Yallakool Reserve and Devines Hill Ocean Shores

WHEN: each Friday at 8.30 – 11.00 am (8.00am DST)

CONTACT: David Kemp dnkemp77@gmail.com 0427 650 861

Suffolk Park Dunecare

WHEN: Fourth Sunday of the month 8:30am – 10:30am

CONTACT: Rebekah O'Flaherty rebekahoflaherty@gmail.com

Tyagarah Landcare, Grays Lane Tyagarah

WHEN: Each Thursday 9:00am – 11:00am

CONTACT: Bela Allen bela.allen@yahoo.com 6684 7113

Waterlilly Park Care Group, Waterlilly Park Ocean Shores

WHEN: Each Wednesday 8:00 am - 10.00 am

CONTACT: Ian Barker barker5057@gmail.com 0403 001 946

Organic Landcare

WHEN: Fortnightly, every second Saturday.

CONTACT: Nadia de Souza Pietramale organiclandcareinc@gmail.com 0478272300

SPECIAL INTEREST GROUP

Byron Bird Buddies

WHEN: monthly program of surveys and walks

for more info visit www.byronbirdbuddies.com.au

CONTACT: byronbirdbuddy@gmail.com 0428 864 378

CAN'T FIND A GROUP NEAR YOU?

We have many other groups who meet on an ad hoc basis (contact us for more details) or if there isn't an existing group in your neighbourhood or you are interested in looking after a particular area, BVL can help you to form a locality group under the BVL umbrella.

LINKS

- Arakwal <http://arakwal.com.au/>
- Australian Association of Bush Regenerators <http://aabr.org.au>
- Border Rangers Alliance http://www.greateasterranges.org.au/border_ranges/overview/overview
- Bangalow Koalas <http://www.bangalowkoalas.com.au/>
- Bangalow River and Landcare <http://www.bangalowlandcare.org.au/>
- Big Scrub Landcare <https://www.bigscrubrainforest.org.au/>
- Brunswick Valley Landcare <http://www.brunswickvalleylandcare.org.au/>
- Byron Bird Buddies <http://www.byronbirdbuddies.com.au/>
- Byron Community College <http://www.byroncollege.org.au/>
- Byron Shire Council <http://www.byron.nsw.gov.au/>
- EnviTE www.envite.org.au
- Environmental Trust <http://www.environment.nsw.gov.au/grants/envtrust.htm>
- Friends of the Koala www.friendsofthekoala.org
- Federal Landcare Inc federalandcare@gmail.com
- Local Land Services www.northcoast.lls.nsw.gov.au
- North Coast Local Land Services <http://northcoast.lls.nsw.gov.au/>
- Border Ranges Richmond Valley Landcare www.brrvln.org.au
- Mullumbimby Community Gardens <http://mullumcommunitygarden.wordpress.com/>
- North Coast Nature <http://www.northcoastnature.org.au/>
- Richmond Landcare Inc. <http://www.richmondlandcare.org/>
- Rous County Council (formerly Far North Coast Weeds) <http://rous.nsw.gov.au/>
- Soilcare <http://www.soilcare.org>
- Tweed Landcare Inc. <http://www.tweedlandcare.org.au/>
- Wilson's Creek Huonbrook Landcare <https://wilsonscreekhuonbrooklandcare.org.au/>

For information about Landcare or other natural resource issues in Byron shire please contact



Landcare Coordinator, Valley Lipcer

www.brunswickvalleylandcare.org.au



0421 244 640



info@brunswickvalleylandcare.org.au

